

*Diverdimento. Ex D. Tur**Violino.**Flauto**Viola.**Basso.**Def. sig. Bach.*

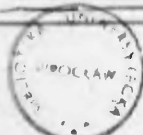
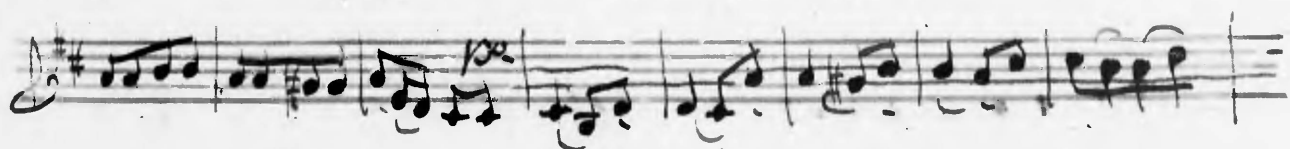
R 2596/23

St.-Sig Bohn 207, 1

L'arco. = 3596/22

Violine

St.-Sig Bohn 207



60447 Mus.

Odde. Mus

4. 1259 Mus

Handwritten musical score consisting of ten staves. The music is written in G major (one sharp) and appears to be in a common time signature. The notation includes various rhythmic values, slurs, and dynamic markings such as *for.*, *pp.*, and *f.*. The piece concludes with a double bar line and a fermata on the final note of the tenth staff.

Volti si segue Rondeau

Three empty musical staves at the bottom of the page, indicating the start of a new section.

A handwritten musical score consisting of ten staves of music. The key signature is G major (one sharp) and the time signature is 4/4. The notation includes various rhythmic values, slurs, and dynamic markings such as *pp*, *sfz*, *ppp*, and *sfz*. The music is written in a cursive, historical style.

A Fine

Three empty musical staves at the bottom of the page, consisting of five-line staves with a treble clef and a key signature of one sharp.