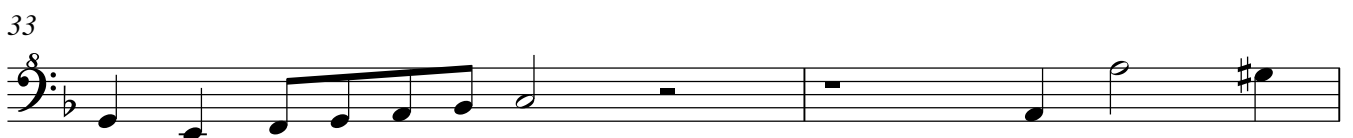
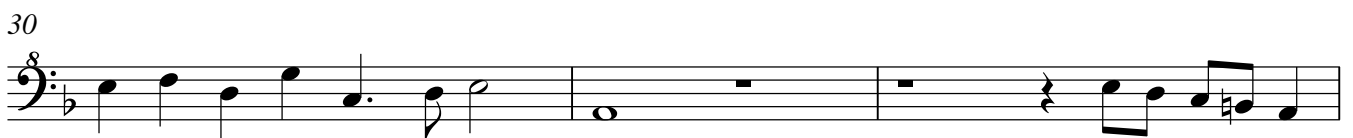
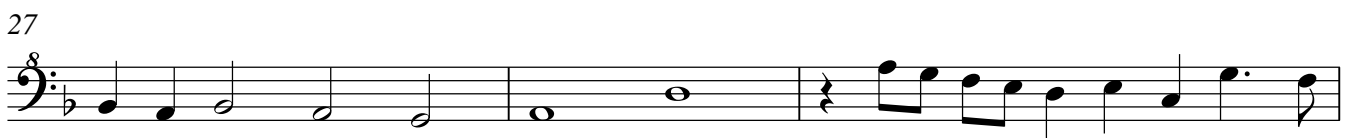
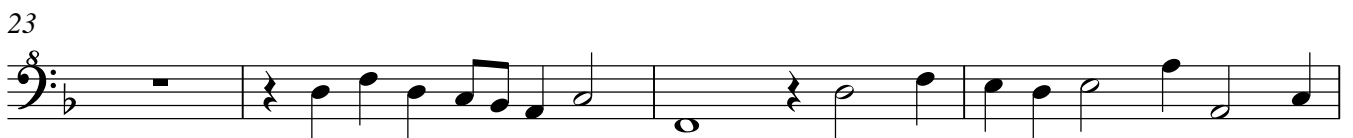
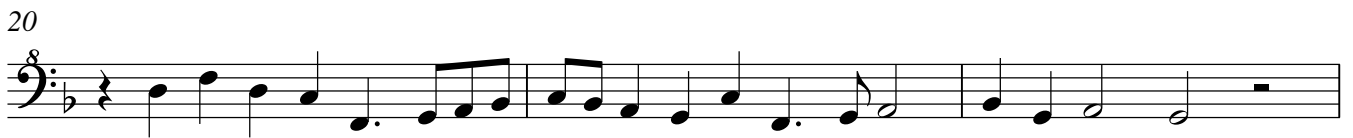
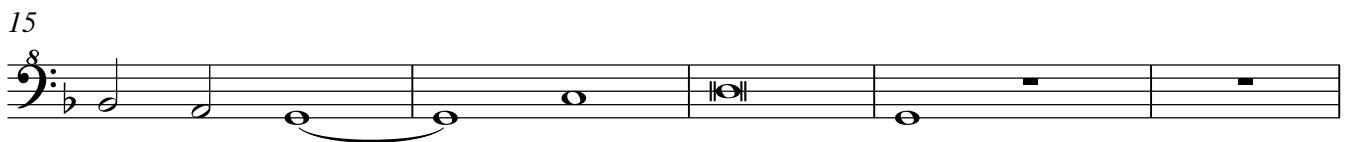


In Nomine Through All Parts / In Nomine Fantasia

Great Bass Recorder

(Adapted for recorders by separating the 2 bass parts into bass and C-bass by MG. This causes In Nomines 5 and 6 to exchange parts sometimes)

♩ = 108



38



41



47



50



53

IN5

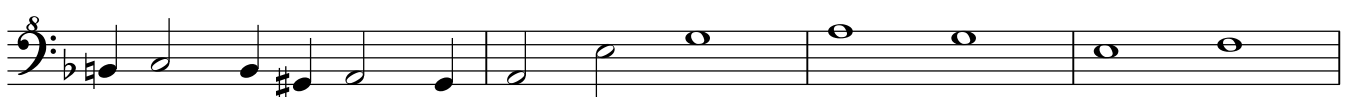


57



61

IN5cont.

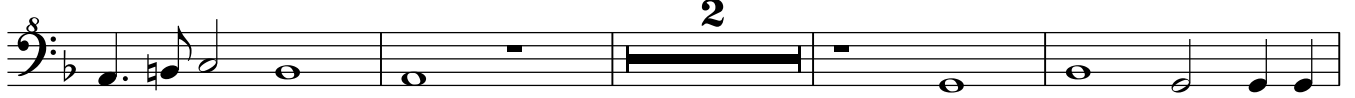


65



69

IN6



75



79



83



87



90

