

La Dauphine

Pièce de Clavecin de Rameau

The first system of the manuscript features two staves. The upper staff is written in treble clef with a key signature of one sharp (F#) and a 3/4 time signature. It contains a melodic line with various note values and rests. The lower staff is in bass clef and provides harmonic accompaniment with chords and single notes.

The second system continues the piece with two staves. The upper staff shows a continuation of the melodic line, while the lower staff provides accompaniment. A red circular stamp is partially visible on the left side of this system.

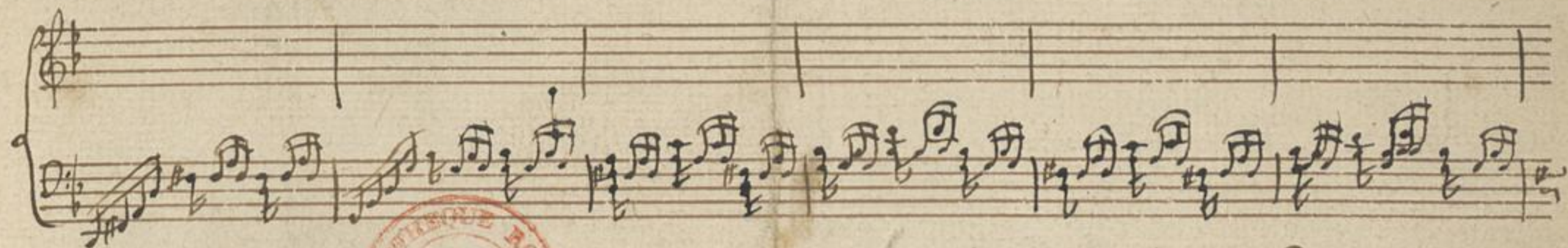
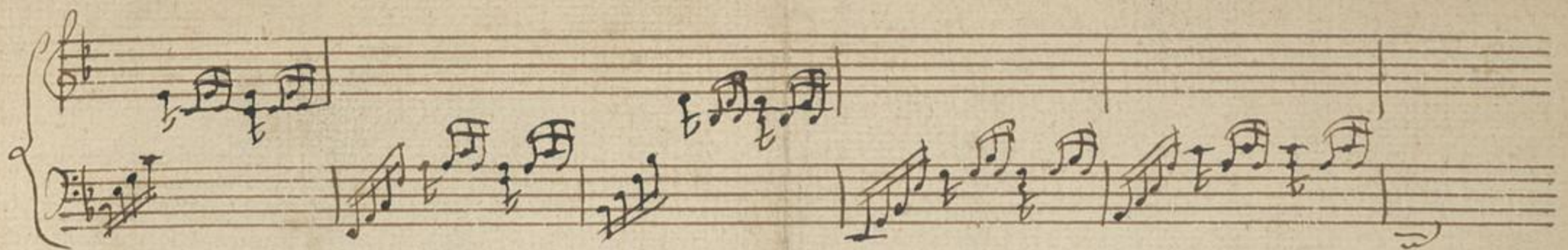
The third system consists of two staves. The upper staff contains a melodic line with some complex rhythmic patterns. The lower staff features a bass line with frequent quarter notes and rests.

The fourth system has two staves. The upper staff shows a melodic line with some ink blots or corrections. The lower staff continues the accompaniment. A red circular stamp is partially visible on the left side.

The fifth system consists of two staves. The upper staff contains a melodic line with various note values. The lower staff provides accompaniment with a mix of notes and rests.

Res Vm⁷ 550 (1)

SON
DE LA FAMILLE
DES ROIS.



*cette Lipca est la copie originale de la main même du fameux
Rameau.*