

molto *i lumi chrye. as* *Fine*

22 *Sinfonia Auanti* *Grave*

22 *Sinfonia Auanti* *Grave*

Handwritten musical score on three staves. The first staff begins with a treble clef and a key signature of one flat. The notation includes quarter notes, half notes, and a complex sixteenth-note passage. The word *presto* is written above the first staff. The second staff continues the melodic line with similar note values and a sixteenth-note passage. The third staff features a bass clef and a time signature of 4/3, with a *presto* marking below it. The page is numbered 81 in the top right corner and 43 in the middle left.

Handwritten musical score on three staves. The first staff begins with a treble clef and a key signature of one flat. The notation includes quarter notes, half notes, and a complex sixteenth-note passage. The second staff continues the melodic line with similar note values and a sixteenth-note passage. The third staff features a bass clef and a key signature of one flat, with a complex sixteenth-note passage. The page is numbered 81 in the top right corner and 43 in the middle left.

Handwritten musical score for three staves. The top two staves are in treble clef, and the bottom staff is in bass clef. The music features complex rhythmic patterns, including sixteenth and thirty-second notes, and rests. The notation is dense and characteristic of 18th-century manuscript style.

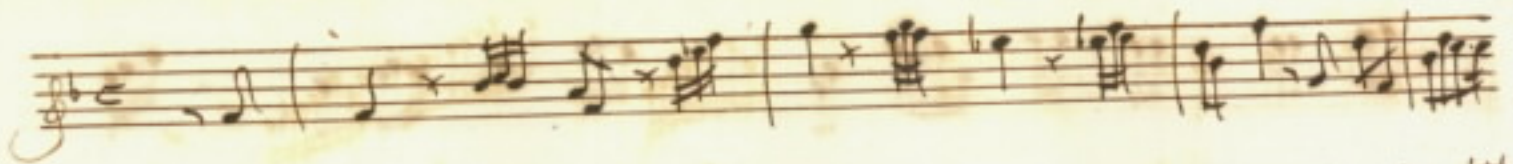


Handwritten musical score for one staff in treble clef. The music begins with a dynamic marking of *forte* and consists of a series of rhythmic notes, including quarter and eighth notes, with some slurs.

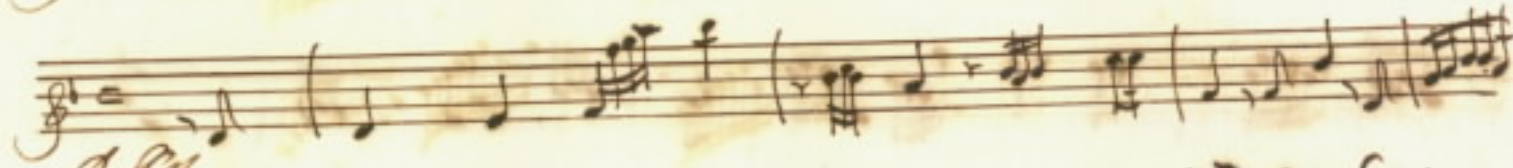
Handwritten musical score for one staff in treble clef. The music consists of a series of rhythmic notes, including quarter and eighth notes, with some slurs.

Handwritten musical score for one staff in bass clef. The music begins with a dynamic marking of *forte* and includes various rhythmic values such as quarter, eighth, and sixteenth notes. The piece concludes with the word *Segue* written in a decorative script.

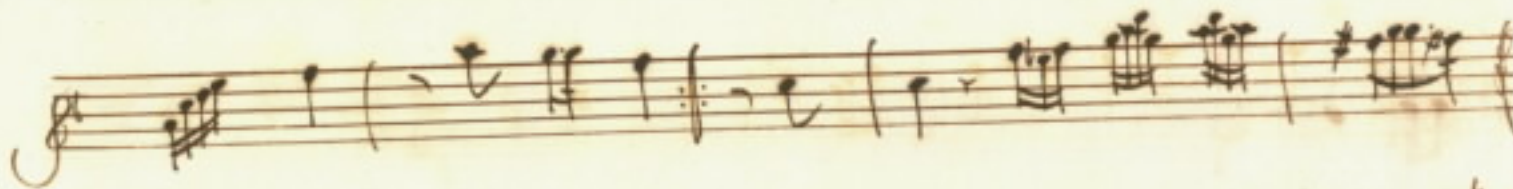
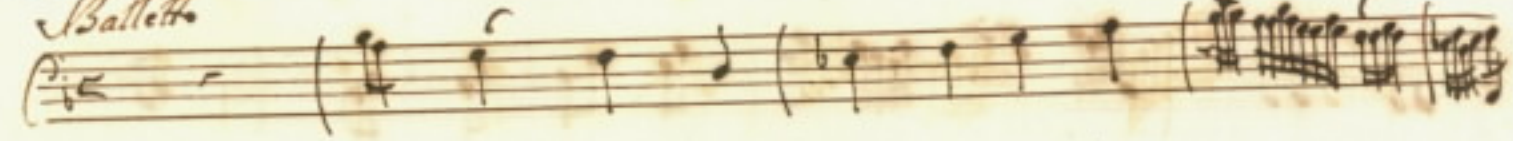


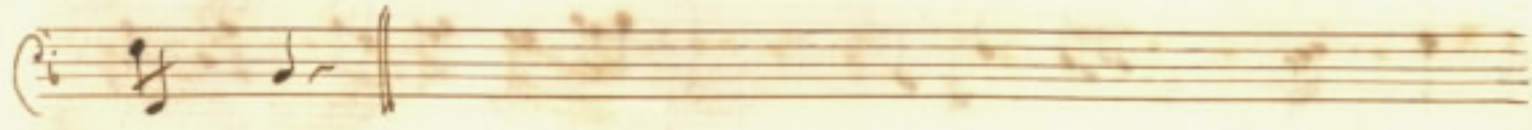
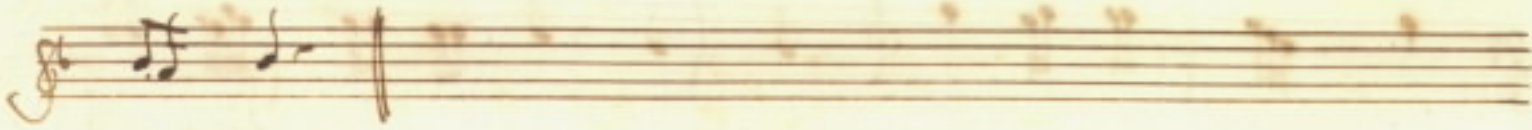
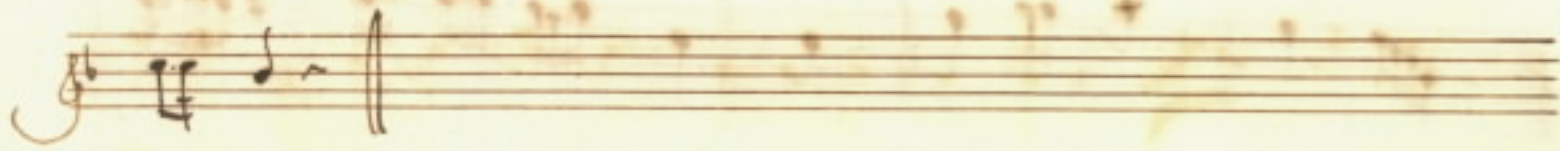
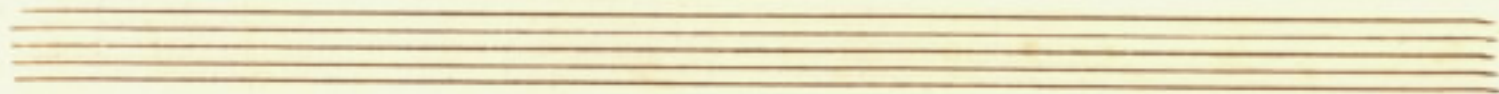
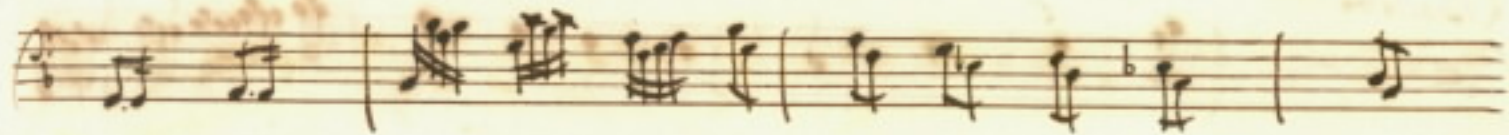
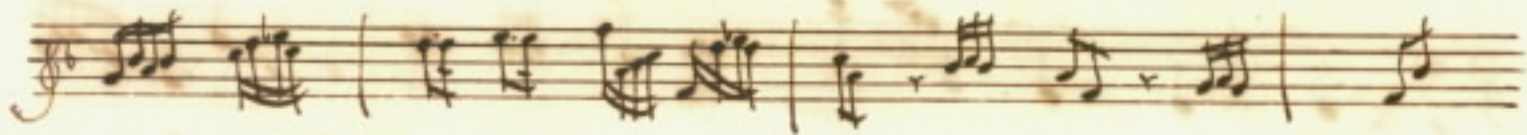
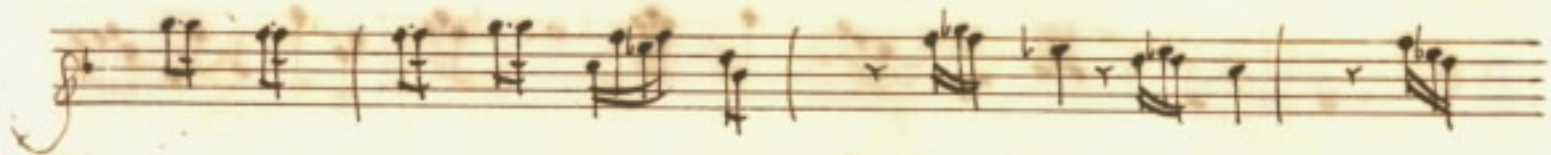


52
83



Ballett





Serenata à solo

Corre = = = = a
 Pi o o

nel seno amato Ver l'Occidente
 Pi o o

fretto = lo = = so il Me e con fiamme brillanti
 Pi o o

il suo carro nel lato già riulge = = = va al Mare il
 Pi o o

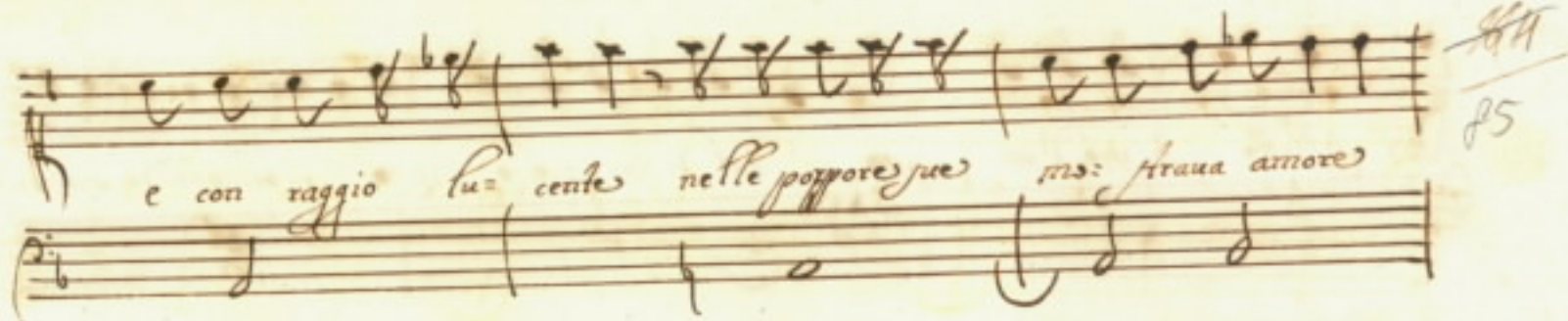
pigro Ar: lux e la notte se: vera l'ombre fuggendo à'

fiac = = = cele di Aelle mostrauai à mortal fia le piu belo'

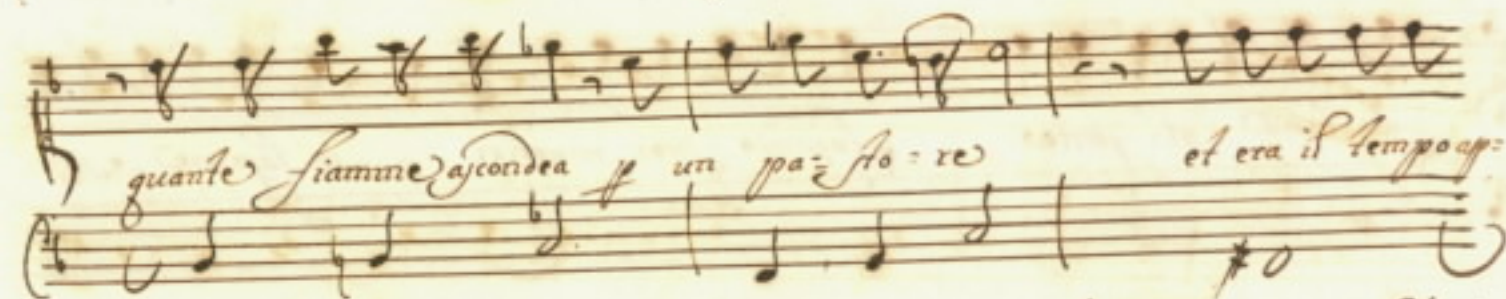
roseggiante nel

Chijsi sorgea tutta ridente dal letto Pastoral la bella dea

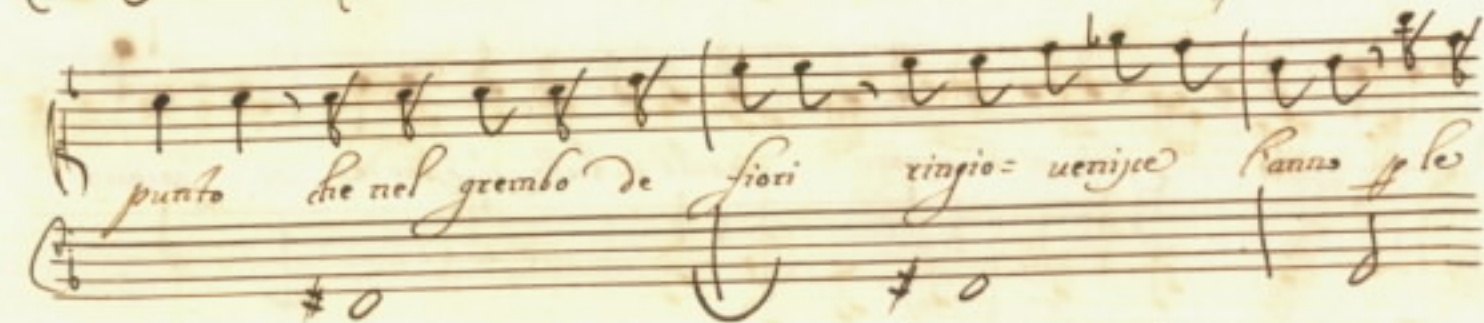
84
85



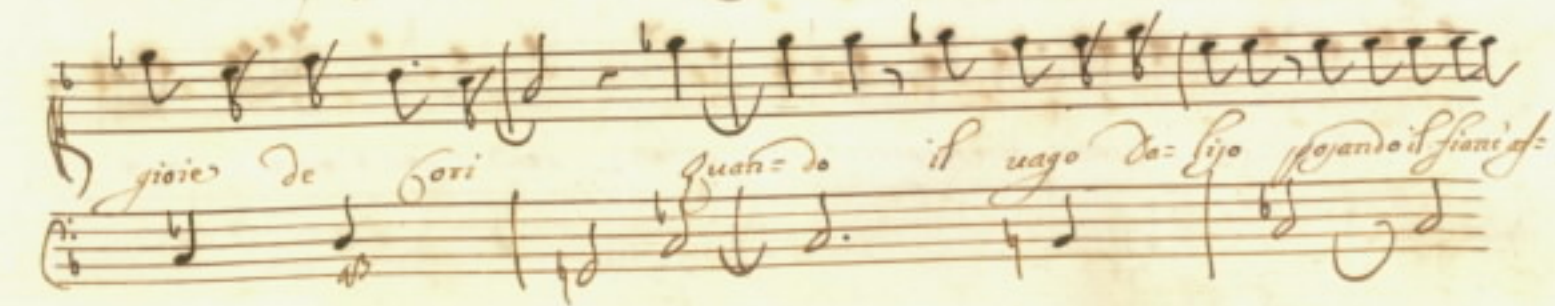
e con raggio lucente nelle poppore sue ins: fraua amore



quante fiamme ardeua & un pa: so: re et era il tempo ap:



punto che nel grembo de fiori ringio: uenire l'anno p'le



gioie de fiori Quan: do il uago da: l'ijo spando il fiani: of:

Stillo a piè d'un *scoglio* dal di cui mezzo *uscì* mormorando *scorrea*

fontana al: gente *soffrendo* i suoi martiri *in* lagrime, e so=

spiri *Sto* *fra* molti orrori *mentr'* a tutti *si* *asconde* *pian=*

fec sospi= *ri* *pian=* ti, e *sospiri* *conson=* *dea* *con* l'on= = =

ff
86

De e P. humilote

quancie di perle lagri = = moys che dal cor distil = laua il suo do =

lores ter = = gea tutta pietas ter = gea tutta spietas spie =

ta = = = = = to Amo = = res Anche al fin la sua

membra dal lungo raggi = rari in seno all' orbe martire, all' d'Angelo si =

Tando i lumi al cielo coji con l'au = re, el vento spoga = ua si =

gnozzando il suo tormen =

to coji con l'au = re, el ven = to spoga = ua si = gnozzane

Handwritten musical notation on two staves. The top staff is a vocal line with lyrics "No il suo formen =". The bottom staff is a piano accompaniment. The music is in a minor key, indicated by a flat sign on the first line. There are some markings like "43" and "49" in the piano part.

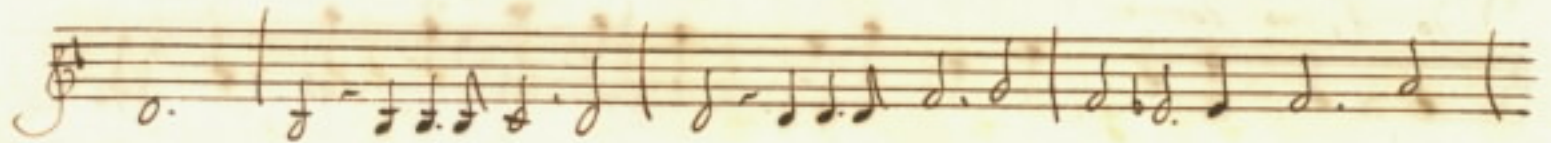
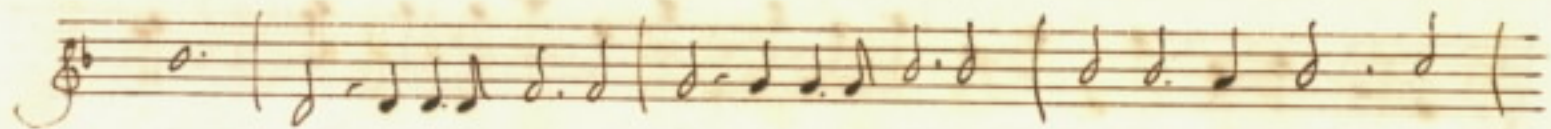
Handwritten musical notation on two staves. The top staff is a vocal line. The bottom staff is a piano accompaniment. The word "Segue" is written in a large, decorative cursive script across the middle of the staves.

Handwritten musical notation on a single staff, likely a piano accompaniment. It features a series of eighth and sixteenth notes.

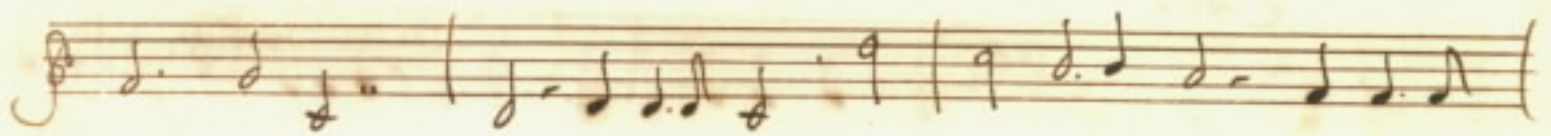
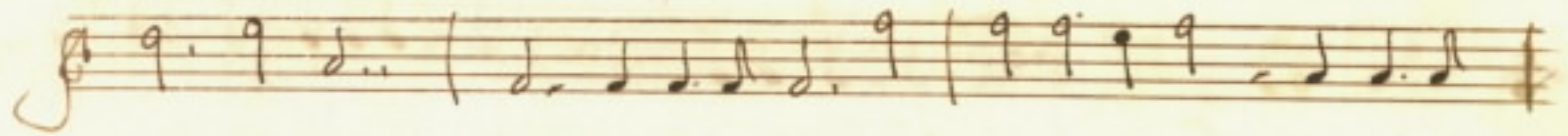
Handwritten musical notation on a single staff, likely a piano accompaniment. It features a series of eighth and sixteenth notes. The word "Aria" is written in a decorative cursive script above the staff.

Handwritten musical notation on a single staff, likely a piano accompaniment. It features a series of eighth and sixteenth notes. The word "Largo" is written in a decorative cursive script above the staff.

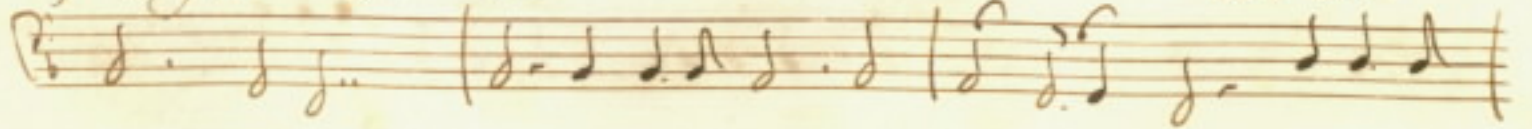
Handwritten musical notation on a single staff, likely a piano accompaniment. It features a series of eighth and sixteenth notes.

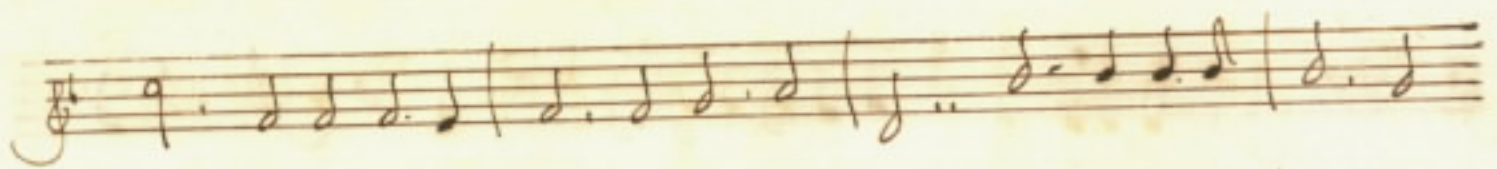


ombre opaque *ch'il chiarore* *del la luce*

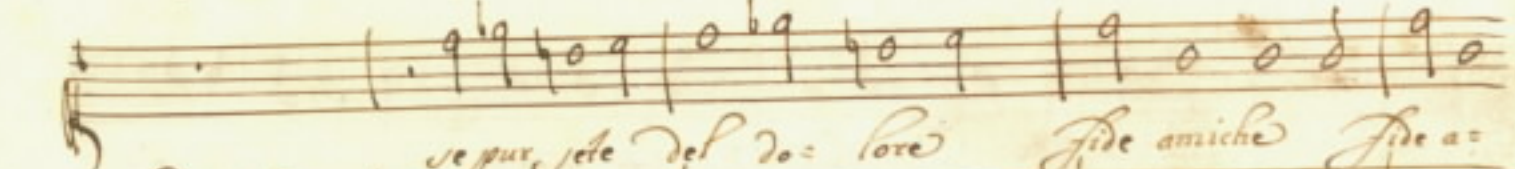
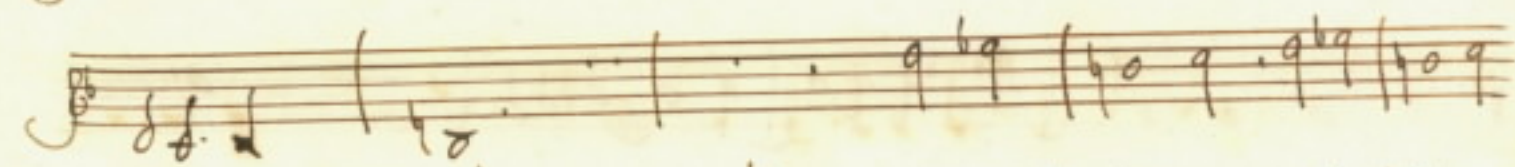
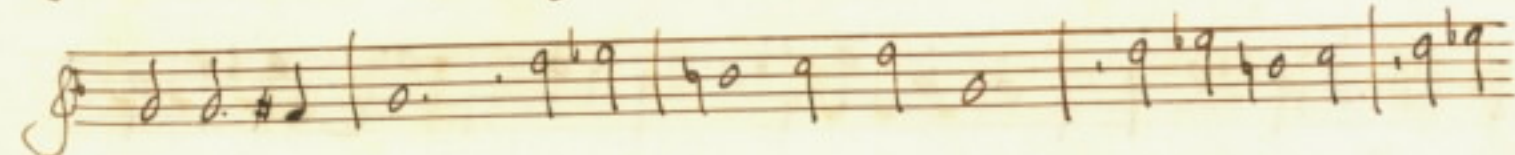
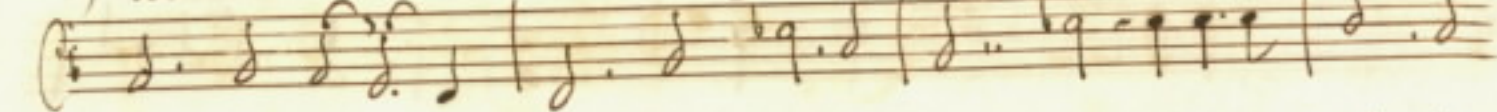
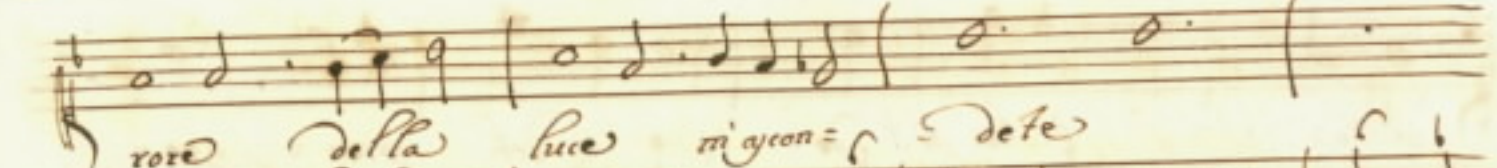


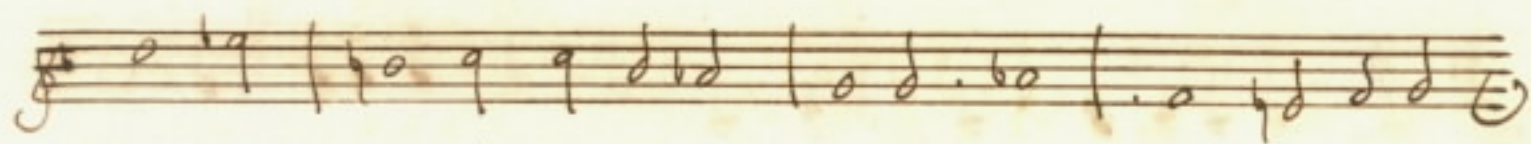
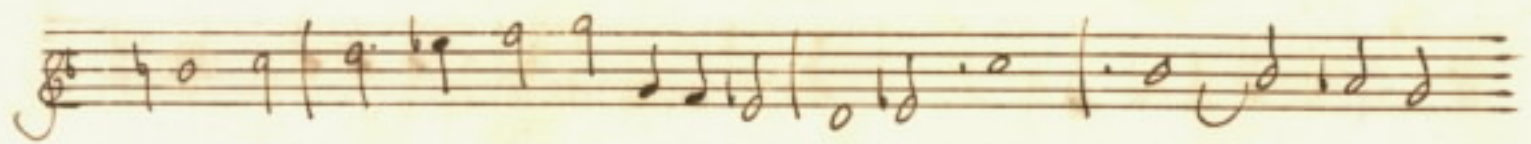
m'aycon = de = te *ch'il chia =*



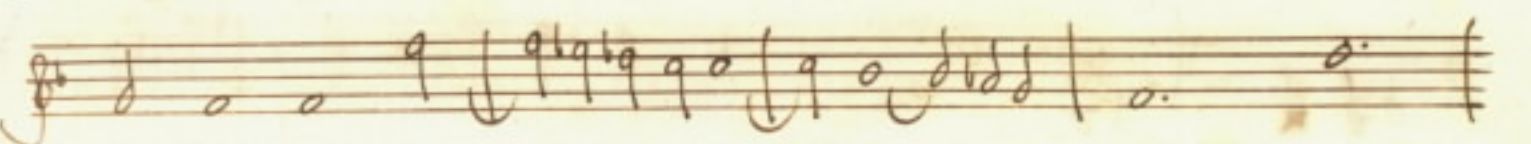
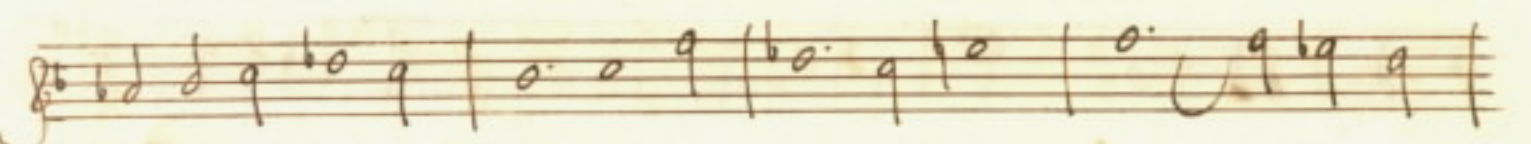


~~ff~~
ff

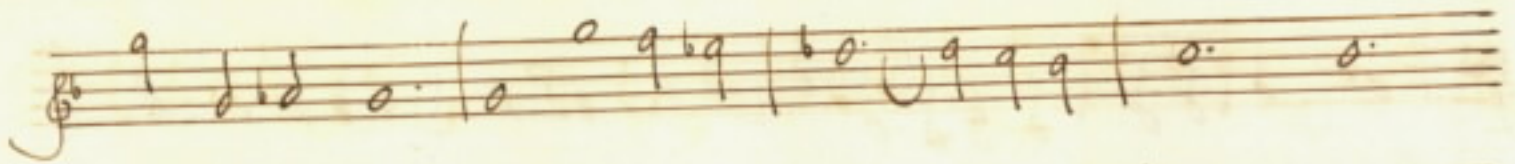




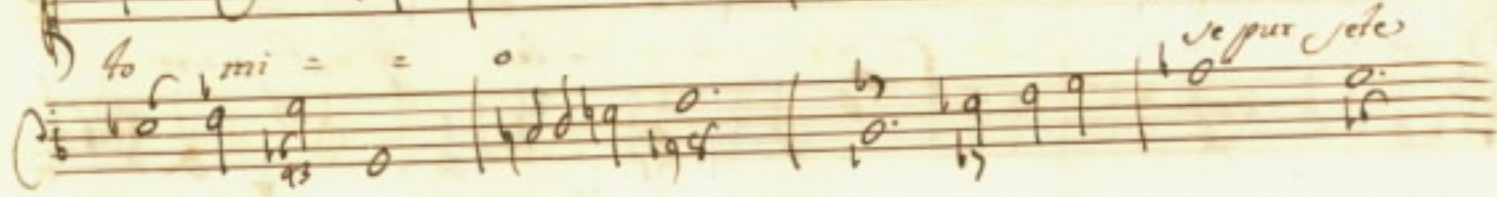
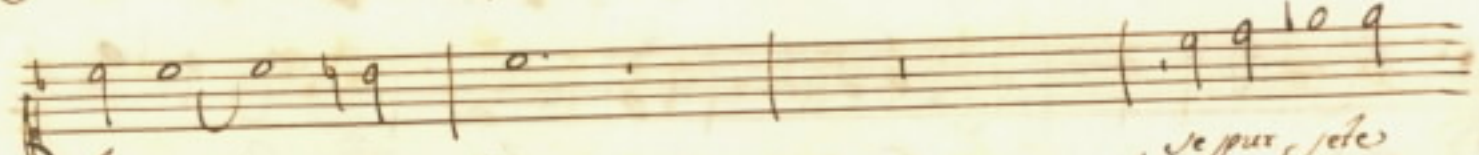
miche *hor ch'il de = = vio deh pian = = ge =*



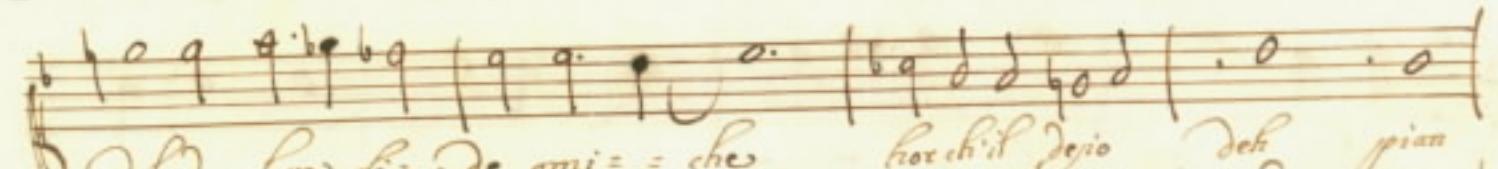
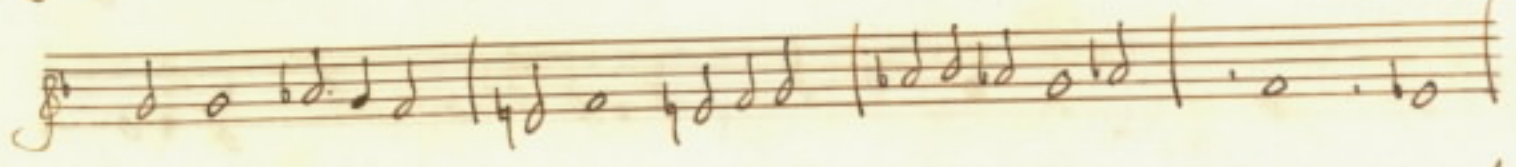
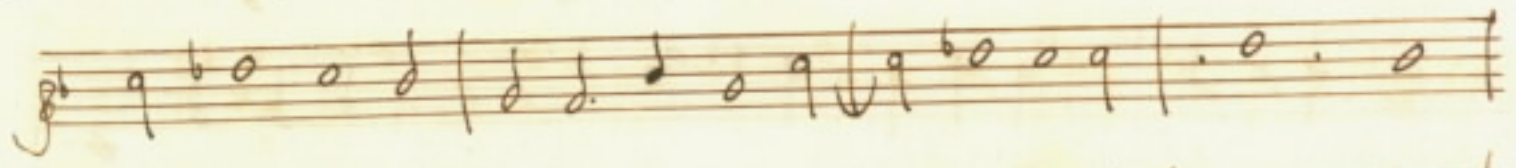
te al pian = = =



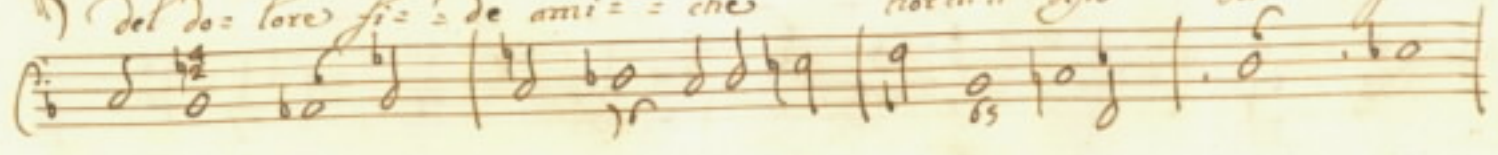
276
fol

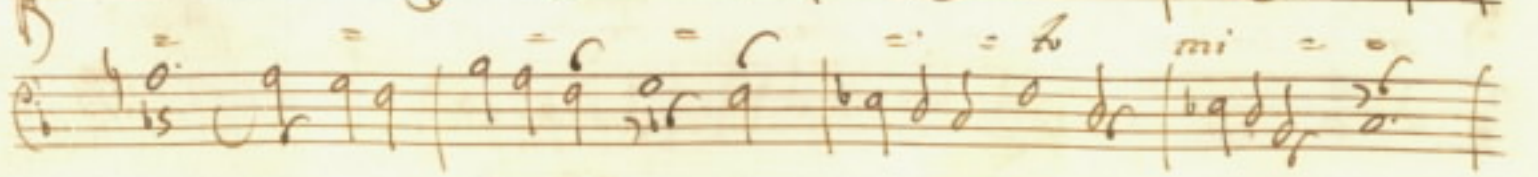
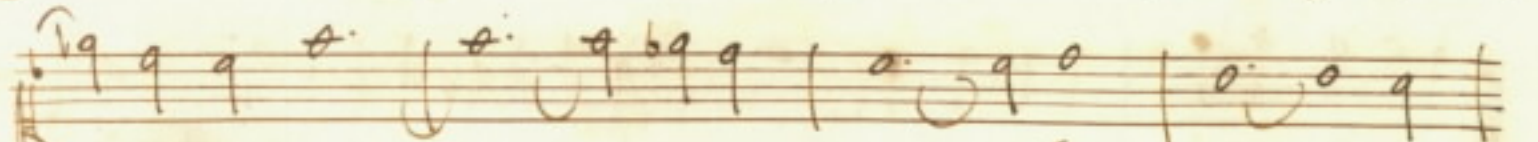
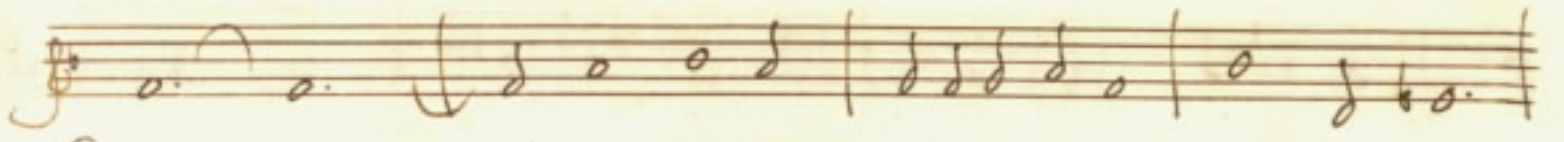
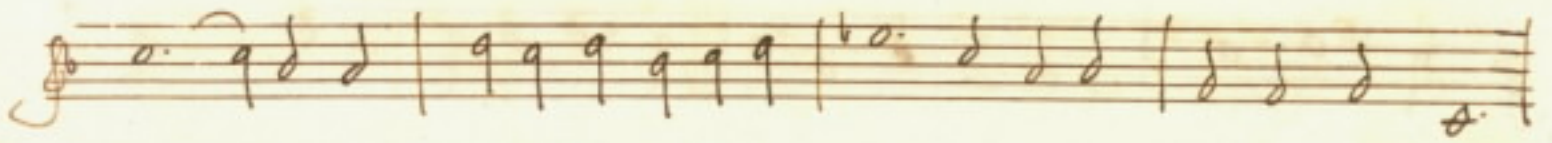
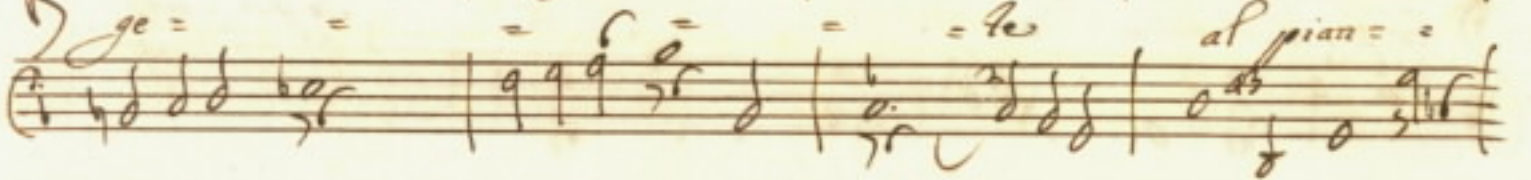
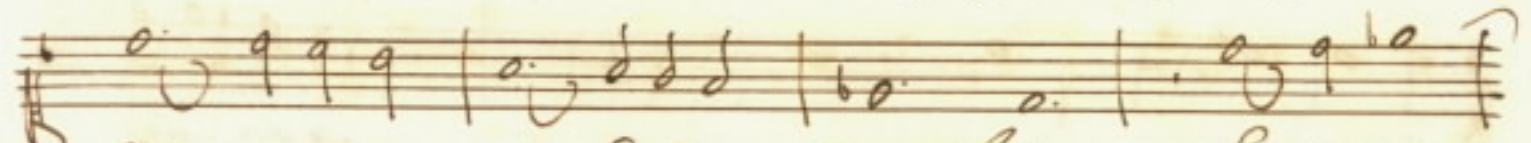
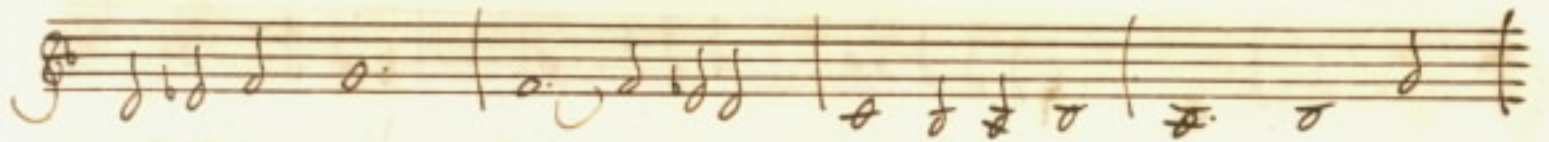
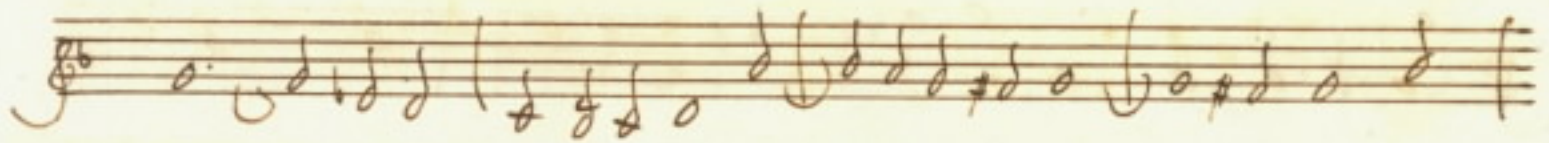


Je pur Je te



del Do = lore fi = = de ami = = che hor ch'il Deo del pian





Handwritten musical notation on a single staff, featuring a treble clef and a key signature of one flat. The notation includes quarter notes, eighth notes, and quarter rests. A handwritten number "20" is written in the right margin.

Handwritten musical notation on a single staff, continuing the piece with various rhythmic values and rests.

Handwritten musical notation on a single staff, including dynamic markings: *al*, *pian = f*, and *mi = o*. The notation features a mix of note values and rests.

Handwritten musical notation on a single staff, showing a continuation of the melodic line with various note values.

Handwritten musical notation on a single staff, featuring a sequence of notes and rests.

W. B. White

Handwritten musical notation on a single staff, mostly consisting of rests and a few notes.

Handwritten musical notation on a single staff, concluding the piece with several notes and rests.

Du-rilla Ani-ma mia gioia delle mie

pene se t'en vai mori-ro Ga-ro ca-ro mio be-

ne deh pianzete per meco a si duo novelle H pieta'

ve lo chiedo amiche Ad- = = = b. Siegue

Handwritten musical score for the first system, consisting of three staves. The top staff begins with a treble clef and a 3/8 time signature. The middle staff has a "Rit." marking above it. The bottom staff has a "6." marking above it. The music is written in a cursive, handwritten style.

Handwritten musical score for the second system, consisting of three staves. The bottom staff ends with the instruction "Alta Subito" written in cursive. The music continues in the same handwritten style as the first system.

Aria Sicche brine che pieloce Sicche

brine che pieloce ranni = uate queste rose e bacia = te

e bacia = te e bacia = te il lembo ai fior e bacia = te il lembo ai fior

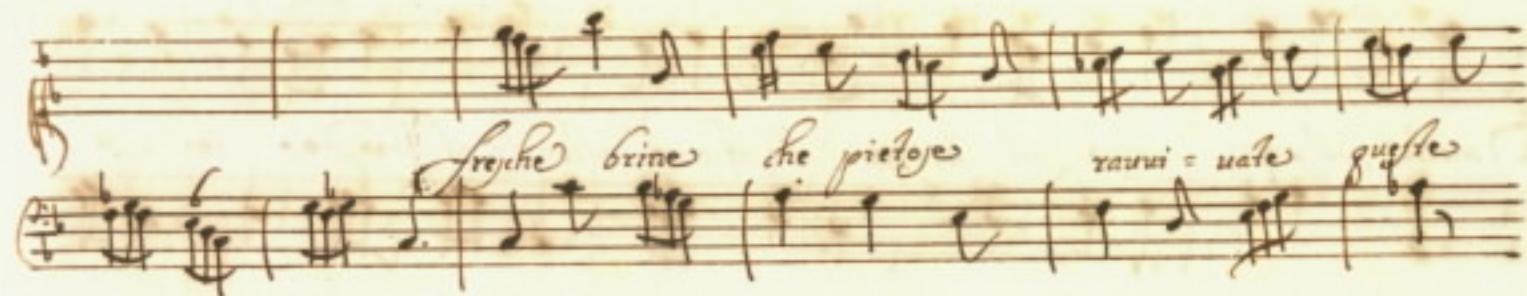
Deh ca: dete e pelli = dette trasformate in lacri =

molto *Al pianz* *gete* *Al piange* *te* *al mio dolor* *al mio do:* *lor* *al*

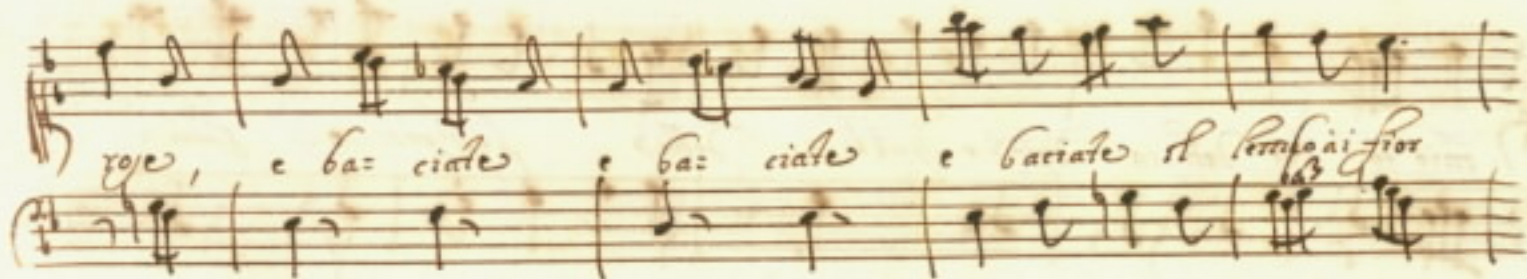
al mio do: *lor* *del ca:* *dete* *e* *palli:* *dette* *trasformate* *in* *lacr:*

molto *Al piangete* *al mio do:*

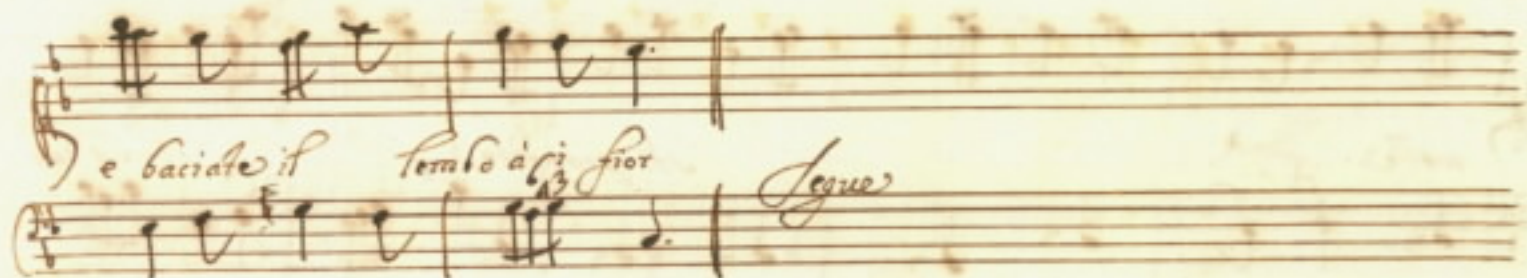
lor *Al piangete* *al mio dolor* *scuche* *grine* *che* *pietoze*



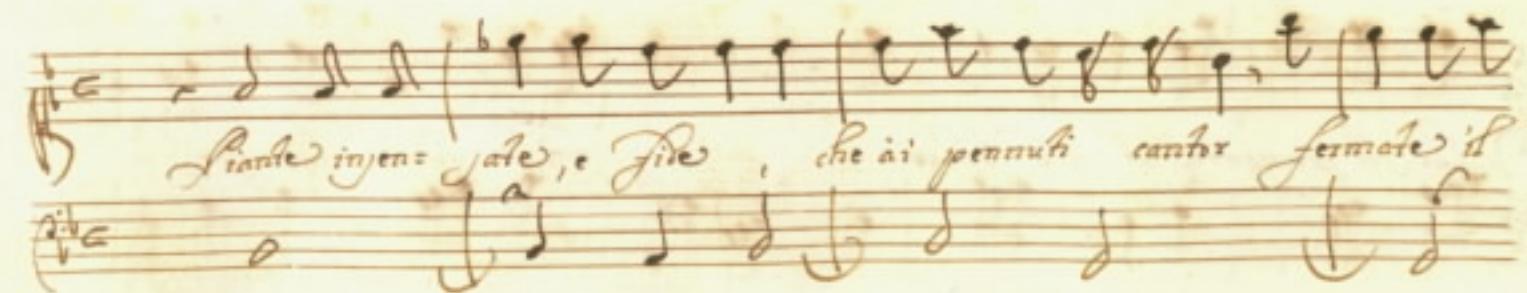
freche brine che pietose rauri = uate gustate



roze, e baciato e baciato e baciato il petto ai fior



e baciato il seno ai fior *Segue*



Lianze inzen = zate, e fide, che ai pentuti cantor fermate il

Ado al dolor che mi *uccide* *Stilla* = = *te* *di* *mirra* *hu* =

mor nel *judlo* *et* *hor* che *parte* *curilla* *meco* *tutte* *piangete*

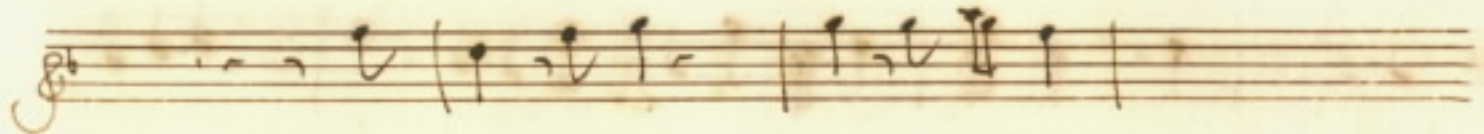
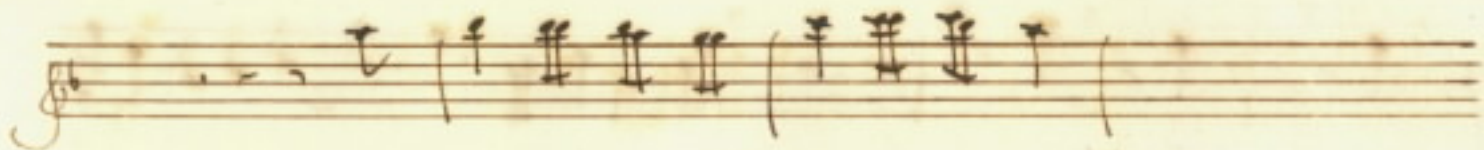
il *perduto* *diletto* *quando* *lieta*, *e* *ridente* *al* *raggio* *bel* *dell'*

ado = *rato* *Ujo* *so* = *lea* *quini* *recarci* *il* *Paradiso*

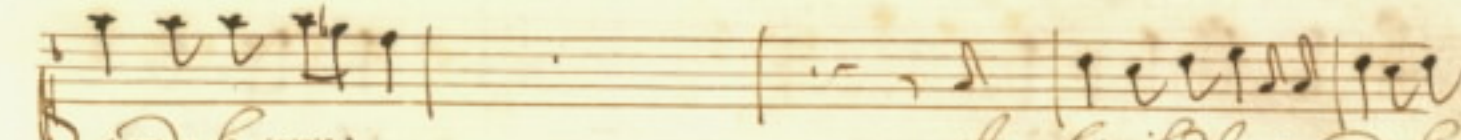
Alia

f = dolo ama = to *for = mento del co = re*

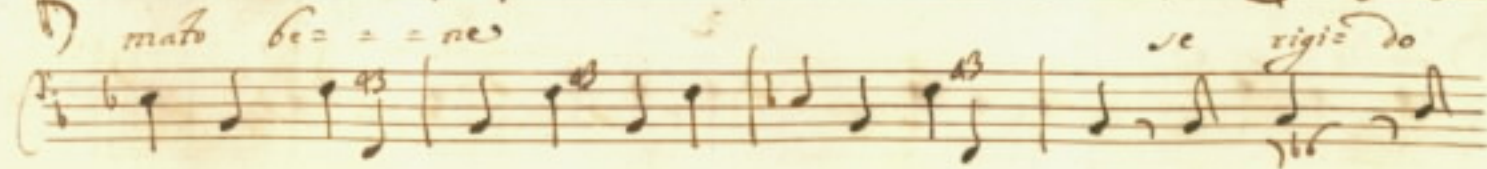
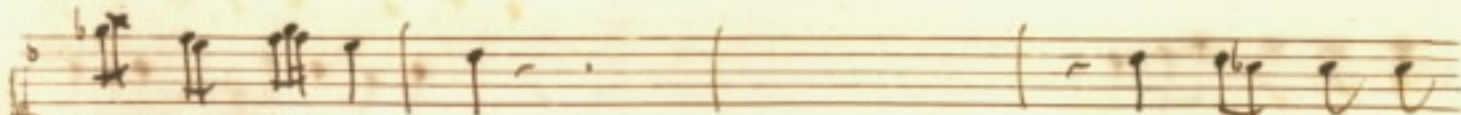
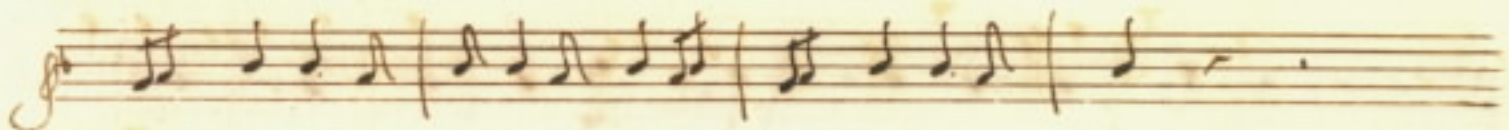
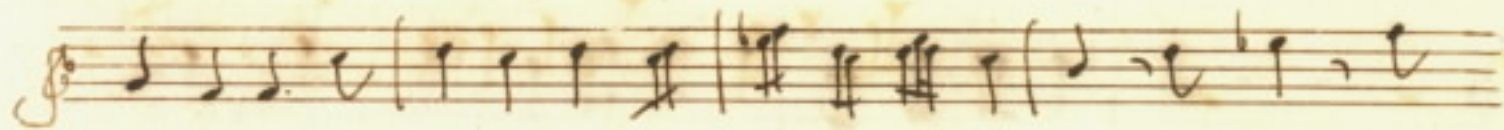
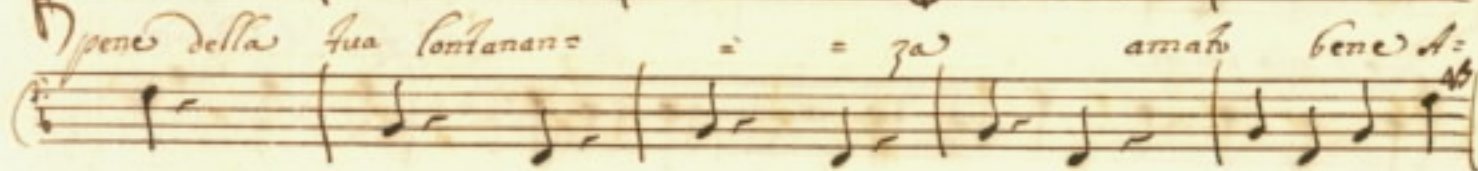
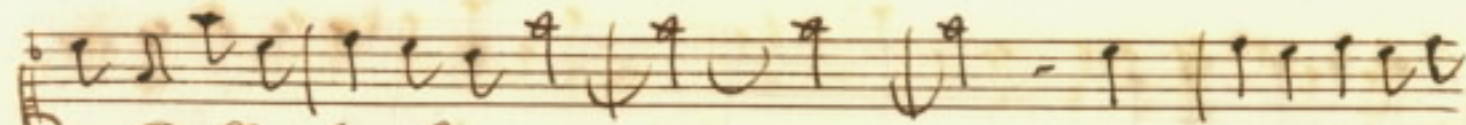
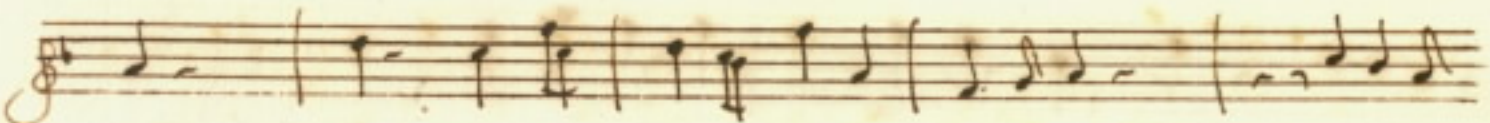
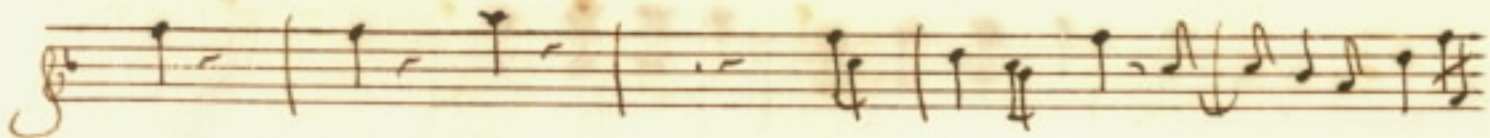
torment = to del core *se rigido fatto tra =*



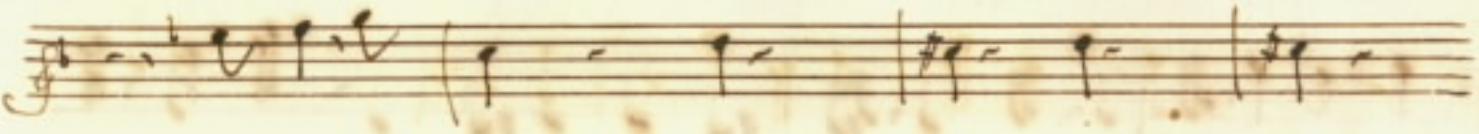
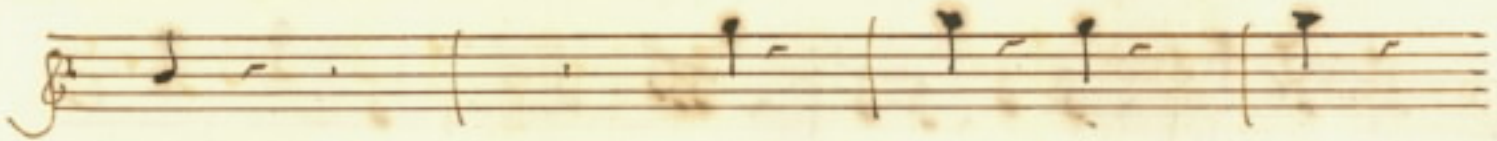
Primo il mio amore *sf: primo il dolore a:*



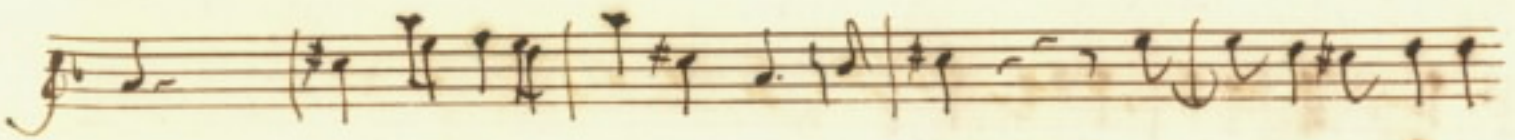
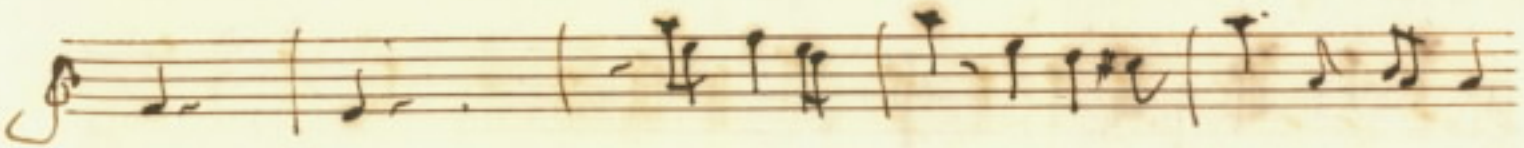
Secondo le pene *sf: primo il dolore secondo le p.*



94
95

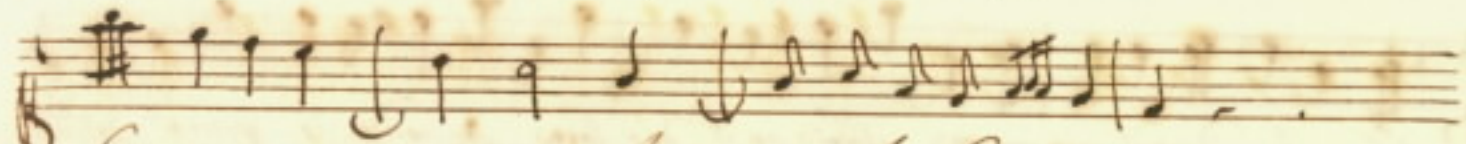
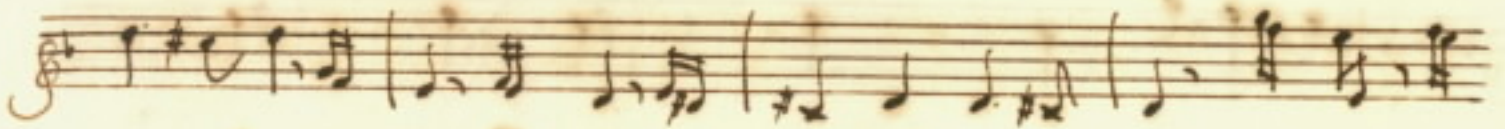
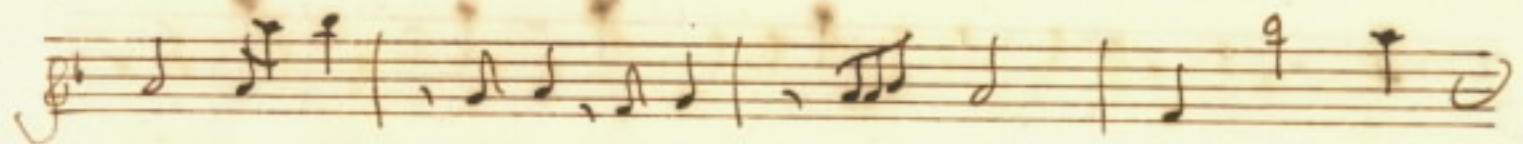


fato tra: dice il mio amore affri: sco il do: lore a: conda le penes della

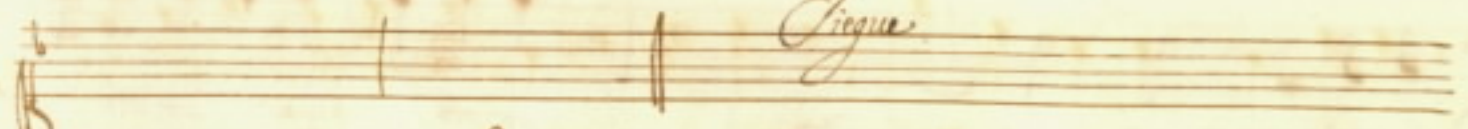
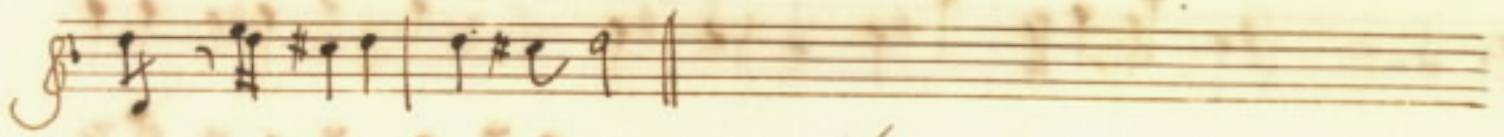
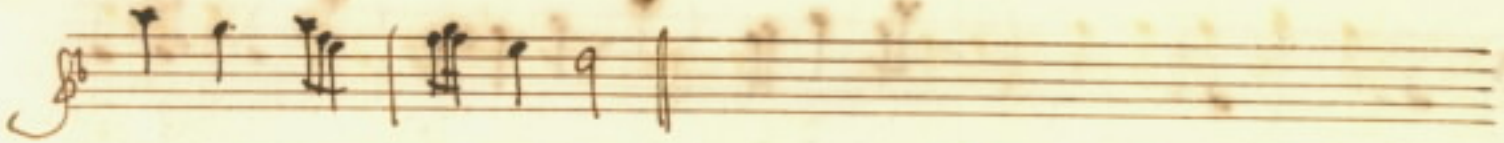


sua lontanan = = = = = pa amato bene amato

98 4.13 99 4.13



6e = = ne a = = ma = = to , amato 6e = = = ne



Sigue



Mà voi occhi = do = senti Interni che farrete

quando priujsa = rete delle bellezze sue e sempre ridenti

ah daljo infe = lice intendi il tuo destino sai ciò che

Budle a = moret ti arda in fiamme di dullo, e pianza e pianza il

Handwritten musical notation on a single staff, featuring a treble clef, a key signature of one flat (B-flat), and a common time signature (C). The notation includes several measures of music with complex rhythmic patterns, including sixteenth and thirty-second notes.

Handwritten musical notation on a single staff, featuring a treble clef, a key signature of one flat (B-flat), and a common time signature (C). The notation includes several measures of music with complex rhythmic patterns, including sixteenth and thirty-second notes.

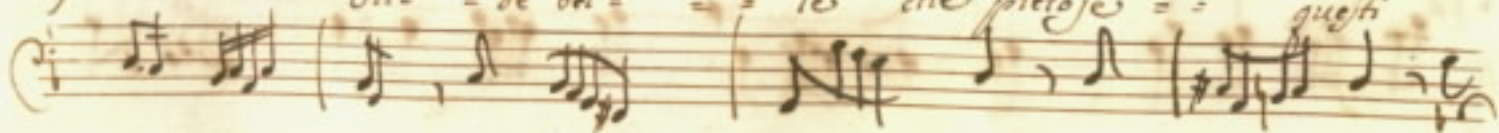
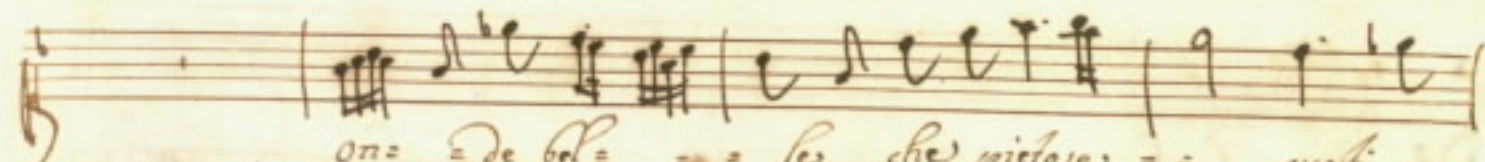
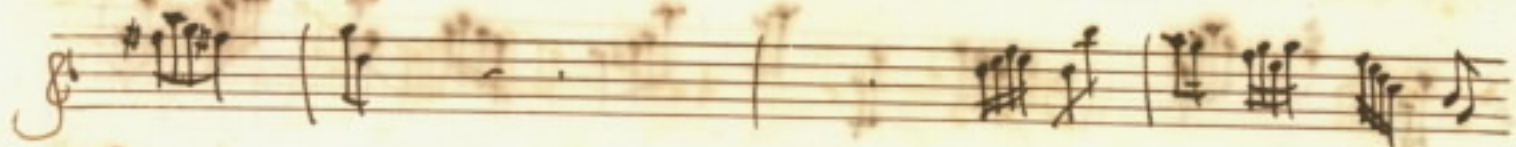
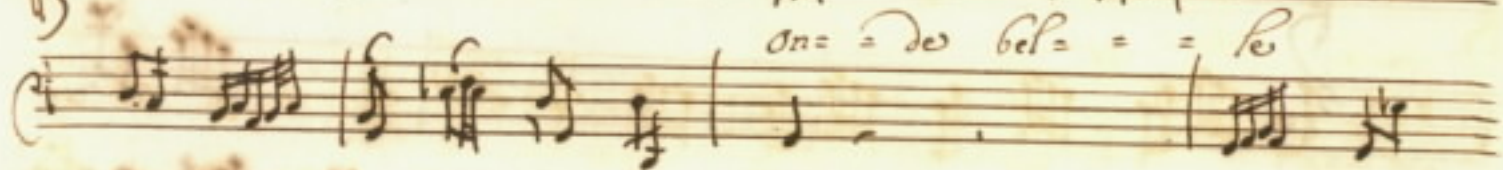
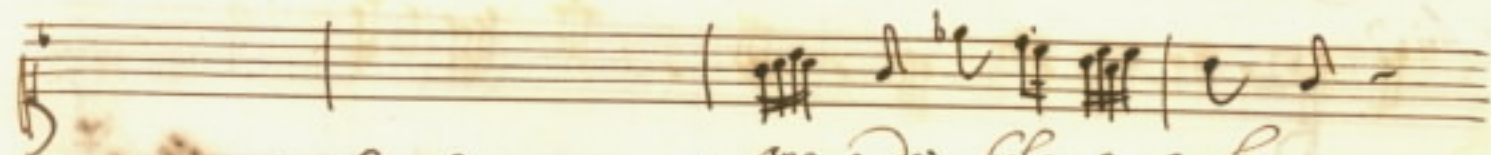
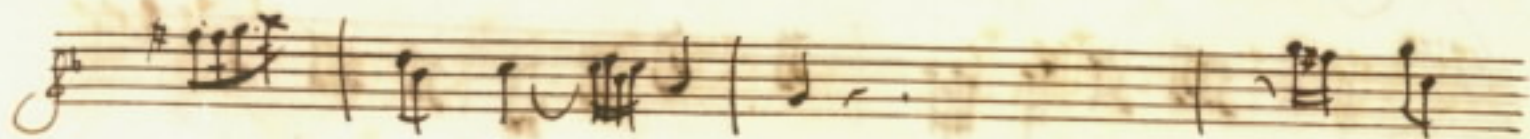
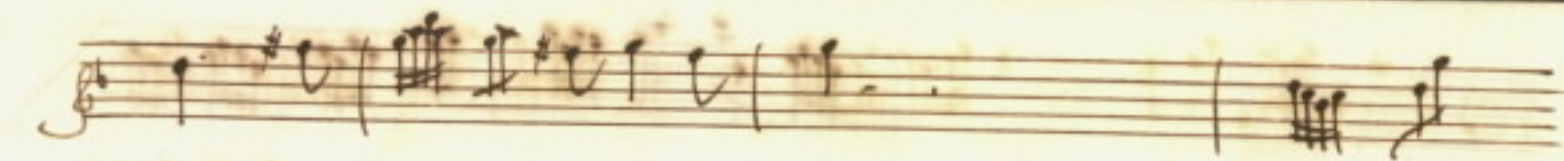
Handwritten musical notation on two staves. The top staff features a treble clef, a key signature of one flat (B-flat), and a common time signature (C). The bottom staff features a bass clef, a key signature of one flat (B-flat), and a common time signature (C). The notation includes several measures of music with complex rhythmic patterns, including sixteenth and thirty-second notes.

Handwritten musical notation on a single staff, featuring a treble clef, a key signature of one flat (B-flat), and a common time signature (C). The notation includes several measures of music with complex rhythmic patterns, including sixteenth and thirty-second notes.

Handwritten musical notation on a single staff, featuring a treble clef, a key signature of one flat (B-flat), and a common time signature (C). The notation includes several measures of music with complex rhythmic patterns, including sixteenth and thirty-second notes.

Handwritten musical notation on a single staff, featuring a treble clef, a key signature of one flat (B-flat), and a common time signature (C). The notation includes several measures of music with complex rhythmic patterns, including sixteenth and thirty-second notes.

Handwritten musical notation on a single staff, featuring a treble clef, a key signature of one flat (B-flat), and a common time signature (C). The notation includes several measures of music with complex rhythmic patterns, including sixteenth and thirty-second notes.



Handwritten musical notation on two staves. The first staff is in treble clef and the second in bass clef. Both staves contain complex rhythmic patterns, including sixteenth and thirty-second notes, and dense chordal textures. The notation is in brown ink on aged, stained paper.

Handwritten musical notation on two staves. The first staff is in bass clef and begins with a 4/4 time signature. The second staff is in bass clef and contains dynamic markings: *e* *Allo = = ro = ro* and *e* *Allo = = ro =*. The notation includes various rhythmic values and chordal structures.

Handwritten musical notation on two staves. The first staff is in treble clef and the second in bass clef. Both staves feature sixteenth-note runs and complex rhythmic patterns. The notation is in brown ink on aged, stained paper.

Handwritten musical notation on two staves. The first staff is in treble clef and the second in bass clef. The notation includes dynamic markings: *con lugubre*, *normo = ro*, *con lugubre*, and *normo =*. The notation includes various rhythmic values and chordal structures.

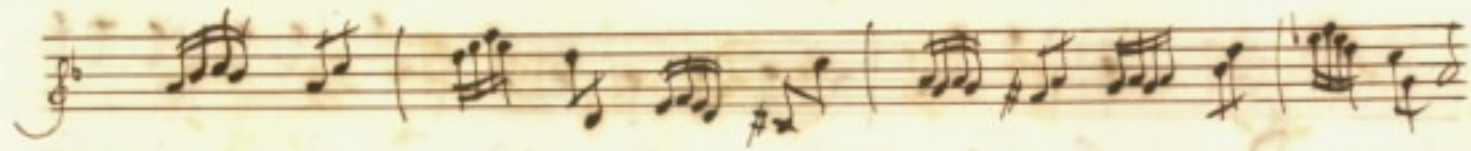
ris mormo = = ris deh piange = = = = =
= to = = al : pian = = to mi = =

This image shows a page of handwritten musical notation on aged, yellowed paper. The score is arranged in ten staves, organized into five systems of two staves each. The notation includes various musical symbols such as notes, rests, beams, and clefs. The paper shows signs of age, including foxing and water stains. The handwriting is in dark ink, and the overall appearance is that of an antique manuscript.

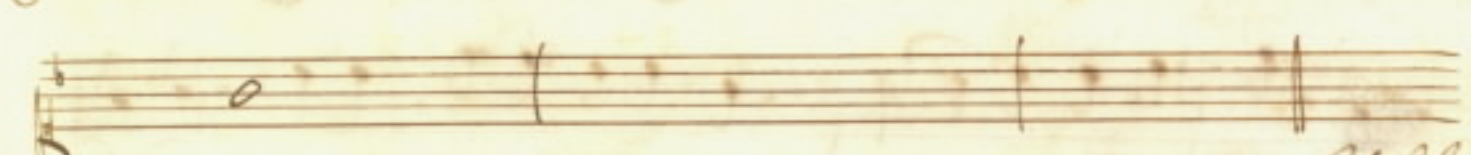
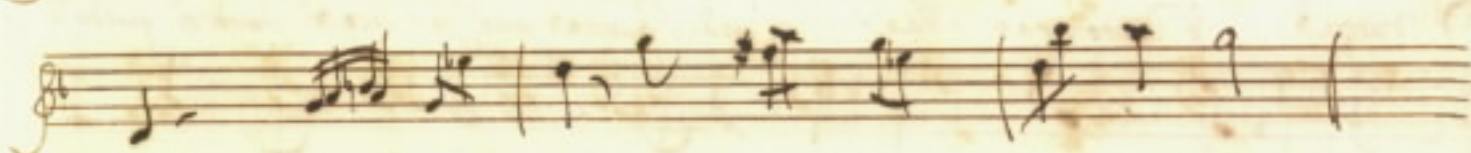
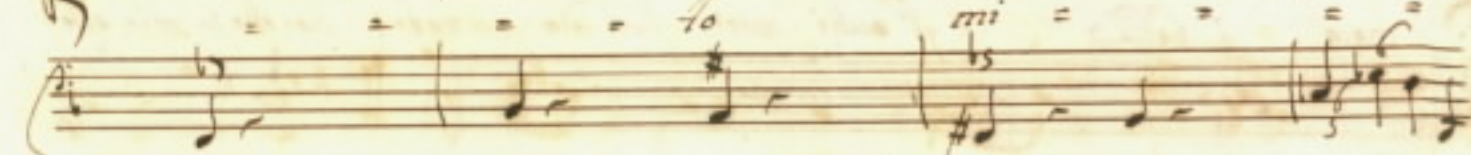
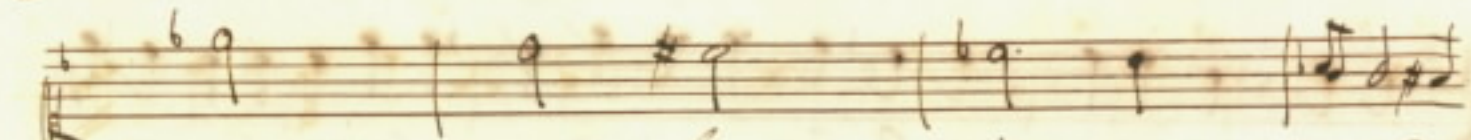
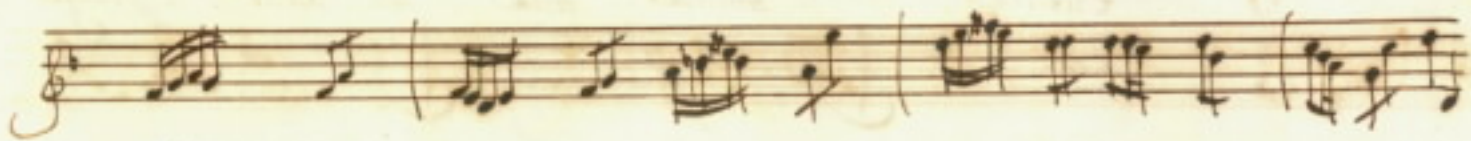
The notation includes various musical symbols such as notes, rests, beams, and clefs. The paper shows signs of age, including foxing and water stains. The handwriting is in dark ink, and the overall appearance is that of an antique manuscript.

Delicate *piange* = = = =

al *pian* = = = =



99
100



M. Adria

Luzilla anima mia deh vieni a pianger

meo o bella a gl'occhi miei luce adozzata horche la mia spe=

ranga e disperata ma dante pur felice doue ti guida il

fato luzilla mia e se fortunata non del

For ma da gl'occhi allontana il mio bene benchè ne senta pena

godo del tuo gioire e brama solo di aver l'amore che di

me rimembranza habbi nel core Vanne, che non mi

bene che sempre fido amante io l'accompagnerò ed il pianto mio

Grave

Luceilla anima mia anima mia Luceilla

illa addio Vegue

Grave

Vegue

Vegue piu' dir da = Ho mia punto d'impero

