





Handwritten musical score on aged, stained paper. The score consists of ten staves of music, each with a treble clef and a key signature of one sharp (F#). The lyrics are written in Latin and are interspersed with the musical notation. The lyrics are:   
1. *erigens pauperes erigens pauperes lauda-*  
2. *se patre et dominum laudare nomen domi-*  
3. *ni ut collocet eum ad principibus et prin-*  
4. *cipibus laudare patre et dominum*  
5. *laudare nomen domini qui habitare*  
6. *facit in ceteris in ceteris in do-*  
7. *mo ma*  
8. *no fili-*  
9. *no fili*  
10. *no fili*  
The music features various note values including minims, crotchets, and quavers, with some measures containing rests. There are some markings like '12' and 'solo' in the score.



oro le san- te fi li o ro fi li o ro le

ta - - - te le san. - te le san- te le san-

te le san. - te

*Quasi*

lo ri a pas - - - vi et fi li o

et spi ri tu i san cto si ul - e ras in qui -

ei pi o et nunc et semper et in se cu -

la se cu lo rum a -

me - - - me -

9. a - - -



Handwritten musical notation on two staves. The top staff contains a melodic line with several groups of beamed eighth notes. The bottom staff contains a corresponding line with lyrics written below it: "mo a" under the first group, "mo a" under the second group, and "mo" under the final group. The notation is in brown ink on aged, yellowed paper.

Seven empty musical staves, each consisting of five horizontal lines. The paper shows significant signs of age, including foxing and staining. Faint, ghostly impressions of the musical notation from the top two staves are visible through the paper, particularly on the lower staves.



2. Cantor 2.<sup>o</sup> Choro.

Handwritten musical score for a choir, featuring Latin lyrics and musical notation on staves. The score is written in a cursive hand and includes various musical symbols such as clefs, time signatures, and bar lines. The lyrics are in Latin and describe the praise of God.

Laudate pue ri do mi num  
Laudate nome do mi ni      Laudate pue  
ri do mi num      Laudate nome do mi ni  
sit nome do mi ni be ne - dictio ex -  
hoc nuc et us que nuc et us que in se cu tum  
35. et super celos      glo -  
ri a e - ius  
in ce - - lo in ce - - lo et  
in terra      suscitans a terra in opem







o ro te san - - - sem fi li - o ro

te san te o - fi - li - o ro te san -

te san te te san - - - te san te

*Quasi*

lo ri a pa tri et fi - li o et spi -

ri tui

ri us

e vas in prin ci pi o et nunc et semper

et in se cu la se cu la a -

me



9.

mō a - mō a.

mō



Tenore P.<sup>o</sup> Chor



audate laudate pueri Domini laudate



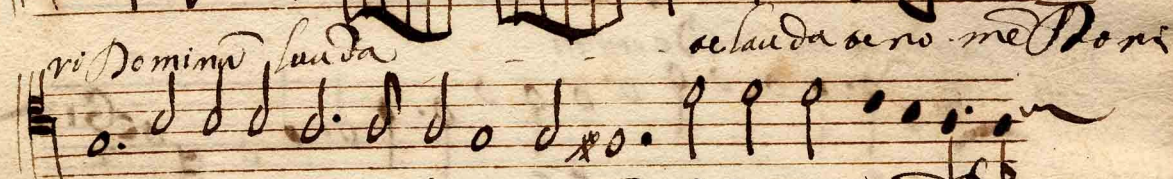
se laudate nomen Domini laudate pueri



Domini laudate nomen Domini laudate laudate pueri



se laudate nomen Domini laudate pueri



Domini laudate pueri Domini laudate nomen Domini



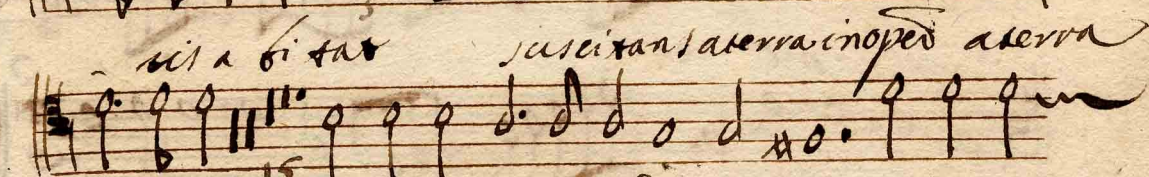
66. Quis ut dominus deus noster quis in



al-ri habitat quis in al-ri habitat



suscitans a terra inopes a terra



15 inopes laudate pueri Domini laudate

7



no mē Domini ut colles eum cū principi bus <sup>13.</sup> 7

cū principi bus popu li su - i cū principi bus

pu li su - i laudate que ri Domini *Qui habitare facit*

*Sicut* laudate nome Domini

So ni a pa tri et fi li o et spi ri ta i san cto

sicut erat in princi pio et na cte se per et in se cu la

et in se cu la se cu lo no a - - - - - mē a - - -

mē a

mē a - - - - - mē // :||



Basso C. a io

Handwritten musical score for Bass C. a io, featuring ten staves of music with Latin lyrics and various musical notations. The score is written in a historical style with a treble clef and a 3/2 time signature. The lyrics are in Latin and describe the praise of God.

1. *laudate pueri dominum laudate*

2. *no me Domini laudate pueri domini*

3. *laudate no me Domini ex cel . . . sus*

4. *super omnes gentes domini et hu mili .*

5. *as respiciat res - pi -*

6. *cit susci tam a terra in o pem a terra*

7. *in o pem laudate pu e ri Domi num laudate -*

8. *no me Domi ni cu prin ci pi bus po -*

9. *pu li popu li su . i po . . .*



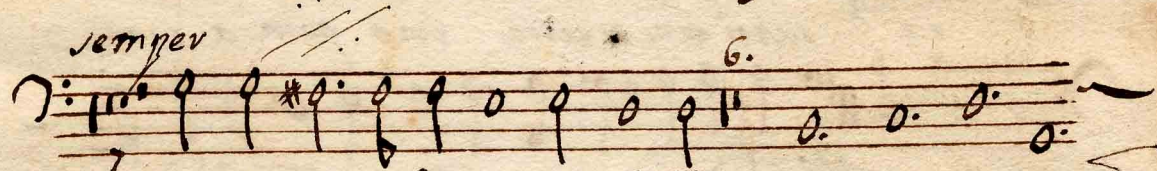


pu li su i laudate que  
ri do mi num laudate no me do mi ni

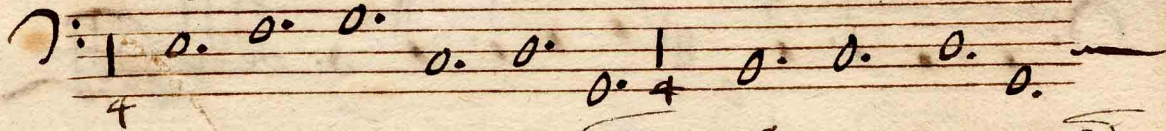
Qui tra hixare. Saeco



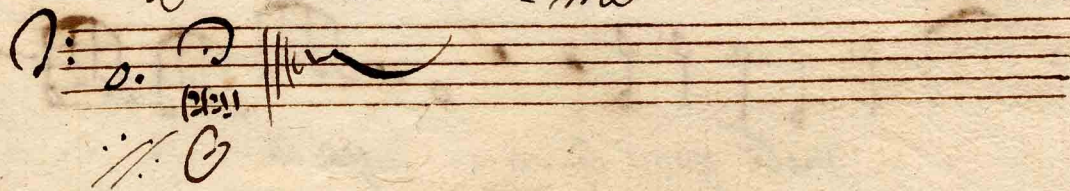
sane. to sicut erat in principio et nunc et  
semper



et in secula se cu lo rum a - - - me



mo a - - - me





Canto 2. Cho. *F*

auda se pue ri Do mi nū

27. Lau dase no mō Do mi ni Lau dase pue ri -

66. Do mi nū Lau dase no mō Do mi ni

15. 2 10 sus ci tan a terra

ino pem Lau dase pue ri Do mi nū Lau da -

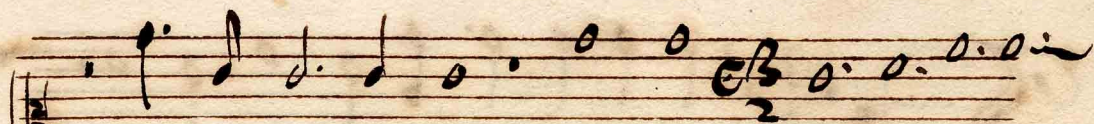
35. se no mō Do mi ni Lau dase pue ri Do mi -

mō Lau dase no mō Do mi ni

Qui habitare. Caele  
47 pause

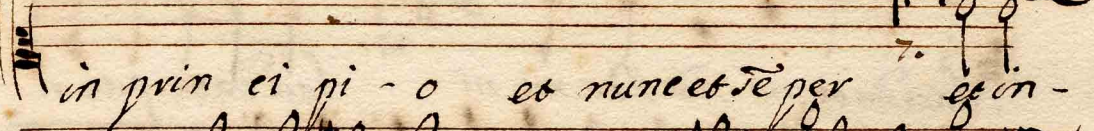
Secu  
Glo ri a pa - - tri et fi li o





et spi ri tu - i san cto si cut eras

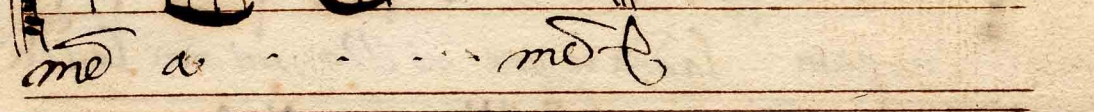
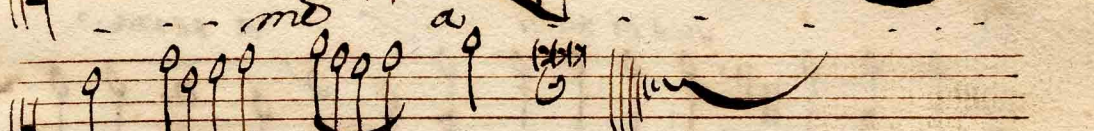
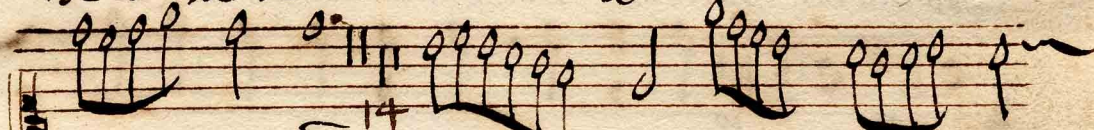
o . o . o . o . o . o . o . o .



in prin ci pi - o et nunc et se per et in -



se cu la se cu lo rō





Alto 2. a' io



au dare pu e ri Domi nū

Lau de te no mē Do mi ni

Lau da te pu e ri Do mi nū

Lau da te no mē Do mi ni

A solis ortu usque ad occa su lau-

da bi le no mē Do mi ni

sus ci tans a xer va i no pem

e de ster core e ri gens pau pe rē eri gens

pau pe rē lau da te pu e ri Do mi nū

lau dare no mē Do mi ni ut collo cet e



um cum prin ci pi bus laudare pae ri -  
 Do mi num lauda re no me Do mi ni  
 Qui habitare facis  
 47 pausa

*Tutti*

lo ri a pa tri et fi - li - o et pi -  
 ri tui sanc - - to si cus eras in prin -  
 ci pi o et nunc et semper et nunc et semper  
 et in se cu la se cu lo rum ame a - -  
 - me ame a - - me ::





Tenor 2.

quida se pu e ri Do mi nū  
 27.  
 lauda re no mē Do mi ni lauda se pu e ri  
 66  
 Do mi nū lauda re no mē Do mi ni  
 15. 10.  
 15. sacri tani a terra  
 i noxem lauda se pu e ri Do mi nū lauda  
 se no mē Do mi ni <sup>an</sup> collo cet eum cum prin-  
 cipi bus po puli sui  
 lauda re pu e ri Do mi ni lauda re no mē  
 Qui habitare sacro  
 47 pause  
 Do mi ni



*Succi*

Handwritten musical score for a piece titled "Succi". The score is written on a single page of aged, yellowed paper with a deckled edge. It consists of seven staves of music, each with a treble clef and a key signature of one sharp (F#). The lyrics are written in Latin and are placed below the corresponding musical notes. The lyrics are: "So ri a pa tri et fi li - o et spi ri tu i sanc - - - - - to si cut - e rat in prin ci pi o et nunc et sem - per et in - se cu la se cu lo rum a - - - - - mo a - - - - - mo". The music is written in a cursive style, with various note values and rests. There are some markings on the staves, such as a double bar line with repeat dots on the fourth staff and a "14" below the fifth staff. The paper shows signs of age, including foxing and a small stain near the bottom center.

So ri a pa tri et fi li - o et  
spi ri tu i sanc - - - - - to si cut -  
e rat in prin ci pi o  
et nunc et sem - per et in -  
se cu la se cu lo rum a - - - - -  
mo a - - - - - mo



Basso 2.º Cho. à 10

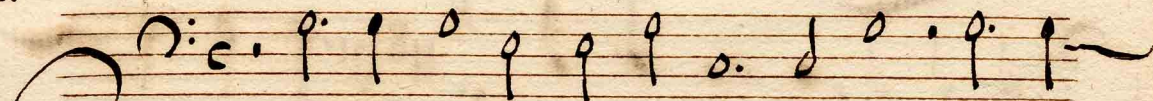
auda se pue ri Do mi nus  
 Lau da se no me Do mi ni <sup>27.</sup> Lau da se  
 pu e ri Do mi nus Lau da se no me Do mi  
 ni <sup>45.</sup> *solo* ex cel - sus su per om nes gen -  
 tes Do mi nus <sup>16.</sup> <sup>15.</sup> <sup>2-10</sup> sus ci tan t *tr.*  
 a ser va i no pem <sup>15.</sup> Lau da se pu e ri Do mi  
 nus Lau da se no me Do mi ni <sup>23</sup> ut collo ces e  
 um ad prin ci pi bus <sup>23.</sup> Lau da se pu e ri  
 Do mi nus Lau da se no me Do mi ni



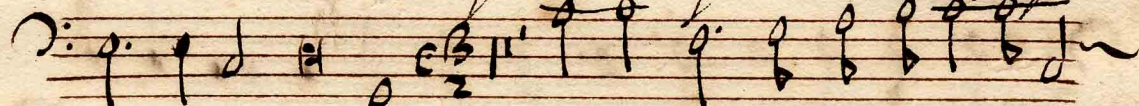
Qui habitare facis

47 pause.

*Sutti*



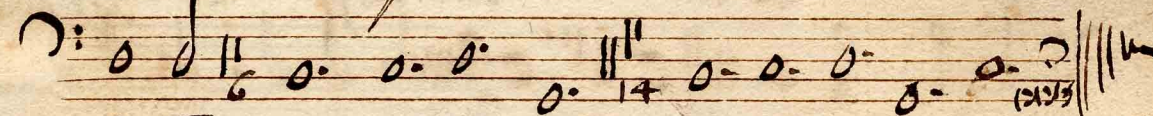
so ri a pa tri et fi - li o et spi -



ri tu i san cto sicut e ras in prin ci pio



et nūc et sem per et in - se cu la se cu -



lor d a - - - - - me a - - - - - me





Violino

+

Handwritten musical score for Violino, featuring ten staves of music. The score includes various notes, rests, and performance markings. The first staff is marked with a double bar line and the number 12. The second staff has the instruction *audate pueri* written above it. The third staff is marked with a double bar line and the number 4. The fourth staff has a double bar line and the number 9. The fifth staff has a double bar line and the number 13. The sixth staff has a double bar line and the number 16. The seventh staff has a double bar line and the number 15. The eighth staff has a double bar line and the number 9. The ninth staff has a double bar line and the number 15. The tenth staff has a double bar line and the number 9. The score is written in a cursive hand and includes various musical symbols such as clefs, notes, rests, and bar lines.



Handwritten musical notation on a single staff, featuring a treble clef, a key signature of one sharp (F#), and a common time signature (C). The notation includes various note values and rests, with a measure number '24.' written above the staff.

Handwritten musical notation on a single staff, featuring a treble clef and a common time signature (C). The notation includes various note values and rests.

Handwritten musical notation on a single staff, featuring a treble clef, a key signature of one sharp (F#), and a common time signature (C). The notation includes various note values and rests.

Handwritten musical notation on a single staff, featuring a treble clef and a common time signature (C). The notation includes various note values and rests, with a measure number '47.' written above the staff. The text 'Qui habitava in Caele' is written below the staff.

Handwritten musical notation on a single staff, featuring a treble clef and a common time signature (C). The notation includes various note values and rests. The text 'Sicut' is written to the left of the staff.

Handwritten musical notation on a single staff, featuring a treble clef and a common time signature (C). The notation includes various note values and rests, with a measure number '2' written below the staff. The text 'Gloria' is written above the staff.

Handwritten musical notation on a single staff, featuring a treble clef and a common time signature (C). The notation includes various note values and rests.

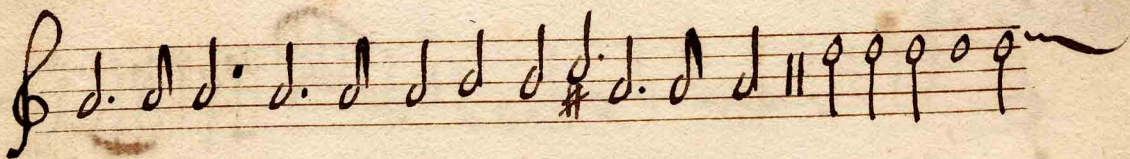
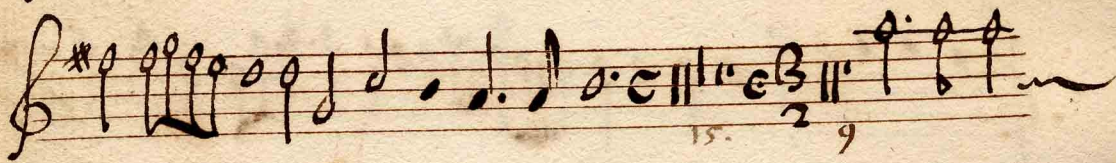
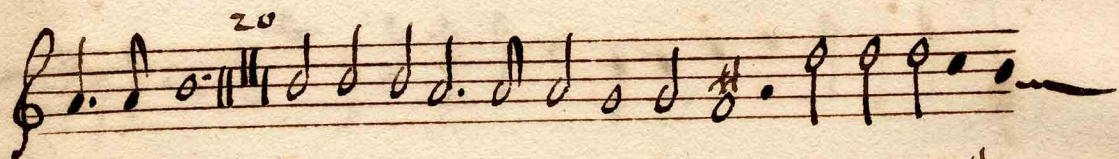
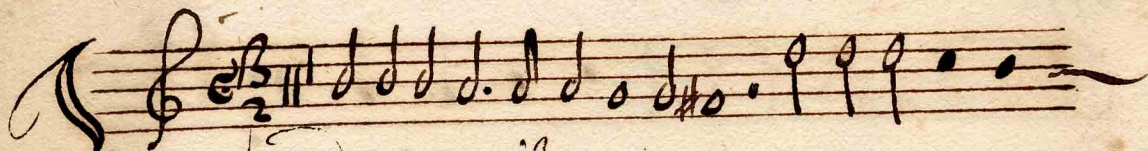
Handwritten musical notation on a single staff, featuring a treble clef and a common time signature (C). The notation includes various note values and rests, with a key signature change to one sharp (F#) indicated by a sharp sign at the end of the staff.

Handwritten musical notation on a single staff, featuring a treble clef and a common time signature (C). The notation includes various note values and rests, with a key signature change to one sharp (F#) indicated by a sharp sign at the beginning of the staff.

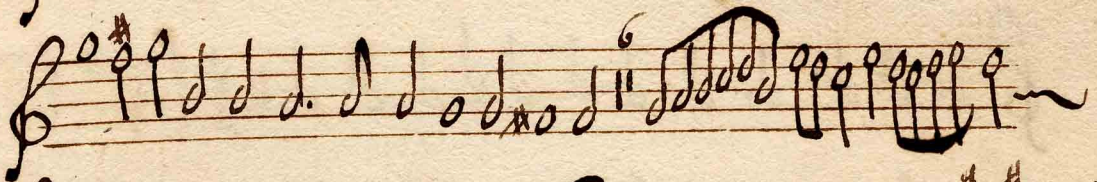
Handwritten musical notation on a single staff, featuring a treble clef and a common time signature (C). The notation includes various note values and rests.



Violino









Violone

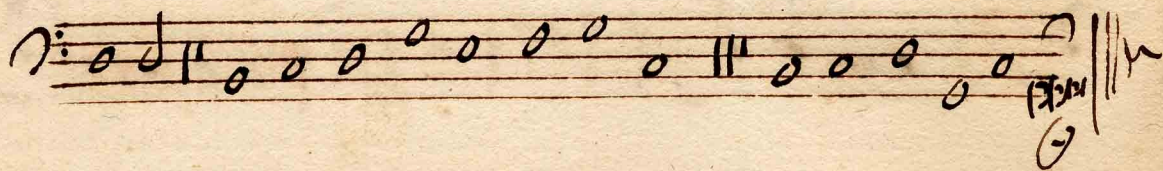
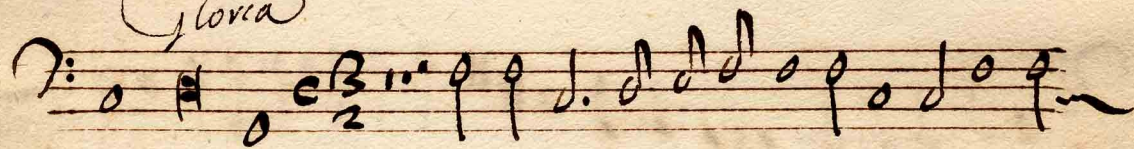
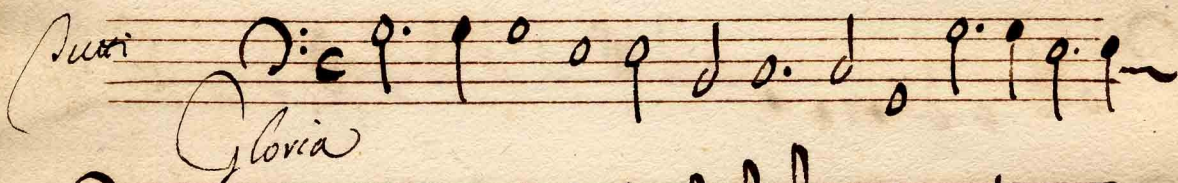
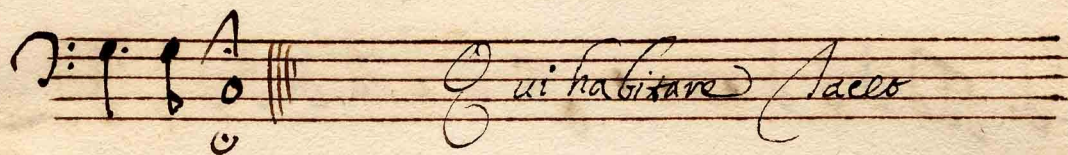
12.

audate pueri Domini

27

15





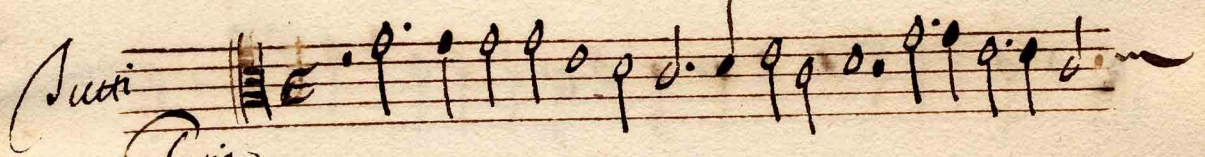
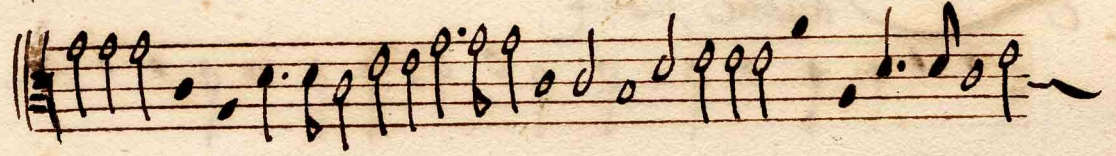


Alto Trombone. 2. Floro

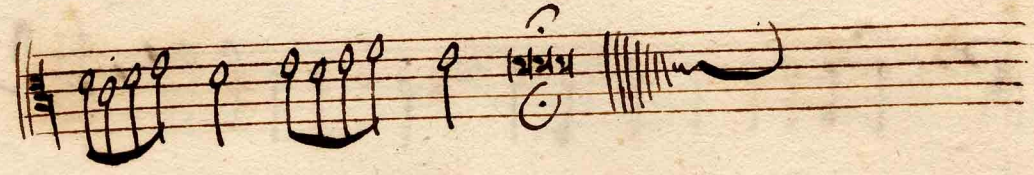
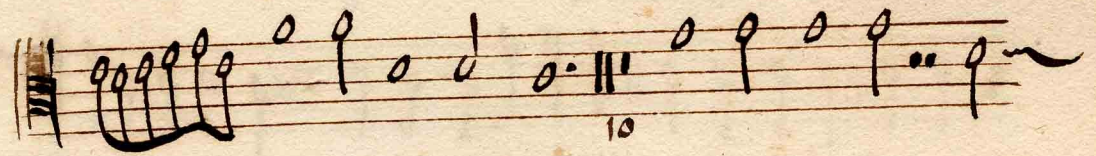
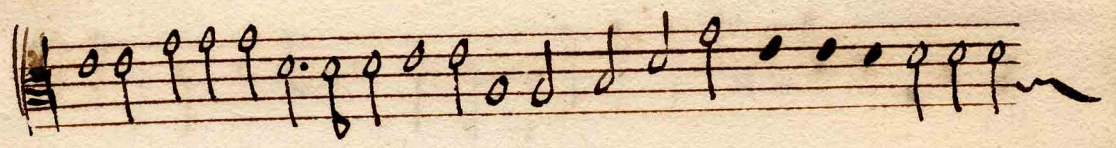
audate pueri

15. 9.





Gloria

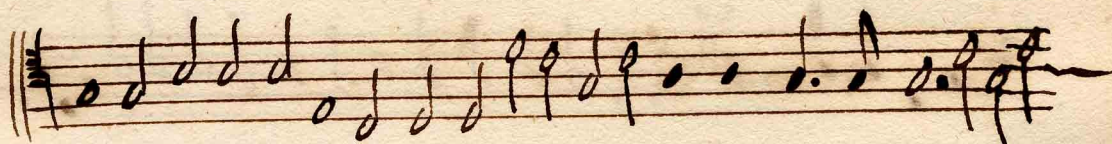
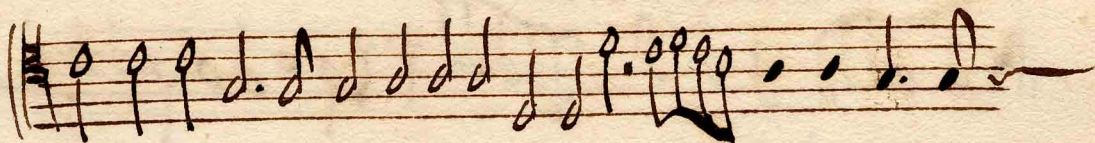




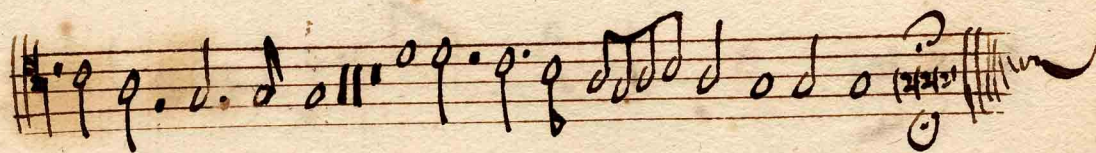
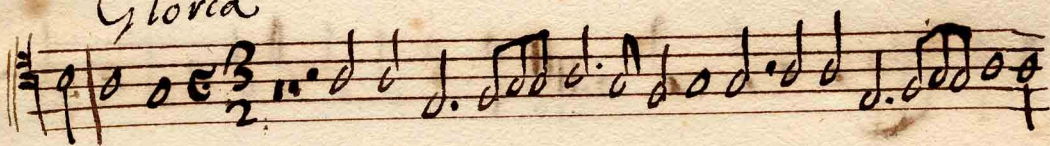
Trombone Tenore

Handwritten musical score for Trombone Tenore, consisting of ten staves. The notation includes various note values (quarter, eighth, sixteenth notes), rests, and dynamic markings. The first staff begins with a treble clef, a key signature of one sharp (F#), and a time signature of 3/2. The second staff includes the instruction *Andate pueri.* written above the notes. The score contains several repeat signs and measure numbers: 9, 13, and 15. The paper is aged and shows some staining.





*Gloria*





23.9

Organo

Laudate pueri. à 10. Di Fi. Fi.

1. P. solo  
 43 76  
 audate pueri

2. ritomo  
 43 76  
 laudate

simfo  
 43 76  
 laudate

simfo  
 43 76  
 laudate

A. 2.  
 43 76  
 A. solo.



43 *inf.* 76 B.P.<sup>o</sup> 43  
excelsus

B2. 32. 43 2.C

43 *inf.* 76 B.P.<sup>o</sup> 43  
Excelsus

43 *Att.* 76 43 B.P.<sup>o</sup>  
A.1. et humilis

2.C 43 43 *inf.*

*suavi* in celo  
A.1. 2.C

76 *suavi*

76 *inf.* 2.C. *laudare*

A.D. B. C. Tho. B.P. A.P.



Handwritten musical notation on a single staff, featuring a treble clef, a key signature of one sharp (F#), and a common time signature (C). The notation includes a series of eighth and sixteenth notes, with a fermata over the final measure. Above the staff, the word "sinf." is written, and the number "76" is written above the final measure.

Handwritten musical notation on a single staff, featuring a treble clef, a key signature of one sharp (F#), and a common time signature (C). The notation includes a series of eighth and sixteenth notes, with a fermata over the final measure. Above the staff, the word "suoni" is written, and the number "76" is written above the final measure.

Handwritten musical notation on a single staff, featuring a treble clef, a key signature of one sharp (F#), and a common time signature (C). The notation includes a series of eighth and sixteenth notes, with a fermata over the final measure. Above the staff, the word "sinf." is written, and the number "76" is written above the final measure.

Handwritten musical notation on a single staff, featuring a treble clef, a key signature of one sharp (F#), and a common time signature (C). The notation includes a series of eighth and sixteenth notes, with a fermata over the final measure. Above the staff, the number "76" is written above the final measure.

Handwritten musical notation on a single staff, featuring a treble clef, a key signature of one sharp (F#), and a common time signature (C). The notation includes a series of eighth and sixteenth notes, with a fermata over the final measure. Above the staff, the number "76" is written above the final measure.

Handwritten musical notation on a single staff, featuring a treble clef, a key signature of one sharp (F#), and a common time signature (C). The notation includes a series of eighth and sixteenth notes, with a fermata over the final measure. Above the staff, the number "43" is written above the final measure.

Handwritten musical notation on a single staff, featuring a treble clef, a key signature of one sharp (F#), and a common time signature (C). The notation includes a series of eighth and sixteenth notes, with a fermata over the final measure. Above the staff, the number "43" is written above the final measure.

Handwritten musical notation on a single staff, featuring a treble clef, a key signature of one sharp (F#), and a common time signature (C). The notation includes a series of eighth and sixteenth notes, with a fermata over the final measure. Above the staff, the word "suoni" is written, and the number "43" is written above the final measure.

Handwritten musical notation on a single staff, featuring a treble clef, a key signature of one sharp (F#), and a common time signature (C). The notation includes a series of eighth and sixteenth notes, with a fermata over the final measure. Above the staff, the word "Gloria" is written, and the number "43" is written above the final measure.



*43*  
Handwritten musical notation on a single staff, featuring a treble clef, a key signature of one sharp (F#), and a common time signature (C). The notation includes quarter and eighth notes, with a dynamic marking of *simf.* (sinfino) appearing below the staff.

Handwritten musical notation on a single staff, featuring a treble clef, a key signature of one sharp (F#), and a common time signature (C). The notation includes quarter and eighth notes, with a dynamic marking of *simf.* (sinfino) appearing below the staff and a tempo marking of *alleg.* (allegretto) appearing above the staff.

Handwritten musical notation on a single staff, featuring a treble clef, a key signature of one sharp (F#), and a common time signature (C). The notation includes quarter and eighth notes, with dynamic markings of *scriti* (scritto) and *simf.* (sinfino) appearing above the staff.

Handwritten musical notation on a single staff, featuring a treble clef, a key signature of one sharp (F#), and a common time signature (C). The notation includes quarter and eighth notes, with dynamic markings of *alleg.* (allegretto) and *alleg.* (allegretto) appearing above the staff, and a tempo marking of *alleg.* (allegretto) appearing below the staff.

Handwritten musical notation on a single staff, featuring a treble clef, a key signature of one sharp (F#), and a common time signature (C). The notation includes quarter and eighth notes, with a dynamic marking of *alleg.* (allegretto) appearing below the staff, and concludes with a double bar line and a flourish.

Five empty musical staves, each consisting of five horizontal lines, arranged vertically on the page.



~~43:14~~

23:9

Laudate pueri dominum

a

2 Cant.

4 Instr.

R



