

Sinfonia

9

All.^o non tanto

piano

piano

piano

67 98/43 65/40 *pia.*

forte

forte

forte

forte

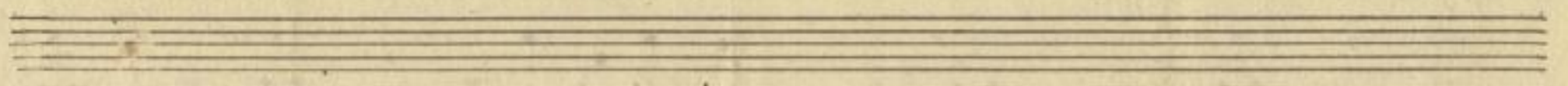
98/40 67 65 67

6x1525

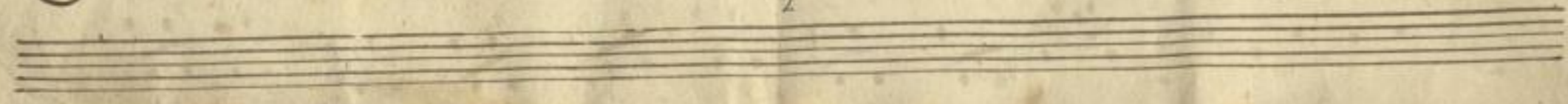
Mus. 2-N-20, 17



Handwritten musical score, first system, four staves. The notation includes treble and bass clefs, a key signature of one flat, and a 3/4 time signature. The music features complex rhythmic patterns with many sixteenth and thirty-second notes, and some slurs. A large brace on the left side groups the first three staves.



Handwritten musical score, second system, four staves. The notation continues with similar complex rhythmic patterns. A large brace on the left side groups the first three staves. There are some handwritten annotations: '51' and '49' above a measure in the bottom staff, '6' above a measure in the top staff, and '98' and '112' above a measure in the bottom staff. A small number '2' is written below the bottom staff.



Handwritten musical score, first system. It consists of four staves. The top two staves are grouped by a brace on the left and contain complex, fast-moving passages with many slurs and dynamic markings. The bottom two staves are also grouped by a brace and contain a more rhythmic, steady accompaniment. The paper is aged and yellowed.

Handwritten musical score, second system. It consists of four staves. The top two staves are grouped by a brace on the left and contain complex, fast-moving passages with many slurs and dynamic markings. The bottom two staves are also grouped by a brace and contain a more rhythmic, steady accompaniment. The paper is aged and yellowed.

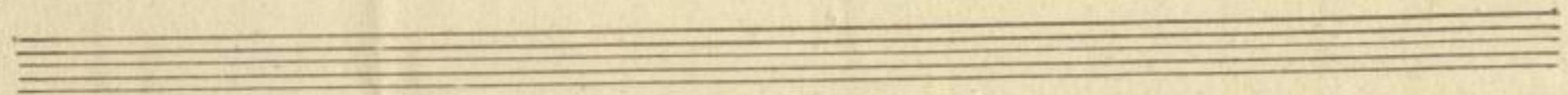
3

Forte

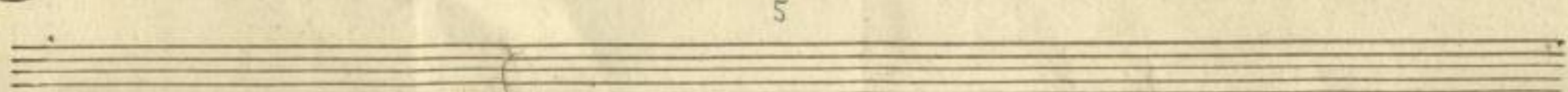
4V
51
43R

26
98
43
4

Handwritten musical score for the first system, featuring a grand staff with four staves. The top two staves are treble clef, and the bottom two are bass clef. The music includes complex rhythmic patterns and dynamic markings. The word *piano* is written above the second staff, and *forte* is written above the third staff. There are also some handwritten notes and symbols, including a *b* with an arrow pointing to the right, appearing on the third and fourth staves.



Handwritten musical score for the second system, featuring a grand staff with four staves. The top two staves are treble clef, and the bottom two are bass clef. The music includes complex rhythmic patterns and dynamic markings. The word *rit.* is written above the second staff. There are also some handwritten notes and symbols, including a *b* with an arrow pointing to the right, appearing on the third and fourth staves.



5

3

Handwritten musical score for four staves. The notation is dense, featuring complex rhythmic patterns and dynamic markings such as *pia* and *pian*. A large bracket on the left side groups the first three staves. The paper shows signs of age and wear.

Handwritten musical score for four staves. The first staff is marked *Andante e piano* and features a 2/4 time signature. The second staff begins with the word *Cristi*. The third and fourth staves continue the musical notation. A small number '6' is written below the fourth staff. The paper is aged and shows some staining.



Handwritten musical score system 1, consisting of four staves. The top staff contains a complex melodic line with many beamed notes and slurs. The second staff is mostly empty with some notes. The third and fourth staves contain accompaniment with chords and moving lines. A large curly brace on the left side groups the first three staves. The dynamic marking *pp.* is written above the second staff.



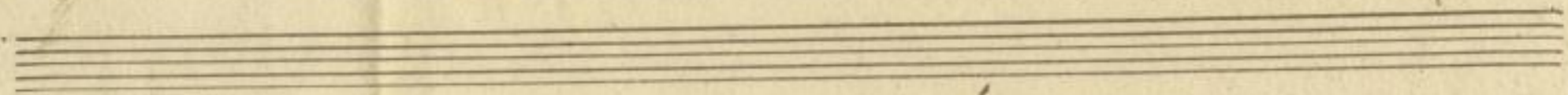
Handwritten musical score system 2, consisting of four staves. The top staff continues the complex melodic line from the first system. The second staff has some notes and a dynamic marking *mf*. The third and fourth staves continue the accompaniment. A large curly brace on the left side groups the first three staves.

Handwritten musical score for the first system. The top staff is a piano part in G major, featuring a trill on the first finger of the right hand, marked with a 'v' and 'tr'. The second staff is a violin part, also in G major, with a trill on the first finger of the right hand, marked with a 'v' and 'tr'. The music is in 2/4 time and consists of 8 measures. The piano part has a dynamic marking of 'p' and a '2.' marking above the trill. The violin part has a dynamic marking of 'p' and a '2.' marking above the trill. The system ends with a double bar line.

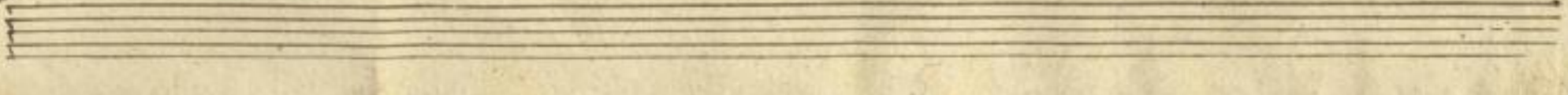
Handwritten musical score for the second system. The top staff is a piano part in G major, featuring a trill on the first finger of the right hand, marked with a 'v' and 'tr'. The second staff is a violin part, also in G major, with a trill on the first finger of the right hand, marked with a 'v' and 'tr'. The music is in 2/4 time and consists of 8 measures. The piano part has a dynamic marking of 'p' and a '2.' marking above the trill. The violin part has a dynamic marking of 'p' and a '2.' marking above the trill. The system ends with a double bar line.



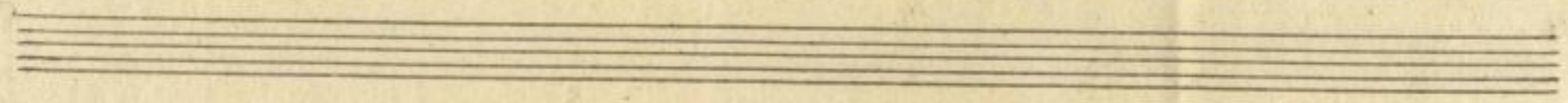
Handwritten musical score system 1, consisting of four staves. The top staff features a complex melodic line with many sixteenth notes. The second staff contains the word *Andante* written in a decorative cursive hand. The third and fourth staves provide harmonic accompaniment with chords and moving lines.



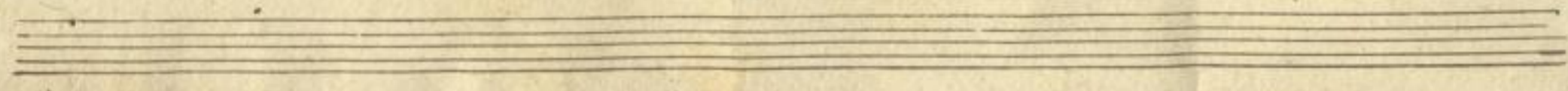
Handwritten musical score system 2, consisting of four staves. The top staff continues the complex melodic line. The second staff contains the word *Andante* written in a decorative cursive hand. The third and fourth staves provide harmonic accompaniment. A small number '9' is written below the bottom staff.

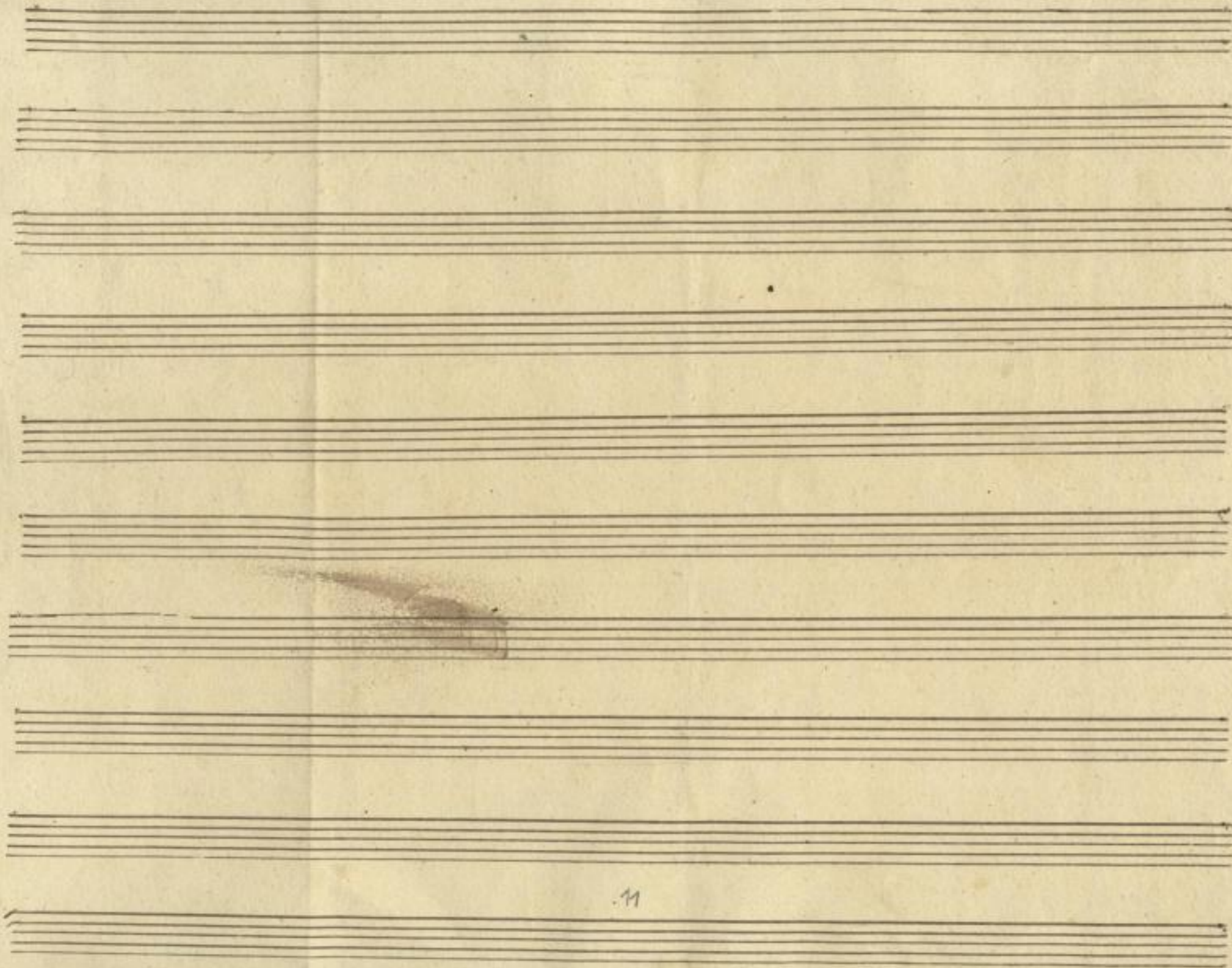


Handwritten musical score for the first system, consisting of four staves. The notation includes various note values, rests, and dynamic markings such as 'r' and 'h'.



Handwritten musical score for the second system, consisting of four staves. The second staff begins with the word "Pizz." written in cursive.





11



12