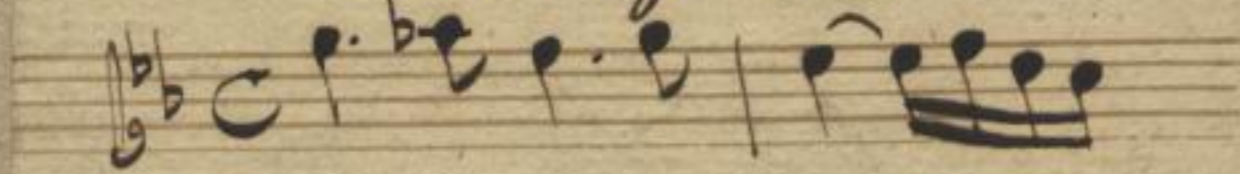


Schranck No. II.
27. Fach 51. Lage.

No. 4.) Solo.

Violino e Basso.

Del Sig. Visconti.



cm

Musica	
2822	
R	4

(Cb x)
1127

URFILM 25/19 93 NB Nr. 257 = 9 Aufn.

Sächsische Landesbibliothek in Dresden

Handschrift Nr. M³ 2822
RT4

Die Benutzung dieser Handschrift ist nur unter der Bedingung gestattet, dass der Entleiher der hiesigen Bibliothek ein Stück seiner auf die Handschrift bezüglichen Veröffentlichung geschenkweise überlässt, sofern die Bibliotheksverwaltung nicht ausdrücklich auf die Überlassung verzichtet. Zum Durchzeichnen oder zur Herstellung von Lichtbildern ist besondere Erlaubnis einzuholen.

Belehrende Auskünfte oder Hinweise auf der Bibliotheksverwaltung unbekanntere Veröffentlichungen über diese Handschrift werden dankbar entgegengenommen.

Benutzer der Handschrift seit 1950

Datum	Name, Stand und Wohnung des Benutzers	Ort der Benutzung	Art der Benutzung (nur eingesehen? ganz od. teilw. abgeschrieben? ganz od. teilw. verglichen?)	Zweck der Benutzung (Ist Veröffentlichung beabsichtigt und in welcher Form?)
-------	---------------------------------------	-------------------	---	---

Anata

Adagio.

A handwritten musical score on aged paper, consisting of ten staves. The notation is in a single system with a treble clef and a key signature of one flat (B-flat). The music is written in a cursive, historical style. The first staff begins with the word 'Anata' and a tempo marking 'Adagio.'. The score includes various rhythmic values, accidentals, and dynamic markings. The final staff concludes with the word 'Folti.' and a double bar line.

Mus. 2822-2-4



~~68 1127 (1-4.)~~

Allegro.

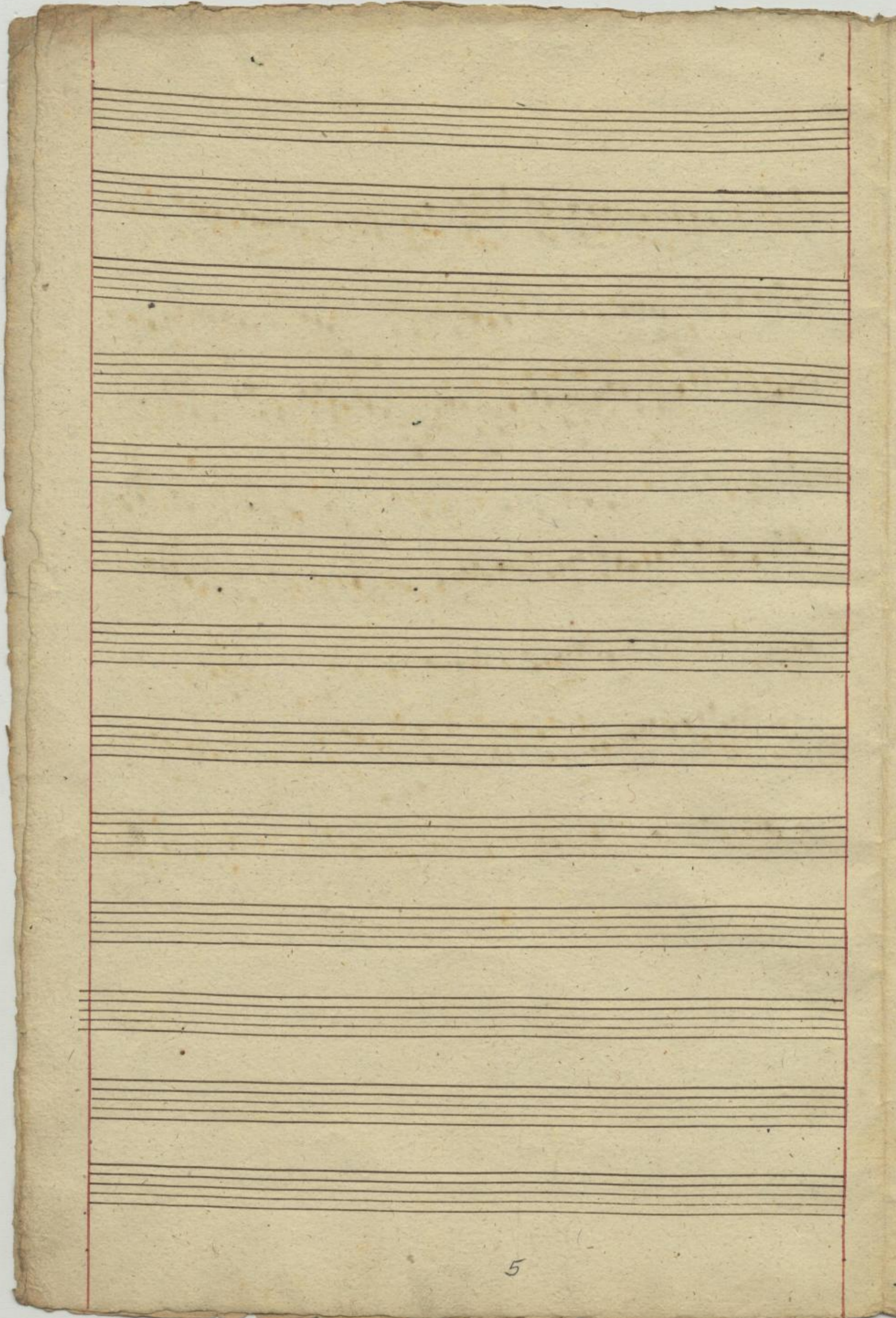
A handwritten musical score on aged, yellowed paper. The score consists of 14 staves of music, arranged in two systems of seven staves each. The notation is in a cursive, historical style, featuring various note values, rests, and clefs. The word "Allegro." is written in the upper left corner of the first staff. The paper shows signs of age, including foxing and some staining, particularly near the bottom edge.

A page of handwritten musical notation on aged, yellowed paper. The page contains ten staves of music, each beginning with a treble clef and a key signature of one flat (B-flat). The notation is dense and includes various rhythmic values, including eighth and sixteenth notes, as well as rests. The paper shows signs of age, with some staining and irregular edges. The music appears to be a single melodic line, possibly for a flute or violin.

Voeti.

~~Von 1107~~

42



5

A handwritten musical score on ten staves. The notation is in a historical style, likely from the 18th or 19th century. It features a variety of note values, including minims, crotchets, and quavers, along with rests and accidentals. The staves are connected by a brace on the left side. The paper is aged and shows some staining.

Volti.

Allegro

Handwritten musical score on aged paper, featuring 14 staves of music. The notation includes treble clefs, a key signature of one flat (B-flat), and a time signature of 8/8. The music features a variety of rhythmic patterns, including eighth and sixteenth notes, and rests. The paper shows signs of age with some staining and foxing.

2822
R 147

A handwritten musical score on aged, yellowed paper. The score consists of 12 staves of music, arranged in two systems of six staves each. The notation is in a historical style, featuring various note values, rests, and clefs. The first staff begins with a treble clef and a key signature of one flat (B-flat). The music is written in a fluid, cursive hand. There are several dynamic markings, including 'f.' (forte) and 'p.' (piano), scattered throughout the score. The paper shows signs of age, with some staining and irregular edges. The overall appearance is that of an early manuscript or a composer's draft.

Volte.

Sourée.

Handwritten musical score for a piece titled "Sourée." The score is written on aged, yellowed paper and consists of four staves. The first staff begins with a treble clef, a key signature of one flat (B-flat), and a common time signature (C). The music is written in a cursive hand. The second staff continues the melody. The third staff features a treble clef and a key signature of one flat. The fourth staff continues the melody and ends with a double bar line and a signature that appears to be "W. K."

1165
R 14
9