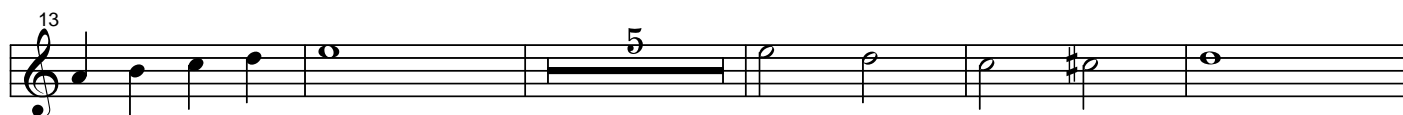


flute 2

MISERERE A 2 DESSUS 2 FLUTES

et basse cont.

M.A. Charpentier



flute 2

112

117

136

141

153

165

170

174

180

186

189

193

15

7

7

3

2

30

Detailed description: This image shows a page of musical notation for a flute part, labeled 'flute 2'. The score consists of ten staves of music, each beginning with a measure number. The first staff starts at measure 112. The second staff has a measure rest of 15 measures. The third staff starts at measure 136. The fourth staff has a measure rest of 7 measures. The fifth staff has a measure rest of 7 measures. The sixth staff starts at measure 165. The seventh staff starts at measure 170 and includes a trill. The eighth staff starts at measure 174 and includes a triplet. The ninth staff starts at measure 180 and includes a doublet. The tenth staff starts at measure 186 and includes a trill. The final staff starts at measure 193 and includes a measure rest of 30 measures. The key signature is one sharp (F#) and the time signature is common time (C).

flute 2

227

233

239

245

252

257

271

281

286

291

324

329

flute 2

335

341

347

13

364

369

12

2

386

392

397

403

408

414

420

flute 2

Musical score for flute 2, measures 426-538. The score is written in treble clef with a key signature of one sharp (F#). The music consists of ten staves of notation. Measure 426 begins with a first ending bracket over measures 426-427, with a second ending bracket over measures 428-429. Measure 432 contains a fermata over a quarter note. Measure 438 contains a fermata over a quarter note. Measure 444 contains a fermata over a quarter note. Measure 450 contains a fermata over a quarter note. Measure 473 contains a fermata over a quarter note. Measure 479 contains a fermata over a quarter note. Measure 488 contains a fermata over a quarter note. Measure 496 contains a fermata over a quarter note. Measure 502 contains a fermata over a quarter note. Measure 508 contains a fermata over a quarter note. Measure 538 contains a fermata over a quarter note.

flute 2

543

549

555

doux

561

5 21

590

595

9

608

7

619

624

629

14

648

5

658

5

flute 2

