

Piccolo

# The Maniac Chase

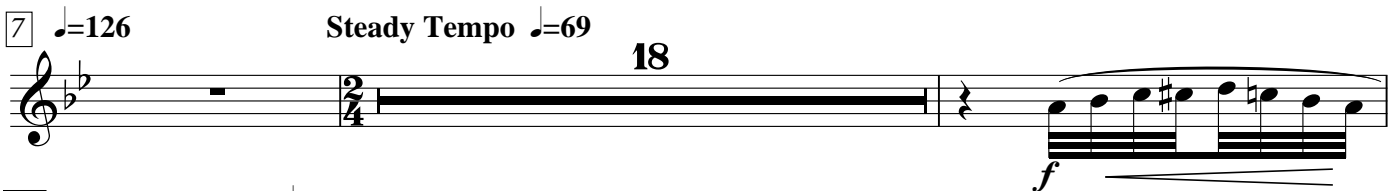
1904 Thomas Edison Silent Classic

Daniel Léo Simpson  
May 2010  
San Carlos, California

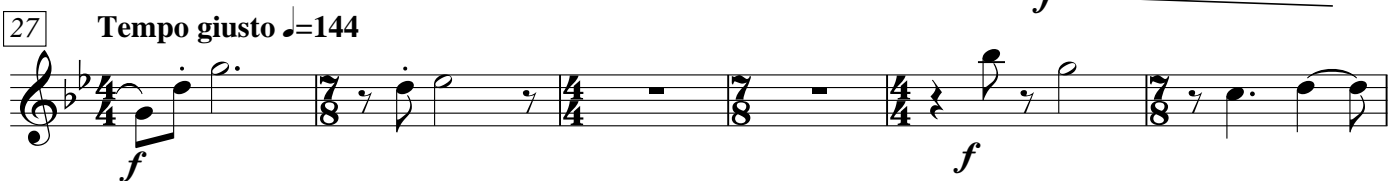
♩=104      ♩=210      ♩=155      ♩=144      2



7 ♩=126      Steady Tempo ♩=69      18



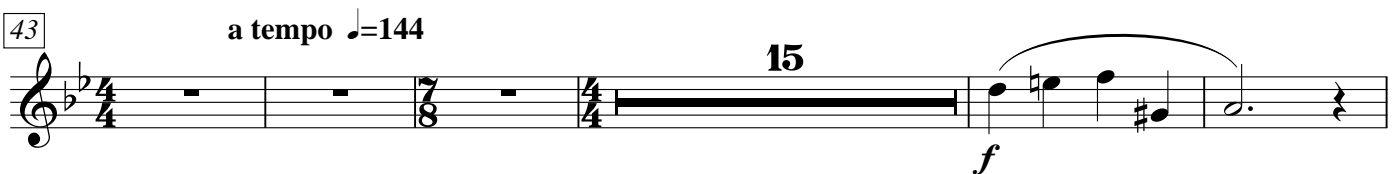
27 Tempo giusto ♩=144



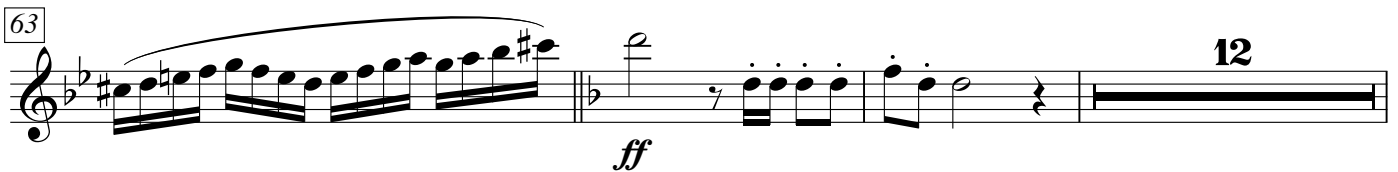
33




43 a tempo ♩=144      15




63



78 molto rit. Tempo giusto ♩=155      4



86



96 *mf* **2** *mf*

102

106 **Tempo giusto** ♩=155

111 *f*

115

119 **(lo stesso tempo)** **lo stesso tempo** **3** **13** **3** *mf*

140 *f* **poco rit.** **a tempo** ♩=155 **4** **tr** **tr** *sfz*

148 *ff* *f* **3** **poco rit.**

157 **Meno mosso** ♩=126 **5**

162 **Allegro** ♩=155 **11** **8** **4** *f*

187 **2** **9**

*f* *ff*

202

*mf*

207

*f*

214 **2**

*f*

221 **3** **6**

*f*

233 **4**

*f*

240 **12**

*f*

255 **lo stesso tempo** **2** **2**

*cresc.*

Piccolo

259

266

273

278

284

288

297

a Tempo ♩=155

303

322

a tempo ♩=90

Flute 1

# The Maniac Chase

1904 Thomas Edison Silent Classic

Daniel Léo Simpson  
May 2010  
San Carlos, California

Musical score for Flute 1, titled "The Maniac Chase" (1904 Thomas Edison Silent Classic). The score is in G minor (one flat) and consists of six systems of music.

- System 1:** Starts with a treble clef and a key signature of one flat. It features four measures of rests with tempo markings: ♩=104, ♩=210, ♩=155, and ♩=144. The final measure has a dynamic marking of *fp*.
- System 2:** Begins at measure 7. It includes a dynamic marking of *ff*, a tempo marking of ♩=126, and the instruction "Steady Tempo". A measure rest is marked with the number 18. The system ends with a dynamic marking of *f*.
- System 3:** Begins at measure 27. It includes the instruction "Tempo giusto" and a tempo marking of ♩=144. The system ends with a dynamic marking of *f*.
- System 4:** Begins at measure 33. It features a triplet of eighth notes, a 3/4 time signature, and a measure rest marked with the number 3. The system ends with the instruction "rit. .".
- System 5:** Begins at measure 40. It includes the instruction "Resume previous Tempo" and a tempo marking of ♩=144. It features a triplet of eighth notes and a dynamic marking of *mp*.
- System 6:** Begins at measure 48. It features a measure rest marked with the number 4, followed by eighth notes, and ends with a dynamic marking of *f*.

58 *mf*

63 *ff*

68 *f* *mf* *mf*

Tempo giusto ♩=155

78 *f*

molto rit.

85 *f*

91 *mf*

100

105 *f*

Tempo giusto ♩=155

109

Flute 1

114

119 (lo stesso tempo) lo stesso tempo

3 4 6

*mf*

135

*mf* poco rit. . . a tempo ♩=155

2

140

*f* 4 *sfz* *tr* *tr* *ff*

149

*f* *mf* 2 poco rit. .

157 . Meno mosso ♩=126 solo

2 11

*mf* 3

173

2 2 *pp* *mf*

181 Allegro ♩=155

7 *f* *ff*

191

13

Flute 1

206 *f* *f*

213 *f*

218

223 6 *f*

233 4 *f* *f*

240 a2 *f* *f*

246 2 3 2 *mf* *mp*

255 lo stesso tempo *mf* 3 *cresc. mf* 3 *mf* 3

261 3 *mf* *f* 3

268 3 3



275

280

286

289

297

Resume previous Tempo ♩=155

303

309

324

♩=90



61 *f*

64 *ff* 12 2 *molto rit..*

Tempo giusto ♩=155

80 *f* 3 3

87 *f*

92 11 *mf*

Tempo giusto ♩=155

105 *f*

109

114

Flute 2

119 (lo stesso tempo)

lo stesso tempo

3 17 *f*

poco rit. . . . a tempo ♩=155

141 4 *sfz* *tr* *tr* *ff* 7

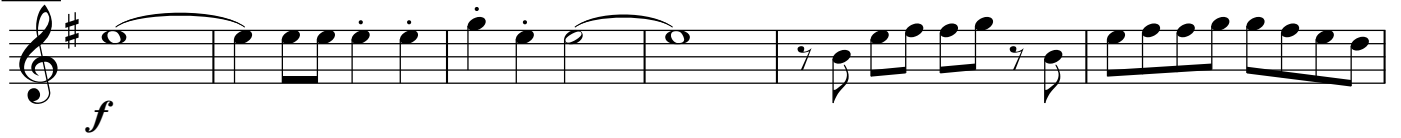
150 *f* *mf* 2 poco rit. .

157 . Meno mosso ♩=126 16 2 4 *pp*

181 Allegro ♩=155 8 *f* *ff*

191 15

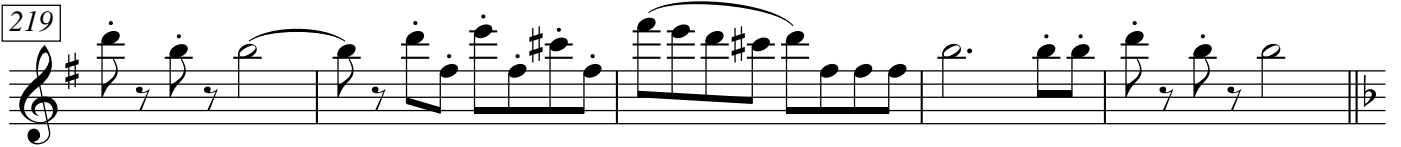
208



214



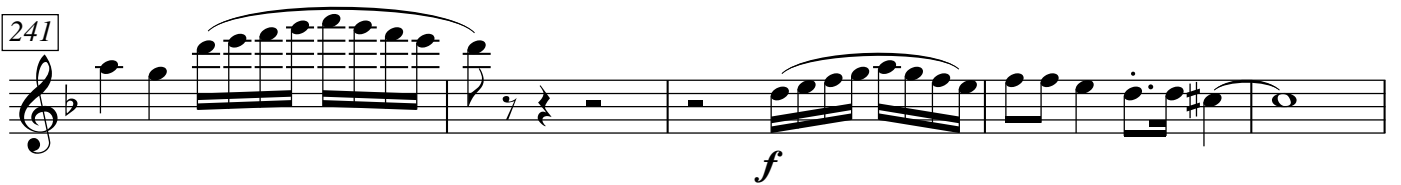
219



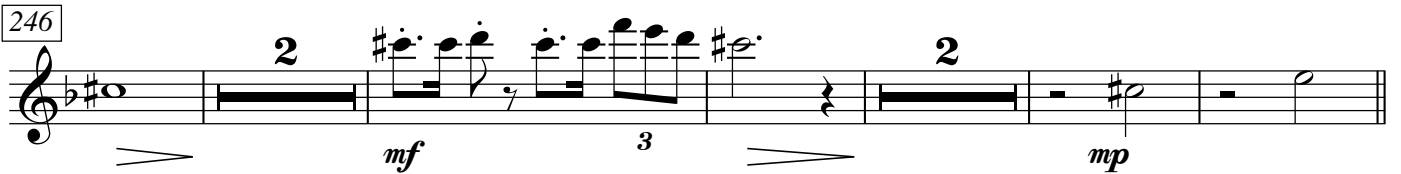
224



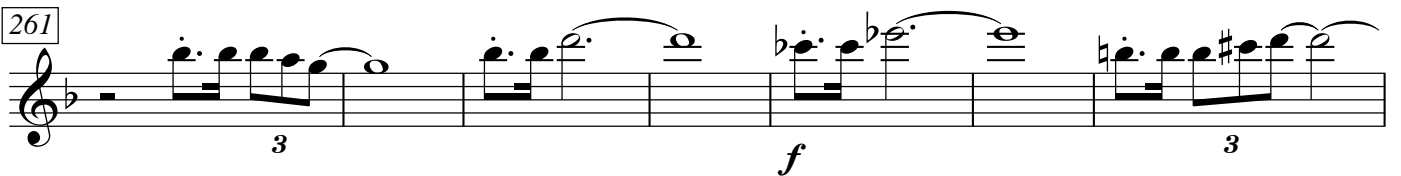
241



246

255 **lo stesso tempo**

261



268



274

3 3

278

3 3

283

*f*

288

4 2 rit.

297

Resume previous Tempo ♩=155

*f*

303

*ff* 2 *f* 3

308

9 5 rit.

324

♩=90

*f* *f* *ff*