

Alto
Tenor

Dark Night Of The Soul

Daniel Léo Simpson
December 1975
Sierra Vista, Arizona

Moderato ♩=104

4

1st verse

4

8

The first system consists of two staves. The top staff is a piano introduction with a 4-measure rest. The bottom staff begins the vocal line with a 4-measure rest, followed by the lyrics 'Shin - ing star_ close to being born here I stand at the'.

Shin - ing star_ close to being born here I stand at the

11

8

The second system continues the vocal line with the lyrics 'edge of the storm like a bride to be_ I a -'.

edge of the storm like a bride to be_ I a -

18

8

2

The third system continues the vocal line with the lyrics 'wait for_ Thee_ Thee_'. It ends with a 2-measure rest.

wait for_ Thee_ Thee_

25 2nd verse

8

The second system of the second verse begins with a 4-measure rest, followed by the lyrics 'Sav - ior come bring forth your peace lead me to_ your glo - ri - ous'.

Sav - ior come bring forth your peace lead me to_ your glo - ri - ous

32

8

The third system continues the vocal line with the lyrics 'feast where the spouse and lamb_ take each'.

feast where the spouse and lamb_ take each

38

8

2

The fourth system continues the vocal line with the lyrics 'oth - er's_ hand_ hand_'. It ends with a 2-measure rest.

oth - er's_ hand_ hand_

45 **3rd verse**

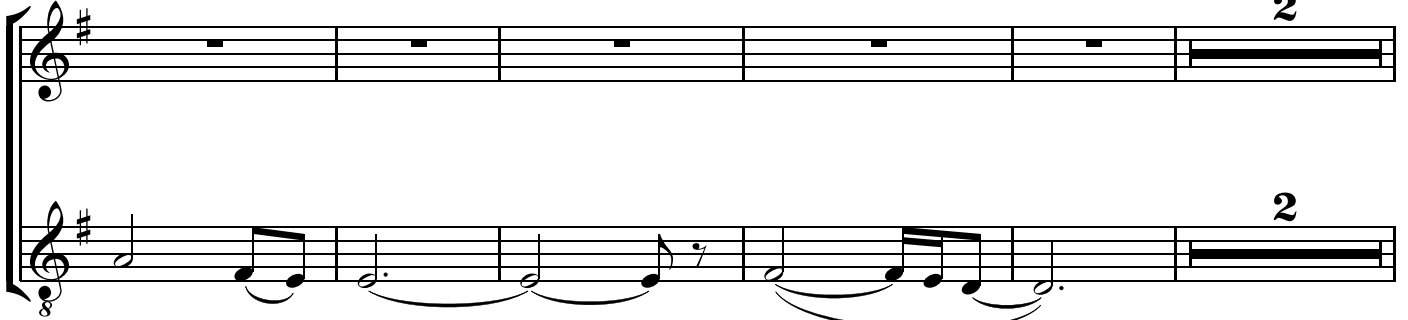
Word of God_____ make your-self known har - vest now_ the seed I have

52



sown I de - sire one thing_____ be my

58



Lord and_ King_____ King_____

65 **4th verse**

Flame of Truth_____ Hom-age to Thee Bless this night_ giv-en to



Flame of Truth_____ Hom-age to Thee Bless this night_ giv-en to

72

me I will write the songs_____ You will lead me_
me I will write the songs_____ You will lead me_

Detailed description: This block contains two systems of musical notation for measures 72 through 78. Each system consists of a vocal line (treble clef) and a piano accompaniment line (treble clef with an 8). The key signature is one sharp (F#). The lyrics are: "me I will write the songs_____ You will lead me_". The piano accompaniment features a steady eighth-note bass line and chords in the right hand.

79

rall. **rit.**

on_____ on_____ Ooh_____
on_____ on_____ Ooh_____

Detailed description: This block contains two systems of musical notation for measures 79 through 85. Each system consists of a vocal line (treble clef) and a piano accompaniment line (treble clef with an 8). The key signature is one sharp (F#). The lyrics are: "on_____ on_____ Ooh_____". Above the first system, there are performance markings: "rall." followed by a dotted line and "rit." followed by a dotted line. The piano accompaniment features a steady eighth-note bass line and chords in the right hand.