

GAVOTTE in D MAJOR

(from: 3 Pieces for Violin & Piano in F major)

for Trumpet & Organ

Score (02':40")

William Boyce (1710 - 1779)

Arr. Michel Rondeau

Allegro $\text{♩} = 75$

Trumpet in C

Organ

C Tpt.

Org.

C Tpt.

Org.

C Tpt.

Org.

GAVOTTE in D MAJOR - Boyce - Score

19

C Tpt.

Org.

Detailed description: This system covers measures 19 to 23. The C Tpt. part begins with a melodic line in D major, featuring eighth and sixteenth notes. The Organ part provides accompaniment with chords in the right hand and a bass line in the left hand. Measure 23 contains a whole rest for the C Tpt. part.

24

C Tpt.

Org.

Detailed description: This system covers measures 24 to 27. The C Tpt. part has a melodic line with eighth notes. The Organ part continues with accompaniment. Measure 27 ends with a whole rest for the C Tpt. part.

28

C Tpt.

Org.

Detailed description: This system covers measures 28 to 32. The C Tpt. part has whole rests for measures 28, 29, 30, and 31, followed by a melodic line in measure 32. The Organ part provides accompaniment throughout.

33

C Tpt.

Org.

Detailed description: This system covers measures 33 to 36. The C Tpt. part has whole rests for measures 33, 34, and 35, followed by a melodic line in measure 36. The Organ part provides accompaniment throughout.

GAVOTTE in D MAJOR - Boyce - Score

37

C Tpt.

Org.

Detailed description: This system covers measures 37 to 40. The C Tpt. part begins with a quarter rest, followed by a melodic line of eighth and quarter notes. The Organ part features a treble clef with a melody of eighth and quarter notes, and a bass clef with a simple accompaniment of quarter notes. The key signature is D major (two sharps).

41

C Tpt.

Org.

Detailed description: This system covers measures 41 to 44. The C Tpt. part has a continuous eighth-note melody. The Organ part continues with a similar eighth-note melody in the treble and a steady quarter-note accompaniment in the bass. The key signature remains D major.

45

C Tpt.

Org.

Detailed description: This system covers measures 45 to 48. The C Tpt. part has a quarter rest in measure 45, followed by a melodic line with a trill-like flourish at the end of measure 48. The Organ part features a treble clef with a melody of eighth and quarter notes, and a bass clef with a simple accompaniment. The piece concludes with a double bar line and repeat dots. The key signature is D major.

GAVOTTE in D MAJOR

(from: 3 Pieces for Violin & Piano in F major)

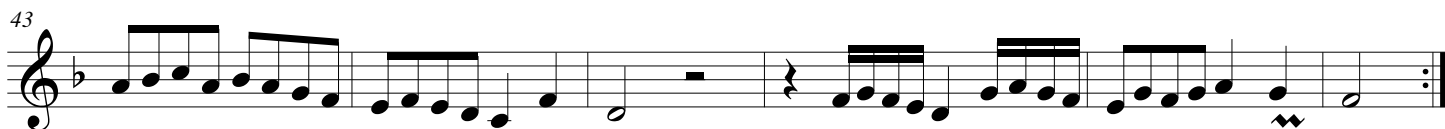
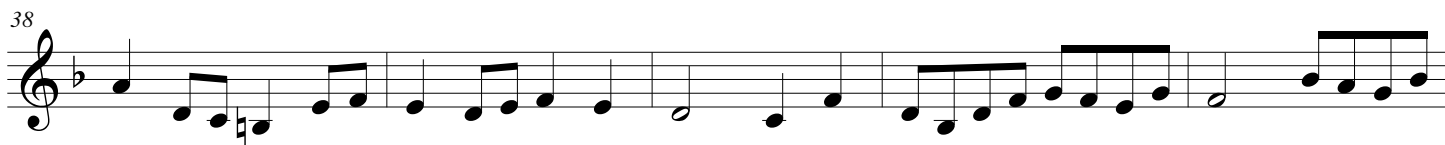
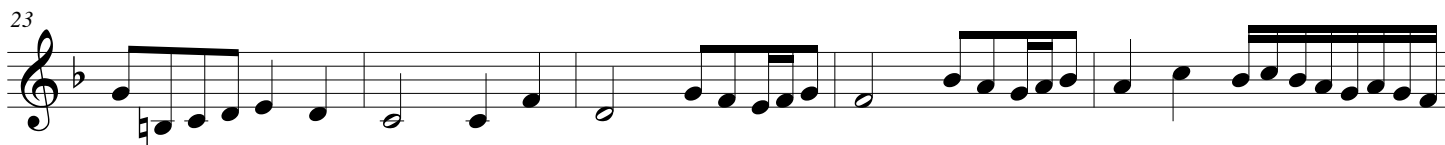
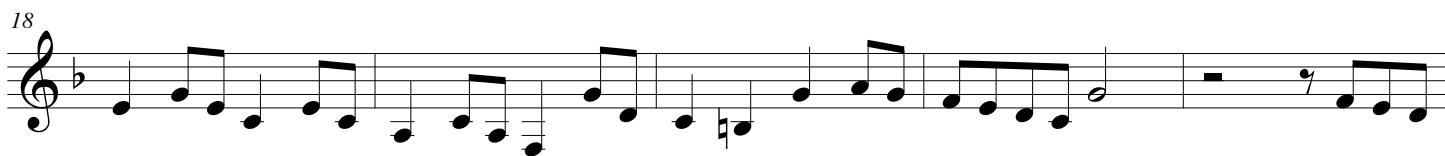
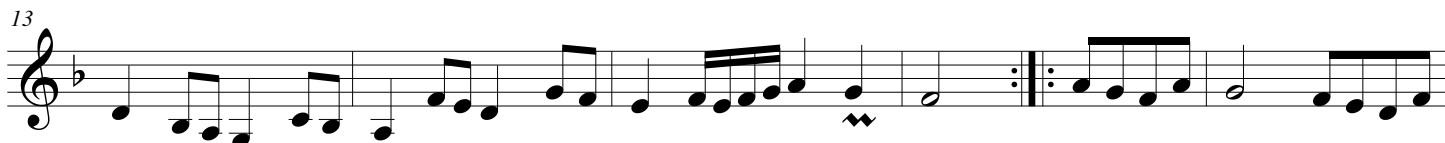
for Trumpet & Organ

Trumpet in A

William Boyce (1710 - 1779)

Arr. Michel Rondeau

Allegro $\text{♩} = 75$



GAVOTTE in D MAJOR

(from: 3 Pieces for Violin & Piano in F major)

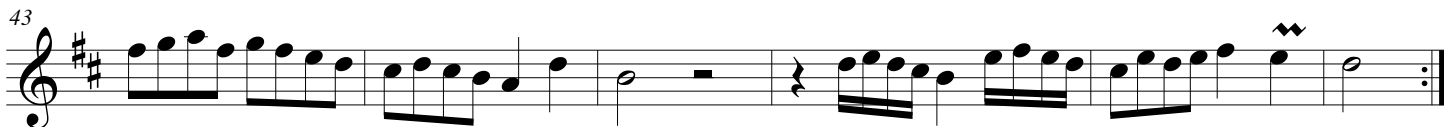
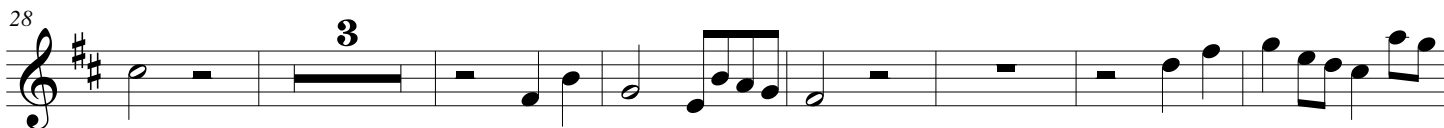
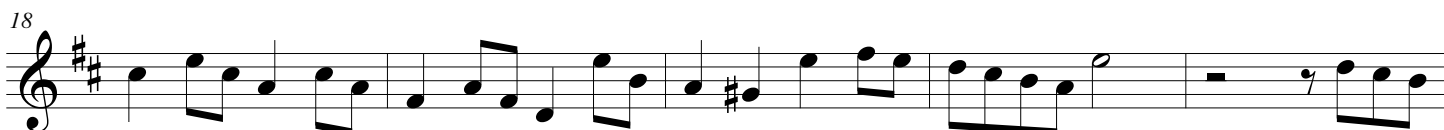
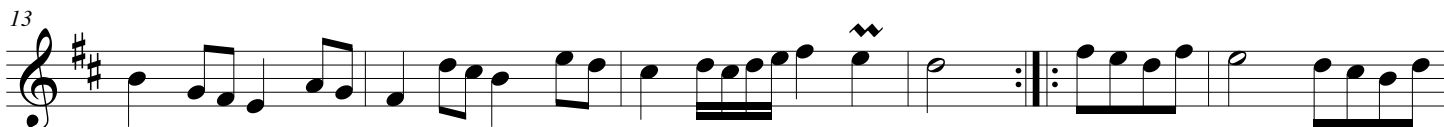
for Trumpet & Organ

Trumpet in C

William Boyce (1710 - 1779)

Arr. Michel Rondeau

Allegro $\text{♩} = 75$



GAVOTTE in D MAJOR

(from: 3 Pieces for Violin & Piano in F major)

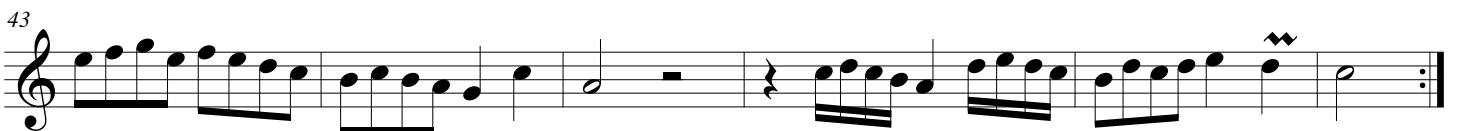
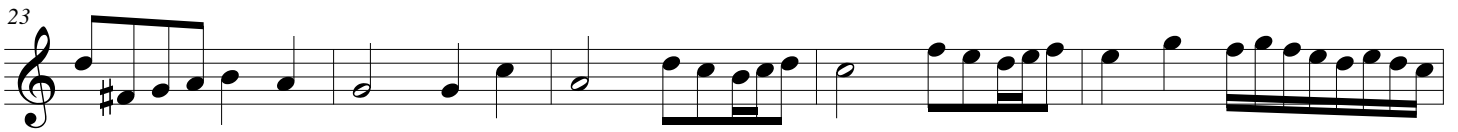
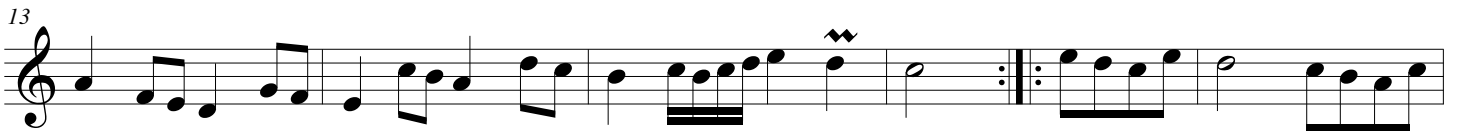
for Trumpet & Organ

Trumpet in D

William Boyce (1710 - 1779)

Arr. Michel Rondeau

Allegro $\text{♩} = 75$



GAVOTTE in D MAJOR

(from: 3 Pieces for Violin & Piano in F major)

for Trumpet & Organ

Organ

William Boyce (1710 - 1779)

Arr. Michel Rondeau

Trumpet in C

Allegro $\text{♩} = 75$

Organ

C Tpt.

Org.

C Tpt.


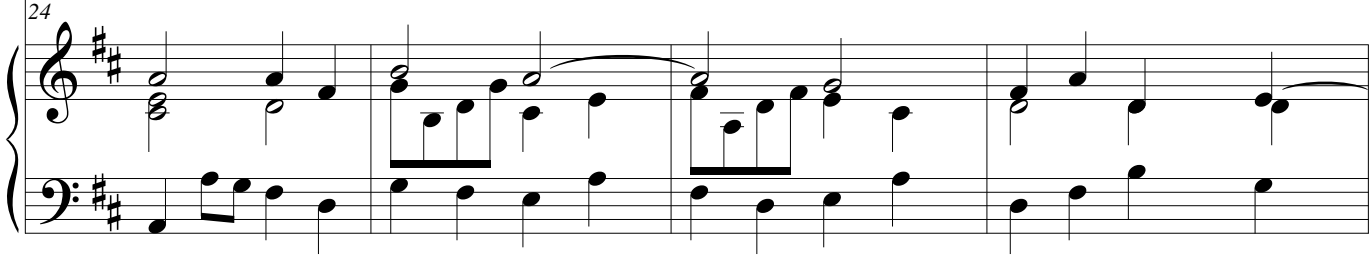
Org.

C Tpt.

Org.

GAVOTTE in D MAJOR - Boyce - Organ

C Tpt.  

C Tpt.  

C Tpt.  

C Tpt.  

GAVOTTE in D MAJOR - Boyce - Organ

C Tpt. ³⁷

Org. ³⁷

This system contains measures 37 through 40. The C Tpt. part begins with a quarter rest, followed by a melodic line of eighth and quarter notes. The Organ part features a treble and bass staff. The treble staff has a melodic line with eighth and quarter notes, while the bass staff provides a simple harmonic accompaniment with quarter notes.

C Tpt. ⁴¹

Org. ⁴¹

This system contains measures 41 through 44. The C Tpt. part has a continuous melodic line of eighth notes. The Organ part continues with a similar melodic line in the treble and a steady accompaniment in the bass.

C Tpt. ⁴⁵

Org. ⁴⁵

This system contains measures 45 through 48, which conclude the piece. The C Tpt. part has a quarter rest in measure 45, followed by a melodic line that ends with a fermata. The Organ part features a treble staff with a melodic line and a bass staff with a simple accompaniment, both ending with a fermata.