

Ave Maria Stella del Cielo. Barbieri.

Basso Soprano:

*Largo.* Ave maria

Stella Dei mater alma

Celi portas felix

*Esatto voce*  
 Celi felix Celi

por = = ta sumens

illud ave Sabot = =

elij Sabot = elij ore

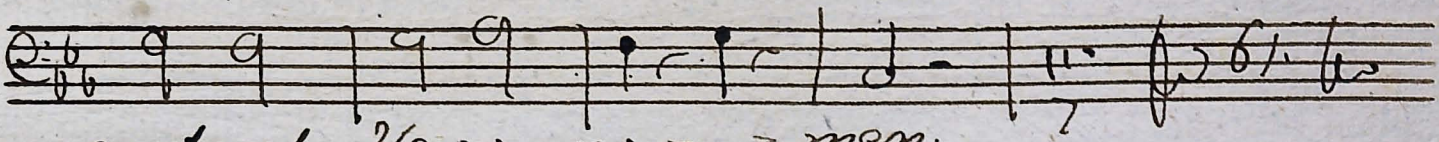
funda nos in

*pa = ce* mutans Hecce

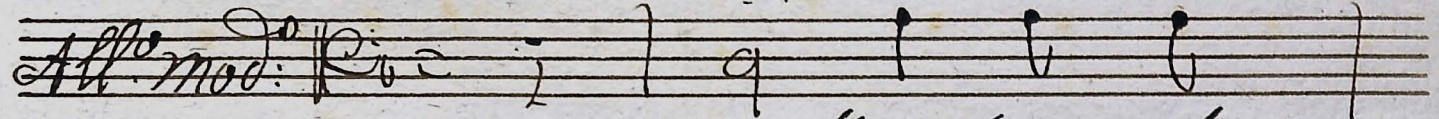
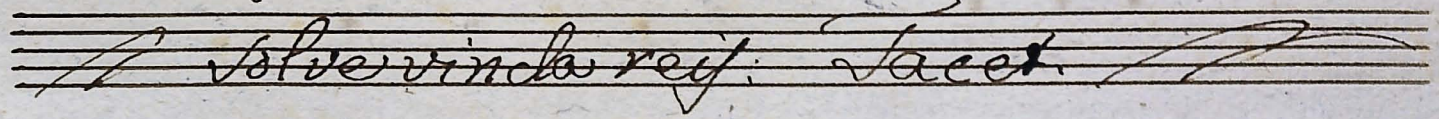
no = = = men

9/7

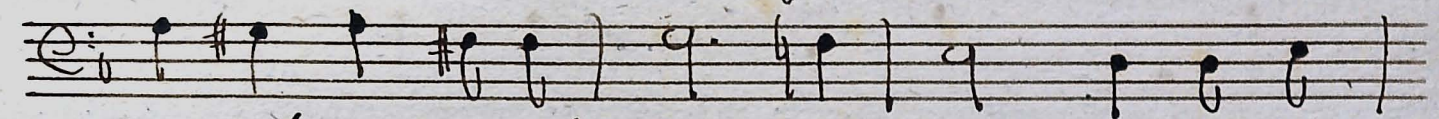




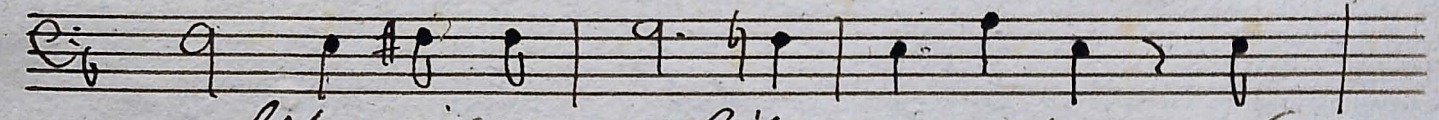
mutans Heros no = = men.



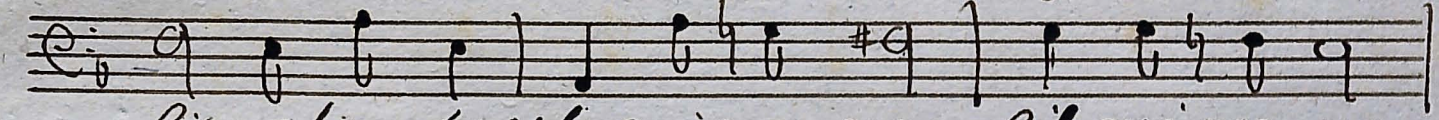
monstra se ef = =



ve matrem sumat per se preces qui pro



nobis qui pro nobis na = tus fu = =



lit esse tuus qui pro no = bis qui pro no =



bis qui pro nobis na = = = =



tus tulit esse tuus qui pro



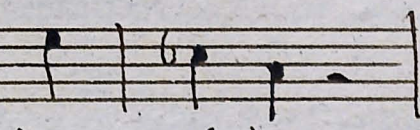
nobis na = tus tulit esse esse



tu = us.




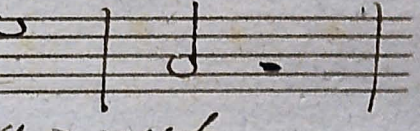
# Virgo singularis: Tacet.

*Andante* | *E: b* = 5 |  | 6 | 



Virgini Deo patri

*E: b* |  | 6 | 



Summo Christo deus Spiritui

*E: b* |  | 6 | 

Sancto tribus honor a = nus

*E: b* |  | 6 | 

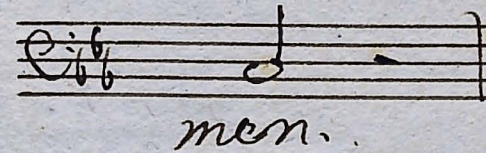
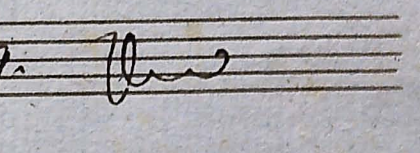
amen amen amen

*E: b* |  | 6 | 

amen a = men amen a =

*E: b* |  | 6 | 

= = = men a = men a = =

*E: b* |  | 6 | 

men. 5. 29. 29.

Virgini Deo.