

Bass

REJOICE IN THE LORD

for CHOIR (S.A.T.B.), FLUTE, PIANO, BASS

From
PSALM 33

& LATIN RHYTHM PERCUSSION

Music by
LEE EITZEN
(1920-1981)

Maestoso ad lib



⑧ ♩ = 100

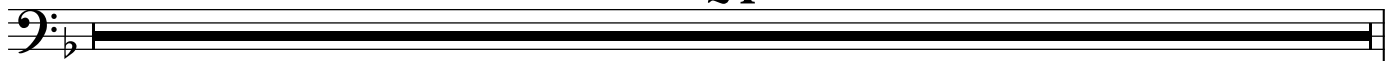


⑬

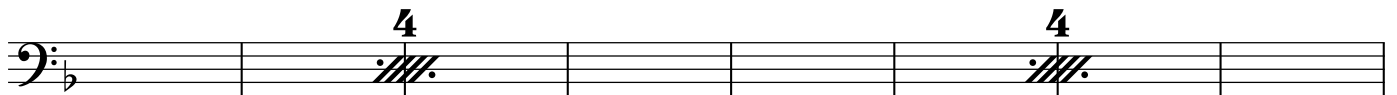


⑳

24



㉔



㉙

Bar.



mf Play

skill - ful-ly

Copyright © 2012 This work is licensed under the

Creative Commons Attribution-ShareAlike 3.0 Unported License.

prepared by **bottomless cup** music, New York, NY www.bottomlesscupmusic.com

REJOICE IN THE LORD

Musical staff with bass clef, key signature of one flat, and a measure rest. A double bar line is followed by a measure with a fermata and a '4' above it, indicating a four-measure rest.

Musical staff with bass clef, key signature of one flat, and a measure rest. A double bar line is followed by a measure with a fermata and a '4' above it, indicating a four-measure rest. The staff continues with notes and rests.

88

Musical staff with bass clef, key signature of one flat, and notes with rests. A double bar line is followed by a measure with a fermata and a '2' above it, indicating a two-measure rest.

Musical staff with bass clef, key signature of one flat, and notes with rests. A double bar line is followed by a measure with a fermata and a '2' above it, indicating a two-measure rest. The staff ends with a 3/2 time signature.

96 $d = d$

Musical staff with bass clef, 3/2 time signature, and a long horizontal line representing a 14-measure rest.

110

9

119

7

126

5

Musical staff with bass clef and a long horizontal line representing a 9-measure rest, followed by a 7-measure rest, and a 5-measure rest.

131

6

137

3

140

$d = d$

7

Musical staff with bass clef, key signature of one flat, and a long horizontal line representing a 6-measure rest, followed by a 3-measure rest, and a 7-measure rest. The staff ends with a double bar line and a key signature change to one flat.

147

Musical staff with bass clef, key signature of one flat, and notes with rests.

4

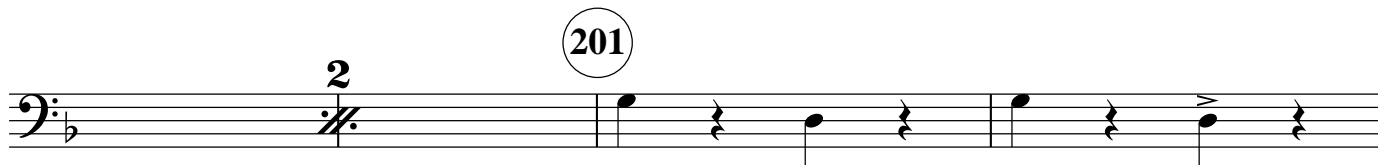
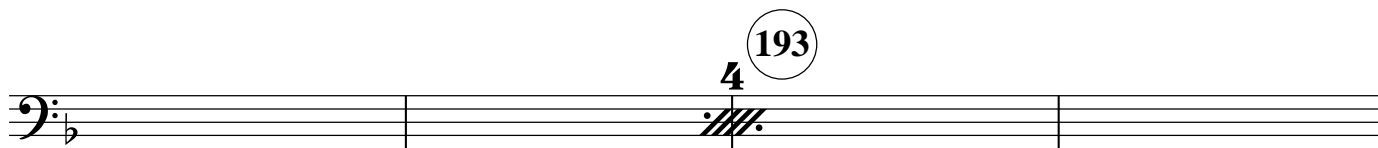
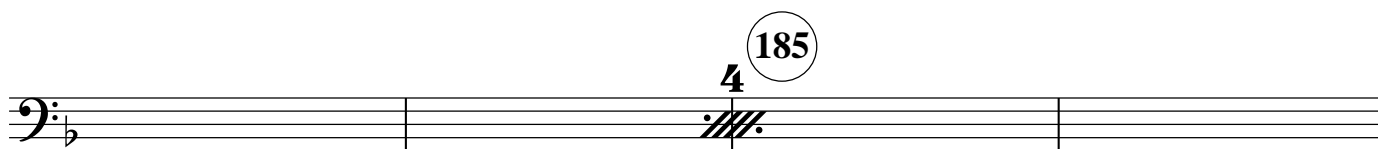
4

Musical staff with bass clef, key signature of one flat, and two measures with a fermata and a '4' above it, indicating four-measure rests.

163

4

Musical staff with bass clef, key signature of one flat, and a measure with a fermata and a '4' above it, indicating a four-measure rest. The staff continues with notes and rests.



REJOICE IN THE LORD

208 Maestoso ad lib.



215 A tempo ♩ = 100

