

# AIR in a

(From 'Sonata in A minor')  
for Trumpet & Organ

Score (01':04")

John Christopher Pepusch (1667 - 1752)

Arr. Michel Rondeau

Moderato ♩ = 80

Trumpet in C

Organ

This system contains the first three measures of the piece. The Trumpet in C part is written in a single treble clef staff with a common time signature. The Organ part is written in two staves (treble and bass clefs) with a common time signature. The tempo is marked 'Moderato' with a quarter note equal to 80 beats per minute. The key signature has one sharp (F#).

C Tpt.

Org.

This system contains measures 4 through 7. The C Trumpet part continues with melodic lines, including a four-measure rest at the beginning of measure 4. The Organ part provides harmonic support with chords and moving lines in both hands.

C Tpt.

Org.

This system contains measures 8 through 11. The C Trumpet part features a melodic line that ends with a fermata in measure 8, marked 'Fine'. The Organ part continues with its accompaniment.

C Tpt.

Org.

This system contains measures 12 through 15. The C Trumpet part has a melodic line that concludes with a fermata in measure 12, marked 'D.C. al Fine'. The Organ part provides the final accompaniment.

# AIR in a

(From 'Sonata in A minor')  
for Trumpet & Organ

## Trumpet in C

John Christopher Pepusch (1667 - 1752)

Arr. Michel Rondeau

Moderato  $\text{♩} = 80$



# AIR in a

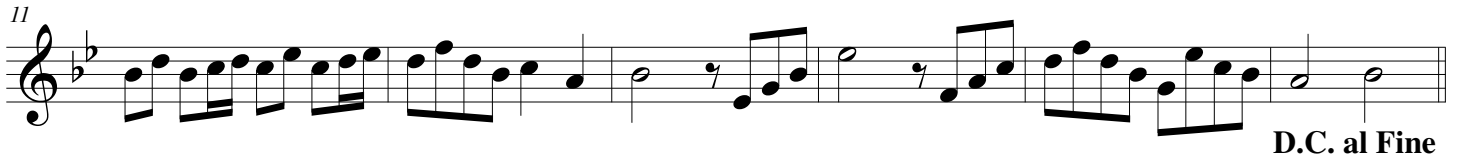
(From 'Sonata in A minor')  
for Trumpet & Organ

## Trumpet in D

John Christopher Pepusch (1667 - 1752)

Arr. Michel Rondeau

Moderato  $\text{♩} = 80$



# AIR in a

(From 'Sonata in A minor')  
for Trumpet & Organ

Score (01':04")

John Christopher Pepusch (1667 - 1752)

Arr. Michel Rondeau

Moderato ♩ = 80

Trumpet in C

Organ

This system contains the first three measures of the piece. The Trumpet in C part is in the upper staff, and the Organ part is in the lower two staves. The tempo is Moderato with a quarter note equal to 80 beats per minute. The key signature has one sharp (F#).

C Tpt.

Org.

This system contains measures 4 through 7. The C Trumpet part continues with melodic lines, and the Organ part provides harmonic support with chords and moving lines in both hands.

C Tpt.

Org.

This system contains measures 8 through 11. The C Trumpet part features a melodic line that ends with a fermata. The Organ part continues with a rhythmic accompaniment. A "Fine" marking is present above the organ staff at measure 10.

C Tpt.

Org.

This system contains measures 12 through 15. The C Trumpet part continues with a melodic line. The Organ part provides accompaniment. A "D.C. al Fine" marking is present above the organ staff at measure 15.