

1315

18.

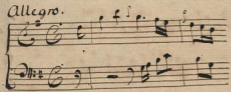
346

*Donata*  
*per il Violino Solo*

*del Sig. Franc. Ponda*

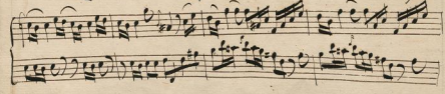
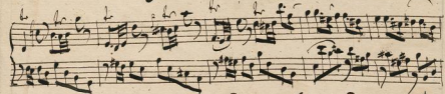
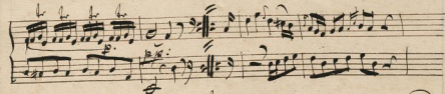
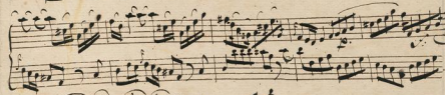
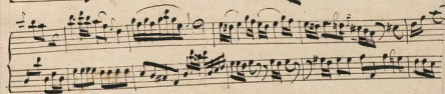
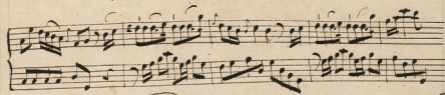
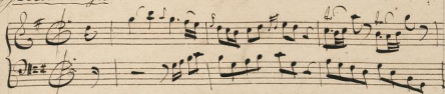


*Allegro.*



2  
Molto Allegro

Violino Solo.



This image shows a page of handwritten musical notation, likely a piano score. The page is divided into ten systems, each consisting of two staves. The notation includes various clefs (treble and bass), notes, rests, and dynamic markings. The first system starts with a treble clef and a key signature of one flat. The notation is dense, with many sixteenth and thirty-second notes. The final system includes the dynamic marking *pp.* and the word *Venti...* written in a cursive hand. The paper shows signs of age, with some staining and wear.

4  
*Largo.*

A handwritten musical score for a piece titled "Largo". The score is written on ten systems of two staves each, with a treble clef on the upper staff and a bass clef on the lower staff. The key signature is one sharp (F#) and the time signature is 3/8. The music is characterized by a slow tempo and features a variety of rhythmic patterns, including eighth and sixteenth notes, often grouped with slurs. There are several dynamic markings, including "p" (piano) and "sp" (sforzando), and some notes are marked with accents. The notation is dense and expressive, typical of a Romantic-era manuscript.

A handwritten musical score consisting of six staves. The first two staves are in treble and bass clefs with a key signature of one sharp (F#). The notation includes various rhythmic values, slurs, and dynamic markings. The third and fourth staves continue the piece with similar notation. The fifth and sixth staves feature a prominent tremolo effect, indicated by dense, wavy lines. The manuscript is written in dark ink on aged, slightly yellowed paper.

*Forz.*

6  
*Allegretto.*

A handwritten musical score for a piece titled "Allegretto". The score is written on ten systems of two staves each. The top staff of each system is in treble clef, and the bottom staff is in bass clef. The key signature is one sharp (F#), and the time signature is 3/8. The music is characterized by a lively, rhythmic feel, with frequent sixteenth and thirty-second notes, often grouped in beams. There are several measures with repeat signs (double bar lines with dots) and some measures with fermatas. The notation includes various ornaments and slurs, and the overall style is typical of 18th or 19th-century manuscript notation.



Handwritten musical notation on a single staff, featuring a treble clef and a key signature of one sharp (F#). The notation includes a series of sixteenth-note runs and rests, ending with a double bar line.

Handwritten musical notation on a single staff, featuring a treble clef and a key signature of one sharp (F#). The notation includes a series of sixteenth-note runs and rests, ending with a double bar line.

Handwritten musical notation on a single staff, featuring a treble clef and a key signature of one sharp (F#). The notation includes a series of sixteenth-note runs and rests, ending with a double bar line.

Handwritten musical notation on a single staff, featuring a treble clef and a key signature of one sharp (F#). The notation includes a series of sixteenth-note runs and rests, ending with a double bar line.

Handwritten musical notation on a single staff, featuring a treble clef and a key signature of one sharp (F#). The notation includes a series of sixteenth-note runs and rests, ending with a double bar line.

Handwritten musical notation on a single staff, featuring a treble clef and a key signature of one sharp (F#). The notation includes a series of sixteenth-note runs and rests, ending with a double bar line.

Handwritten musical notation on a single staff, featuring a treble clef and a key signature of one sharp (F#). The notation includes a series of sixteenth-note runs and rests, ending with a double bar line.

Handwritten musical notation on a single staff, featuring a treble clef and a key signature of one sharp (F#). The notation includes a series of sixteenth-note runs and rests, ending with a double bar line.

18

Vertical text along the right edge, possibly bleed-through from the reverse side of the page.

Small, faint handwritten mark or signature in the lower-left quadrant.