

# Symphony #1 (1) in Cmajor

Double Bass

1st Movement(6'10")

Michel Rondeau  
1972.

Marche (♩ = circa 100)

*f*

9 *2* *pizz.*

16 *5*

26 *f* *3*

34 *mf*

40

46 *f*

52 *mf*

59 *5*

69

74

Symphony #1 (1) in Cmajor Double Bass

2  
79



84



89



94



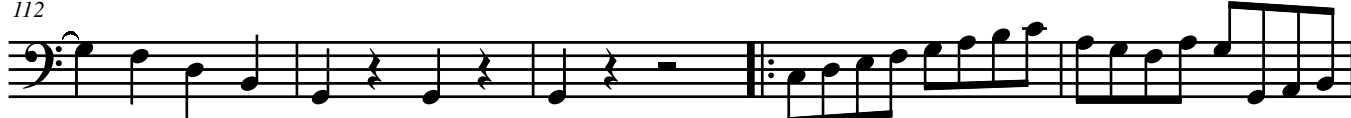
100



106



112



117



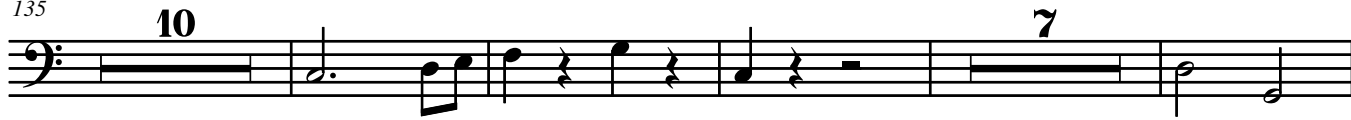
122



128



135



Symphony #1 (1) in Cmajor Double Bass

156 arco pizz.

162 arco pizz.

168

174

180

186

193

199

207

213

218

Symphony #1 (1) in Cmajor Double Bass

4

223

3

231

236

pizz.

243

arco

248

252

258

265

269

274

⊕ Coda

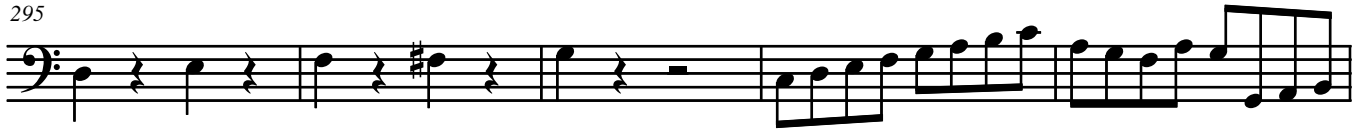
6

284

289



295



300



305

