

Libro
di capricci, e ricercati, composto e humilis^{ss} dedicato
Alla sacra Cesarea Maestà

di
Leopoldo primo
Libro Terzo.

da
Gio Giacomo Frsterger

Suora Casarca Martini

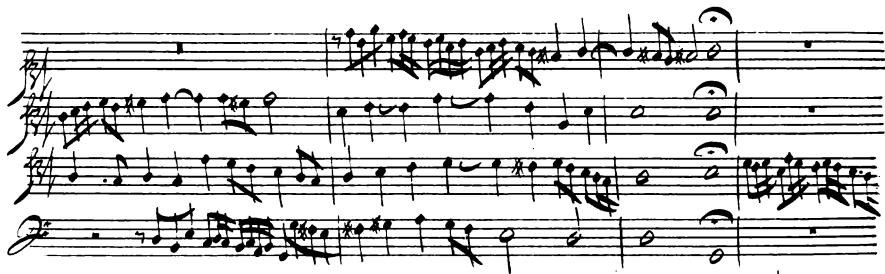
A' piedi della Maestà Vostra Casarca prostrata, comparisce
questa operetta come parto dell' mia debolezza, e tributo decoroso
alla liberalità Imperatoria: Confida anchor ella di essere ammessa
e gradita dalla Maestà V. con quell' innata clemenza che sono
stati li precedenti, di chi con profundissimo inchino Supplica
V. M^{ta} Cas.
Es.

L'humil^{mo} fedel^{mo} e obligat^{mo} ser.
Gio: Giacomo Heberger

Capriccio .p.

This system of handwritten musical notation consists of four staves. The first staff is a treble clef with a common time signature (C) and contains a melodic line with many sixteenth notes. The second staff is a treble clef with a common time signature (C) and contains a more active melodic line with many sixteenth notes. The third staff is a treble clef with a common time signature (C) and contains a bass line with many sixteenth notes. The fourth staff is a bass clef with a common time signature (C) and contains a bass line with many sixteenth notes. The word "Capriccio .p." is written in cursive on the left side of the first staff.

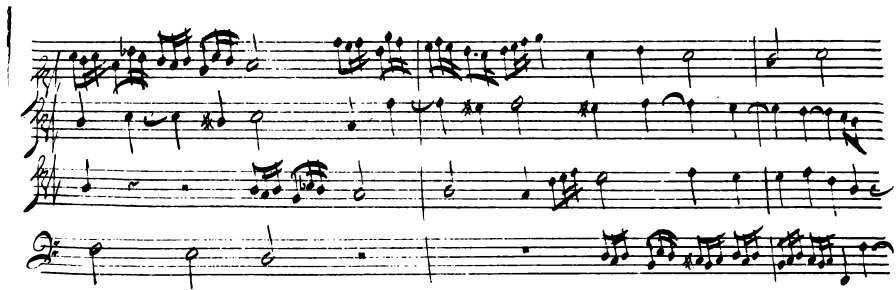
This system of handwritten musical notation consists of four staves. The first staff is a treble clef with a common time signature (C) and contains a melodic line with many sixteenth notes. The second staff is a treble clef with a common time signature (C) and contains a more active melodic line with many sixteenth notes. The third staff is a treble clef with a common time signature (C) and contains a bass line with many sixteenth notes. The fourth staff is a bass clef with a common time signature (C) and contains a bass line with many sixteenth notes.



Handwritten musical score system 1, consisting of four staves. The top staff is in treble clef with a key signature of one sharp (F#) and a common time signature (C). The second and third staves are in treble clef with a key signature of one sharp (F#). The bottom staff is in bass clef with a key signature of one sharp (F#). The music features complex rhythmic patterns, including sixteenth and thirty-second notes, and rests. The notation is dense and includes various accidentals and phrasing slurs.



Handwritten musical score system 2, consisting of four staves. The top staff is in treble clef with a key signature of one sharp (F#) and a common time signature (C). The second and third staves are in treble clef with a key signature of one sharp (F#). The bottom staff is in bass clef with a key signature of one sharp (F#). The music continues with complex rhythmic patterns, including sixteenth and thirty-second notes, and rests. The notation is dense and includes various accidentals and phrasing slurs.



Handwritten musical score system 1, consisting of four staves. The top staff features a complex melodic line with many beamed notes and slurs. The second and third staves contain more rhythmic and melodic accompaniment. The bottom staff is a bass line with fewer notes and rests. The notation is dense and appears to be a working draft.



Handwritten musical score system 2, consisting of four staves. This system shows a different section of the music, with a more prominent bass line in the bottom staff. The top staff has several measures with rests, followed by a melodic phrase. The second and third staves provide harmonic support with various note values and slurs. The notation is consistent with the first system, showing a continuous piece of music.



The first system of the handwritten musical score consists of four staves. The top staff is a treble clef with a key signature of one flat (B-flat) and a common time signature (C). It features a melodic line with a long slur over a series of eighth notes, followed by a half note and a quarter note. The second staff is a treble clef with a key signature of one flat and a common time signature, containing a series of quarter notes and a half note. The third staff is a treble clef with a key signature of one flat and a common time signature, containing a series of quarter notes and a half note. The bottom staff is a bass clef with a key signature of one flat and a common time signature, containing a series of quarter notes and a half note.

The second system of the handwritten musical score consists of four staves. The top staff is a treble clef with a key signature of one flat and a common time signature, containing a series of quarter notes and a half note. The second staff is a treble clef with a key signature of one flat and a common time signature, containing a series of quarter notes and a half note. The third staff is a treble clef with a key signature of one flat and a common time signature, containing a series of quarter notes and a half note. The bottom staff is a bass clef with a key signature of one flat and a common time signature, containing a series of quarter notes and a half note.

The first system of the handwritten musical score consists of four staves. The notation is highly complex and dense, featuring numerous beamed notes, slurs, and intricate rhythmic patterns. The top staff begins with a treble clef and a key signature of one sharp (F#). The second and third staves also use treble clefs, while the bottom staff uses a bass clef. The music is characterized by rapid sixteenth-note passages and complex phrasing, suggesting a highly technical or virtuosic piece.

The second system of the handwritten musical score continues the complex notation from the first system. It also consists of four staves, with the top three in treble clef and the bottom in bass clef. The notation remains dense and intricate, with many beamed notes and slurs. The piece concludes with a double bar line at the end of the fourth staff.

Handwritten musical notation on four staves. The notation includes notes, rests, and stems. To the right of the notes, there are five fish-like symbols (fish heads) drawn vertically, each with a small circle above it. The top two staves have a large, dense scribble of diagonal lines on the right side. The bottom staff has some faint scribbles and a small signature-like mark.

Five empty musical staves, each consisting of five horizontal lines, arranged vertically.

Capriccio . n.º 1

This system of a handwritten musical score consists of three staves. The top staff is a treble clef with a key signature of one sharp (F#) and a common time signature (C). It contains a melodic line with various note values and rests. The middle staff is a bass clef with a common time signature (C), providing a harmonic accompaniment. The bottom staff is a bass clef with a common time signature (C), which is mostly empty with a few notes. The word "Capriccio . n.º 1" is written in cursive on the left side of the middle staff.

This system of a handwritten musical score consists of three staves. The top staff is a treble clef with a key signature of one sharp (F#) and a common time signature (C). It contains a melodic line with various note values and rests. The middle staff is a bass clef with a common time signature (C), providing a harmonic accompaniment. The bottom staff is a bass clef with a common time signature (C), providing a harmonic accompaniment. The notation is dense and includes many sixteenth and thirty-second notes.

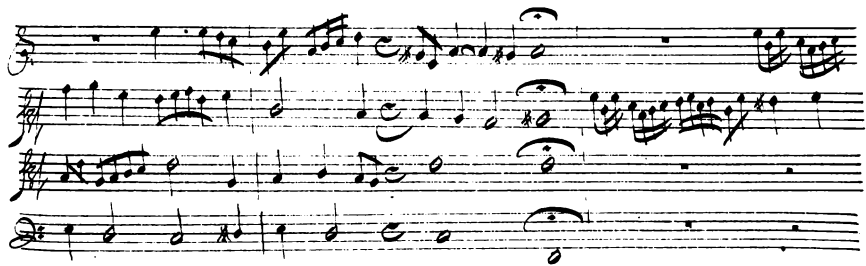





Handwritten musical score system 1, consisting of four staves. The top staff is in treble clef, the second and third are in alto clef, and the bottom is in bass clef. The music features a complex melodic line in the upper staves and a more rhythmic accompaniment in the lower staves. The notation includes various note values, rests, and accidentals.



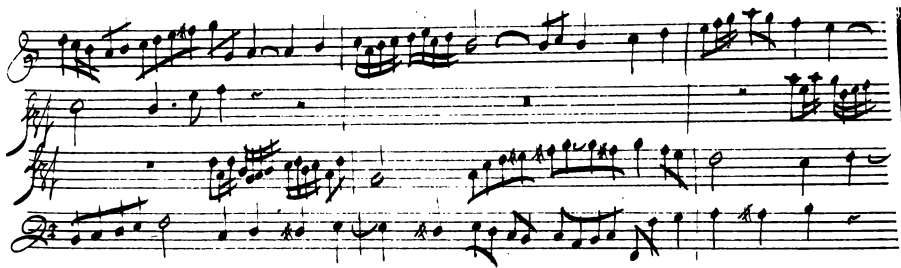
Handwritten musical score system 2, consisting of four staves. The top staff is in treble clef, the second and third are in alto clef, and the bottom is in bass clef. This system continues the musical piece with similar notation to the first system, showing intricate melodic passages and accompaniment.



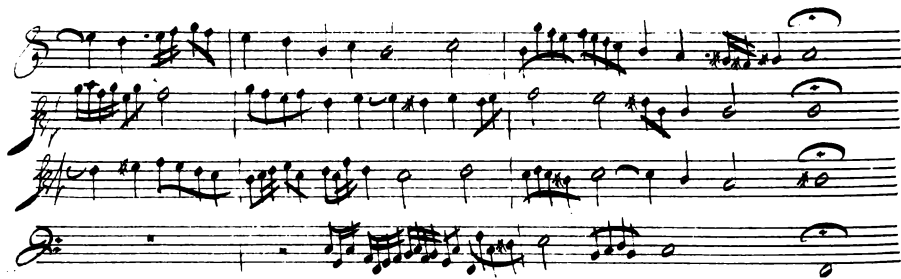
Handwritten musical score system 1, consisting of four staves. The top staff is in treble clef, the second and third are in alto clef, and the bottom is in bass clef. The music features various note values, including eighth and sixteenth notes, and rests. A double bar line is present in the second measure of the top staff.



Handwritten musical score system 2, consisting of four staves. The top staff is in treble clef, the second and third are in alto clef, and the bottom is in bass clef. The music continues with complex rhythmic patterns, including many sixteenth notes and rests. A double bar line is present in the second measure of the top staff.



Handwritten musical score system 1, consisting of four staves. The top staff is in treble clef with a key signature of one sharp (F#) and a common time signature (C). It features a melodic line with eighth and sixteenth notes, including a triplet of eighth notes. The second staff is in treble clef with a common time signature, containing a bass line with quarter and eighth notes. The third staff is in treble clef with a common time signature, featuring a melodic line with eighth and sixteenth notes, including a triplet. The bottom staff is in bass clef with a common time signature, containing a bass line with quarter and eighth notes.



Handwritten musical score system 2, consisting of four staves. The top staff is in treble clef with a key signature of one sharp (F#) and a common time signature (C). It features a melodic line with quarter and eighth notes, ending with a half note. The second staff is in treble clef with a common time signature, containing a bass line with quarter and eighth notes, ending with a half note. The third staff is in treble clef with a common time signature, featuring a melodic line with quarter and eighth notes, ending with a half note. The bottom staff is in bass clef with a common time signature, containing a bass line with quarter and eighth notes, ending with a half note.

Handwritten musical score for the first system, consisting of three staves. The top staff is in treble clef, the middle in alto clef, and the bottom in bass clef. The music is written in a common time signature (C) and features a complex melodic line in the upper staves and a more rhythmic accompaniment in the lower staff.

Handwritten musical score for the second system, consisting of three staves. The top staff is in treble clef, the middle in alto clef, and the bottom in bass clef. The music continues from the first system, showing a continuation of the melodic and rhythmic themes.

The first system of the handwritten musical score consists of four staves. The top staff is in treble clef and contains a melodic line with several triplet markings. The second staff is in treble clef and features a complex rhythmic accompaniment with many beamed notes. The third staff is in treble clef and continues the melodic or harmonic line. The bottom staff is in bass clef and provides a bass line with a steady rhythmic pattern. The notation is dense and includes various ornaments and slurs.

The second system of the handwritten musical score also consists of four staves. The top staff is in treble clef and shows a melodic line with some rests and slurs. The second staff is in treble clef and has a complex rhythmic accompaniment with many beamed notes. The third staff is in treble clef and continues the melodic or harmonic line. The bottom staff is in bass clef and provides a bass line with a steady rhythmic pattern. The notation is dense and includes various ornaments and slurs.

Handwritten musical score for the first system, consisting of four staves. The notation includes various note values (quarter, eighth, and sixteenth notes), rests, and dynamic markings. The first staff begins with a treble clef and a key signature of one sharp (F#). The second staff begins with a treble clef and a key signature of one sharp. The third staff begins with a treble clef and a key signature of one sharp. The fourth staff begins with a bass clef and a key signature of one sharp. The music is written in a fluid, cursive style.

Handwritten musical score for the second system, consisting of four staves. The notation includes various note values (quarter, eighth, and sixteenth notes), rests, and dynamic markings. The first staff begins with a treble clef and a key signature of one sharp. The second staff begins with a treble clef and a key signature of one sharp. The third staff begins with a treble clef and a key signature of one sharp. The fourth staff begins with a bass clef and a key signature of one sharp. The music is written in a fluid, cursive style. The system concludes with a double bar line and a decorative flourish. The word "aria" is written in the bottom right corner of the system.

Capriccio op. 2

Handwritten musical score for the first system of "Capriccio op. 2". The score is written on four staves. The first three staves are in treble clef with a common time signature (C). The fourth staff is in bass clef with a common time signature (C). The music features a complex melodic line in the upper staves and a more rhythmic accompaniment in the lower staves.

Handwritten musical score for the second system of "Capriccio op. 2". The score is written on four staves. The first three staves are in treble clef with a common time signature (C). The fourth staff is in bass clef with a common time signature (C). The music continues with complex melodic and rhythmic patterns.

The first system of the handwritten musical score consists of four staves. The top two staves are in treble clef, and the bottom two are in bass clef. The notation includes various rhythmic values such as eighth and sixteenth notes, as well as rests. The music is written in a fluid, cursive style with some ink bleed-through from the reverse side of the page.

The second system of the handwritten musical score also consists of four staves, with the top two in treble clef and the bottom two in bass clef. This system continues the musical piece with similar notation to the first system, including complex rhythmic patterns and rests. The handwriting remains consistent, showing a clear but somewhat hurried composition process.

The first system of the handwritten musical score consists of four staves. The top staff begins with a treble clef and a key signature of one sharp (F#). It contains a complex melodic line with many sixteenth and thirty-second notes, including a triplet of sixteenth notes. The second staff continues the melodic line with similar rhythmic complexity. The third staff features a more rhythmic accompaniment with eighth and sixteenth notes. The bottom staff is in bass clef and provides a harmonic foundation with a mix of quarter and eighth notes.

The second system of the handwritten musical score also consists of four staves. The top staff continues the melodic line from the first system, featuring a triplet of sixteenth notes. The second staff continues the melodic line with similar rhythmic complexity. The third staff features a more rhythmic accompaniment with eighth and sixteenth notes. The bottom staff is in bass clef and provides a harmonic foundation with a mix of quarter and eighth notes.

Handwritten musical score for the first system, consisting of four staves. The top staff is in treble clef, and the bottom staff is in bass clef. The time signature is 3/4. The music includes various note values, rests, and accidentals (sharps and naturals).

Handwritten musical score for the second system, consisting of four staves. The notation continues from the first system, featuring treble and bass clefs, a 3/4 time signature, and various musical notations including notes, rests, and accidentals.

The first system of the handwritten musical score consists of four staves. The top staff is in treble clef and contains a melodic line with eighth and sixteenth notes, ending with a series of sixteenth notes. The second staff is in treble clef and features a more complex rhythmic pattern with eighth and sixteenth notes, including some beamed notes. The third staff is in treble clef and shows a melodic line with eighth and sixteenth notes, some with ties. The bottom staff is in bass clef and provides a bass line with eighth and sixteenth notes, including some beamed notes and rests.

The second system of the handwritten musical score also consists of four staves. The top staff is in treble clef and contains a melodic line with eighth and sixteenth notes, including some beamed notes. The second staff is in treble clef and features a complex rhythmic pattern with eighth and sixteenth notes, including some beamed notes and rests. The third staff is in treble clef and shows a melodic line with eighth and sixteenth notes, some with ties. The bottom staff is in bass clef and provides a bass line with eighth and sixteenth notes, including some beamed notes and rests.

Handwritten musical score, first system, four staves. The notation is dense and includes various rhythmic values, accidentals, and dynamic markings. The first two staves are in treble clef, and the last two are in bass clef. The system is divided into two measures by a vertical bar line. The first measure contains a complex melodic line with many notes and slurs. The second measure contains a similar melodic line, but with some notes crossed out with diagonal lines. There are also some markings that look like '12' and '9' above the staves in the second measure.

Handwritten musical score, second system, four staves. The notation continues from the first system. The first two staves are in treble clef, and the last two are in bass clef. The system is divided into two measures by a vertical bar line. The first measure contains a complex melodic line with many notes and slurs. The second measure contains a similar melodic line, but with some notes crossed out with diagonal lines. There are also some markings that look like '12' and '9' above the staves in the second measure.

Handwritten musical score for the first system, consisting of four staves. The top two staves are in treble clef, and the bottom two are in bass clef. The music is written in a single system with a common time signature. The notation includes various note values, rests, and dynamic markings.

Handwritten musical score for the second system, consisting of four staves. The top two staves are in treble clef, and the bottom two are in bass clef. The music continues from the first system, maintaining the same notation style and clef structure.

Handwritten musical score for the first system, consisting of four staves. The notation includes various note values, rests, and accidentals. The first staff begins with a treble clef and a key signature of one sharp (F#). The second and third staves also use treble clefs, while the fourth staff uses a bass clef. The music is written in a fluid, handwritten style with some ink bleed-through and corrections.

Handwritten musical score for the second system, consisting of four staves. The notation includes various note values, rests, and accidentals. The first staff begins with a treble clef and a key signature of one sharp (F#). The second and third staves also use treble clefs, while the fourth staff uses a bass clef. The music is written in a fluid, handwritten style with some ink bleed-through and corrections.

The first system of the handwritten musical score consists of four staves. The top two staves are in treble clef, and the bottom two are in bass clef. The music is written in a single system with a common time signature. The notation includes various note values, rests, and dynamic markings. The first staff begins with a treble clef and a key signature of one sharp (F#). The second staff starts with a treble clef and a key signature of one flat (Bb). The third staff begins with a treble clef and a key signature of one flat (Bb). The fourth staff starts with a bass clef and a key signature of one flat (Bb). The music is characterized by complex rhythmic patterns and melodic lines, with some passages featuring slurs and ties.

The second system of the handwritten musical score also consists of four staves, continuing the piece from the first system. The top two staves are in treble clef, and the bottom two are in bass clef. The notation is consistent with the first system, featuring a variety of note values, rests, and dynamic markings. The music continues with complex rhythmic patterns and melodic lines, maintaining the same key signature and time signature as the first system. The notation includes slurs, ties, and other musical symbols, indicating a continuation of the piece's intricate structure.



Handwritten musical score system 1, consisting of four staves. The top staff is a vocal line with a treble clef and a key signature of one flat. The second and third staves are piano accompaniment, with the second staff in treble clef and the third staff in bass clef. The bottom staff is a bass line in bass clef. The music is written in a fluid, handwritten style with various note values and rests.



Handwritten musical score system 2, consisting of four staves. The top staff is a vocal line with a treble clef and a key signature of one flat. The second and third staves are piano accompaniment, with the second staff in treble clef and the third staff in bass clef. The bottom staff is a bass line in bass clef. The music continues with similar notation to the first system, featuring complex rhythmic patterns and melodic lines.

A handwritten musical score consisting of four staves. The notation is in black ink on white paper. The first staff begins with a treble clef and a key signature of one sharp (F#). The music features a mix of quarter, eighth, and sixteenth notes, with some complex passages. The second and third staves continue the melodic lines. The fourth staff includes a bass clef and a key signature of one sharp. The piece concludes with a double bar line and a fermata. The name 'L. Coriani' is written in cursive at the bottom right of the page.

Four empty musical staves, each consisting of five horizontal lines, arranged vertically. They are completely blank and contain no musical notation.

Capriccio - s.

The first system of the handwritten musical score consists of four staves. The top staff begins with a treble clef and a common time signature (C). The second staff is marked with a treble clef and a common time signature, and contains a complex melodic line with many sixteenth notes. The third staff is marked with a treble clef and a common time signature, and contains a simpler melodic line. The fourth staff is marked with a bass clef and a common time signature, and contains a melodic line with some sixteenth notes.

The second system of the handwritten musical score consists of four staves. The top staff begins with a treble clef and a common time signature. The second staff is marked with a treble clef and a common time signature. The third staff is marked with a treble clef and a common time signature. The fourth staff is marked with a bass clef and a common time signature. The music continues with various rhythmic patterns and melodic lines across all staves.

The first system of the handwritten musical score consists of four staves. The top staff is in treble clef and begins with a treble clef symbol. The second staff is in alto clef and begins with an alto clef symbol. The third staff is in bass clef and begins with a bass clef symbol. The fourth staff is in bass clef and begins with a bass clef symbol. The music is written in a single system and includes various rhythmic values such as eighth and sixteenth notes, as well as rests.

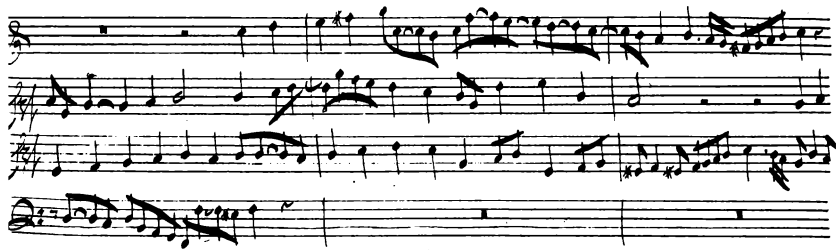
The second system of the handwritten musical score also consists of four staves. The top staff is in treble clef and begins with a treble clef symbol. The second staff is in alto clef and begins with an alto clef symbol. The third staff is in bass clef and begins with a bass clef symbol. The fourth staff is in bass clef and begins with a bass clef symbol. The music continues with various rhythmic values and rests, maintaining the same notation style as the first system.



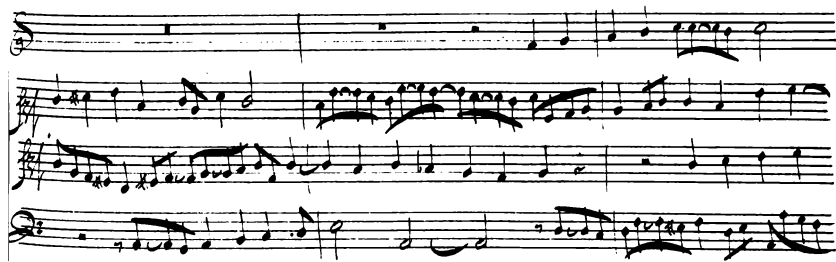
Handwritten musical score system 1, consisting of four staves. The top staff is in treble clef, the second in alto clef, the third in treble clef, and the bottom in bass clef. The music features a variety of note values including eighth, sixteenth, and thirty-second notes, as well as rests and slurs. The notation is dense and expressive, with many slurs and ties.



Handwritten musical score system 2, consisting of four staves. The top staff is in treble clef, the second in alto clef, the third in treble clef, and the bottom in bass clef. The music continues with similar notation to the first system, featuring complex rhythmic patterns and melodic lines. The handwriting is consistent and clear throughout the piece.



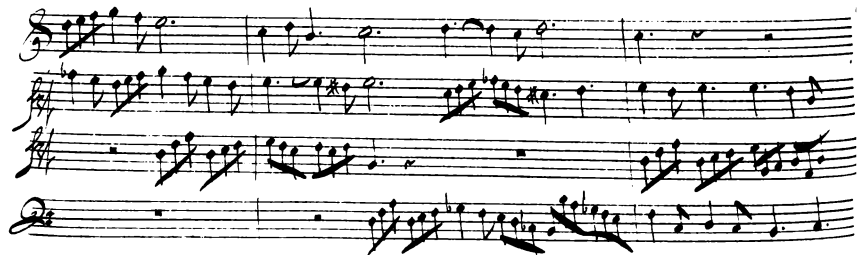
Handwritten musical score system 1, consisting of four staves. The top staff is in bass clef with a key signature of one sharp (F#) and a common time signature (C). The second and third staves are in treble clef with a key signature of one sharp (F#) and a common time signature (C). The bottom staff is in bass clef with a key signature of one sharp (F#) and a common time signature (C). The music features a variety of note values, including eighth and sixteenth notes, and rests.



Handwritten musical score system 2, consisting of four staves. The top staff is in bass clef with a key signature of one sharp (F#) and a common time signature (C). The second and third staves are in treble clef with a key signature of one sharp (F#) and a common time signature (C). The bottom staff is in bass clef with a key signature of one sharp (F#) and a common time signature (C). The music continues with similar notation to the first system, including eighth and sixteenth notes and rests.



Handwritten musical score system 1, consisting of three staves. The top staff is in treble clef, the middle in alto clef, and the bottom in bass clef. The music features a variety of note values, including quarter, eighth, and sixteenth notes, as well as rests and slurs. The notation is dense and expressive, with many slurs and ties.



Handwritten musical score system 2, consisting of three staves. The top staff is in treble clef, the middle in alto clef, and the bottom in bass clef. The music continues with similar notation to the first system, featuring a mix of note values and rests. The handwriting is consistent and clear.



Handwritten musical score system 1, consisting of four staves. The top staff is in treble clef, the second and third are in alto clef, and the bottom is in bass clef. The music features complex rhythmic patterns, including sixteenth and thirty-second notes, and rests.



Handwritten musical score system 2, consisting of four staves. The top staff is in treble clef, the second and third are in alto clef, and the bottom is in bass clef. The music continues with complex rhythmic patterns, including sixteenth and thirty-second notes, and rests.

A handwritten musical score consisting of four staves. The top staff is in treble clef, the second and third are in alto clef, and the bottom is in bass clef. The music is written in a single system with various note values, including eighth and sixteenth notes, and rests. The notation is fluid and characteristic of a working draft.

A handwritten musical score consisting of four staves. The top staff is in treble clef, the second and third are in alto clef, and the bottom is in bass clef. The music is written in a single system. The lyrics "na" are written below the notes on the second, third, and fourth staves. A large, dark scribble is present on the right side of the staves, partially obscuring the notation. The notation includes various note values and rests.

Capriccio.

The first system of the handwritten musical score consists of four staves. The top staff is in treble clef with a key signature of one flat (B-flat) and a common time signature (C). It contains a melodic line with eighth and sixteenth notes. The second staff is in alto clef with a common time signature (C) and contains a melodic line with eighth and sixteenth notes. The third staff is in alto clef with a common time signature (C) and contains a melodic line with eighth and sixteenth notes. The fourth staff is in bass clef with a common time signature (C) and contains a melodic line with eighth and sixteenth notes.

The second system of the handwritten musical score consists of four staves. The top staff is in treble clef with a key signature of one flat (B-flat) and a common time signature (C). It contains a melodic line with eighth and sixteenth notes. The second staff is in alto clef with a common time signature (C) and contains a melodic line with eighth and sixteenth notes. The third staff is in alto clef with a common time signature (C) and contains a melodic line with eighth and sixteenth notes. The fourth staff is in bass clef with a common time signature (C) and contains a melodic line with eighth and sixteenth notes.

The first system of the handwritten musical score consists of four staves. The top staff is in treble clef with a key signature of one flat (B-flat) and a 7/8 time signature. It contains a complex melodic line with many sixteenth and thirty-second notes, including some triplets. The second staff is in treble clef with a key signature of one sharp (F#) and contains a melodic line with some rests. The third staff is in treble clef with a key signature of one flat (B-flat) and contains a melodic line with many sixteenth notes. The bottom staff is in bass clef with a key signature of one flat (B-flat) and contains a melodic line with many sixteenth notes. The system concludes with a double bar line.

The second system of the handwritten musical score consists of four staves. The top staff is in treble clef with a key signature of one flat (B-flat) and contains a melodic line with many sixteenth notes. The second staff is in treble clef with a key signature of one sharp (F#) and contains a melodic line with many sixteenth notes. The third staff is in treble clef with a key signature of one flat (B-flat) and contains a melodic line with many sixteenth notes. The bottom staff is in bass clef with a key signature of one flat (B-flat) and contains a melodic line with many sixteenth notes. The system concludes with a double bar line.

Handwritten musical score for the first system, consisting of four staves. The top staff uses a treble clef, while the two middle staves use alto clefs and the bottom staff uses a bass clef. The music is written in a key with one flat (B-flat) and a common time signature. The notation includes various note values, rests, and dynamic markings such as *mf* and *ff*. The first staff features a complex melodic line with many sixteenth notes and slurs. The second and third staves provide harmonic support with a mix of quarter and eighth notes. The fourth staff contains a bass line with a steady eighth-note accompaniment.

Handwritten musical score for the second system, also consisting of four staves with the same clef arrangement as the first system. The notation continues with similar rhythmic patterns and melodic development. The top staff shows a melodic phrase that concludes with a fermata. The second and third staves continue their harmonic roles, with some slurs and dynamic markings. The bottom staff maintains its accompaniment, ending with a fermata on a whole note. The overall style is that of a personal manuscript or a student's composition.



Handwritten musical score system 1, consisting of four staves. The top staff is in treble clef, the second and third are in alto clef, and the bottom is in bass clef. The music features complex rhythmic patterns, including sixteenth and thirty-second notes, and rests.



Handwritten musical score system 2, consisting of four staves. The top staff is in treble clef, the second and third are in alto clef, and the bottom is in bass clef. The music continues with complex rhythmic patterns, including sixteenth and thirty-second notes, and rests.

A handwritten musical score consisting of four staves. The top staff is in treble clef, the second and third are in alto clef, and the bottom is in bass clef. The notation includes various note values, rests, and dynamic markings such as *pp* and *ppp*. The music is written in a fluid, expressive style.

A handwritten musical score consisting of four staves. The notation is heavily obscured by large, dark, expressive scribbles that cover much of the notes and staff lines. Some notes and clefs are still visible, but the overall structure is difficult to discern. The word *ritardando* is written at the bottom right of the page.

Handwritten musical score for the first system of a piece titled "Capriccio No. 1". The score is written on four staves. The top staff is a treble clef with a common time signature (C) and contains a few notes. The second staff is a treble clef with a common time signature (C) and contains a melodic line with many notes. The third staff is a treble clef with a common time signature (C) and contains a melodic line with many notes. The bottom staff is a bass clef with a common time signature (C) and contains a few notes. The word "Capriccio No. 1" is written in cursive on the left side of the second staff.

Handwritten musical score for the second system of a piece titled "Capriccio No. 1". The score is written on four staves. The top staff is a treble clef with a common time signature (C) and contains a few notes. The second staff is a treble clef with a common time signature (C) and contains a melodic line with many notes. The third staff is a treble clef with a common time signature (C) and contains a melodic line with many notes. The bottom staff is a bass clef with a common time signature (C) and contains a melodic line with many notes.

Handwritten musical score for the first system, consisting of four staves. The notation includes various note values, rests, and dynamic markings. The first staff begins with a treble clef and a key signature of one sharp (F#). The second staff has a treble clef and a key signature of one sharp. The third staff has a treble clef and a key signature of one sharp. The fourth staff has a bass clef and a key signature of one sharp. The music features a mix of quarter, eighth, and sixteenth notes, along with rests and slurs.

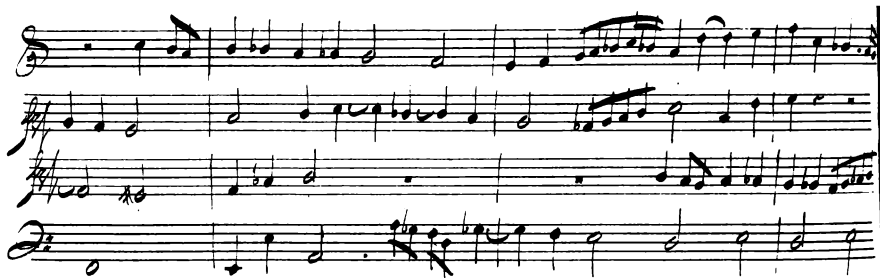
Handwritten musical score for the second system, consisting of four staves. The notation includes various note values, rests, and dynamic markings. The first staff begins with a treble clef and a key signature of one sharp (F#). The second staff has a treble clef and a key signature of one sharp. The third staff has a treble clef and a key signature of one sharp. The fourth staff has a bass clef and a key signature of one sharp. The music features a mix of quarter, eighth, and sixteenth notes, along with rests and slurs.

Handwritten musical score for the first system, consisting of four staves. The top staff is in treble clef, the two middle staves are in alto clef, and the bottom staff is in bass clef. The music is written in a common time signature (C) and includes various note values such as quarter, eighth, and sixteenth notes, as well as rests and slurs.

Handwritten musical score for the second system, consisting of four staves. The top staff is in treble clef, the two middle staves are in alto clef, and the bottom staff is in bass clef. The music continues with various note values, rests, and slurs, maintaining the same time signature as the first system.

Handwritten musical score for the first system, consisting of four staves. The top staff uses a treble clef, while the two middle staves and the bottom staff use a bass clef. The music is written in a common time signature (C) and a key signature of one sharp (F#). The notation includes various note values such as quarter, eighth, and sixteenth notes, as well as rests and slurs. The first staff begins with a whole rest, followed by a series of eighth and sixteenth notes. The second staff contains a complex rhythmic pattern with many beamed notes. The third staff continues with similar rhythmic patterns, and the fourth staff provides a bass line with eighth and sixteenth notes.

Handwritten musical score for the second system, consisting of four staves. The top staff uses a treble clef, while the two middle staves and the bottom staff use a bass clef. The music is written in a common time signature (C) and a key signature of one sharp (F#). The notation includes various note values such as quarter, eighth, and sixteenth notes, as well as rests and slurs. The first staff begins with a series of eighth notes, followed by a whole rest. The second staff contains a complex rhythmic pattern with many beamed notes. The third staff continues with similar rhythmic patterns, and the fourth staff provides a bass line with eighth and sixteenth notes.



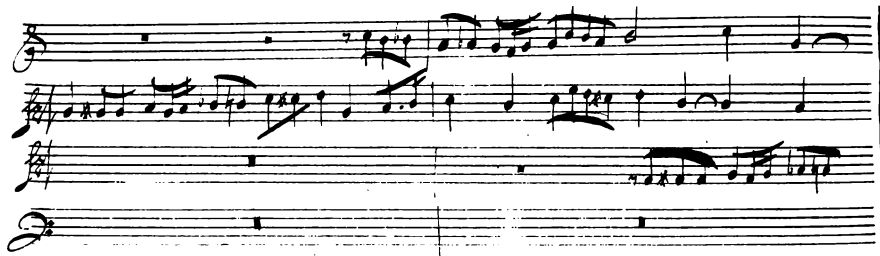
Handwritten musical score system 1, consisting of four staves. The top staff is in treble clef, the second and third are in alto clef, and the bottom is in bass clef. The music features a variety of note values including quarter, eighth, and sixteenth notes, along with rests and dynamic markings.



Handwritten musical score system 2, consisting of four staves. The top staff is in treble clef, the second and third are in alto clef, and the bottom is in bass clef. The music continues with similar notation to the first system, including complex rhythmic patterns and dynamic markings.

Handwritten musical score for the first system, consisting of four staves. The notation includes treble clefs, a key signature of one sharp (F#), and a 3/4 time signature. The music features a variety of note values, including eighth and sixteenth notes, and rests. The first staff begins with a treble clef and a key signature of one sharp. The second staff has a treble clef and a key signature of one sharp. The third staff has a treble clef and a key signature of one sharp. The fourth staff has a bass clef and a key signature of one sharp.

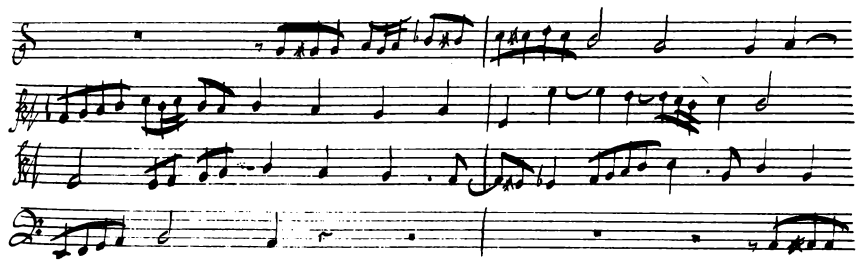
Handwritten musical score for the second system, consisting of four staves. The notation includes treble clefs, a key signature of one sharp (F#), and a 3/4 time signature. The music features a variety of note values, including eighth and sixteenth notes, and rests. The first staff begins with a treble clef and a key signature of one sharp. The second staff has a treble clef and a key signature of one sharp. The third staff has a treble clef and a key signature of one sharp. The fourth staff has a bass clef and a key signature of one sharp.



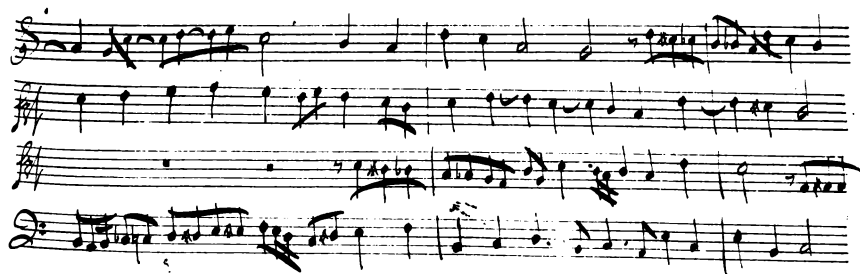
Handwritten musical score system 1, consisting of four staves. The top staff is in treble clef, the second and third are in alto clef, and the bottom is in bass clef. The music features a complex melodic line in the top staff with many beamed notes and slurs, and a more rhythmic accompaniment in the lower staves.



Handwritten musical score system 2, consisting of four staves. The top staff is in treble clef, the second and third are in alto clef, and the bottom is in bass clef. This system continues the musical piece with similar notation to the first system, including complex melodic passages and rhythmic accompaniment.



Handwritten musical score system 1, consisting of four staves. The top staff begins with a treble clef and a common time signature. The music features a variety of note values, including eighth and sixteenth notes, and rests. The notation is dense and includes many accidentals.



Handwritten musical score system 2, consisting of four staves. The top staff begins with a treble clef and a common time signature. The music continues with complex rhythmic patterns and numerous accidentals. The bottom staff features a bass clef.

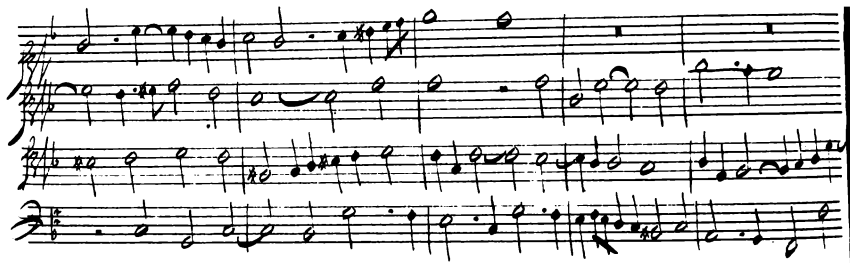
Handwritten musical notation on four staves. The notation includes various note values and rests. The right side of the score is heavily obscured by large, dark scribbles. Small 'm' markings are present below the notes on the first three staves. The bottom staff includes the handwritten text 'aria. p.'.

Four empty musical staves, each consisting of five horizontal lines, arranged vertically.

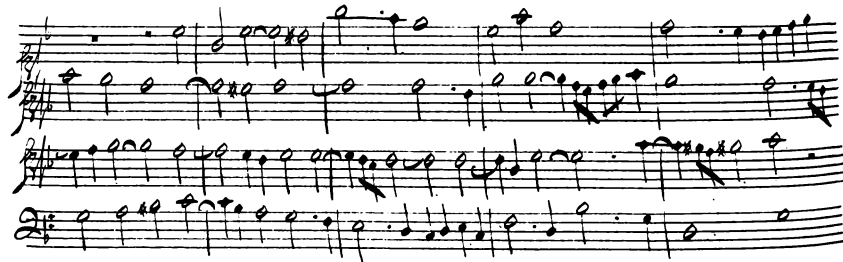
Ricercar - r.

Handwritten musical score for Ricercar - r. The score consists of four staves. The first two staves are in treble clef, and the last two are in bass clef. The time signature is common time (C). The notation includes various rhythmic values such as quarter notes, eighth notes, and sixteenth notes, along with rests and accidentals. The word "Ricercar - r." is written in a cursive hand on the left side of the first staff.

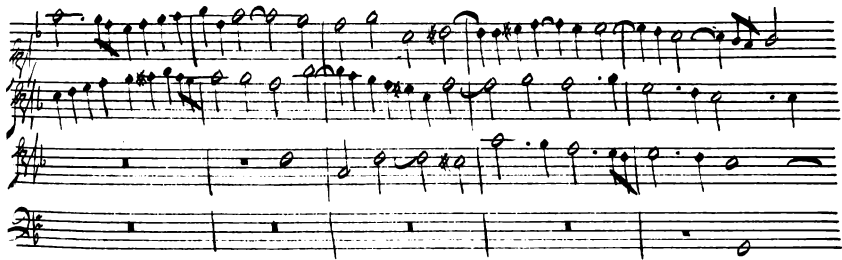
Continuation of the handwritten musical score for Ricercar - r. The score consists of four staves. The first two staves are in treble clef, and the last two are in bass clef. The time signature is common time (C). The notation includes various rhythmic values such as quarter notes, eighth notes, and sixteenth notes, along with rests and accidentals. The word "Ricercar - r." is written in a cursive hand on the left side of the first staff.



Handwritten musical score system 1, consisting of four staves. The notation includes various note values (quarter, eighth, and sixteenth notes), rests, and dynamic markings such as *mf* and *f*. The system concludes with a double bar line.



Handwritten musical score system 2, consisting of four staves. The notation includes various note values, rests, and dynamic markings such as *f* and *mf*. The system concludes with a double bar line.



The first system of the handwritten musical score consists of four staves. The top staff is in treble clef and contains a melodic line with eighth and sixteenth notes, some beamed together, and several rests. The second staff is also in treble clef and features a similar melodic line with more complex rhythmic patterns, including sixteenth-note runs. The third staff is in treble clef and contains a series of notes, some with stems pointing downwards, and several whole rests. The bottom staff is in bass clef and contains a series of notes, some with stems pointing upwards, and several whole rests.

The second system of the handwritten musical score also consists of four staves. The top staff is in treble clef and contains a melodic line with eighth and sixteenth notes, some beamed together, and several rests. The second staff is also in treble clef and features a similar melodic line with more complex rhythmic patterns, including sixteenth-note runs. The third staff is in treble clef and contains a series of notes, some with stems pointing downwards, and several whole rests. The bottom staff is in bass clef and contains a series of notes, some with stems pointing upwards, and several whole rests.

The first system of the handwritten musical score consists of four staves. The top staff begins with a treble clef and contains a series of notes, including a half note and several quarter notes. The second staff starts with a treble clef and features a mix of quarter and eighth notes, with some notes beamed together. The third staff begins with a treble clef and shows a sequence of eighth notes, some with stems pointing down. The bottom staff starts with a bass clef and contains a few notes, including a half note and a quarter note, with some rests.

The second system of the handwritten musical score also consists of four staves. The top staff begins with a treble clef and contains a series of notes, including a half note and several quarter notes. The second staff starts with a treble clef and features a mix of quarter and eighth notes, with some notes beamed together. The third staff begins with a treble clef and shows a sequence of eighth notes, some with stems pointing down. The bottom staff starts with a bass clef and contains a few notes, including a half note and a quarter note, with some rests.

Handwritten musical score for the first system, consisting of four staves. The top staff is in treble clef, the second and third are in treble clef with a key signature of one sharp (F#), and the bottom staff is in bass clef with a 2/4 time signature. The music is written in a fluid, expressive style with various note values, rests, and dynamic markings.

Handwritten musical score for the second system, continuing the piece with four staves in the same notation as the first system. The music continues with similar rhythmic patterns and melodic lines, ending with a double bar line.

Handwritten musical score for the first system, consisting of four staves. The notation includes various rhythmic values such as eighth and sixteenth notes, as well as rests. The first staff features a melodic line with frequent sixteenth-note runs. The second staff contains a more rhythmic accompaniment with dotted notes and eighth-note patterns. The third and fourth staves provide a bass line with a mix of quarter and eighth notes, including some chromatic movement.

Handwritten musical score for the second system, consisting of four staves. This system continues the musical ideas from the first. The first staff shows a melodic line with a prominent eighth-note pattern. The second staff features a complex rhythmic accompaniment with many sixteenth notes. The third and fourth staves provide a bass line with a mix of quarter and eighth notes, including some chromatic movement.

Ricarcar. r.

The first system of the handwritten musical score consists of four staves. The top two staves are in treble clef, and the bottom two are in bass clef. The time signature is common time (C). The notation includes various note values such as quarter, eighth, and sixteenth notes, as well as rests and accidentals. The word "Ricarcar. r." is written in a cursive hand on the left side of the first staff.

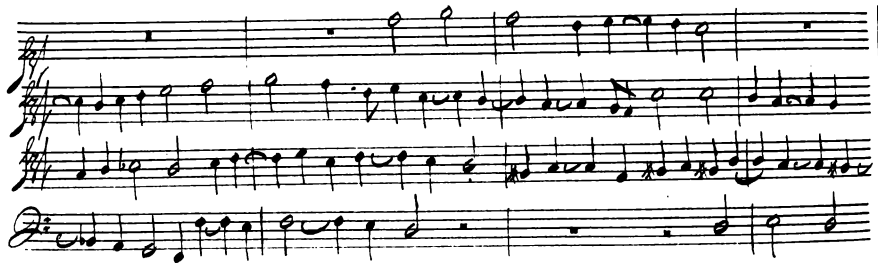
The second system of the handwritten musical score also consists of four staves, with the top two in treble clef and the bottom two in bass clef. The time signature is common time (C). The notation continues with various note values, rests, and accidentals, maintaining the same musical style as the first system.

Handwritten musical score for the first system, consisting of four staves. The top staff uses a treble clef, the second and third staves use alto clefs, and the bottom staff uses a bass clef. The music is written in a common time signature (C) and includes various note values such as quarter, eighth, and half notes, along with rests and dynamic markings like *ff* and *ffuo*.

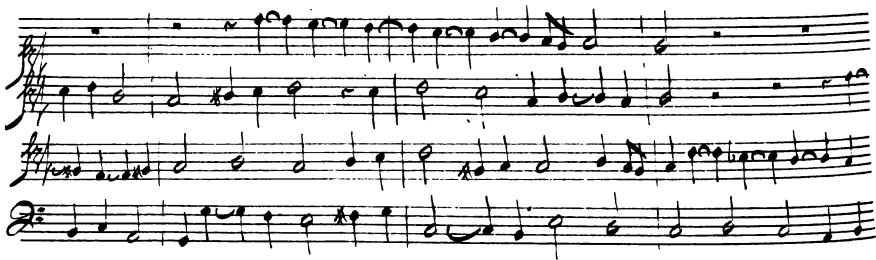
Handwritten musical score for the second system, continuing the piece with four staves. The notation follows the same clef structure as the first system. The music continues with similar rhythmic patterns and includes dynamic markings such as *ff* and *ffuo*.

The first system of the handwritten musical score consists of four staves. The top two staves are in treble clef, and the bottom two are in bass clef. The music is written in a single system with a common time signature. The notation includes various note values such as quarter, eighth, and sixteenth notes, as well as rests and ties. The first staff begins with a treble clef and a key signature of one sharp (F#). The second staff continues the melody with similar note values. The third staff provides a harmonic accompaniment with chords and single notes. The fourth staff, in bass clef, provides a bass line with a mix of quarter and eighth notes.

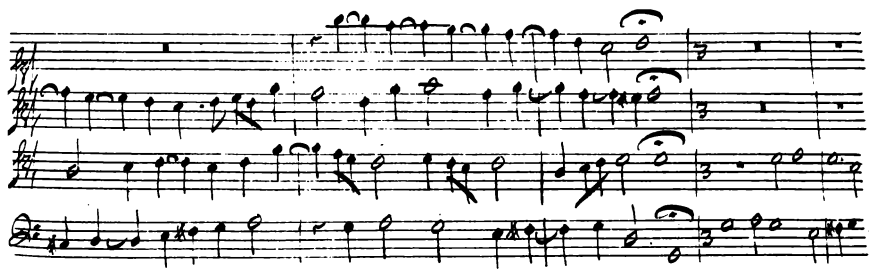
The second system of the handwritten musical score also consists of four staves, continuing the piece from the first system. It maintains the same clef arrangement (treble and bass). The notation is dense, featuring many sixteenth and thirty-second notes, particularly in the upper staves, indicating a more complex or rhythmic section. The bass line continues with steady quarter notes. The overall style is that of a personal musical sketch or a student's composition.



Handwritten musical score system 1, consisting of four staves. The top staff is a vocal line with a treble clef, starting with a whole rest followed by a series of notes. The second and third staves are piano accompaniment with treble clefs, featuring a rhythmic pattern of eighth and sixteenth notes. The bottom staff is a bass line with a bass clef, providing a harmonic foundation with quarter and eighth notes.



Handwritten musical score system 2, consisting of four staves. The top staff is a vocal line with a treble clef, containing a melodic phrase with various note values. The second and third staves are piano accompaniment with treble clefs, mirroring the rhythmic patterns of the first system. The bottom staff is a bass line with a bass clef, continuing the harmonic progression.



Handwritten musical score system 1, consisting of four staves. The top staff is a vocal line with a treble clef, featuring a melodic line with many slurs and ties. The second and third staves are piano accompaniment in treble clef, with rhythmic patterns and chords. The bottom staff is a bass line in bass clef, providing harmonic support. The system concludes with a double bar line and a repeat sign.



Handwritten musical score system 2, consisting of four staves. The top staff is a vocal line in treble clef, showing a more melodic and sustained line. The second and third staves are piano accompaniment in treble clef, with a steady rhythmic accompaniment. The bottom staff is a bass line in bass clef, continuing the harmonic structure. The system ends with a double bar line.

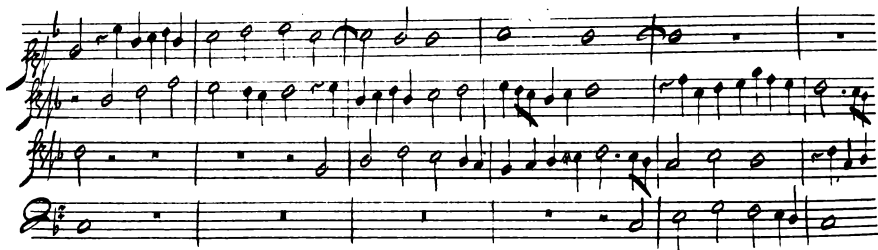
Handwritten musical score, first system. It consists of four staves. The top staff is in treble clef with a key signature of one sharp (F#). The second and third staves are in treble clef with a key signature of one sharp. The bottom staff is in bass clef with a key signature of one sharp. The music is written in a fluid, handwritten style, featuring various note values including quarter, eighth, and sixteenth notes, as well as rests.

Handwritten musical score, second system. It consists of four staves. The top staff is in treble clef with a key signature of one sharp. The second and third staves are in treble clef with a key signature of one sharp. The bottom staff is in bass clef with a key signature of one sharp. The music is written in a fluid, handwritten style. The right side of the system is heavily scribbled over with dark ink, obscuring the original notation. There are some faint markings and the word "prima" visible in the bottom staff.

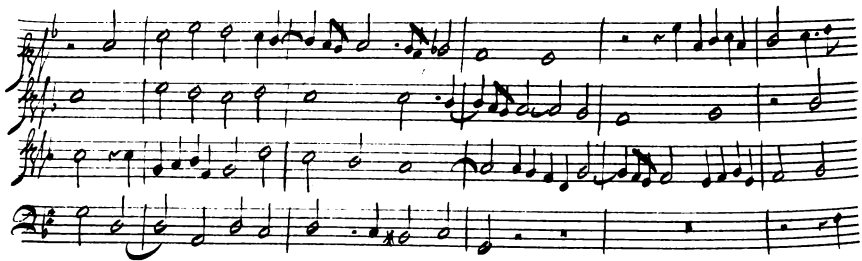
Ricercar - s.

The first system of the handwritten musical score consists of four staves. The top staff is in G major (one sharp) and common time (C), featuring a melodic line with eighth and sixteenth notes. The second staff is in G major and common time, containing mostly whole and half rests. The third staff is in G major and common time, with a melodic line similar to the first staff. The fourth staff is in D minor (two flats) and common time, containing mostly whole and half rests.

The second system of the handwritten musical score consists of four staves. The top staff is in G major and common time, with a melodic line. The second staff is in G major and common time, with a melodic line. The third staff is in G major and common time, with a melodic line. The fourth staff is in D minor and common time, with a melodic line.



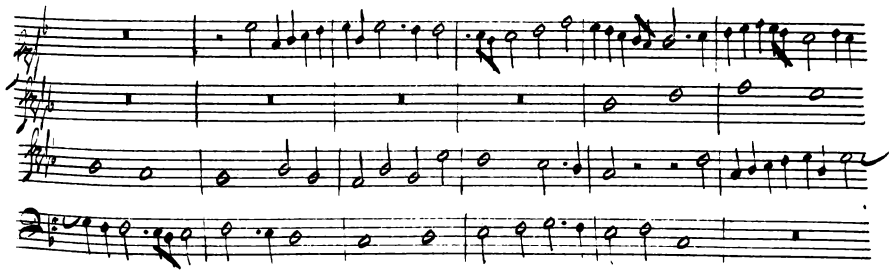
Handwritten musical score system 1, consisting of four staves. The top staff is in treble clef with a key signature of one flat (B-flat). The second and third staves are in treble clef with a key signature of two flats (B-flat and E-flat). The bottom staff is in bass clef with a key signature of two flats (B-flat and E-flat). The music features a variety of note values including quarter, eighth, and sixteenth notes, as well as rests.



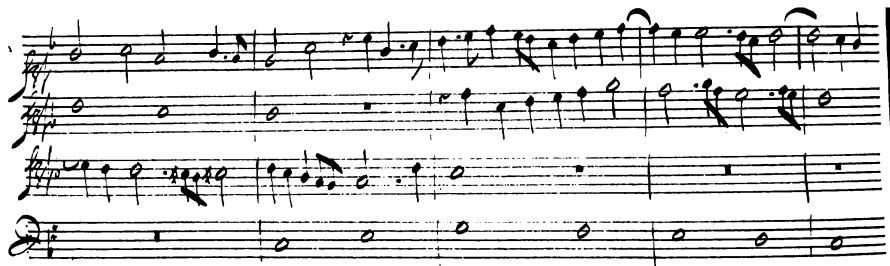
Handwritten musical score system 2, consisting of four staves. The top staff is in treble clef with a key signature of one flat (B-flat). The second and third staves are in treble clef with a key signature of two flats (B-flat and E-flat). The bottom staff is in bass clef with a key signature of two flats (B-flat and E-flat). The music continues with similar notation to the first system, including various note values and rests.



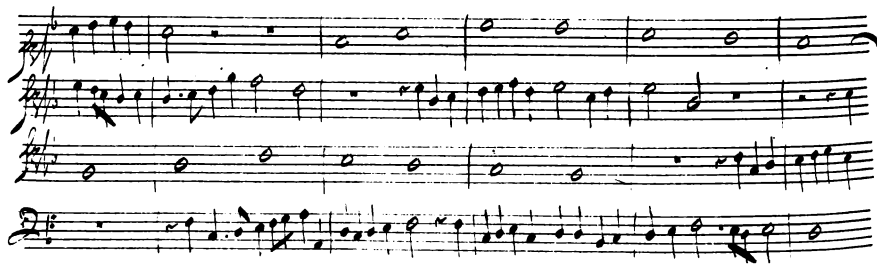
Handwritten musical score system 1, consisting of four staves. The notation includes various note values (quarter, eighth, and sixteenth notes), rests, and dynamic markings such as *mf* and *f*. The music is written in a common time signature.



Handwritten musical score system 2, consisting of four staves. The notation includes various note values (quarter, eighth, and sixteenth notes), rests, and dynamic markings such as *mf* and *f*. The music is written in a common time signature.



Handwritten musical score system 1, consisting of four staves. The top staff is a treble clef with a key signature of one flat (B-flat) and a 4/4 time signature. It contains a melodic line with eighth and sixteenth notes, including some slurs and ties. The second staff is an alto clef with a key signature of one flat and a 4/4 time signature, containing a line of whole notes. The third staff is a bass clef with a key signature of one flat and a 4/4 time signature, containing a line of whole notes. The bottom staff is a bass clef with a key signature of one flat and a 4/4 time signature, containing a line of whole notes.



Handwritten musical score system 2, consisting of four staves. The top staff is a treble clef with a key signature of one flat and a 4/4 time signature, containing a melodic line with eighth and sixteenth notes. The second staff is an alto clef with a key signature of one flat and a 4/4 time signature, containing a line of whole notes. The third staff is a bass clef with a key signature of one flat and a 4/4 time signature, containing a line of whole notes. The bottom staff is a bass clef with a key signature of one flat and a 4/4 time signature, containing a line of whole notes.

The first system of the handwritten musical score consists of four staves. The top staff uses a treble clef and contains a series of half notes with upward-pointing stems, each topped with a slur and a fermata. The second and third staves use treble clefs and contain a sequence of eighth notes, with some notes beamed together. The bottom staff uses a bass clef and contains a sequence of eighth notes, also with some beaming. The system concludes with a double bar line and a final fermata on a note in the top staff.

The second system of the handwritten musical score also consists of four staves. The top staff uses a treble clef and begins with a whole rest, followed by a series of eighth notes. The second and third staves use treble clefs and contain a sequence of eighth notes, with some beaming. The bottom staff uses a bass clef and contains a sequence of eighth notes, also with some beaming. The system concludes with a double bar line and a final fermata on a note in the top staff.

Handwritten musical score for the first system, consisting of four staves. The top staff uses a treble clef and contains a melodic line with eighth and sixteenth notes. The second and third staves use a treble clef and contain accompaniment with eighth and sixteenth notes. The bottom staff uses a bass clef and contains a bass line with dotted notes and eighth notes. The music is written in a common time signature.

Handwritten musical score for the second system, consisting of four staves. The top staff uses a treble clef and contains a melodic line with quarter and eighth notes. The second and third staves use a treble clef and contain accompaniment with quarter and eighth notes. The bottom staff uses a bass clef and contains a bass line with quarter and eighth notes. The music is written in a common time signature.

Handwritten musical score for the first system, consisting of four staves. The top staff is in treble clef with a key signature of one flat (B-flat) and a common time signature. The second and third staves are in treble clef with a key signature of one sharp (F-sharp). The bottom staff is in bass clef with a key signature of one flat (B-flat). The notation includes various note values, rests, and dynamic markings.

Handwritten musical score for the second system, consisting of four staves. The top staff is in treble clef with a key signature of one flat (B-flat) and a common time signature. The second and third staves are in treble clef with a key signature of one sharp (F-sharp). The bottom staff is in bass clef with a key signature of one flat (B-flat). The notation includes various note values, rests, and dynamic markings.



Handwritten musical score system 1, consisting of four staves. The top staff is a vocal line with a treble clef and a key signature of one flat. The second and third staves are piano accompaniment for the right hand, with treble clefs and a key signature of one flat. The bottom staff is piano accompaniment for the left hand, with a bass clef and a key signature of one flat. The music is written in a common time signature. The first staff contains a melody of quarter and eighth notes. The second and third staves feature a rhythmic accompaniment with eighth and sixteenth notes. The bottom staff provides a bass line with quarter and eighth notes.



Handwritten musical score system 2, consisting of four staves. The top staff is a vocal line with a treble clef and a key signature of one flat. The second and third staves are piano accompaniment for the right hand, with treble clefs and a key signature of one flat. The bottom staff is piano accompaniment for the left hand, with a bass clef and a key signature of one flat. The music is written in a common time signature. The first staff contains a melody of quarter and eighth notes. The second and third staves feature a rhythmic accompaniment with eighth and sixteenth notes. The bottom staff provides a bass line with quarter and eighth notes.

Handwritten musical score on four staves. The notation includes various note values, rests, and dynamic markings such as *mf* and *ppia*. The right side of the page is heavily obscured by a large, dark scribble.

Five empty musical staves, consisting of five sets of five-line staves, arranged vertically.

Ricercar *no. 1*

Handwritten musical score for Ricercar no. 1, first system. It consists of four staves. The top staff is in treble clef with a common time signature. The second and third staves are in alto clef with a common time signature. The bottom staff is in bass clef with a common time signature. The music is written in a historical style with various note values and rests.

Handwritten musical score for Ricercar no. 1, second system. It consists of four staves, continuing the notation from the first system. The clefs and time signature remain consistent with the first system.

Handwritten musical score for the first system, consisting of four staves. The top staff uses a treble clef, the second and third staves use alto clefs, and the bottom staff uses a bass clef. The music is written in a common time signature (C) and includes various note values such as quarter, eighth, and sixteenth notes, along with rests and dynamic markings.

Handwritten musical score for the second system, consisting of four staves. The top staff uses a treble clef, the second and third staves use alto clefs, and the bottom staff uses a bass clef. The music continues with various note values and rests, maintaining the common time signature.

The first system of the handwritten musical score consists of four staves. The top staff is in treble clef with a key signature of one sharp (F#). The second staff is in treble clef with a key signature of two sharps (F# and C#). The third staff is in treble clef with a key signature of two sharps (F# and C#). The bottom staff is in bass clef with a key signature of two sharps (F# and C#). The music is written in a common time signature (C). The notation includes various note values such as quarter, eighth, and sixteenth notes, as well as rests and ties.

The second system of the handwritten musical score consists of four staves, continuing the piece from the first system. The staves are arranged in the same order: treble clef (one sharp), treble clef (two sharps), treble clef (two sharps), and bass clef (two sharps). The notation continues with various rhythmic patterns and melodic lines, including some notes with fermatas.

The first system of the handwritten musical score consists of four staves. The top staff is in treble clef and contains a sequence of notes: a whole rest, a dotted quarter note, a half note, a quarter note, a quarter note, a quarter note, and a dotted quarter note. The second staff is in treble clef and begins with a whole rest, followed by a dotted quarter note, a quarter note, and a quarter note, then a series of eighth notes. The third staff is in treble clef and contains a series of eighth notes. The bottom staff is in bass clef and contains a series of eighth notes.

The second system of the handwritten musical score consists of four staves. The top staff is in treble clef and contains a sequence of notes: a whole rest, a dotted quarter note, a quarter note, a quarter note, a quarter note, a quarter note, a dotted quarter note, and a quarter note. The second staff is in treble clef and begins with a dotted quarter note, a quarter note, a quarter note, a quarter note, a quarter note, a quarter note, a quarter note, and a quarter note. The third staff is in treble clef and contains a series of eighth notes. The bottom staff is in bass clef and contains a series of eighth notes.

Handwritten musical score for the first system, consisting of four staves. The top staff is in treble clef, the second and third staves are in alto clef, and the bottom staff is in bass clef. The music is written in a single system with various note values, rests, and phrasing slurs.

Handwritten musical score for the second system, consisting of four staves. The top staff is in treble clef, the second and third staves are in alto clef, and the bottom staff is in bass clef. The music continues from the first system with similar notation and phrasing.

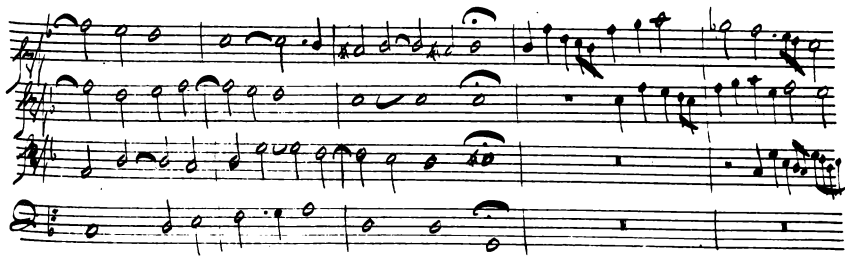
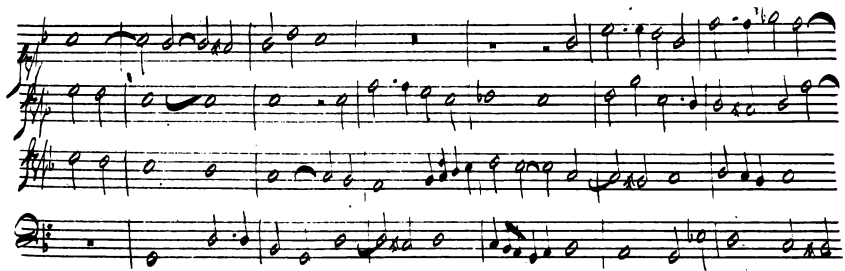
Handwritten musical score for the first system, consisting of four staves. The notation includes various rhythmic values such as eighth and sixteenth notes, and rests. The music is written in a standard staff format with a treble clef on the top staff and a bass clef on the bottom staff.

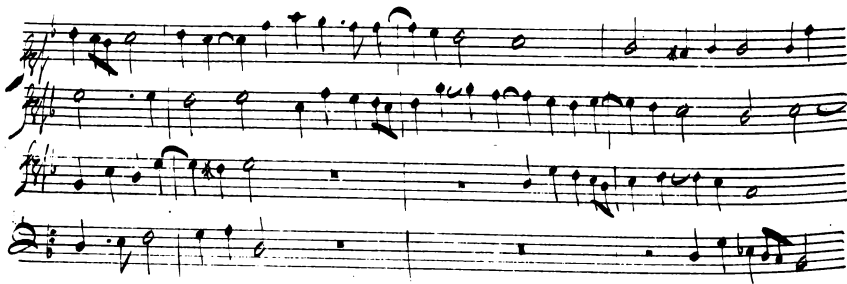
Handwritten musical score for the second system, featuring four staves. The notation includes various rhythmic values and notes. On the right side of the system, there are several large, stylized scribbles that appear to be decorative or expressive markings, possibly representing a specific performance technique or a section of the score that has been heavily revised or crossed out.

Ricercar. s.

The first system of the handwritten musical score consists of four staves. The top staff is in treble clef with a key signature of one flat (B-flat) and a common time signature (C). It contains a melodic line with various note values, including quarter, eighth, and sixteenth notes, and rests. The second staff is in alto clef with a common time signature (C) and contains a similar melodic line. The third staff is in bass clef with a common time signature (C) and contains a bass line with rests and notes. The fourth staff is in bass clef with a common time signature (C) and contains a bass line with rests and notes. The word "Ricercar. s." is written in a cursive hand on the left side of the second staff.

The second system of the handwritten musical score consists of four staves. The top staff is in treble clef with a key signature of one flat (B-flat) and a common time signature (C). It contains a melodic line with various note values, including quarter, eighth, and sixteenth notes, and rests. The second staff is in alto clef with a common time signature (C) and contains a similar melodic line. The third staff is in bass clef with a common time signature (C) and contains a bass line with rests and notes. The fourth staff is in bass clef with a common time signature (C) and contains a bass line with rests and notes.





The first system of the handwritten musical score consists of four staves. The top two staves are in treble clef, and the bottom two are in bass clef. The music is written in a single system with a common time signature. The notation includes quarter notes, eighth notes, and sixteenth notes, often grouped with beams. There are several measures with whole rests. The first staff begins with a treble clef and a key signature of one flat. The second staff has a treble clef and a key signature of one flat. The third staff has a treble clef and a key signature of one flat. The fourth staff has a bass clef and a key signature of one flat. The music concludes with a double bar line.

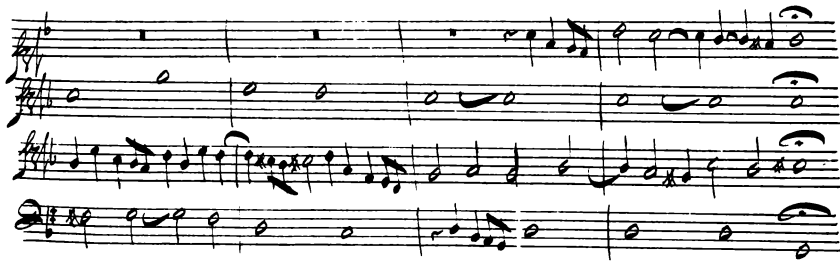
The second system of the handwritten musical score consists of four staves. The top two staves are in treble clef, and the bottom two are in bass clef. The music is written in a single system with a common time signature. The notation includes quarter notes, eighth notes, and sixteenth notes, often grouped with beams. There are several measures with whole rests. The first staff begins with a treble clef and a key signature of one flat. The second staff has a treble clef and a key signature of one flat. The third staff has a treble clef and a key signature of one flat. The fourth staff has a bass clef and a key signature of one flat. The music concludes with a double bar line.

Handwritten musical score system 1, consisting of four staves. The top staff is in treble clef with a key signature of one flat (Bb) and a common time signature (C). The second and third staves are in alto clef with a key signature of one flat (Bb) and a common time signature (C). The bottom staff is in bass clef with a key signature of one flat (Bb) and a common time signature (C). The music features a variety of note values including quarter, eighth, and sixteenth notes, as well as rests and dynamic markings.

Handwritten musical score system 2, consisting of four staves. The top staff is in treble clef with a key signature of one flat (Bb) and a common time signature (C). The second and third staves are in alto clef with a key signature of one flat (Bb) and a common time signature (C). The bottom staff is in bass clef with a key signature of one flat (Bb) and a common time signature (C). The music continues with similar notation to the first system, including various note values and rests.



Handwritten musical score system 1, consisting of four staves. The top staff is in treble clef with a key signature of one flat (B-flat). The second and third staves are in treble clef with a key signature of two flats (B-flat and E-flat). The bottom staff is in bass clef with a key signature of two flats (B-flat and E-flat). The music features a variety of note values including quarter, eighth, and sixteenth notes, as well as rests and ties.



Handwritten musical score system 2, consisting of four staves. The top staff is in treble clef with a key signature of one flat (B-flat). The second and third staves are in treble clef with a key signature of two flats (B-flat and E-flat). The bottom staff is in bass clef with a key signature of two flats (B-flat and E-flat). The music continues with similar notation to the first system, including quarter, eighth, and sixteenth notes, rests, and ties.

The first system of the handwritten musical score consists of four staves. The top staff is in treble clef and contains a melodic line with eighth and sixteenth notes, including some slurs and ties. The second staff is also in treble clef and contains a similar melodic line. The third staff is in treble clef and contains a more rhythmic line with eighth notes. The bottom staff is in bass clef and contains a line with mostly whole and half notes. The system concludes with a double bar line.

The second system of the handwritten musical score also consists of four staves. The top staff is in treble clef and features a melodic line that ends with a fermata. The second staff is in treble clef and contains a melodic line with some slurs. The third staff is in treble clef and contains a rhythmic line. The bottom staff is in bass clef and contains a line with mostly whole and half notes. The system concludes with a double bar line and a fermata over the final note of the top staff.

Ricercar .s.

This system contains the first four staves of the handwritten musical score. The word "Ricercar .s." is written in a cursive hand on the left side, spanning across the first three staves. Each staff begins with a treble clef, a key signature of one sharp (F#), and a common time signature (C). The notation includes various note values such as quarter, eighth, and sixteenth notes, as well as rests. The first two staves have a few notes, while the third and fourth staves contain more complex rhythmic patterns.

This system contains the next four staves of the handwritten musical score. The notation continues with various note values and rests. The first staff of this system features a prominent melodic line with a slur over a group of notes. The second staff continues with similar rhythmic patterns. The third and fourth staves show further development of the musical themes, with some notes beamed together and others held as longer durations.

Handwritten musical score for the first system, consisting of four staves. The top staff uses a treble clef and contains a melodic line with quarter, eighth, and sixteenth notes, including several accidentals (sharps and naturals). The second staff is a bass line with whole and half notes. The third staff continues the melodic line with quarter and eighth notes. The bottom staff is a bass line with quarter and eighth notes. The system concludes with a double bar line.

Handwritten musical score for the second system, consisting of four staves. The top staff uses a treble clef and contains a melodic line with quarter, eighth, and sixteenth notes, including several accidentals (sharps and naturals). The second staff is a bass line with quarter and eighth notes. The third staff continues the melodic line with quarter and eighth notes. The bottom staff is a bass line with quarter and eighth notes. The system concludes with a double bar line.

Handwritten musical score for the first system, consisting of four staves. The top two staves use treble clefs, and the bottom two use bass clefs. The notation includes quarter notes, eighth notes, and rests. The first staff begins with a treble clef and a key signature of one sharp (F#). The second staff continues the melody with a treble clef. The third staff features a treble clef and contains mostly quarter notes. The fourth staff uses a bass clef and contains mostly quarter notes. The system concludes with a double bar line.

Handwritten musical score for the second system, consisting of four staves. The top two staves use treble clefs, and the bottom two use bass clefs. The notation includes quarter notes, eighth notes, and rests. The first staff begins with a treble clef and a key signature of one sharp (F#). The second staff continues the melody with a treble clef. The third staff features a treble clef and contains mostly quarter notes. The fourth staff uses a bass clef and contains mostly quarter notes. The system concludes with a double bar line.

Handwritten musical score for the first system, consisting of four staves. The notation includes various note values (quarter, eighth, and sixteenth notes), rests, and slurs. The first staff begins with a treble clef and a key signature of one sharp (F#). The second and third staves use a different clef, likely an alto or tenor clef. The fourth staff uses a bass clef. The music is written in a fluid, handwritten style.

Handwritten musical score for the second system, continuing the notation from the first system. It consists of four staves with similar musical notations, including notes, rests, and slurs. The notation is consistent with the first system, maintaining the same clefs and key signature.

Handwritten musical score for the first system, consisting of four staves. The top two staves are in treble clef, and the bottom two are in bass clef. The notation includes various note values, rests, and slurs, with some notes marked with 'x' or 'y'.

Handwritten musical score for the second system, consisting of four staves. The top two staves are in treble clef, and the bottom two are in bass clef. The notation includes various note values, rests, and slurs, with some notes marked with 'x' or 'y'.

Handwritten musical score for guitar, first system. It consists of four staves. The top staff is the melody line, featuring a series of eighth and sixteenth notes with slurs. The second and third staves are for the fretting hand, showing chord voicings and fingerings. The bottom staff is for the bass line, with a few notes and rests. The notation is in black ink on white paper.

Handwritten musical score for guitar, second system. It consists of four staves. The notation includes notes, rests, and 'X' marks on the top staff. There are several corrections: a circled 'su' above the first staff, a circled 'su' above the second staff, a circled 'X su' above the third staff, and a circled 'su' above the fourth staff. A large, dense scribble of black ink covers the right side of the system, partially obscuring the staves. The word 'variazao' is written in cursive at the bottom right of the system.

