

Fasch, Johann Friedrich (1688-1758) BRD DS Mus.ms 302/1
Sinfonia/a/2 Violin/Viola/e/Basso./[Incipit]/Fasch./(G-dur)

Ms.ca.1740 (Graupner). 20 x 26 cm.

4 St.:vl 1,2,vla,b. je 2 Bl.

Alte Sign.: 3047.

Incipit vgl.autographe Partitur Mus.ms 300/2. Eine Partitur
von der Hand Graupners vgl.Mus.ms 299/1.

X
1

Landes-Bibliothek
Mus.
302
Bd. Nr. 1
Darmstadt

3047, II.
302, 2

Sinfonia N^o 2.

sol (8)

a

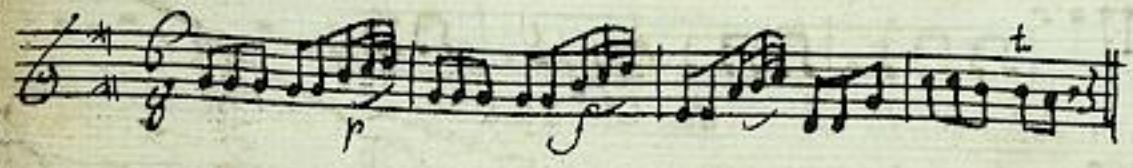
Violin

Viola

e

Basso

Fasch



4/1

Sinfonia.

Basso.

Handwritten musical score for Bassoon, Sinfonia. The score consists of eight staves of music. The first staff is marked "Fivace" and the last staff is marked "Allabreve". The music features various dynamics such as *p*, *f*, and *mp*. The notation includes treble clefs, a key signature of one sharp (F#), and a common time signature (C). The paper shows signs of age and wear, with some staining and a small mark in the upper right corner.

Grave. *p* *f* *p* *f* *p* *f* *p*

f *p* *f* *p* *p* *f* *p* *f*

p *f* *p*

Allabreve.

Allegretto.

Fine.

Handwritten musical score on aged paper, featuring multiple staves of music. The notation includes notes, rests, and dynamic markings such as *pp*, *f*, and *pp*. The word *Brevo.* is written in the first staff. The score concludes with a double bar line and a dense scribble of lines. The page number '7' is visible in the upper right corner.



Sinfonia

Skola.

The image shows a page of handwritten musical notation for a piece titled "Sinfonia" by "Skola". The music is written on seven staves, each with a treble clef and a key signature of one sharp (F#). The first staff begins with the tempo marking "Vivace." and includes dynamic markings such as *p*, *f*, *mp*, and *p*. The notation consists of rhythmic patterns of eighth and sixteenth notes. The piece concludes with a double bar line and the word "Adagio" written above it. Below the final staff, the word "Grave" is written in a larger, decorative script. The paper is aged and shows some staining.

Grave.

Handwritten musical score for the first system, featuring four staves with notes and rests. The tempo marking "Grave." is written at the beginning. Dynamics markings "p" are present throughout the system.

Abbrev.

Handwritten musical score for the second system, consisting of five empty staves. The tempo marking "Abbrev." is written in the center of the system.

Allegretto

Brevetto.

Bresto.

Handwritten musical score on seven staves. The notation includes treble clefs, a key signature of one sharp (F#), and a common time signature (C). The music consists of eighth and sixteenth notes, often beamed together. The first staff begins with the tempo marking "Bresto." and a dynamic marking "p". The score concludes with a double bar line and a decorative flourish on the seventh staff.

Sinfonia.

Violino 2.

Handwritten musical score for Violino 2, consisting of eight staves of music. The score begins with the tempo marking *Allegro vivace* and the dynamic marking *p*. The music is written in a treble clef with a key signature of one sharp (F#) and a 3/4 time signature. The notation includes various rhythmic patterns, such as eighth and sixteenth notes, and rests. Dynamic markings include *p*, *pp*, and *f*. There are also performance markings such as *tr* (trill) and *h* (hairpins). The score concludes with the instruction *Adagio* and the tempo marking *Grave*.

Grave.

Andante.

Handwritten musical score on a single page, featuring ten staves of music. The notation is in a historical style, likely from the 18th or 19th century. The first staff is marked *Allabreve*. The music consists of a single melodic line on a five-line staff. The notation includes various note values, rests, and dynamic markings such as *p* (piano) and *f* (forte). The piece concludes with a double bar line and the word *Fine* written in a decorative script. The page number *102* is written in the bottom right corner of the musical staff area.

Bresto.

Handwritten musical score on seven staves. The notation includes treble clefs, a key signature of one sharp (F#), and a time signature of 8/8. The music consists of eighth and sixteenth notes, often beamed together. Dynamics such as 'p' (piano) are indicated. The piece concludes with a double bar line and a dense scribble of vertical lines on the seventh staff.

Allabreve.

Presto.

Brevw.