



Organo

36.

Messa a due voci del Sig.^{ro}
Clari

Organo



Messa a n. Tenore Basso.

Organo 3

Largo
Klavi

Handwritten musical notation for the first system, featuring a treble clef, a key signature of two flats (B-flat and E-flat), and a common time signature. The notation includes a series of quarter and eighth notes with various accidentals. Below the staff, there are numerical figures: 7, 6, and 4.

Allegro
Klavi

Handwritten musical notation for the second system, continuing the piece with a treble clef and two flats. The tempo is marked 'Allegro'. The notation includes quarter and eighth notes with accidentals. Below the staff, there are numerical figures: 7, #6, 6, and #4.

Handwritten musical notation for the third system, featuring a treble clef and two flats. The notation includes quarter and eighth notes with accidentals. Below the staff, there are numerical figures: 4, 7, 6, 4, and 4.

Handwritten musical notation for the fourth system, featuring a treble clef and two flats. The notation includes quarter and eighth notes with accidentals. Below the staff, there are numerical figures: 3, 5, #, and 4 #.

Handwritten musical notation for the fifth system, featuring a treble clef and two flats. The notation includes quarter and eighth notes with accidentals. Below the staff, there are numerical figures: 6 and #.

Cristo

Handwritten musical notation for the sixth system, featuring a treble clef, a key signature of two flats, and a 3/2 time signature. The notation includes quarter and eighth notes with accidentals.

Handwritten musical notation for the seventh system, featuring a treble clef and two flats. The notation includes quarter and eighth notes with accidentals. Below the staff, there are numerical figures: 6, 6, 4, and 4.

Handwritten musical notation for the eighth system, featuring a treble clef and two flats. The notation includes quarter and eighth notes with accidentals. Below the staff, there is a numerical figure: 4.

Handwritten musical notation for the ninth system, featuring a treble clef and two flats. The notation includes quarter and eighth notes with accidentals. Below the staff, there are numerical figures: 7, 7, 4, 5, 6, 6, 4, and 3.

Musical staff with notes and fingerings (4, #).

Musical staff with notes and fingerings (6).

Musical staff with notes, fingerings (4, 3, 5, 6, 5, 4, 3), and a trill symbol.

Si replica il Lirio dall'Allegro.

Floria

Musical staff with notes, a 3/4 time signature, and fingerings (6, #, 4, 6, 5).

Musical staff with notes and fingerings (7, #, 4, 6, 5).

Musical staff with notes and a sharp sign.

Musical staff with notes and a sharp sign.

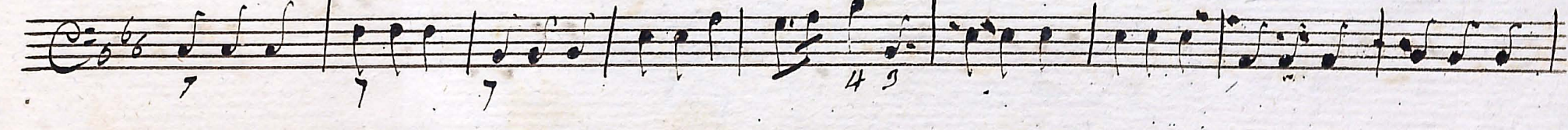
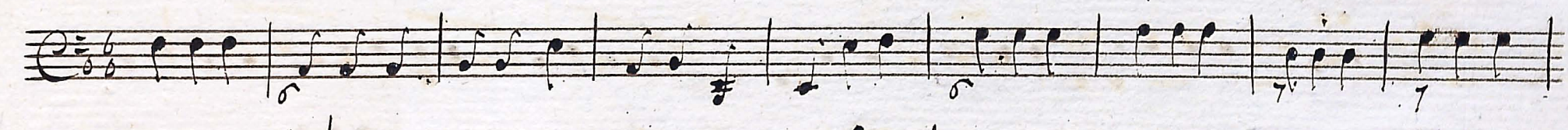
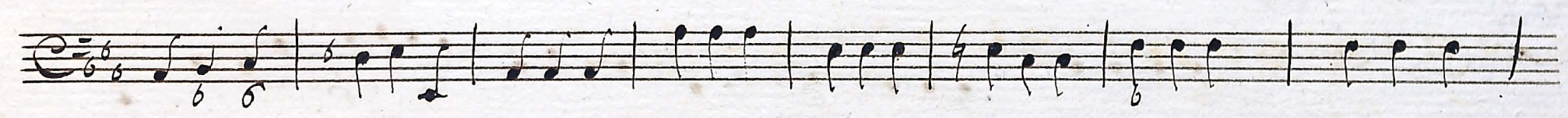
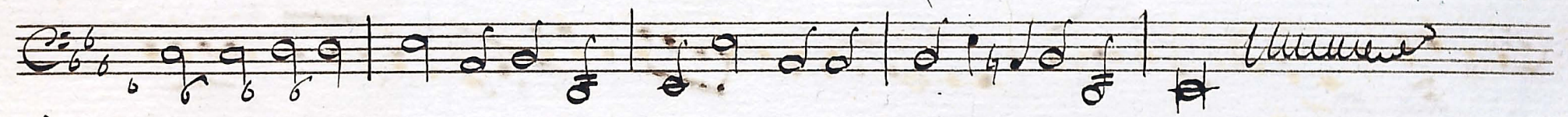
Musical staff with notes, fingerings (5, 6, 4, #, 6, 5, 5, 6, 4, 3, #), and a trill symbol.

*Et interras
Basso Solo*

Musical staff with notes, a 12/4 time signature, and fingerings (6, 5, 7, 4, 3, 4, 3, 4, 6, 6, 4, 6, 4, 4, 3).

Musical staff with notes and fingerings (6, 7, 6, 3, 4, 3, 5, 6, 5, 3, 6, 4, 6, 5, 3).

Laudamus
Tenore solo



Qui Tollis
Tutti Largo

Solo

Tutti

Quoniam Innoxio

Musical staff with notes and rests.

Musical staff with notes and rests.

Cum Sancto
Tutti Largo

Musical staff with notes and rests, including the marking *all:°*.

Musical staff with notes and rests.

Musical staff with notes and rests.

Musical staff with notes and rests.

Musical staff with notes and rests.

Musical staff with notes and rests.

Laud Deo