

# Suite B-Dur

[ FaWV K: B6 ]

J.F. Fasch

## Ouverture

Grave

Violino 1

5

8

12

16

20

26

32

39

45

50

60

3

3

3

3

3

3

3

5

6

6

tr

tr

3

p 3

[Allegro]

f 3

p

p

pp

f

p

f

p

f

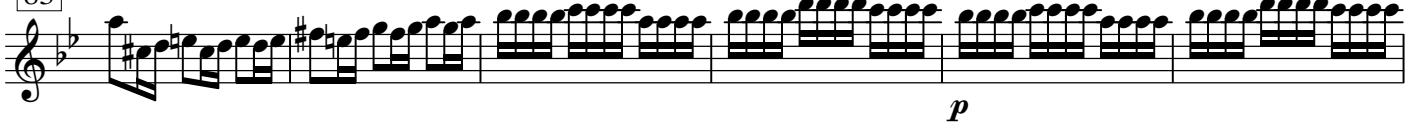
4

11

77



83



89



102



108

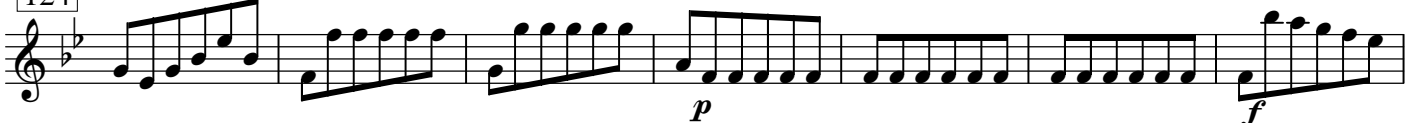


116

**Tutti**



124



131



137



144



150

**Grave**



157



161



# Air Largo

Musical score for "Air Largo" in B-flat major, 3/4 time. The score consists of six staves of music. It begins with a trill (tr) and dynamic markings of *p* and *f*. A triplet of eighth notes is marked with a '3'. Trills are indicated with [tr] throughout the piece. The piece concludes with a double bar line and repeat dots.

# Gavotte 1

Musical score for "Gavotte 1" in B-flat major, 3/4 time. The score consists of six staves of music. It begins with a treble clef and a key signature of two flats. The piece features a variety of rhythmic patterns and dynamics. A *f* dynamic marking is present at the beginning of the fifth staff. A five-measure rest is marked with a '5' and the word **Tutti**. The piece concludes with a double bar line and repeat dots.

Gavotte 2 tacet

# Air Andante

Musical score for "Air Andante" in 3/4 time, key of B-flat major. The score consists of six staves of music. The first staff begins with a measure containing an 8-measure rest. The second staff starts at measure 15. The third staff starts at measure 21 and includes a "Fine" marking, a 4-measure rest, and dynamic markings *p*, *pp*, and *f*. The fourth staff starts at measure 32 and includes a "Tutti" marking and a 4-measure rest. The fifth staff starts at measure 49 and includes a "Tutti" marking, a trill marking [*tr*], and a dynamic marking *p*. The sixth staff starts at measure 57 and includes a "Tutti" marking and a dynamic marking *f*. The seventh staff starts at measure 63 and includes "Tutti" markings, dynamic markings [*p*] and [*f*], and a 3-measure rest ending with a double bar line and repeat dots.

# Bouree 1

Musical score for "Bouree 1" in 3/4 time, key of B-flat major. The score consists of four staves of music. The first staff begins with dynamic markings *f*, *p*, *f*, *p*, *f*, *p*, *f*. The second staff starts at measure 9. The third staff starts at measure 17. The fourth staff starts at measure 25 and includes a "Tutti" marking and dynamic markings *f*, *p*, *f*, *p*. The fifth staff starts at measure 40 and includes dynamic markings *f*, *p*, *f*. The score ends with a double bar line and repeat dots.

# Bouree 2



Bouree 1 repetatur

# Menuet 1



Menuet 2 tacet