

# Sinfonia da "Il Re Pastore"

## Violino I

Friedrich der Große (1712-1786)

[1.] Allegro

4

8

11

13

16

19

21

23

26

28

31

Violino I score for Friedrich der Große - Il Re Pastore - Sinfonia - Rev: 1.0. The score is written in treble clef with a key signature of two sharps (F# and C#). The music is divided into measures, with measure numbers 35, 39, 42, 44, 47, 49, 51, 54, 58, 61, 64, 68, 71, and 74 indicated at the beginning of their respective staves. The score includes various musical notations such as trills (tr), dynamics (p, f), and articulation marks.

Measures 35-38: Trills on notes G4, A4, and B4.

Measures 39-41: *p* dynamics, slurs over notes.

Measures 42-43: *f* dynamics, sixteenth-note runs.

Measures 44-46: Trills on notes G4 and A4.

Measures 47-48: Slurs over notes, including a trill on G4.

Measures 49-50: Slurs over notes, including a trill on G4.

Measures 51-53: Trills on notes G4 and A4.

Measures 54-57: Trills on notes G4 and A4, ending with *p* dynamics.

Measures 58-60: Slurs over notes, including a trill on G4.

Measures 61-63: Trills on notes G4 and A4, ending with *f* dynamics.

Measures 64-67: Trills on notes G4 and A4.

Measures 68-70: Trills on notes G4 and A4.

Measures 71-73: Trills on notes G4 and A4.

Measures 74-76: Trills on notes G4 and A4.

77 *tr* *tr*

80 *tr* *tr* *tr*

83 *tr* *tr* *tr*

86 *tr* *tr*

89 *tr* *tr* *tr* *tr*

93 *p*

96 *f* *tr*

99 *tr* *tr*

102

104 *tr* *tr* *tr* *tr*

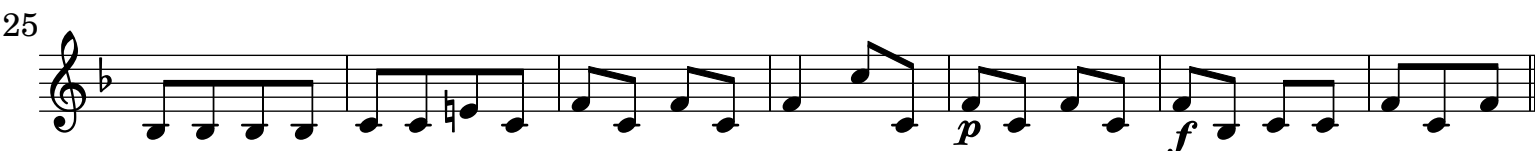
107 *tr* *tr*

110 *tr* *tr*

113

Detailed description: This image shows a page of a musical score for Violino I, measures 77 to 113. The music is written in treble clef with a key signature of two sharps (F# and C#). The score consists of ten staves. Measures 77-82 feature a rhythmic pattern of eighth notes with trills. Measures 83-88 continue with similar patterns, including some sixteenth-note runs. Measures 89-92 show a change in rhythm with quarter notes and trills. Measures 93-95 are marked *p* (piano) and feature a more melodic line with some grace notes. Measures 96-98 are marked *f* (forte) and include a trill. Measures 99-103 show a return to eighth-note patterns with trills. Measures 104-106 feature a sequence of trills. Measures 107-110 continue with eighth-note patterns and trills. Measure 111 has a trill. Measures 112-113 conclude the passage with a simple eighth-note melody.

## [2.] Andante



## [3.] Scherzando Allegro

