

Schreiner No. II.

1. Fach 2³ Lage

No. 1. Ouverture

Co. V. Oboi, Viola e
Basso

H. St.
de Sig. Ardespin



Musica	
1850	
n	1

Ex	23.
----	-----

Sächs.
Landes-
Bibl.

A

URFILM 16 / 1977 Nr. 218

Sächsische Landesbibliothek in Dresden

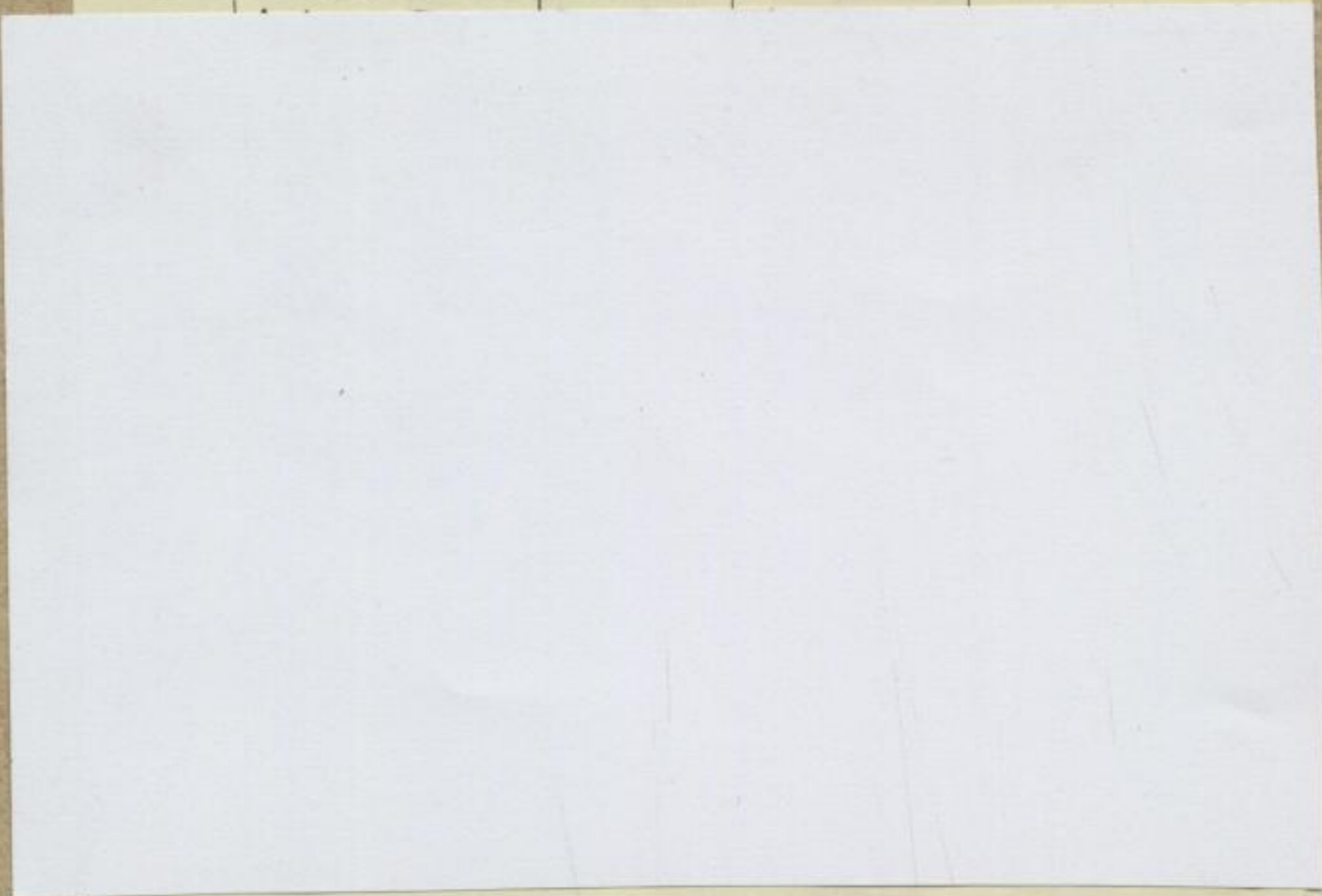
Handschrift Nr. *Ms. 1850*
NI

Die Benutzung dieser Handschrift ist nur unter der Bedingung gestattet, daß der Entleiher der hiesigen Bibliothek ein Stück seiner auf die Handschrift bezüglichen Veröffentlichung geschenkweise überläßt, sofern die Bibliotheksverwaltung nicht ausdrücklich auf die Überlassung verzichtet. Zum Durchzeichnen oder zur Herstellung von Lichtbildern ist besondere Erlaubnis einzuholen.

Beherrschende Auskünfte oder Hinweise auf der Bibliotheksverwaltung unbekanntes Veröffentlichungen über diese Handschrift werden dankbar entgegengenommen.

Benutzer der Handschrift

Datum	Name, Stand und Wohnung des Benutzers	Ort der Benutzung	Art der Benutzung (nur eingesehen? – ganz oder teilweise abgeschrieben? – verglichen? – abgelichtet?)	Zweck der Benutzung (ist Veröffentlichung beabsichtigt und in welcher Form?)



N^o 33.

Sonata

Sonata

~~Sonata~~ à 4 Violons

111

1. Hautbois, Basson

et

Basse Continue.

Mons: Ardespin.



2

Op. 23 (1-24)

7

11

24

Sonata. Wol. Violino 1. mo

Allegro $\frac{3}{4}$

adagio Allegro

forte piano

forte piano

forte piano

Tutti

Op. 23

Mus. 1850-N-1



2 3

Garotte

Flauto solo tacet || Garotte da Capo

Adagio $\frac{3}{4}$

9 10

1. Rigadon

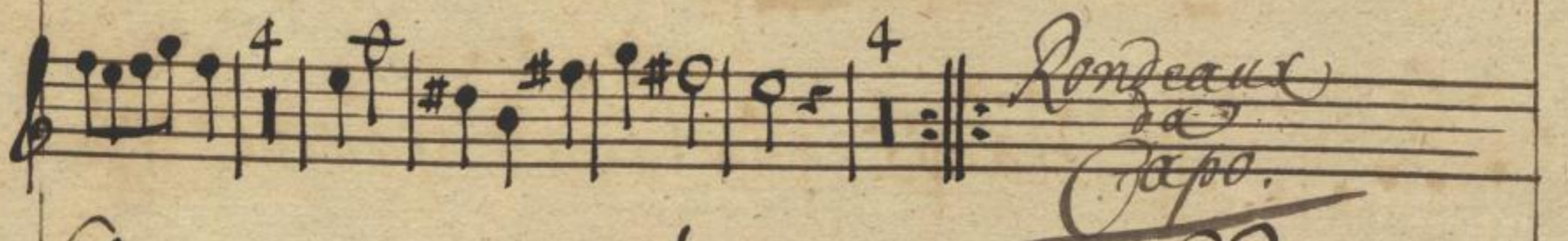
2. Rigadon

1. Rigadon da Capo

Rondeau 

 da Capo

Menuet 

 Rondeaux
da Capo.

Gigue 






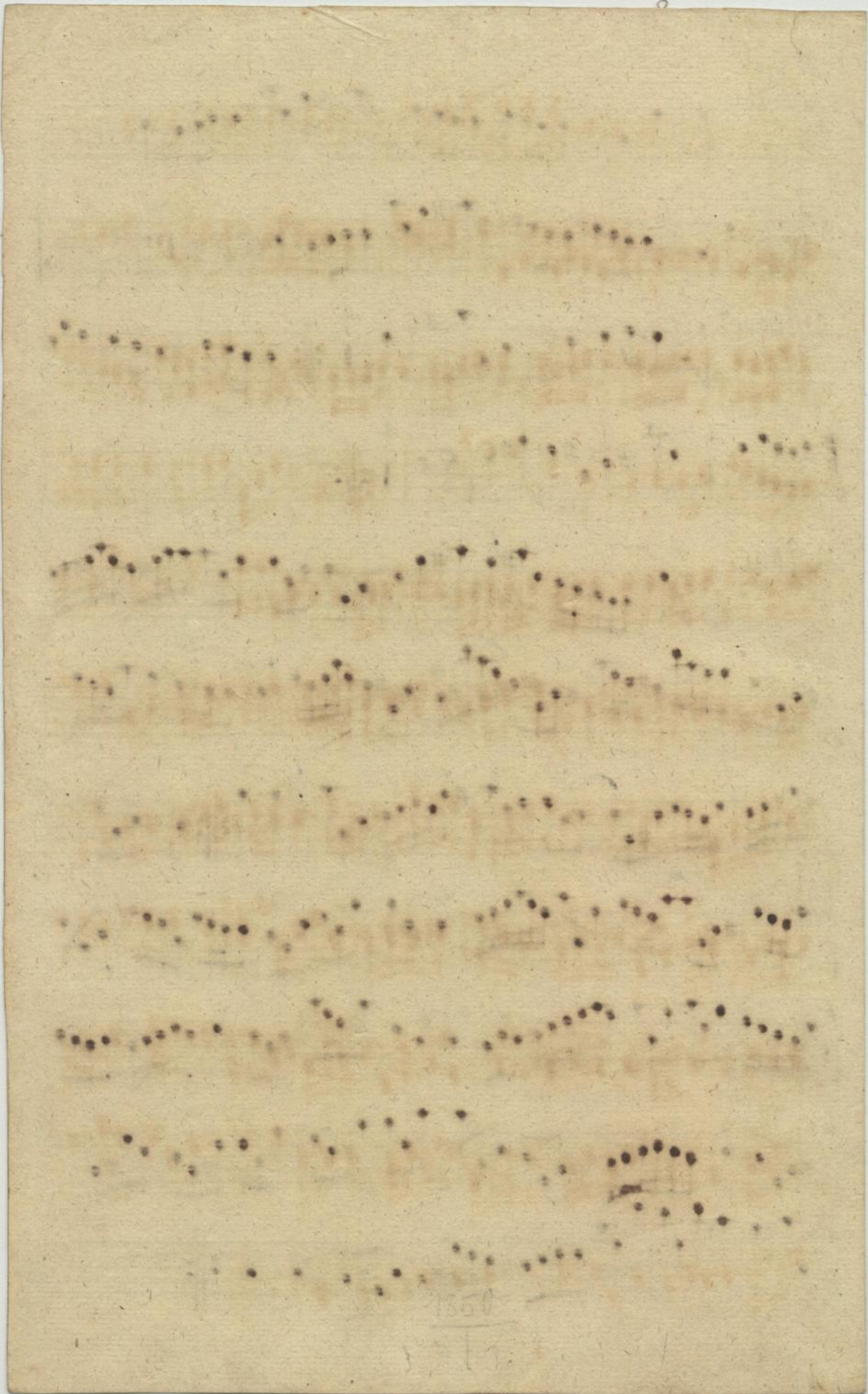








3 5



Conata

Violino 1^{mo}

Allegro

Handwritten musical score for Violino 1^{mo}, Op. 23, No. 1. The score consists of ten staves of music. It begins with the tempo marking 'Allegro' and a 3/4 time signature. The key signature has one sharp (F#). The score includes dynamic markings 'piano' and 'forte', and tempo changes to 'adagio' and back to 'allegro'. The piece concludes with a double bar line.

Op. 23
Mus. 1850-N-1

SLUB
Dresden X 6

Gavotte

Handwritten musical notation for the Gavotte section, consisting of three staves of music in treble clef with a key signature of one sharp (F#). The notation includes various note values, rests, and dynamic markings.

forte *Hautbois solo tacet* *Gavotte da Capo*

Adagio

Handwritten musical notation for the Adagio section, consisting of one staff of music in treble clef with a 3/4 time signature.

Handwritten musical notation for the first staff of the Rigadon section, starting with a 9-measure rest.

Handwritten musical notation for the second staff of the Rigadon section.

1. Rigadon

Handwritten musical notation for the first staff of the Rigadon section.

Handwritten musical notation for the second staff of the Rigadon section.

2. Rigadon

Handwritten musical notation for the first staff of the Rigadon section.

1. Rigadon
Da Capo

Handwritten musical notation for the first staff of the Rigadon section, ending with a double bar line.

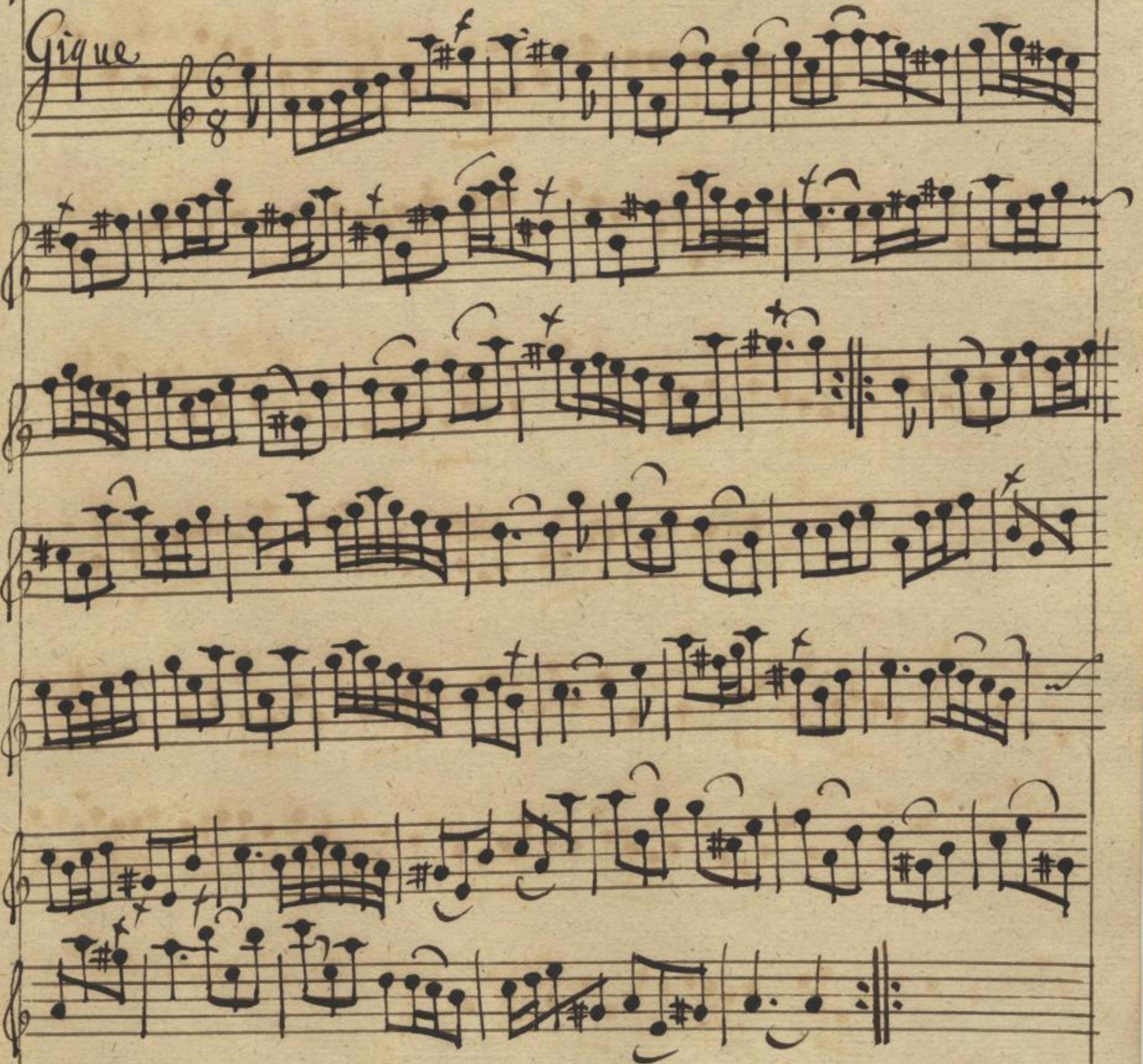
Rondeau

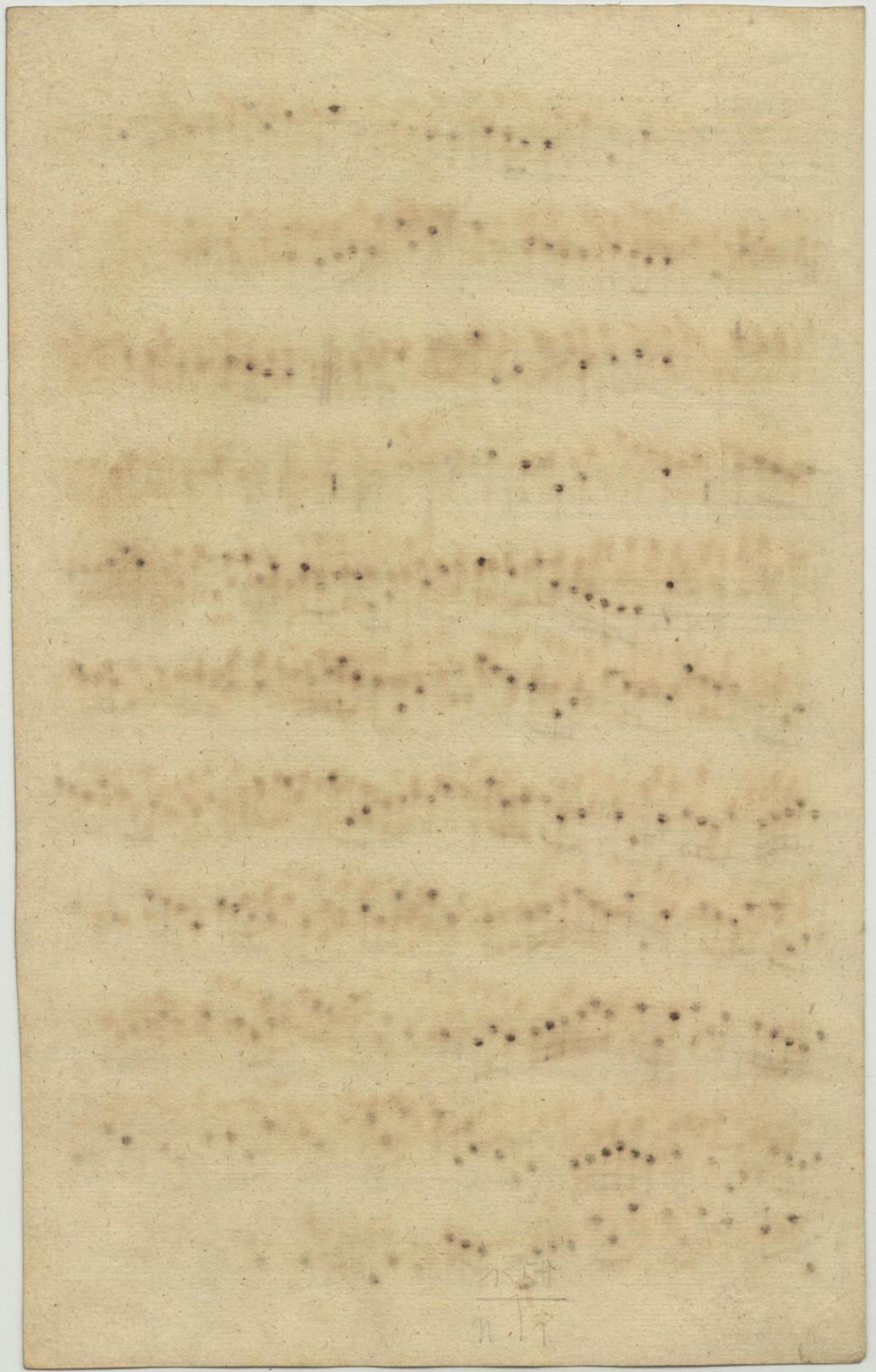


Menuet



Gigue





1854
N. 17

Conata

Violino 1. mo

Allegro



adagio

allegro



piano

forte



piano

forte



piano

forte



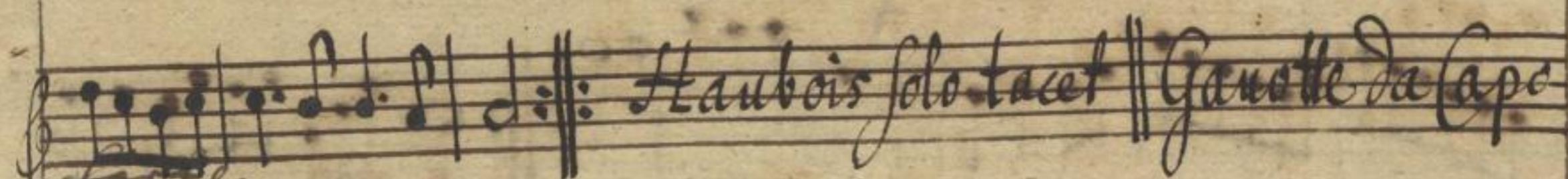
Cl. 23

Mus. 1850-N-1



6 9

Gavotte



Rondeau

Menuet

Rondeau da capo

[Faint, illegible handwritten text, possibly bleed-through from the reverse side of the page]

1857
11/11

Conata

Violino 1. mo

Allegro 3/4

Musical staff with notes and accidentals

Musical staff with notes and accidentals

Musical staff with notes and accidentals

adagio

allegro

Musical staff with notes and accidentals

Musical staff with notes and accidentals

Musical staff with notes and accidentals

piano

forte

Musical staff with notes and accidentals

piano

forte

Musical staff with notes and accidentals

Musical staff with notes and accidentals

piano

forte

Musical staff with notes and accidentals

4/6 #23

Mus. 1850-N-1

12



Gavotte

piano

forte
Adagio

Flauto solo tacet // Gavotte da Capo

1. Rigadon

2. Rigadon

1. Rigadon
da Capo

Rondeau

Handwritten musical notation for the first system of the 'Rondeau' piece, featuring a treble clef, a 3/4 time signature, and a key signature of one sharp (F#).

Handwritten musical notation for the second system of the 'Rondeau' piece, ending with the instruction 'da Capo'.

Menuet

Handwritten musical notation for the first system of the 'Menuet' piece, featuring a treble clef and a 3/4 time signature.

Handwritten musical notation for the second system of the 'Menuet' piece, including a repeat sign and the instruction 'Rondeau da Capo'.

Gigue

Handwritten musical notation for the first system of the 'Gigue' piece, featuring a treble clef and a 6/8 time signature.

Handwritten musical notation for the second system of the 'Gigue' piece.

Handwritten musical notation for the third system of the 'Gigue' piece.

Handwritten musical notation for the fourth system of the 'Gigue' piece.

Handwritten musical notation for the fifth system of the 'Gigue' piece.

Handwritten musical notation for the sixth system of the 'Gigue' piece.

Handwritten musical notation for the seventh system of the 'Gigue' piece, ending with a double bar line.

[The page contains extremely faint, illegible handwritten text, likely bleed-through from the reverse side of the paper.]

Conata

Haute Contre

Allegro

adagio *allegro*

piano *forte*

piano *forte*

piano

forte

Op. 25
Mus. 1850-N-1

72



Gavotte

piano

*Hautbois solo tacet
Gavotte da Capo*

Adagio

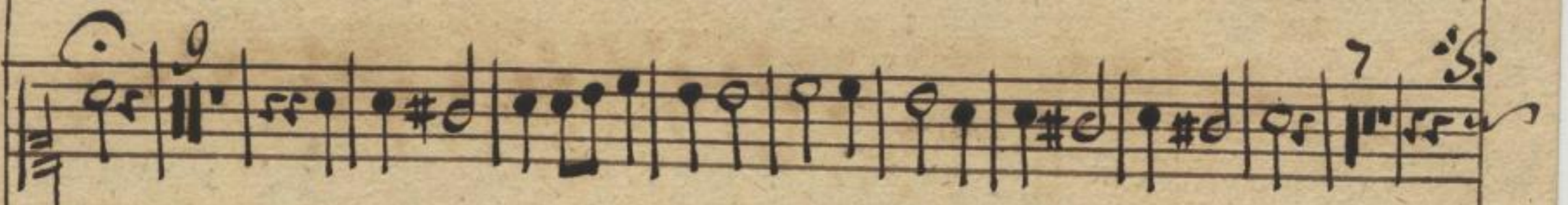
forte

1. Rigadon

2. Rigadon

1. Rigadon da Capo

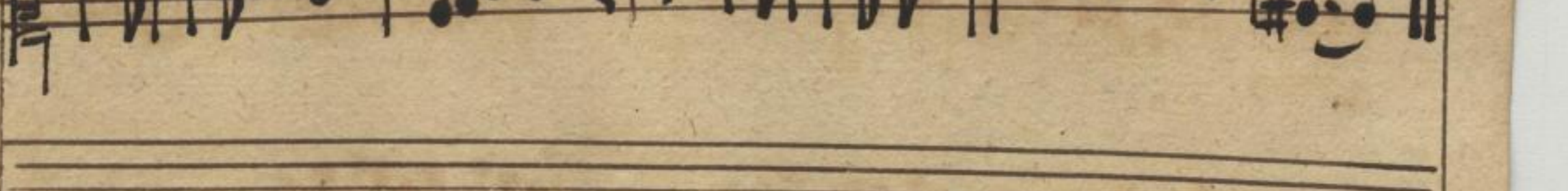
Rondeau . 5:



Menuet



Gigue



73

Handwritten musical notation on aged paper, featuring several staves of notes and rests. The notation is a form of early musical shorthand, possibly a type of tablature or shorthand notation used in the 16th or 17th century. The notes are represented by small black dots and vertical lines, arranged in horizontal rows. The paper shows signs of age, including discoloration and some stains.

Sonata

Taille

Allegro

adagio allegro

piano forte

piano forte

piano forte

piano forte

Gavotte

piano forte

Haubois solotauet // Gavotte da capo

C. F. B.

Mus. 1850-N-1



74 31

Adagio



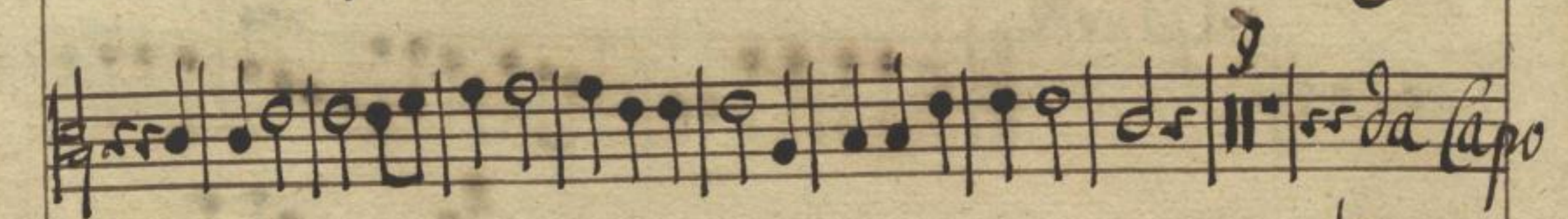
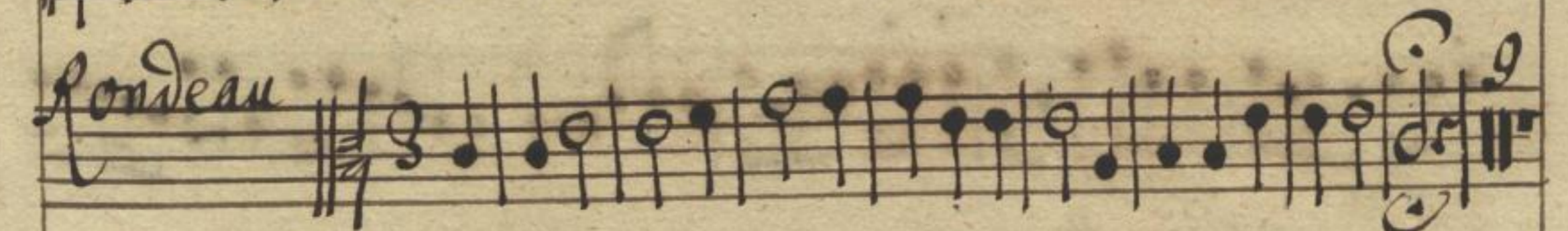
1. Rigadon



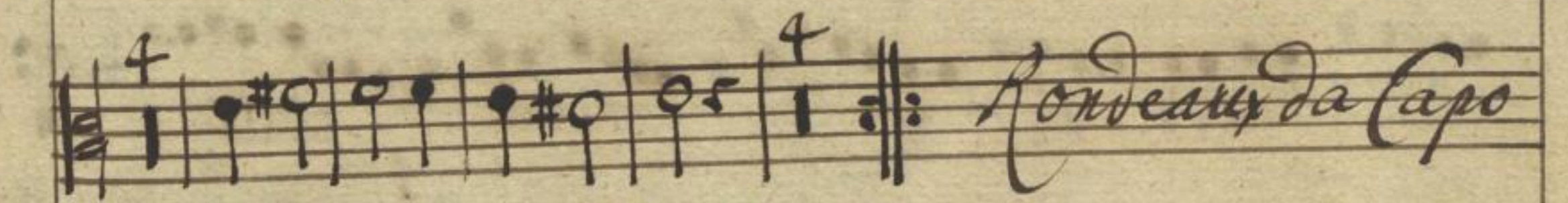
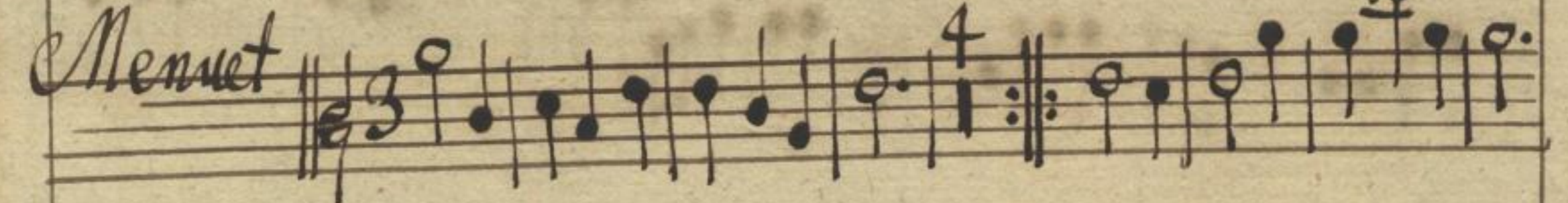
2. Rigadon



1. Rigadon da Capo



Menuet



Rondeau da Capo

Gigue

A handwritten musical score for a piece titled "Gigue". The score is written on six staves. The first staff begins with a treble clef, a key signature of one sharp (F#), and a time signature of 6/8. The music is composed of eighth and sixteenth notes, with some rests and accidentals. The notation is clear and legible, showing a rhythmic and melodic progression across the six staves. The paper is aged and shows some staining.

75

Handwritten text in a cursive script, possibly a list or account, consisting of several lines of entries. The text is faint and difficult to decipher due to the age and condition of the paper.

1830
11/9

Conata

Basse de Violon

Allegro

3/4

Handwritten musical notation for the first system of the 'Conata' section, featuring a treble clef and a 3/4 time signature.

Handwritten musical notation for the second system of the 'Conata' section.

adagio

Handwritten musical notation for the third system of the 'Conata' section, marked 'adagio'.

Allegro

Handwritten musical notation for the fourth system of the 'Conata' section, marked 'Allegro'.

piano forte

piano forte

Handwritten musical notation for the fifth system of the 'Conata' section, with dynamic markings 'piano forte'.

Handwritten musical notation for the sixth system of the 'Conata' section, with dynamic markings 'piano forte'.

piano forte

Gavotte

C

Handwritten musical notation for the first system of the 'Gavotte' section, marked 'C'.

Handwritten musical notation for the second system of the 'Gavotte' section, with dynamic markings 'piano forte'.

piano

forte

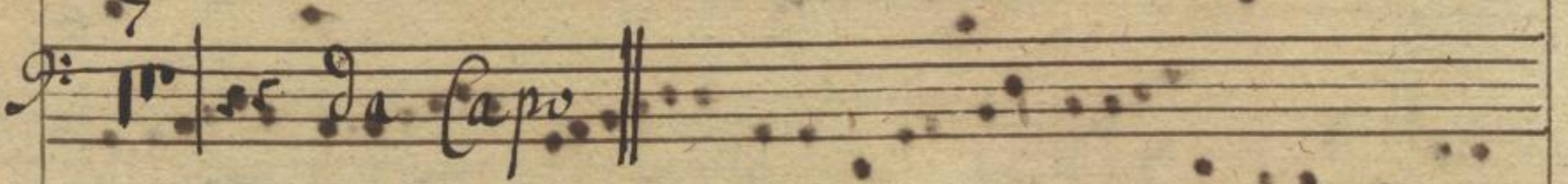
Haut: solo
tacet
Gavotte da capo

Mus. 1850-N-1



16 15

Adagio



Menuet

Handwritten musical notation for the first two staves. The first staff is a Minuet in 3/8 time, starting with a treble clef and a key signature of one sharp (F#). The second staff is a Rondeau da Capo in 4/4 time, also starting with a treble clef and a key signature of one sharp. Both pieces feature simple melodic lines with repeat signs.

Handwritten musical notation for the Gigue and the remainder of the Minuet and Rondeau da Capo. The Gigue is in 6/8 time, starting with a treble clef and a key signature of one sharp. The Minuet and Rondeau da Capo continue with more complex rhythmic patterns and melodic development.

1550
 1551
 1552
 1553
 1554
 1555
 1556
 1557
 1558
 1559
 1560
 1561
 1562
 1563
 1564
 1565
 1566
 1567
 1568
 1569
 1570
 1571
 1572
 1573
 1574
 1575
 1576
 1577
 1578
 1579
 1580
 1581
 1582
 1583
 1584
 1585
 1586
 1587
 1588
 1589
 1590
 1591
 1592
 1593
 1594
 1595
 1596
 1597
 1598
 1599
 1600

1550
 1551
 1552

Sonata

Basse de Violon

Allegro 3/4

adagio 3/4 *allegro* 3/4

piano forte

piano forte

piano forte

piano forte

Volti

C. 20/25
Mus. 1850-N-1



18

Gavotte

Handwritten musical notation for the Gavotte section, consisting of three staves of music in bass clef with a 3/4 time signature.

Handwritten musical notation for the Gavotte section, including a double bar line and the instruction *forte*.

Haut: solo facet
Gavotte da Capo

Handwritten musical notation for the Adagio section, starting with the tempo marking *Adagio* and a 3/4 time signature.

Handwritten musical notation for the Adagio section, including a double bar line and the number 10.

Handwritten musical notation for the Adagio section, including a key signature change to one sharp (F#) and a double bar line.

Handwritten musical notation for the 1. Rigadon section, starting with the tempo marking *1. Rigadon* and a 3/4 time signature.

Handwritten musical notation for the 1. Rigadon section, including a double bar line.

Handwritten musical notation for the 2. Rigadon section, starting with the tempo marking *2. Rigadon* and a 3/4 time signature.

Handwritten musical notation for the 1. Rigadon da Capo section, including a double bar line and the instruction *1. Rigadon da Capo*.

Rondeau

Handwritten musical notation for the first system of 'Rondeau'. It consists of two staves. The top staff is in treble clef with a 3/8 time signature. The bottom staff is in bass clef. The music features a series of eighth and sixteenth notes. A '9' is written above the first measure of the bottom staff, and a '7' is written above the first measure of the top staff. The system ends with a double bar line.

Muet

Handwritten musical notation for the second system of 'Muet'. It consists of two staves. The top staff is in treble clef with a 3/8 time signature. The bottom staff is in bass clef. The music features a series of eighth and sixteenth notes. A '4' is written above the first measure of the top staff. The system ends with a double bar line.

Gigue

Handwritten musical notation for the third system of 'Gigue'. It consists of two staves. The top staff is in treble clef with a 6/8 time signature. The bottom staff is in bass clef. The music features a series of eighth and sixteenth notes. A '4' is written above the first measure of the top staff. The system ends with a double bar line.

[Faint, illegible handwriting on aged paper]

1550
1717

Sonata

Cembalo.

Allegro 3/8

Handwritten musical score for the first part of a sonata. It consists of two staves, treble and bass clef. The music is in 3/8 time and begins with an 'Allegro' tempo. The score includes various notes, rests, and ornaments. A 'piano' dynamic marking is present. The piece concludes with a double bar line. The notation is dense and characteristic of 18th-century manuscript notation.

Adagio

Gavotte

Handwritten musical score for a Gavotte. It consists of two staves, treble and bass clef. The music is in 3/8 time. The score includes various notes, rests, and ornaments. A 'piano' dynamic marking is present, followed by a 'forte' dynamic marking and the instruction 'Volti subito'. The piece concludes with a double bar line. The notation is dense and characteristic of 18th-century manuscript notation.

piano forte
Volti subito

Mus. 1850-N-1



22
21

Haub. solo

A Japis

1. Rigadon

2. Rigadon

Rondeau

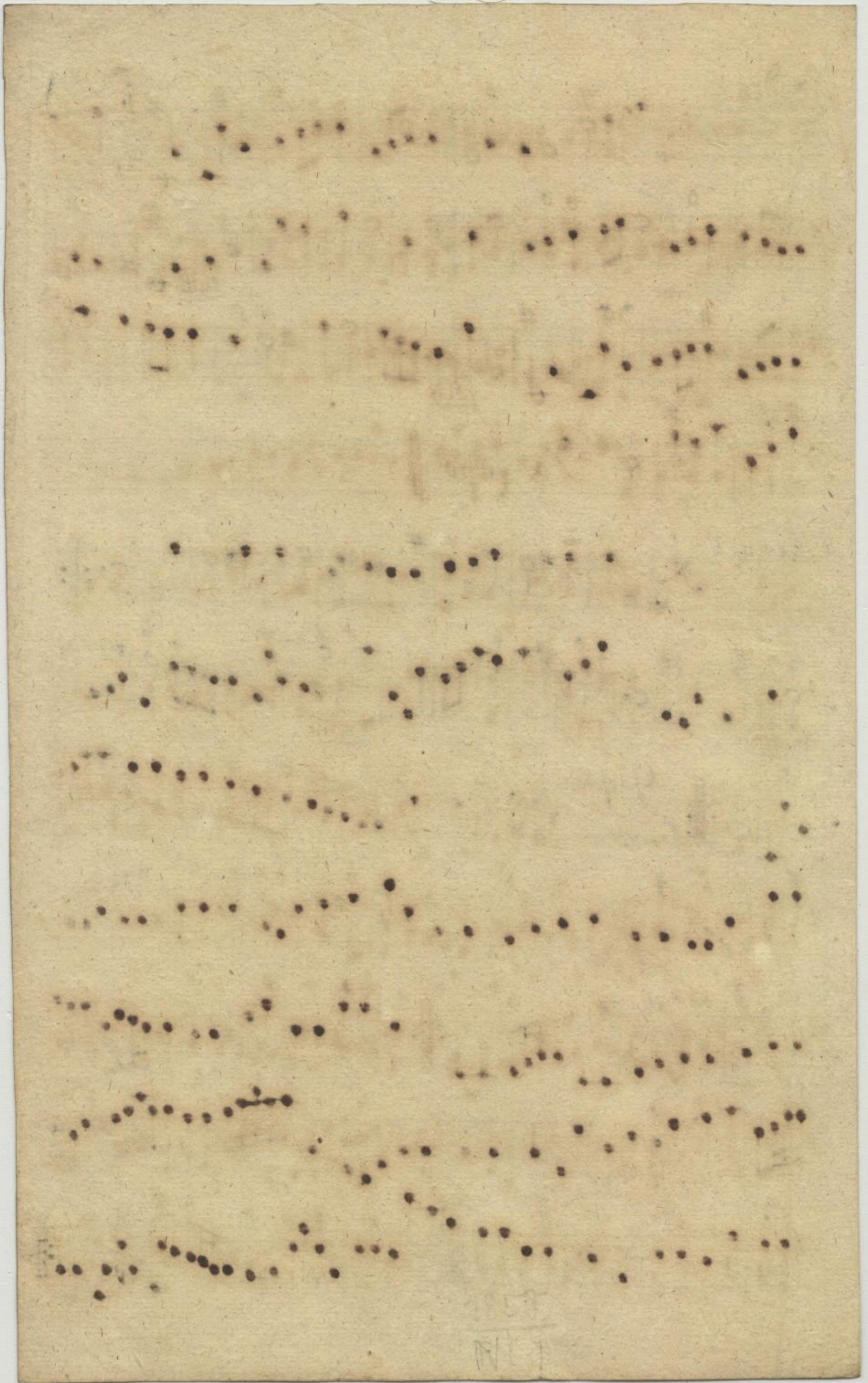
Handwritten musical score for 'Rondeau'. It consists of three systems of two staves each. The first system includes a treble clef, a 3/4 time signature, and a key signature of one sharp (F#). The music features various chords and melodic lines. The second system includes the word 'solo' written above the staff. The third system includes the word 'tutti' written below the staff and ends with 'da Capo' and a double bar line.

Menuet

Handwritten musical score for 'Menuet'. It consists of two systems of two staves each. The first system includes a treble clef, a 3/4 time signature, and a key signature of one sharp (F#). The music features various chords and melodic lines. The second system includes the word 'tutti' written below the staff and the word 'solo' written above the staff.

Gigue.

Handwritten musical score for 'Gigue'. It consists of four systems of two staves each. The first system includes a treble clef, a 6/8 time signature, and a key signature of one sharp (F#). The music features various chords and melodic lines. The second system includes the word 'tutti' written below the staff and the word 'solo' written above the staff. The third system includes the word 'Rondeau da Capo' written below the staff. The fourth system includes the word 'tutti' written below the staff and the word 'solo' written above the staff.



Sonata

Haubois.

Allegro

Handwritten musical score for Clarinet in B-flat, Sonata for Clarinet and Piano, Op. 25, No. 1. The score consists of 11 staves of music. It begins with a treble clef and a 3/4 time signature. The tempo is marked 'Allegro'. The key signature has one sharp (F#). The score includes dynamic markings such as 'piano' and 'forte', and tempo changes to 'adagio' and 'allegro'. The piece concludes with a double bar line.

Op. 25
Mus. 1850-N-1



70

Gavotte

Handwritten musical notation for the first system of a Gavotte, consisting of four staves. The first staff is the melody, and the following three are accompaniment. The key signature has one sharp (F#) and the time signature is 3/4. The music features various note values including eighth and sixteenth notes, and rests. There are some plus signs (+) above certain notes in the second and third staves.

piano

forte

Gavotte

Handwritten musical notation for the second system of a Gavotte, consisting of four staves. The first staff is the melody, and the following three are accompaniment. The key signature has one sharp (F#) and the time signature is 3/4. The music continues with similar rhythmic patterns. There are some plus signs (+) above notes in the second and third staves.

solo

1. Gavotte Da Capo ||

Adagio

Handwritten musical notation for the third system, labeled 'Adagio', consisting of four staves. The first staff is the melody, and the following three are accompaniment. The key signature has one sharp (F#) and the time signature is 3/4. The music is slower and features more complex rhythmic patterns, including triplets and slurs. There are some plus signs (+) above notes in the second and third staves.

tutti

1. Rigadon

2. Rigadon

1. Rigadon da Capo

Rondeau

Solo

tutti

Solo

Da Capo

Menuet

Solo

tutti

Solo

Rondeau da Capo

tutti

Solo

Volti

26

Gigue

Handwritten musical score for a Gigue, consisting of eight staves of music. The notation is in treble clef with a key signature of one sharp (F#) and a 3/8 time signature. The music features various note values, rests, and ornaments, typical of Baroque or Classical era dance music. The first staff begins with a treble clef, a 3/8 time signature, and a key signature of one sharp. The piece concludes with a double bar line and repeat dots at the end of the eighth staff.

Conata

Basfon

Allegro 3/8

1.

Adagio

Gavotte

piano *forte*
Volti subito

6 # 23
Mus. 1850-N-1



20
34

Haub. solo



*Gavotte
da capo*

Adagio



solo

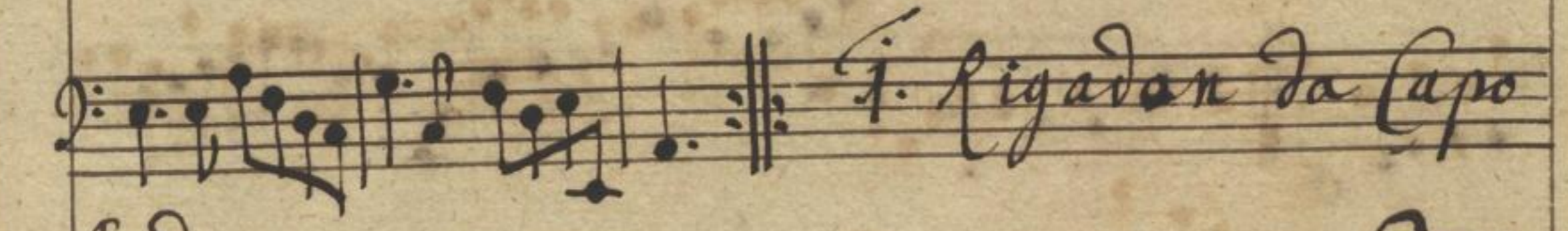


tutti



solo

tutti



1. Rigadon da Capo



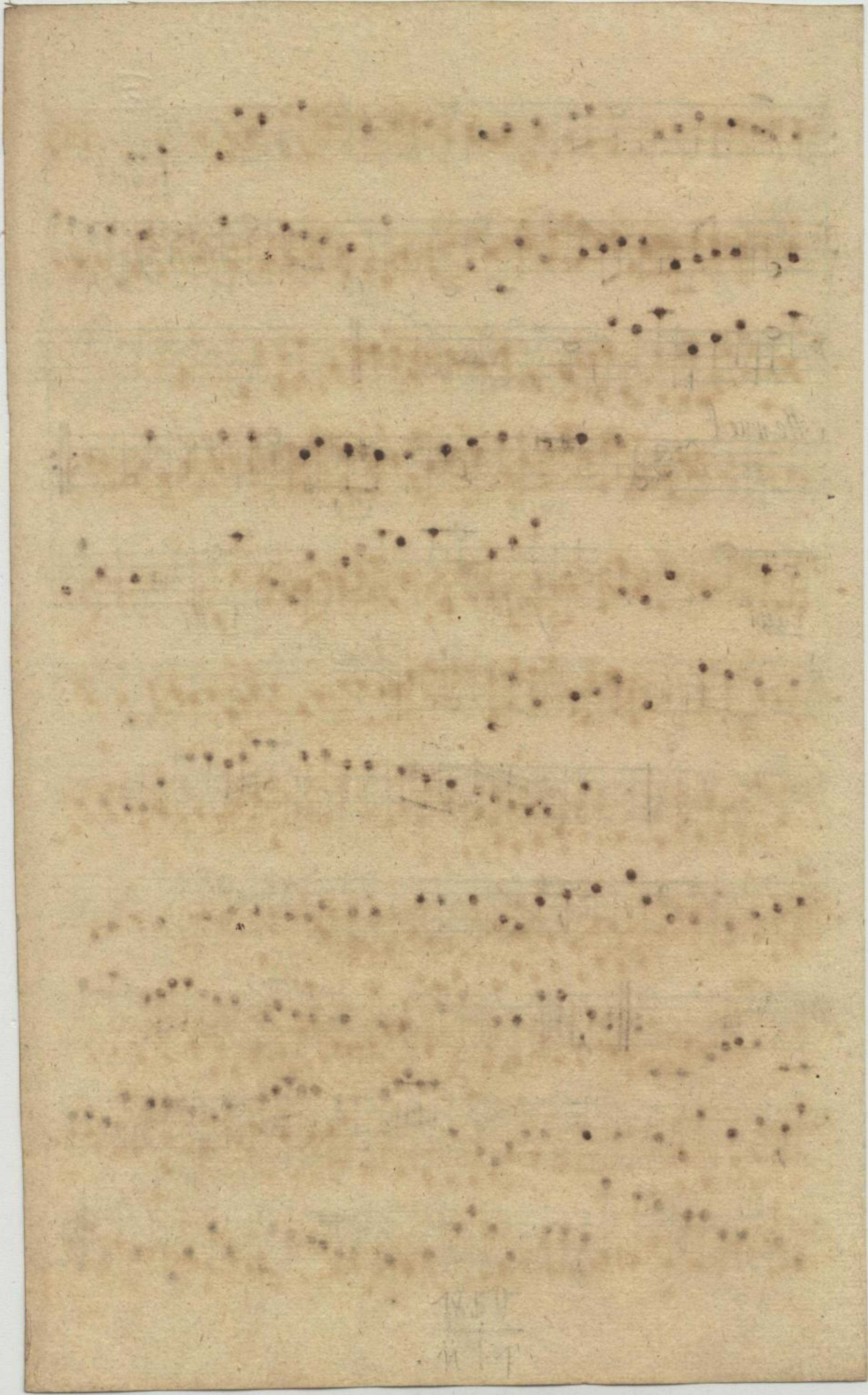
Londeau

solo

Handwritten musical notation on three staves. The top staff begins with a treble clef and a key signature of one sharp (F#). The middle staff has a bass clef. The bottom staff has a bass clef and contains the instruction "da Capo" with a double bar line. Performance markings include "tutti" above the first staff and "Solo" above the second staff.

Section titled "Menuet" in a 9/8 time signature. It consists of two staves. The top staff has a treble clef and a key signature of one sharp. The bottom staff has a bass clef. Performance markings include "Solo" above the top staff, "tutti" below the bottom staff at the beginning and end, and "Rondeau da Capo" written across the bottom staff.

Section titled "Gigue" in a 6/8 time signature. It consists of three staves. The top staff has a treble clef and a key signature of one sharp. The middle and bottom staves have bass clefs. The notation is dense with sixteenth and thirty-second notes.



Andante

Andante

Hautbois solo

Gaucho da capo

Finis

Rondeau

Rondeau

Menuet

Gigue

Rondeau da capo





Basse de Violon

stato

Quolette

Handwritten musical notation for the first section, consisting of six staves. The notation includes various rhythmic values, accidentals, and dynamic markings such as *forte* and *rit.* There are also some handwritten annotations in German, including "Nicht für Bass" and "in G-dur".

1. Rigadon

Handwritten musical notation for the first Rigadon, consisting of two staves.

2. Rigadon

Handwritten musical notation for the second Rigadon, consisting of two staves.

1. Rigadon da capo

Handwritten musical notation for the first Rigadon da capo, consisting of two staves.

Rondeau

Handwritten musical notation for the first part of the Rondau, consisting of two staves. It includes a 3/4 time signature and a repeat sign.

Mouet

Handwritten musical notation for the Mouet, consisting of two staves. It includes a 3/4 time signature and a 4-measure repeat sign.

Gigue

Handwritten musical notation for the Gigue, consisting of two staves. It includes a 3/8 time signature and various rhythmic patterns.

Handwritten musical notation for the second part of the Gigue, consisting of two staves.

Handwritten musical notation for the final part of the Gigue, consisting of two staves.