

Zwey-stimmiger
Sonaten und Suiten

Hamburg 1674

Dietrich Becker
1623 – 1679

Published by Johan Tufvesson.

Non-commercial copying welcome

Revision : 1.2

1. Sonata

Dietrich Becker
(1623-1679)

1. *Allegro*

Musical score for the first movement, *Allegro*, measures 1-21. The score is written in treble clef with a common time signature (C). It features a series of eighth and sixteenth notes, with some rests and accidentals. The tempo is marked *Allegro*.

Adagio piano

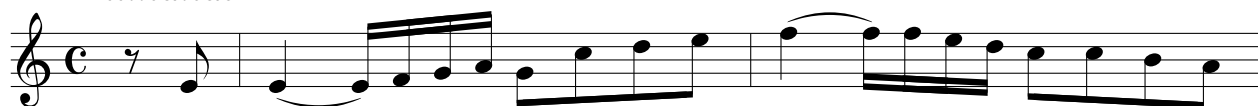
Musical score for the second movement, *Adagio piano*, measures 22-36. The score is written in treble clef. It features a slower tempo with a mix of quarter and eighth notes, and some rests. The tempo is marked *Adagio piano*.

Allegro

Musical score for the third movement, *Allegro*, measures 37-42. The score is written in treble clef with a 6/4 time signature. It features a series of quarter and eighth notes, with some rests and accidentals. The tempo is marked *Allegro*.

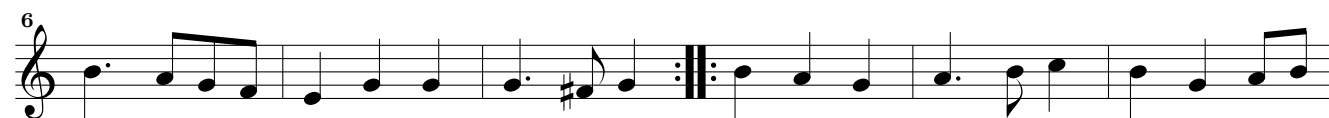
*Adagio**Allegro**Adagio*

Suite

2. *Allmandt*3. *Courant*



4. Sarabanda



5. Giguæ



6. Sonata

6. *Adagio*

7

12

17

*Allegro*₂

23

28

31

35

38

42

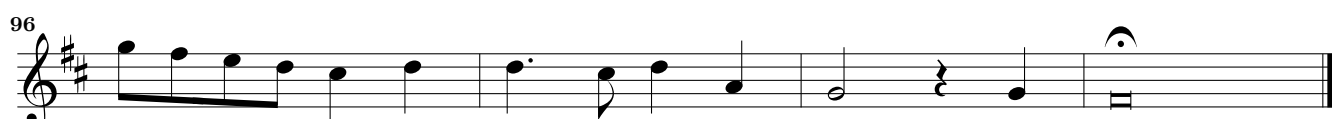
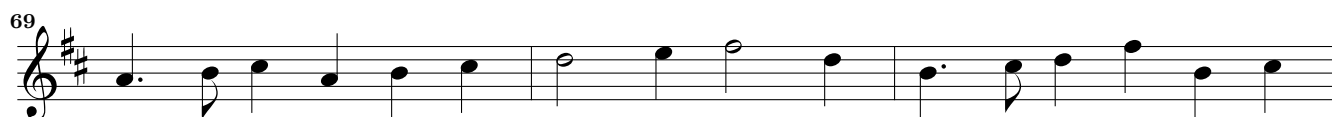
46

Adagio

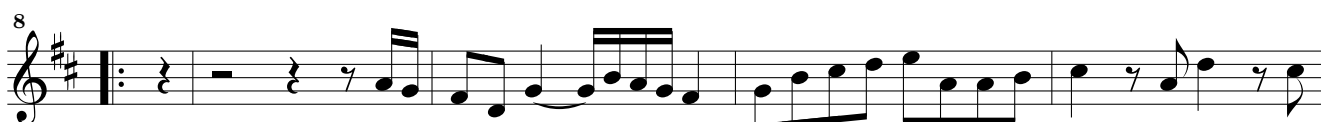
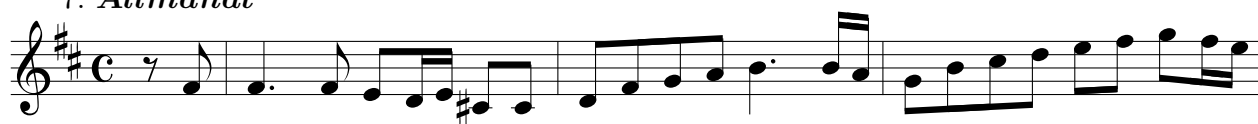
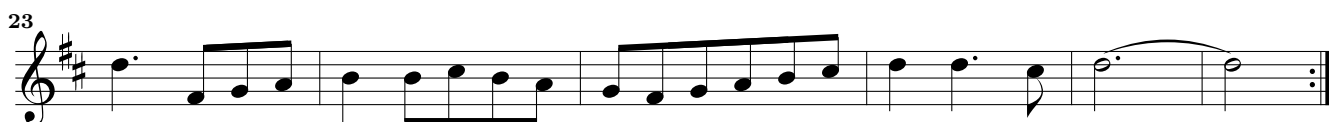
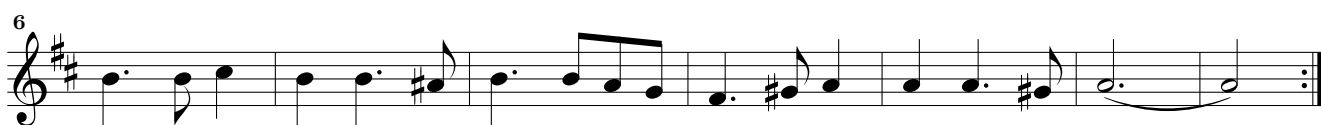
49

p

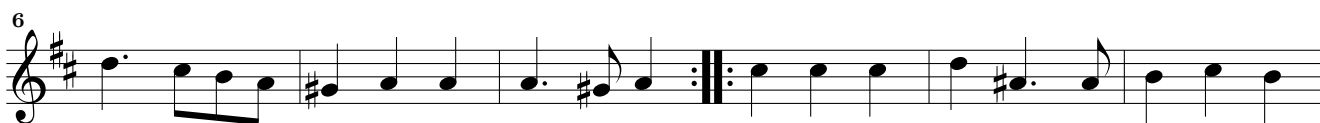
54



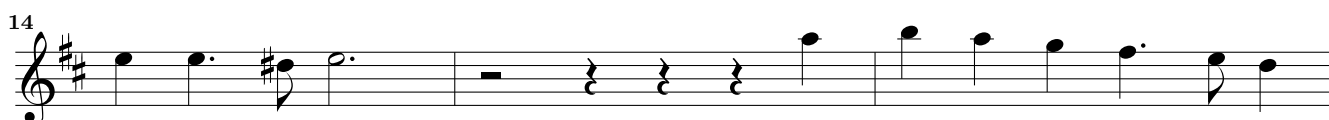
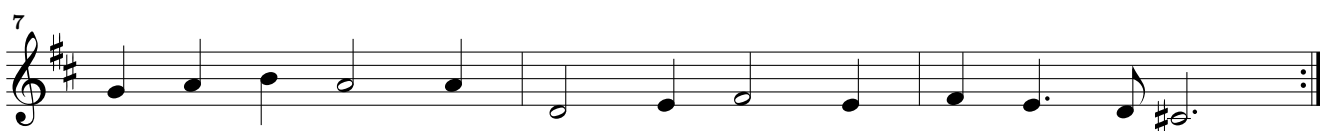
Suite

7. *Allmandt*8. *Courant*

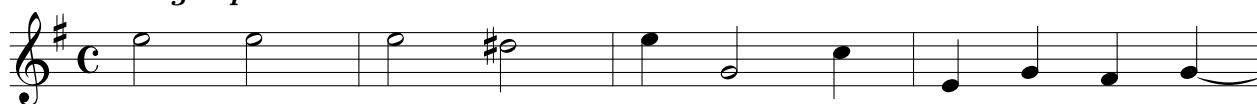
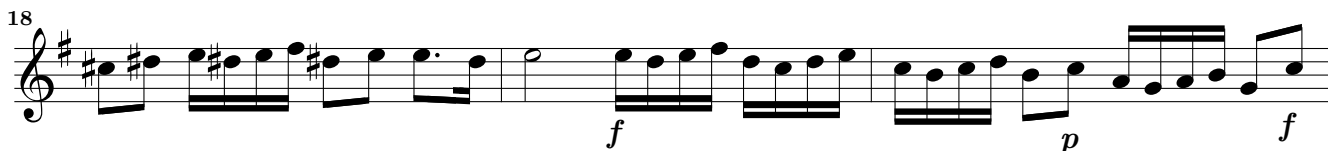
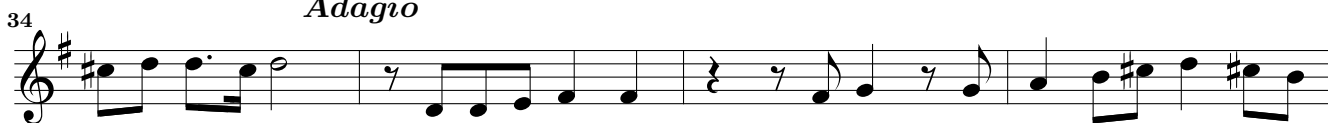
9. Saraband



10. Gigue



11. Sonata

11. *Adagio piano**Allegro**Adagio**Allegro**Adagio*

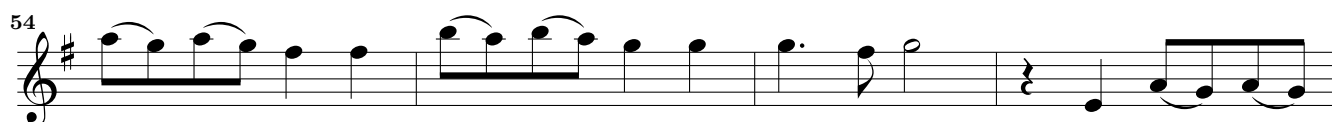
Allegro

42  *p*

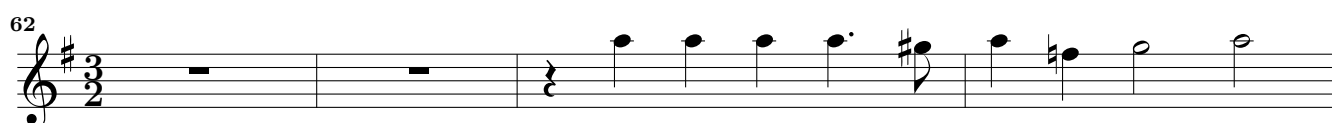
Adagio piano

45 

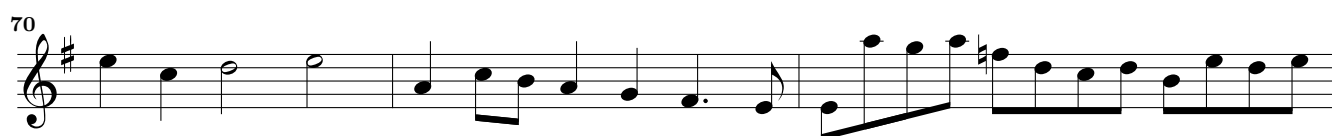
50 

54 

58 

62 

66 

70 

73 

76 

79  6

87

90

93

96

100

103

107

113

Suite

12. Allmandt

13. *Courant*

Musical score for the piece "13. Courant". It consists of five staves of music in G major and 3/4 time. The first staff starts with a treble clef, a key signature of one sharp (F#), and a 3/4 time signature. The music features a mix of eighth and quarter notes, with some slurs and a repeat sign at the end of the fifth staff.

14. *Sarabanda*

Musical score for the piece "14. Sarabanda". It consists of three staves of music in G major and 3/4 time. The first staff starts with a treble clef, a key signature of one sharp (F#), and a 3/4 time signature. The music is characterized by a slower tempo and features a mix of quarter and eighth notes, with a repeat sign at the end of the third staff.

15. *Gigue*

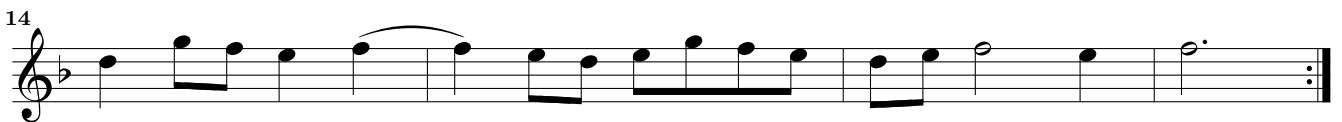
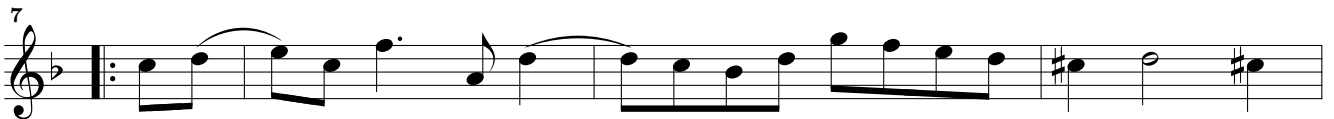
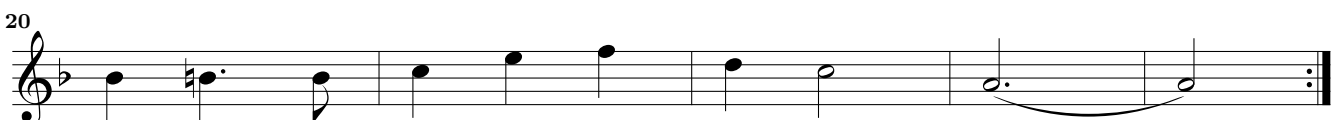
Musical score for the piece "15. Gigue". It consists of five staves of music in G major and 6/4 time. The first staff starts with a treble clef, a key signature of one sharp (F#), and a 6/4 time signature. The music is characterized by a lively tempo and features a mix of quarter and eighth notes, with a repeat sign at the end of the fifth staff.

16. Sonata

Musical score for Sonata 16, measures 1-53. The score is written in treble clef with a key signature of one flat (B-flat) and a common time signature (C). The tempo markings are *Allegro* (measures 17-44) and *Adagio* (measures 45-53). The score consists of 11 staves of music. Measure numbers 5, 8, 11, 14, 17, 21, 25, 29, 34, 37, 41, 45, 49, and 53 are indicated at the beginning of their respective staves. The piece concludes with a double bar line and a 3/2 time signature at the end of measure 53.

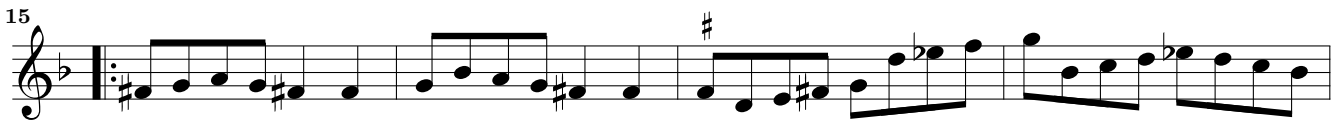
Musical score for Violino Secundo, measures 57-99. The score is written in treble clef with a key signature of one flat (B-flat) and a time signature of 3/2. The music consists of a single melodic line. Measures 57-62 are in 3/2 time. At measure 63, the time signature changes to common time (C). The piece concludes with a double bar line at measure 99.

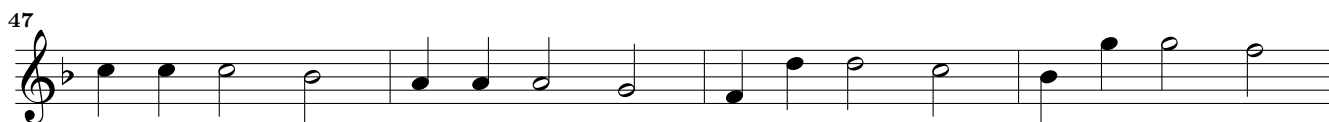
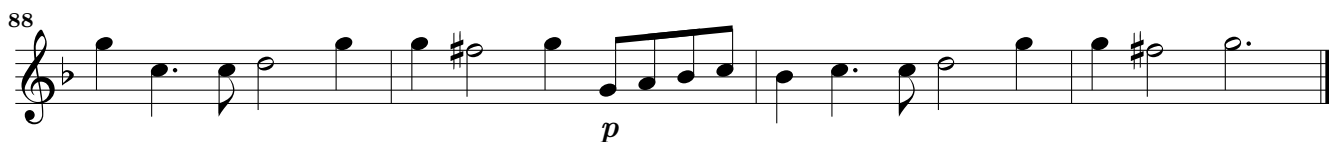
Suite

17. *Allmandt*18. *Courant*

19. *Saraband*20. *Giguæ*

21. Sonata



*Adagio*

Suite

22. *Bandle Simple*

Musical score for "Bandle Simple" in 7/8 time, key of B-flat major. The score consists of five staves of music. The first staff starts with a treble clef, a key signature of one flat, and a 7/8 time signature. The melody begins with a quarter rest followed by a quarter note G4, then a dotted quarter note A4, and continues with various rhythmic patterns. A repeat sign with first and second endings is present at measure 10. The piece concludes with a double bar line and repeat dots.

Gay

Musical score for "Gay" in 3/8 time, key of B-flat major. The score consists of three staves of music. The first staff starts with a treble clef, a key signature of one flat, and a 3/8 time signature. The melody is characterized by eighth and sixteenth notes. A repeat sign with first and second endings is present at measure 11. The piece concludes with a double bar line and repeat dots.

Amener

Musical score for "Amener" in 3/8 time, key of B-flat major. The score consists of four staves of music. The first staff starts with a treble clef, a key signature of one flat, and a 3/8 time signature. The melody features eighth and sixteenth notes. A repeat sign with first and second endings is present at measure 13. The piece concludes with a double bar line and repeat dots.

26. Sonata

26. Adagio

5

9 12

Solo

24

27

29

31

34

37

40 *Adagio piano*

44

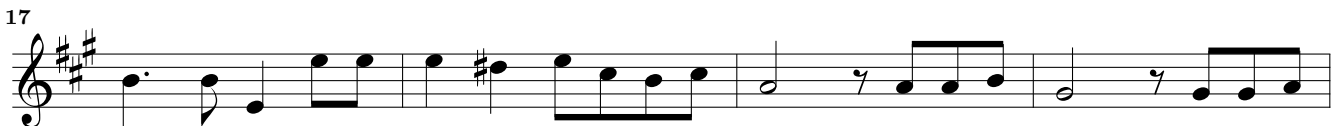
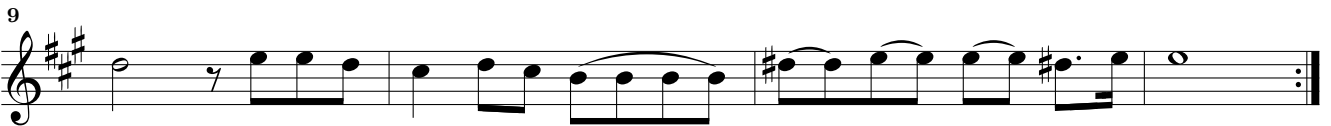
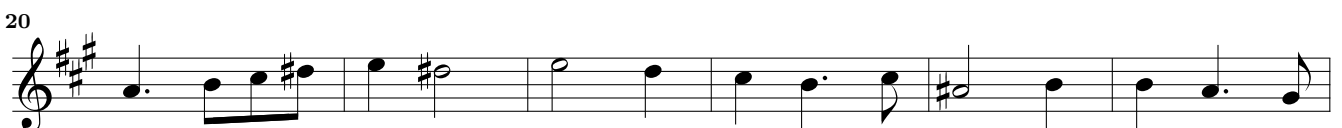
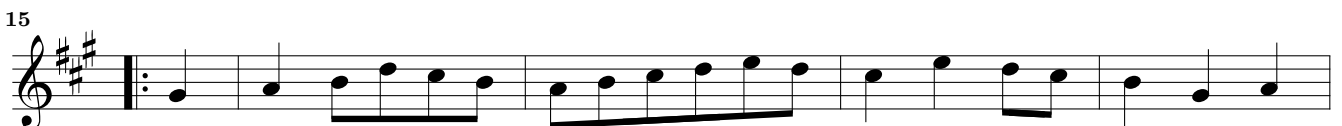
48

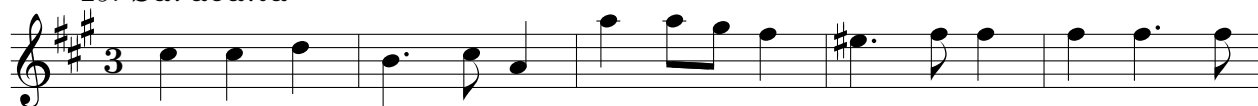
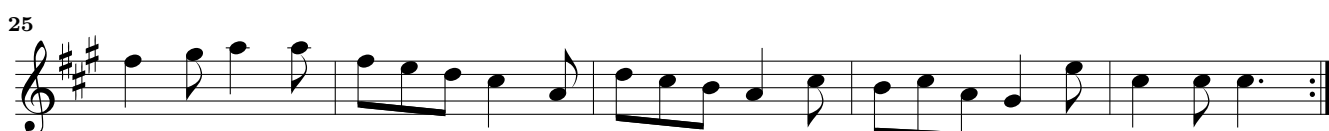
53

57

Musical score for Violino Secundo, measures 60-90. The score is written in treble clef with a key signature of two sharps (F# and C#). The music features a variety of rhythmic patterns, including eighth and sixteenth notes, and rests. Trills are indicated by a '7' above the notes in measures 71 and 74. Triplet markings (the number '3') are present in measures 78, 80, 83, 85, 87, and 89. The piece concludes with a *p* (piano) dynamic marking in measure 90.

Suite

27. *Allmandt*28. *Courant*

29. *Saraband*30. *Giguæ*

31. Sonata

31. *Adagio piano*

5 *Allegro*

10

14

17

21

25

28

32

35

40 *Adagio*

45

52

56

60

65

70

74

80

84

87

90

93

96

99

102

105

108

111 *Adagio piano*

115

Suite

32. *Ariae*

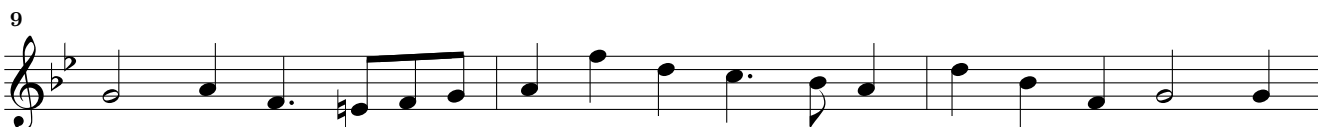
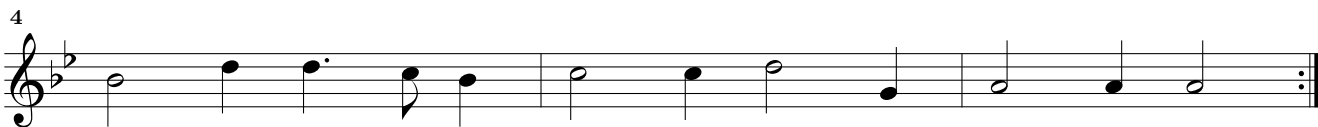
Musical score for 32. *Ariae*. The piece is in G minor (one flat) and common time (C). It consists of three staves of music. The first staff begins with a treble clef and a common time signature. The second staff starts with a measure rest of 4 measures. The third staff starts with a measure rest of 7 measures. The piece concludes with a double bar line and repeat dots.

33. *Courant*

Musical score for 33. *Courant*. The piece is in G minor (one flat) and 3/4 time. It consists of three staves of music. The first staff begins with a treble clef and a 3/4 time signature. The second staff starts with a measure rest of 6 measures. The third staff starts with a measure rest of 12 measures. The piece concludes with a double bar line and repeat dots.

34. *Saraband*

Musical score for 34. *Saraband*. The piece is in G minor (one flat) and 3/8 time. It consists of three staves of music. The first staff begins with a treble clef and a 3/8 time signature. The second staff starts with a measure rest of 6 measures. The third staff starts with a measure rest of 11 measures. The piece concludes with a double bar line and repeat dots.



36. Sonata

36. *Adagio piano*

6

11

16

Allegro

20

24

27

30

33

36

39

42

45

60

Solo

12

64

68

72

76 *Adagio piano piano*

82

89

93

96

100

104

107

111

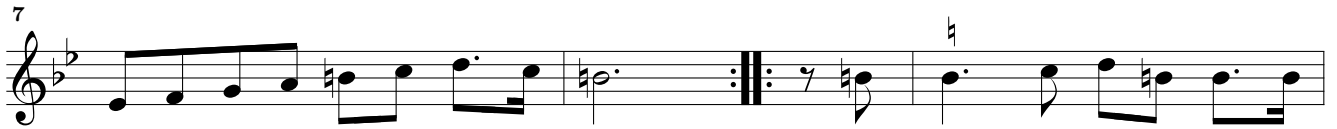
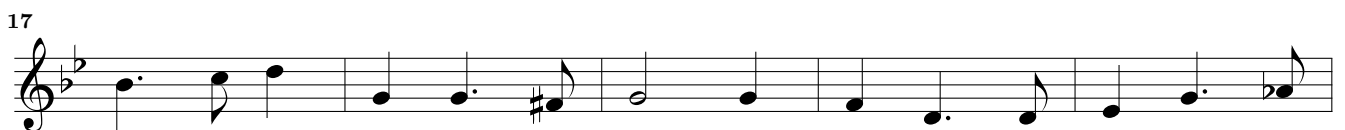
115

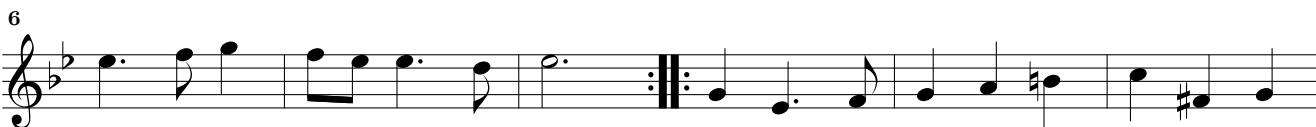
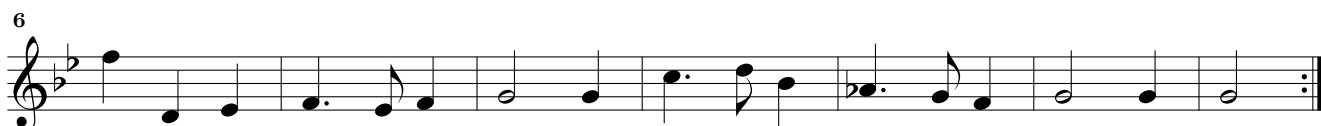
119

122

Detailed description: This page contains the musical score for the second violin part of the 36th sonata. It consists of 12 staves of music, numbered 64 to 122. The key signature is two flats (B-flat and E-flat), and the time signature is 6/4. The tempo and dynamics are marked 'Adagio piano piano' starting at measure 76. The notation includes various rhythmic values, accidentals, and rests. A double bar line with repeat dots appears at the end of measure 122.

Suite

37. *Allmandt*38. *Courant*

39. *Saraband*40. *Gigue*Sonata, Suite 41–47
Tacet