

Violoncello

Sonate für 2 Violinen, Violoncello und Basso continuo F-Dur

nach op.1 Nr.5

Gottfried Finger

Adagio

4

7

10

13

16

19

23

27

29

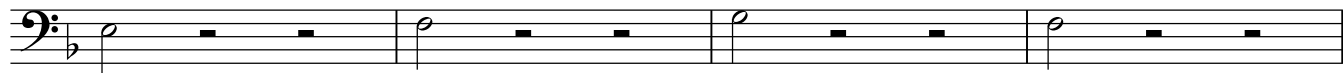
p

f

Adagio



6



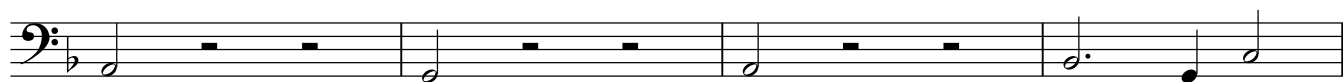
10



14



18



22



26



30



34



38



Allegro

4



7



10



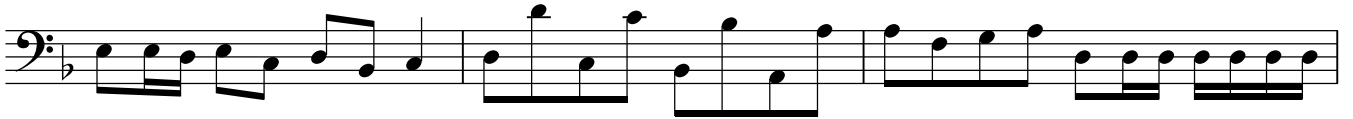
13



16



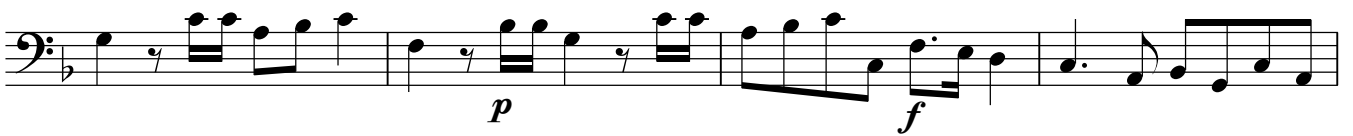
19



22



25



29



33



36



39



42



45

