

Missa I,

A. h.

Violino II.

**K** *rie.*

Christe  
Tacet.

**K** *rie.*

**E** *In Terra.*

Patrem.

Mus. 2368-D-1



4

**P** *Atrem.*

*Crucifixus.*

*Et iterum.*

*Et in Spiritum.*

*Amen.*

Musical staff with notes and rests.

Musical staff with notes and rests.

**S** *Anctus.*

Musical staff with notes and rests, including a 'Pleni' marking.

Musical staff with notes and rests.

Musical staff with notes and rests.

Musical staff with notes and rests.

**O** *Sanna.*

Musical staff with notes and rests.

Musical staff with notes and rests.

**B** *Enedictus.*

Musical staff with notes and rests.

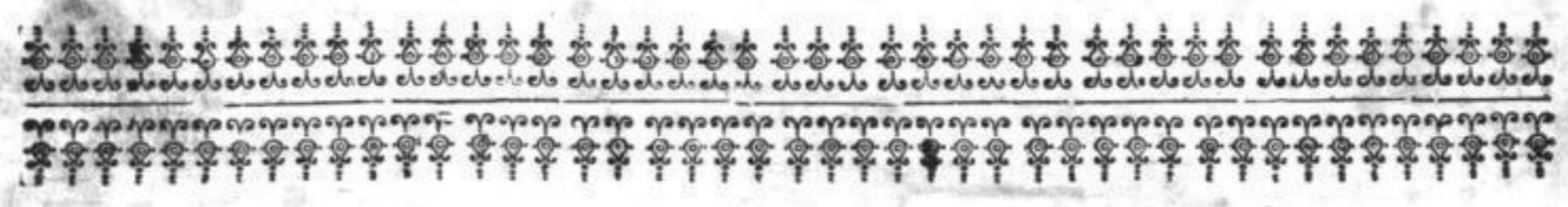
Ofanna da capo

Musical staff with notes and rests.

**A** *Gnus.*

Musical staff with notes and rests.

**Dona.**



Missa II. H. h.

**K** *irie.*

piano. fort.

**C** *Hriste.*

Kyrie da Capo.

**E** *T in Terra.*

Musical staff with treble and bass clefs, key signature of one sharp (F#), and a 6/8 time signature. The staff contains a series of rhythmic patterns, including eighth and sixteenth notes.

Gratias

Musical staff with treble and bass clefs, key signature of one sharp, and a 6/8 time signature. The staff contains a series of rhythmic patterns, including eighth and sixteenth notes.

Musical staff with treble and bass clefs, key signature of one sharp, and a 6/8 time signature. The staff contains a series of rhythmic patterns, including eighth and sixteenth notes.

Musical staff with treble and bass clefs, key signature of one sharp, and a 6/8 time signature. The staff contains a series of rhythmic patterns, including eighth and sixteenth notes.

piano,

presto,

Qui tollis.

Musical staff with treble and bass clefs, key signature of one sharp, and a 6/8 time signature. The staff contains a series of rhythmic patterns, including eighth and sixteenth notes.

Musical staff with treble and bass clefs, key signature of one sharp, and a 6/8 time signature. The staff contains a series of rhythmic patterns, including eighth and sixteenth notes.

Musical staff with treble and bass clefs, key signature of one sharp, and a 6/8 time signature. The staff contains a series of rhythmic patterns, including eighth and sixteenth notes.

Musical staff with treble and bass clefs, key signature of one sharp, and a 6/8 time signature. The staff contains a series of rhythmic patterns, including eighth and sixteenth notes.

**P** *Atrem.*

Musical staff with treble and bass clefs, key signature of one sharp, and a 6/8 time signature. The staff contains a series of rhythmic patterns, including eighth and sixteenth notes.

Musical staff with treble and bass clefs, key signature of one sharp, and a 3/4 time signature. The staff contains a series of rhythmic patterns, including eighth and sixteenth notes.

Et incarnatus est.

Musical staff with treble and bass clefs, key signature of one sharp, and a 3/4 time signature. The staff contains a series of rhythmic patterns, including eighth and sixteenth notes.

B

Et in Spiritum.

piano.

**S** *Anctus.*

p. f.

**O** *Sanna.*

p. fort.



**B** *Benedictus.*



*Osanna da Capo.*



**A** *Agnus DEI.*



*Dona nobis.*





Missa III, C. b.

**K** *Yrie.* Musical notation for the beginning of the Kyrie section, featuring a treble clef, a key signature of one flat, and a common time signature.

Musical notation for the first staff of the Kyrie section.

Musical notation for the second staff of the Kyrie section.

Musical notation for the third staff of the Kyrie section.

**E** *In Terra.* Musical notation for the beginning of the 'In Terra' section, featuring a treble clef, a key signature of one flat, and a common time signature.

Musical notation for the first staff of the 'In Terra' section.

Musical notation for the second staff of the 'In Terra' section, including a 3/2 time signature change and the label *Gratias.*

Musical notation for the third staff of the 'In Terra' section.

Musical notation for the fourth staff of the 'In Terra' section, including a common time signature change and the label *Quoniam.*

Musical notation for the fifth staff of the 'In Terra' section.



**P** *Atrem.*

*Genitum.*

**S** *Antus.*





Missa IV. D. h.

**K** *Kyrie.*

**C** *Christe.*

**E** *In Terra.*

*Gratias.*

Handwritten musical score for two sections: "Qui tollis." and "Quoniam." The score is written on ten staves. The first section, "Qui tollis.", spans the first seven staves. The second section, "Quoniam.", spans the remaining three staves. The notation includes various rhythmic values, accidentals, and dynamic markings such as *ff* and *f*. The manuscript shows signs of age, with some ink bleed-through and staining.

Qui tollis.

Quoniam.

**P** *Atrem.*

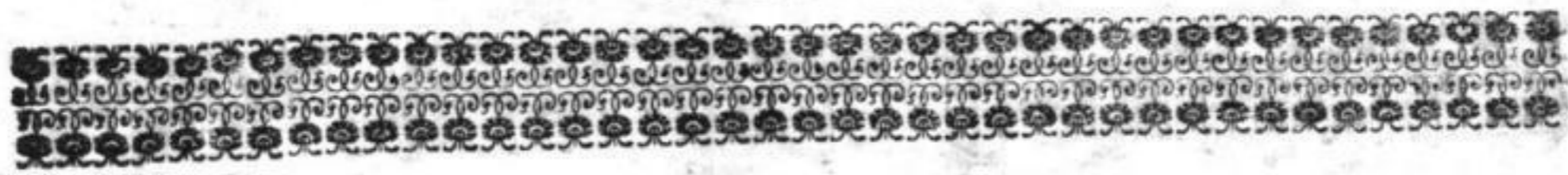
*Crucifixus,*

D

**S** *Anctus.*

**O** *Sanna.*

**A** *Gnus DEI.*



Missa V.

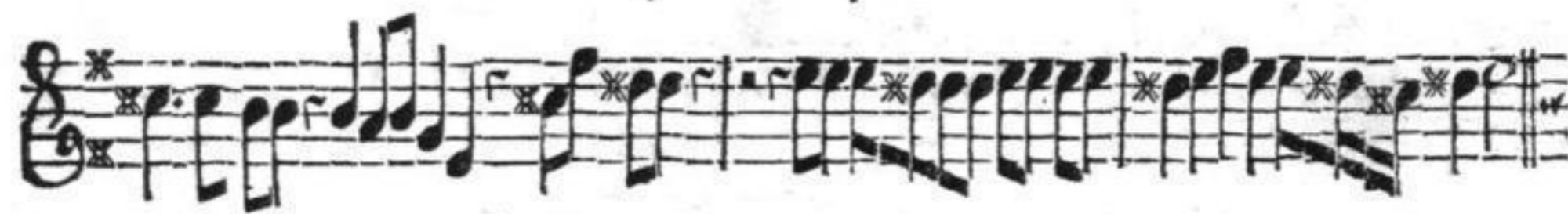
G. h.

**K** *rie.*

**C** *Hriste.* **K** *rie.*

**E** *In Terra.*

*præto.*  
*qui tollis.*



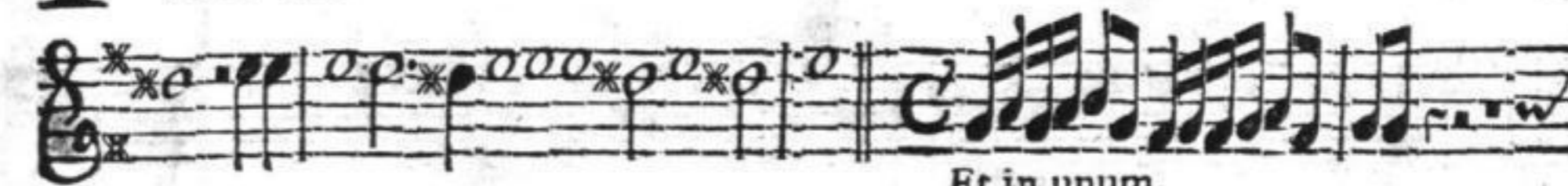
Quoniam.



alla breve.



Atrem.



Et in unum.





Et in Carnat,

Crucifixus.

presto.

Et iterum.

E



**S** *Anctus.*



**O** *Sanna.*



*piano.*

*forte*

Bened. Tacet.  
Ofan. da Capo



**A** *Gnus.*



*Dona,*



*piano.*



*forte.*



Missa VI. F. b.



*Kyrie.*



*Hriste.*



*In Terra.*





Et incarnatus.

Crucifixus.

tr.

Musical staff with notes and accidentals.

Musical staff with notes and accidentals.

Musical staff with notes and accidentals.

Et in S.

Musical staff with notes and accidentals.

Musical staff with notes and accidentals.

Musical staff with notes and accidentals.

Musical staff with notes and accidentals.

**S** *Anctus.*

**O** *Sanna.*

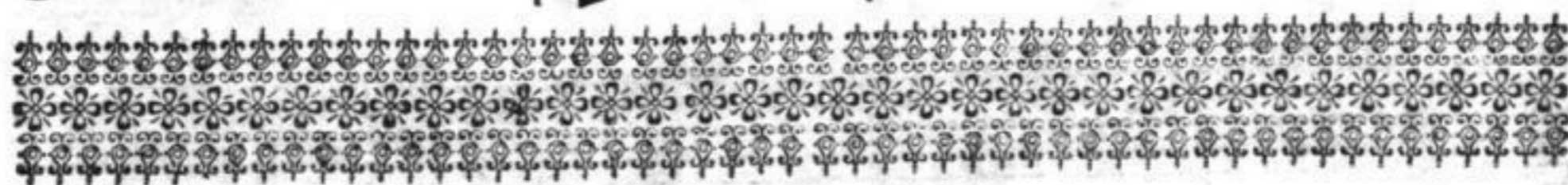
**B** *Enedictus.*

*Osanna da Capo.*

**A** *Gnus DEI.*

*Dona.*

Three staves of musical notation in G minor. The first two staves contain melodic lines with various rhythmic values and accidentals. The third staff continues the melodic line and ends with a double bar line and repeat sign.



Missa VII.

G. b.

**K** *irie.*

Two staves of musical notation for the beginning of the Kyrie. The first staff starts with a large 'K' and the word 'irie.' below it. The music is in G minor and features a melodic line with various rhythmic values.

*alla breve.*

**C** *Hriste.*

Two staves of musical notation for the beginning of the Credo. The first staff starts with a large 'C' and the word 'Hriste.' below it. The music is in G minor and features a melodic line with various rhythmic values. The tempo marking 'alla breve.' is placed above the first staff.

Two staves of musical notation for the end of the Credo. The music concludes with a double bar line and repeat sign. The text 'Kyrie da Capo.' is written to the right of the second staff.

**E** *In Terra.*

Two staves of musical notation for the beginning of the Gloria. The first staff starts with a large 'E' and the words 'In Terra.' below it. The music is in G minor and features a melodic line with various rhythmic values.

Qui rollis.

Quoniam.

Cum Sancto Spiritu.

**P**

Atrem.

Et incarnatus.

Sim

S  
A



Handwritten musical notation on a five-line staff, featuring various note values and rests.

Crucifixus.

Handwritten musical notation on a five-line staff, continuing the piece.

Handwritten musical notation on a five-line staff, including a fermata over a note.

Handwritten musical notation on a five-line staff, featuring a key signature change to one flat.

Handwritten musical notation on a five-line staff, ending with a double bar line.

Et in Spiritum.

Handwritten musical notation on a five-line staff, featuring a key signature change to two flats.

Handwritten musical notation on a five-line staff, including a fermata.

Simul.

Handwritten musical notation on a five-line staff, featuring a key signature change to one flat.

Handwritten musical notation on a five-line staff, including a fermata.

piano.

Handwritten musical notation on a five-line staff, featuring a key signature change to two flats.

Anctus.

Handwritten musical notation on a five-line staff, ending with a fermata and a final chord marked with a 'G' below it.

**O** *Sanna.*

**B** *Ene dictus.*

*Osanna da Capo.*

**A** *Gnus.*

*presto.*

*Dona.*

*piano.*

*fortiter.*

