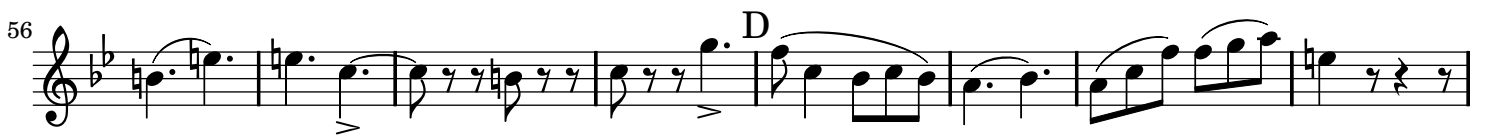
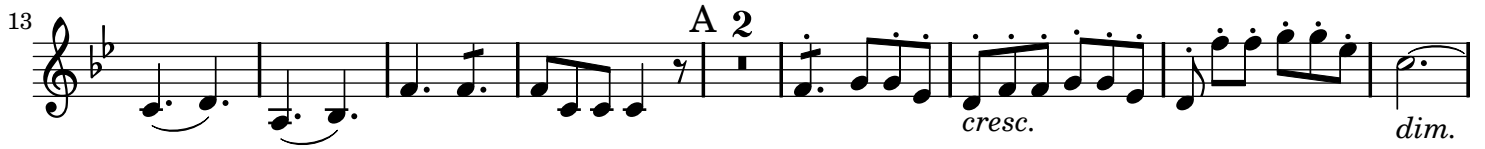


String Quintet in B-flat major

Giuseppe Mascia (1808 - ca.1870)

I. Allegro giusto --- Violin II

opus 99



84 Musical staff 84: Treble clef, key signature of two flats (B-flat, E-flat). The staff contains a sequence of notes with various articulations including accents and slurs. A dynamic marking of *p* (piano) is placed below the staff.

92 Musical staff 92: Treble clef, key signature of two flats. The staff contains a sequence of notes with slurs and accents. A dynamic marking of *p* is placed below the staff.

99 Musical staff 99: Treble clef, key signature of two flats. The staff contains a sequence of notes with slurs and accents. A dynamic marking of *p* is placed below the staff.

106 Musical staff 106: Treble clef, key signature of two flats. The staff contains a sequence of notes with slurs and accents. Dynamic markings of *f* (forte) and *p* are present. The staff ends with a first ending bracket labeled "1 end.".

112 Musical staff 112: Treble clef, key signature of two flats. The staff contains a sequence of notes with slurs and accents. A first ending bracket labeled "1 end." spans the first few measures, and a second ending bracket labeled "2 end." spans the last few measures. A triplet of notes is marked with a "3" above it. A dynamic marking of *p* is at the end.

122 Musical staff 122: Treble clef, key signature of two flats. The staff contains a sequence of notes with slurs and accents. A key signature change to one flat (F major) is indicated by an "E" above the staff.

128 Musical staff 128: Treble clef, key signature of one flat. The staff contains a sequence of notes with slurs and accents.

134 Musical staff 134: Treble clef, key signature of one flat. The staff contains a sequence of notes with slurs and accents. Dynamic markings of *f* and *p* are present.

140 Musical staff 140: Treble clef, key signature of one sharp (F# major). The staff contains a sequence of notes with slurs and accents.

147 Musical staff 147: Treble clef, key signature of one sharp. The staff contains a sequence of notes with slurs and accents.

154 Musical staff 154: Treble clef, key signature of one sharp (F#). The staff contains a sequence of notes starting with a quarter rest, followed by quarter notes, eighth notes, and sixteenth notes. Dynamics include *mf* and *p*.

162 Musical staff 162: Treble clef, key signature of one sharp (F#). The staff contains a sequence of notes with various articulations like accents and slurs.

172 Musical staff 172: Treble clef, key signature of one sharp (F#). The staff contains a sequence of notes with a *cresc.* and a *f* dynamic.

178 Musical staff 178: Treble clef, key signature of two flats (Bb, Eb). The staff contains a sequence of notes with a *p* dynamic, a crescendo, a *f* dynamic, and a final *p* dynamic.

184 Musical staff 184: Treble clef, key signature of two flats (Bb, Eb). The staff contains a sequence of notes with a *p* dynamic.


191 Musical staff 191: Treble clef, key signature of two flats (Bb, Eb). The staff contains a sequence of notes with various articulations like accents and slurs.

197 Musical staff 197: Treble clef, key signature of two flats (Bb, Eb). The staff contains a sequence of notes with various articulations like accents and slurs.

204 Musical staff 204: Treble clef, key signature of two flats (Bb, Eb). The staff contains a sequence of notes with a *f* dynamic and various articulations like accents and slurs.

209 Musical staff 209: Treble clef, key signature of two flats (Bb, Eb). The staff contains a sequence of notes with various articulations like accents and slurs.

214 Musical staff 214: Treble clef, key signature of two flats (Bb, Eb). The staff contains a sequence of notes with various articulations like accents and slurs.

219  Musical notation for measures 219-227. The staff is in treble clef with a key signature of two flats. It features a series of eighth and sixteenth notes with accents, followed by a series of dotted half notes. Dynamics include *p* and *f*.

228  Musical notation for measures 228-234. The staff is in treble clef with a key signature of two flats. It features a series of eighth and sixteenth notes with accents, followed by a series of dotted half notes. Dynamics include *p* and *f*.

235  Musical notation for measures 235-243. The staff is in treble clef with a key signature of two flats. It features a series of eighth and sixteenth notes with accents, followed by a series of dotted half notes. Dynamics include *p* and *f*.

244  Musical notation for measures 244-250. The staff is in treble clef with a key signature of two flats. It features a series of eighth and sixteenth notes with accents, followed by a series of dotted half notes. Dynamics include *f* and *p*.

251  Musical notation for measures 251-257. The staff is in treble clef with a key signature of two flats. It features a series of eighth and sixteenth notes with accents, followed by a series of dotted half notes. Dynamics include *cresc.* and *p*.

258  Musical notation for measures 258-265. The staff is in treble clef with a key signature of two flats. It features a series of eighth and sixteenth notes with accents, followed by a series of dotted half notes. Dynamics include *pp* and *f*.

266  Musical notation for measures 266-272. The staff is in treble clef with a key signature of two flats. It features a series of eighth and sixteenth notes with accents, followed by a series of dotted half notes. Dynamics include *f*.