

Tommaso
GIORDANI

Six Quatuors
op.8

Alto

Sei
QUARTETTI
per
Due VIOLINI, VIOLA, e
VIOLONCELLO
Composti da
TOMMASO GIORDANI,
Opera VIII.
Umilmente Dedicati
Sua Eccellenza La Contessa di
TAAFFE, &c, &c. *Pr. 10.0.*
LONDON. Printed for W. Nisbet, the Corner of
Lancaster Court Strand.
Where may be had
Six Quartets by Kachon Pr. 10.0. Six by Madam Symon Pr. 10.0.

"Le Concert"

90

96

103

109

116

124

133

141

149

156

165

172

Largo *ten.*

p

9

ten.

16

p *f*

25

sf *p* *Solo*

30

35

mf *p*

40

p

46

f *p*

53 *Solo*

f

Minuetto

f 1

10

Fine p

18

1

28

Solo sf p

38

46

2

59 *Solo*

Sf p pp D.C. il Primo Min. Senza Replica

Quatuor Op.8 n°2

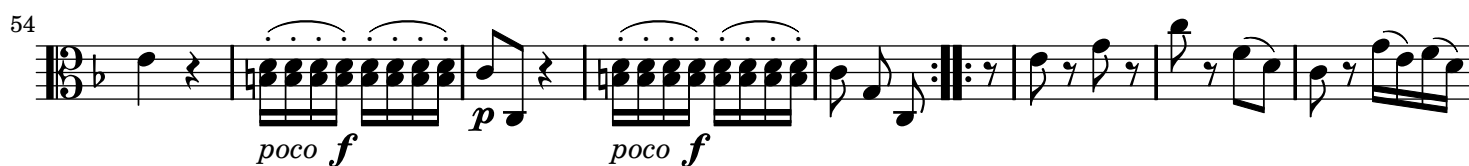
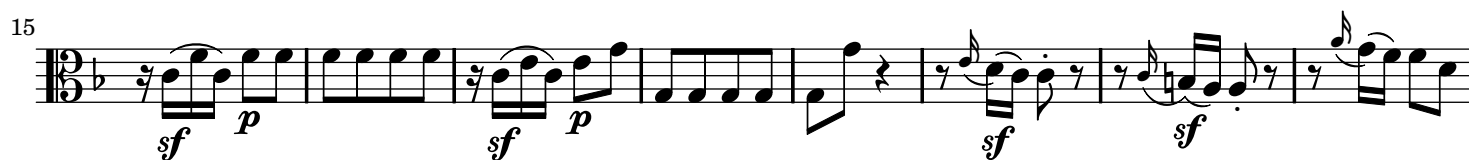
Viola

Tommaso GIORDANI

(1738-1806)

Allegretto

1



62 *Solo*
sf 3 *p* *sf* 3 *p*

71 *ten.* *Solo*
3

79 *Solo*
sf *sf* *f* *sf*

87 *f* *p* *f* 3

99 *Solo*
f

107 *tr* *p*

116

125 1 *f* *tr* 3

134 *mf*

Larghetto

sempre p

11

Solo

21

3

34

44

Solo

54

Solo

66

Allegretto

mf *f*

5

5 *sf* *p*

16

3

22

sf *p*

28 *f*

35 *Solo*

40

45

50 *sf sf p*

57 *f*

62 *p*

68

74

81 *p*

87 *f*

Detailed description: This page of a musical score for Viola, measures 28 to 90, is written in 3/4 time with a key signature of one flat (B-flat). The score consists of ten staves of music. Measure 28 begins with a forte (*f*) dynamic. A 'Solo' marking is placed above the staff at measure 35. The music features a variety of rhythmic patterns, including eighth and sixteenth notes, often beamed together. Dynamics fluctuate throughout, with *sf* (sforzando) appearing at measures 50 and 57, *p* (piano) at measures 50 and 62, and another *f* at measure 87. The piece concludes with a double bar line at measure 90.

Quatuor Op.8 n°3

Viola

Tommaso GIORDANI

(1738-1806)

Spiritoso

7

16

23

32

41

49

56

64

70 *Solo*
f

77 *sf* *ten.*
f

84 *sf* *tr*
sf

91 *ten.* *p* *f* *ten.*
p

100 *f* *p*

109 1

117 *Solo*
f *f* *p*

125 *p* *Solo*
f

133 *f* *p* *sf*

141 *sf* *sf*

Larghetto

12

24

35

47

Allegretto

12

24

35

47

59 *f* *p*

71 *p*

79 *f* *p*

92 *p* *f*

105 *p* *f*

118 *ten.*

131

144 *Solo* *sf* *1* *sf*

157 *p* *f*

169 *p* *f* *mf*

181 *f*

Quatuor Op.8 n°4

Viola

Tommaso GIORDANI

(1738-1806)

Spiritoso

mf *ten.* *p*

7 *mf* *sf* *sf* *p*

13 *sf* *p*

21 *f* *Solo* *tr*

26

31 *f* *p*

38

47 *1*

58 *cresc.* *f*

66 *2* *ff* *p* *f* *p* *f*

76 *p* 2 *p*

84 *ten.*

93 *Solo* 1 *f*

101 *p*

110 *sf* *ten.* *p* *sf*

116 *p*

126

135 *Solo* *f* *tr* *tr*

141

145 *p*

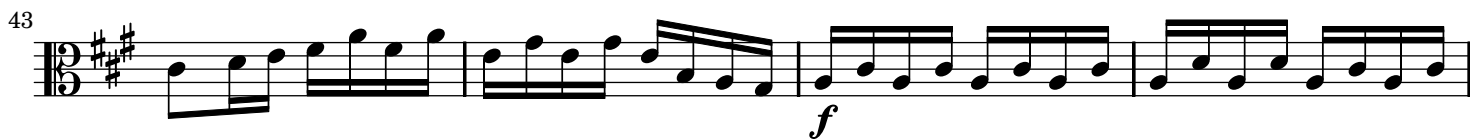
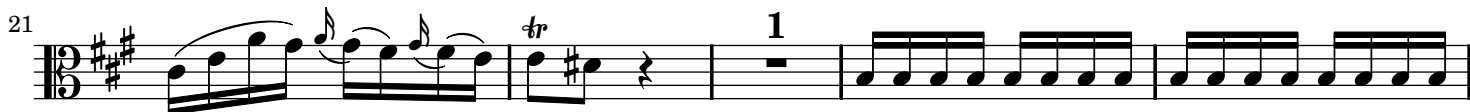
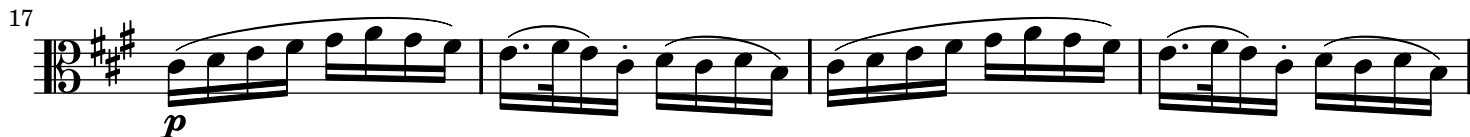
152 *sf*

161 *f* 3 *ten.*

171 *sf*

Detailed description: This is a page of a musical score for the Viola part of a quartet. The score is written in 3/4 time and the key signature has three sharps (F#, C#, G#). The page contains 14 staves of music, numbered from 76 to 171. The notation includes various dynamics such as *p* (piano), *f* (forte), *sf* (sforzando), and *ten.* (tenuto). There are also performance instructions like *Solo* and *tr* (trills). The music features a variety of rhythmic patterns, including eighth and sixteenth notes, and rests. The piece concludes with a double bar line at measure 171.

Rondo - Allegretto Grazioso



51 **Minore**
ten.

59

68 *Solo*

75

80 *p*

88 *f* *dim.*

97 **Majore**
p

102 *f*

107

112 *p* *assai cresc.* *f* *p* *cresc.*

117 *f* *sf* *ff*

54 *Solo*
sf sf sf

62 *mf*

68 *sf p*

76 *sf p sf*

83 *p*

90 *f* 1

99 *p*

106 *p f*

Largo

Sotto Voce

8

f *p*

14

21

sf *p*

Tempo di Minuetto

f

9

Fine *p*

18

sf

29

f *p*

38

Solo *f*

44

tr *Da Capo il Primo*

Quatuor Op.8 n°6

Viola

Tommaso GIORDANI

(1738-1806)

Allegro Maestoso

8

15

22

30

36

44

50

57

f *p* *f* *p* *f* *p*

f *p* *f* *f* *ten.*

ten. *f* *p* *f* *p* *f* *sf*

p *ten.* *Solo* *f*

p *f* *p* *f*

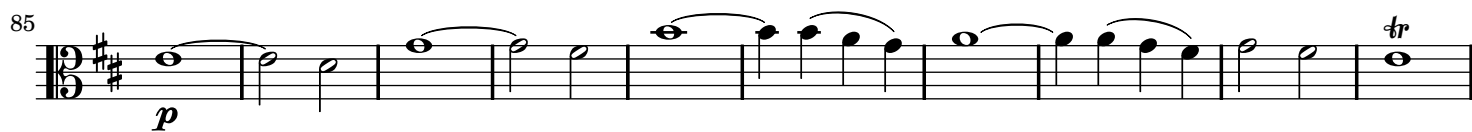
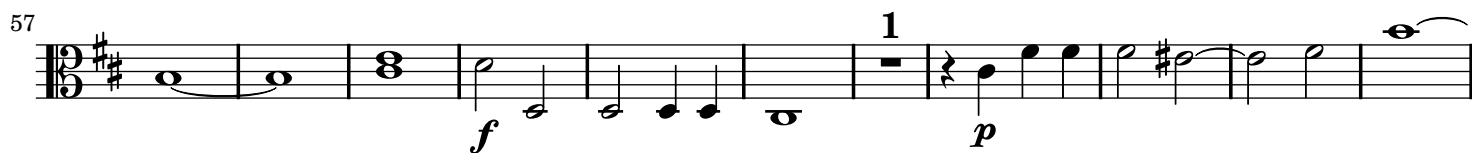
f *f* *p* *ten.*

f *ten.* *f*

f *p* *f* *p* *p*

Fugato

17



101

sf

109

1 *f* *p*

119

1 *f* *p*

128

p

137

p

Minuetto Affettuoso

p *f*

10

p 1 *p* *sf*

23

sf *p* *Fine* *p*

32

p

42

2 *p*

Da Capo