

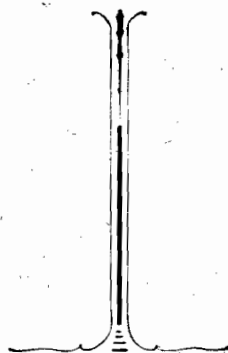
ANT. REICHA.**24****QUINTETTES**

POUR

Flûte, Hautbois (ou 2^{me} Flûte), Clarinette,
Cor, Basson.N. B. — A défaut de HAUTOIS, on peut le remplacer
par une 2^{me} FLÛTE avec patte d'Ut.**1^{ère} Série.**

Op. 88. — 6 QUINTETTES.

- | | | |
|------|---------|------|
| N° 1 | en MI | min. |
| - 2 | en MI b | maj. |
| - 3 | en SOL | maj. |
| - 4 | en RÉ | min. |
| - 5 | en SI b | maj. |
| - 6 | en FA | maj. |

**3^{me} Série.**

Op. 99. — 6 QUINTETTES.

- | | | |
|------|--------|------|
| N° 1 | en UT | maj. |
| - 2 | en FA | min. |
| - 3 | en FA | maj. |
| - 4 | en RÉ | maj. |
| - 5 | en SI | min. |
| - 6 | en SOL | maj. |

2^{me} Série.

Op. 91. — 6 QUINTETTES.

- | | | |
|------|--------|------|
| N° 1 | en UT | maj. |
| - 2 | en LA | min. |
| - 3 | en RÉ | maj. |
| - 4 | en SOL | min. |
| - 5 | en LA | maj. |
| - 6 | en UT | min. |

**4^{me} Série.**

Op. 100. — 6 QUINTETTES.

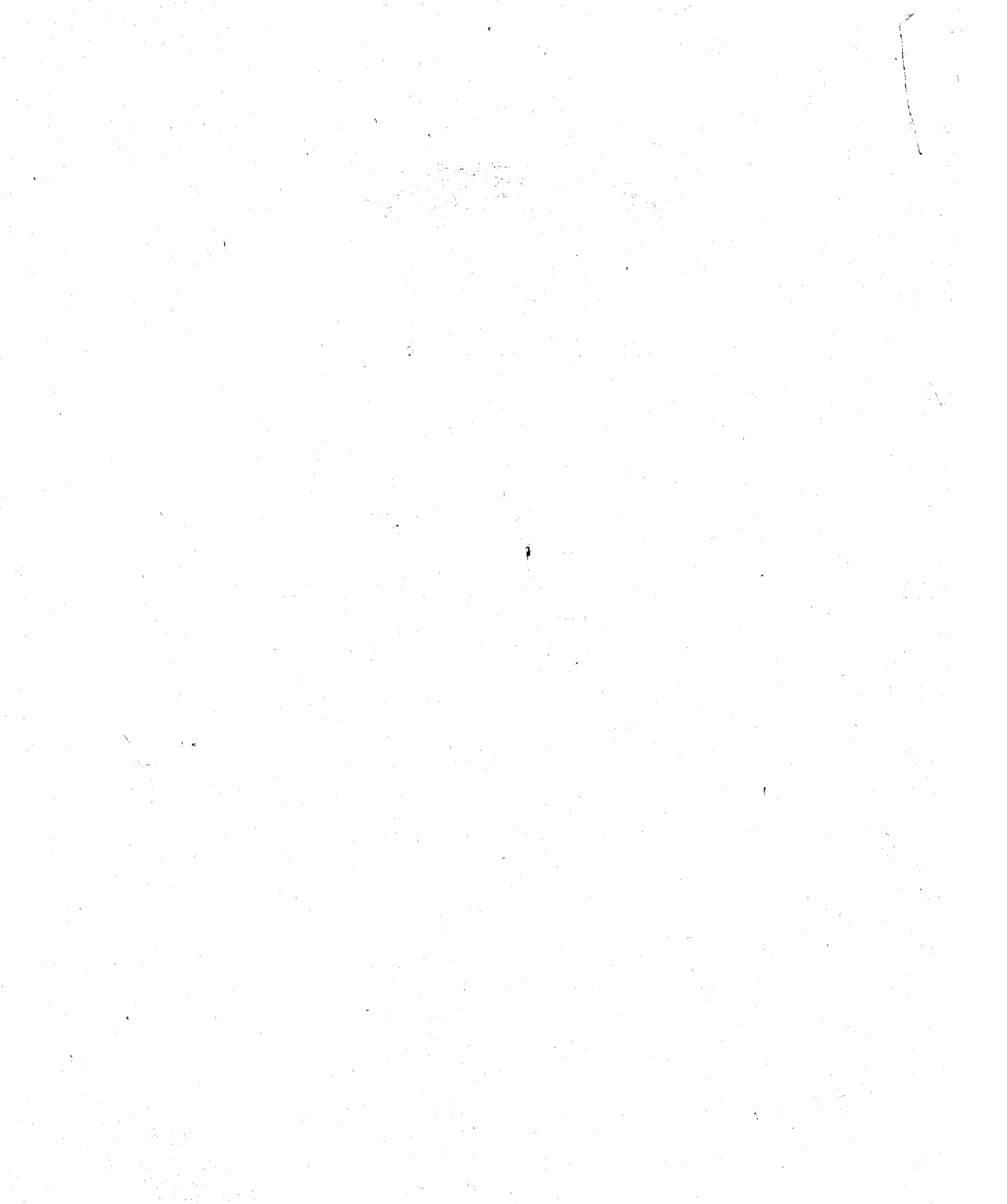
- | | | |
|------|---------|------|
| N° 1 | en FA | maj. |
| - 2 | en RÉ | min. |
| - 3 | en MI b | maj. |
| - 4 | en MI b | min. |
| - 5 | en LA | min. |
| - 6 | en SI b | maj. |

chaque quintette: 18 fr.

Paris, RICHALT & C^{ie}, Editeurs, 4, Boul^d des Italiens, au 1^{er}.Déposé suivant
les traités internationaux. (1890).

PROPRIÉTÉ POUR TOUTS PAYS.

Tous droits de Reproduction,
d'Exécution et d'Arrangement réservés.1^{re}, 2^e et 3^e SÉRIE: 19258 à 19275. R.,
4^e SÉRIE: 8499 à 8504. R.



Op. N°

ANT. REICHA.

24

QUINTETTES

POUR

Flûte, Hautbois (ou 2^{me} Flûte), Clarinette,
Cor, Basson.

A.B. — A défaut de HAUTOIS on peut le remplacer
par une 2^{me} FLÛTE avec patte d'Ut.

1^{re} Série.

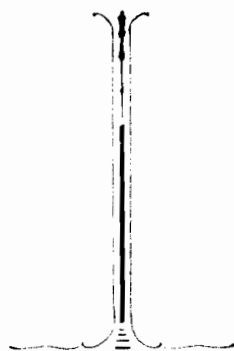
Op. 88. — 6 QUINTETTES.

- N° 1 en **MI** min.
- 2 en **MI** \flat maj.
- 3 en **SOL** maj.
- 4 en **RÉ** min.
- 5 en **SI** \flat maj.
- 6 en **FA** maj.

3^{me} Série.

Op. 99. — 6 QUINTETTES.

- N° 1 en **UT** maj.
- 2 en **FA** min.
- 3 en **FA** maj.
- 4 en **RÉ** maj.
- 5 en **SI** min.
- 6 en **SOL** maj.



2^{me} Série.

Op. 91. — 6 QUINTETTES.

- N° 1 en **UT** maj.
- 2 en **LA** min.
- 3 en **RÉ** maj.
- 4 en **SOL** min.
- 5 en **LA** maj.
- 6 en **UT** min.

4^{me} Série.

Op. 160. — 6 QUINTETTES.

- N° 1 en **FA** maj.
- 2 en **RÉ** min.
- 3 en **MI** \flat maj.
- 4 en **MI** \sharp min.
- 5 en **LA** min.
- 6 en **SI** \flat maj.



chaque quintette: 18 fr.

Paris, RICHALD & C^{ie}, Editeurs, 4, Boul^d des Italiens, au 1^r.

PROPRIÉTÉ POUR TOUTS PAYS.

Déposé suivant
les traités internationaux. (1890).

Tous droits de Reproduction,
d'Exécution et d'Arrangement réservés

1^{re}, 2^e et 3^e SÉRIE: 19258 à 19275. R.,
4^e SÉRIE: 8499 à 8504. R.

MAISON SIMON RICHALD
fondée en 1895
RICHALD & C^{ie}, Succ^{rs}

557

403920

2115/44 International # 1.84

FLUTE

1^{re}
QUINTETTO.

Lento

12
légèrement.

FLUTE.

This musical score for Flute, page 5, consists of ten staves of music. The notation includes various dynamics such as *ffz*, *fz*, *f*, *cres:*, *p*, and *fp*. Articulation marks include *tr* (trills) and *trun* (trills with grace notes). Fingerings are indicated by numbers 1, 2, 3, and 4. The score features complex rhythmic patterns, including triplets and sixteenth-note runs. A first ending bracket labeled *1^{ma}* and a second ending bracket labeled *2^{da}* are present. The piece concludes with a double bar line and the Roman numeral *II*.

FLUTE

Musical score for Flute, page 4. The score consists of 14 staves of music. It includes various dynamics such as *p*, *fp*, *ff*, *pp*, and *f*. Performance markings include *I*, *II*, *rallent:*, and *a tempo.*. There are also numerical markings like 3, 4, 5, and 9. The score features complex rhythmic patterns with many sixteenth and thirty-second notes, often beamed together. A double bar line with *II* below it is present in the 10th staff. The tempo changes from *Lento* to *Allegro* at the 10th staff. The piece concludes with a *cres: - - - F* marking.

FLÛTE

Musical score for Flute, measures 3-12. The score is written in treble clef with a key signature of one flat (B-flat). It features a complex melodic line with many slurs and ornaments. Measure numbers 3, 8, and 1 are indicated above the staff. Dynamics include *p* (piano) and *F* (forte). A *cres:* (crescendo) marking is present below the staff.

ANDANTE. Musical score for Flute, measures 13-14. The tempo is marked *ANDANTE*. The time signature is 2/4. Measure numbers 13 and 4 are indicated above the staff. Dynamics include *p* (piano).

Musical score for Flute, measures 15-16. The score continues with complex melodic patterns and slurs. Measure numbers 5 and 3 are indicated above the staff. Dynamics include *F* (forte).

Musical score for Flute, measures 17-18. The score continues with complex melodic patterns and slurs. Measure numbers 3 and 7 are indicated above the staff. Dynamics include *F* (forte) and *P* (piano).

Musical score for Flute, measures 19-20. The score continues with complex melodic patterns and slurs. Measure numbers 1 and 7 are indicated above the staff.

Musical score for Flute, measures 21-22. The score continues with complex melodic patterns and slurs. Measure numbers 1 and 7 are indicated above the staff.

Musical score for Flute, measures 23-24. The score continues with complex melodic patterns and slurs. Measure numbers 4, 4, 5, and 3 are indicated above the staff.

Musical score for Flute, measures 25-26. The score continues with complex melodic patterns and slurs. Measure numbers 3 and 5 are indicated above the staff.

Musical score for Flute, measures 27-28. The score continues with complex melodic patterns and slurs. Measure numbers 2 and 4 are indicated above the staff.

FLÛTE.

All. Scherzo.

MINUETTO.

Musical score for the Minuet section, featuring multiple staves with treble clefs and various musical notations including notes, rests, and dynamics. The score includes markings for *mf*, *p*, *f*, and *pp*. It also contains fingerings (3, 4, 7, 2, 4) and articulation marks.

Fin.

TRIO.

Musical score for the Trio section, featuring multiple staves with treble clefs and various musical notations including notes, rests, and dynamics. The score includes markings for *p*, *pp*, and *f*. It also contains fingerings (7, 8, 1, 2, 3, 4, 5, 6) and articulation marks.

FLÛTE

This page of a musical score for Flute contains 14 staves of music. The notation includes various rhythmic values, slurs, and dynamic markings such as *p*, *f*, *ff*, and *pp*. Fingerings are indicated by numbers 1-5 above notes. Trills are marked with 'tr'. The score shows a complex melodic line with frequent sixteenth-note passages and some triplet figures. The key signature changes from one sharp (F#) to two sharps (F# and C#) and back to one sharp. The page number '8' is printed at the top left, and the instrument name 'FLÛTE' is centered at the top.

FLUTE

This musical score for Flute consists of 14 staves. The notation includes various rhythmic values, slurs, and dynamic markings. Key markings include *pp* (pianissimo) at the beginning of the second staff, *pp* at the start of the eighth staff, and *fp* (fortissimo piano) at the start of the ninth staff. A *cres.* (crescendo) marking is present above the sixth staff. Fingerings are indicated by numbers 1, 2, 3, 4, 5, and 6. The score concludes with a double bar line and a *ff* (fortissimo) marking at the end of the final staff.

