

Magnificat. a 3. Dehlig: Barbieri

Violino Primo GBB<sup>o</sup>

*Maestoso* *for* *fr*

*fr* *fr* *fr* *fr* *fr* *fr* *fr* *fr* *fr* *fr*

*staccato* *Allo molto*

*121*

*3 volte*

Handwritten musical notation on a five-line staff in G major. The melody consists of eighth and sixteenth notes, with a dynamic marking 'fz' (forzando) above the first measure.

Handwritten musical notation on a five-line staff in G major, continuing the melodic line with various note values and slurs.

Handwritten musical notation on a five-line staff in G major, featuring a melodic line with a dynamic marking 'fz'.

Handwritten musical notation on a five-line staff in G major, featuring a series of chords and a melodic line.

Handwritten musical notation on a five-line staff in G major, featuring a series of chords and a melodic line.

Handwritten musical notation on a five-line staff in G major, featuring a series of chords and a melodic line.

Handwritten musical notation on a five-line staff in G major, featuring a melodic line and a double bar line with 'si.' below it.

*Quia respexit.* *fz.*

*All: aperto.* Handwritten musical notation on a five-line staff in G major, starting with 'All: aperto.' and a dynamic marking 'fz.'

Handwritten musical notation on a five-line staff in G major, featuring a melodic line with slurs and dynamic markings.

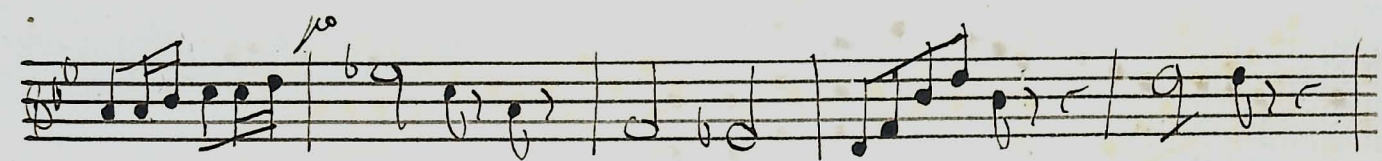
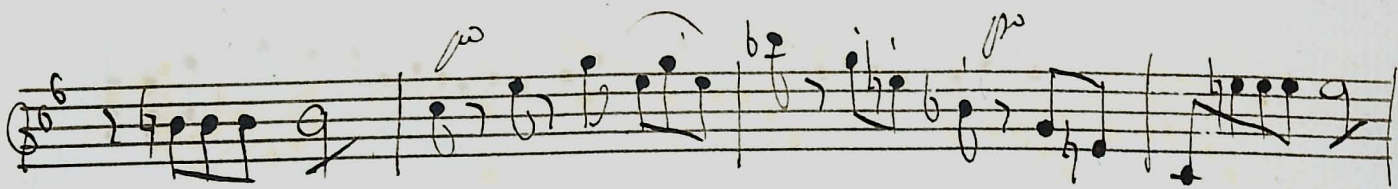
Handwritten musical notation on a five-line staff in G major, featuring a melodic line with slurs and dynamic markings.

*crisp.*

Handwritten musical score for a piece in G major. The score consists of ten systems, each with a treble and bass staff. The melody is written in the treble staff, and the accompaniment is in the bass staff. The piece is marked with various dynamics and articulations:

- System 1:** Treble staff starts with a melody. Bass staff has a simple accompaniment. Dynamics include *tr* and *pp*.
- System 2:** Treble staff continues the melody. Bass staff has a more active accompaniment. Dynamics include *tr* and *pp*.
- System 3:** Treble staff continues the melody. Bass staff has a more active accompaniment. Dynamics include *tr* and *pp*.
- System 4:** Treble staff continues the melody. Bass staff has a more active accompaniment. Dynamics include *tr* and *pp*.
- System 5:** Treble staff continues the melody. Bass staff has a more active accompaniment. Dynamics include *tr* and *pp*.
- System 6:** Treble staff continues the melody. Bass staff has a more active accompaniment. Dynamics include *tr* and *pp*.
- System 7:** Treble staff continues the melody. Bass staff has a more active accompaniment. Dynamics include *tr* and *pp*.
- System 8:** Treble staff continues the melody. Bass staff has a more active accompaniment. Dynamics include *tr* and *pp*.
- System 9:** Treble staff continues the melody. Bass staff has a more active accompaniment. Dynamics include *tr* and *pp*.
- System 10:** Treble staff continues the melody. Bass staff has a more active accompaniment. Dynamics include *tr* and *pp*.

*molte*





Handwritten musical notation on a single staff. The music begins with a treble clef and a key signature of one flat. It features a melodic line with various dynamics including *pp*, *fr*, *sfz*, and *p*. The notation includes eighth and sixteenth notes, some with slurs and accents.

Handwritten musical notation on a single staff. It continues the melodic line from the previous staff, featuring dynamics such as *sfz* and *p*. The notation includes eighth and sixteenth notes, some with slurs and accents.

Handwritten musical notation on a single staff. It continues the melodic line, featuring dynamics such as *p* and *sfz*. The notation includes eighth and sixteenth notes, some with slurs and accents.

Handwritten musical notation on a single staff. It includes a *cresc.* marking above the staff. The melodic line features dynamics such as *sfz* and *p*. The notation includes eighth and sixteenth notes, some with slurs and accents.

Handwritten musical notation on a single staff. It continues the melodic line, featuring dynamics such as *p* and *sfz*. The notation includes eighth and sixteenth notes, some with slurs and accents.

Handwritten musical notation on a single staff. It continues the melodic line, featuring dynamics such as *p* and *sfz*. The notation includes eighth and sixteenth notes, some with slurs and accents.

Handwritten musical notation on a single staff. It continues the melodic line, featuring dynamics such as *p* and *sfz*. The notation includes eighth and sixteenth notes, some with slurs and accents.

*Quia fecit.*

Handwritten musical notation on a single staff. It begins with the tempo marking *Andante*. The melodic line features dynamics such as *p* and *sfz*. The notation includes eighth and sixteenth notes, some with slurs and accents.

Handwritten musical notation on a single staff. It continues the melodic line, featuring dynamics such as *p* and *sfz*. The notation includes eighth and sixteenth notes, some with slurs and accents.

Handwritten musical notation on a single staff. It continues the melodic line, featuring dynamics such as *sfz* and *sotto voce*. The notation includes eighth and sixteenth notes, some with slurs and accents.

Handwritten musical score for the first system, consisting of four staves. The notation includes various notes, rests, and dynamic markings such as 'pmo' and 's.'.

*Et misericordis.*

*All.<sup>o</sup> Maestoso.*

*Volterris*





A handwritten musical score consisting of ten staves. The notation includes various rhythmic values, accidentals, and dynamic markings. The first staff begins with a treble clef and a common time signature. The second staff has a handwritten 'A' above the first measure and a 'p' above the second measure. The third staff has a 'b' above the second measure and a 'p' above the eighth measure. The fourth staff has a 'p' above the first measure and an 'A' above the eighth measure. The fifth staff has an 'A' above the eighth measure. The sixth staff has a 'p' above the first measure. The seventh staff has a 'cresc.' marking above the eighth measure. The eighth staff has a 'p' above the first measure. The ninth staff has an 'A' above the first measure and another 'A' above the eighth measure. The tenth staff has an 'A' above the first measure and another 'A' above the eighth measure. The music is written in a style typical of a composer's sketch, with some corrections and erasures visible.



Handwritten musical notation on a single staff, featuring a treble clef and various notes with stems. Handwritten annotations 'h' and 'A' are present above the staff.

Handwritten musical notation on a single staff, featuring a treble clef and various notes with stems. Handwritten annotations 'h' and 'A' are present above the staff.

Handwritten musical notation on a single staff, featuring a treble clef and various notes with stems. Handwritten annotations 'h' and 'A' are present above the staff.

Handwritten musical notation on a single staff, featuring a treble clef and various notes with stems. Handwritten annotations 'h' and 'A' are present above the staff.

Handwritten musical notation on a single staff, featuring a treble clef and various notes with stems. Handwritten annotations 'h' and 'A' are present above the staff.

Handwritten musical notation on a single staff, featuring a treble clef and various notes with stems. Handwritten annotations 'h' and 'A' are present above the staff.

Handwritten musical notation on a single staff, featuring a treble clef and various notes with stems. Handwritten annotations 'h' and 'A' are present above the staff.

Handwritten musical notation on a single staff, featuring a treble clef and various notes with stems. Handwritten annotations 'h' and 'A' are present above the staff.

Handwritten musical notation on a single staff, featuring a treble clef and various notes with stems. Handwritten annotations 'h' and 'A' are present above the staff.

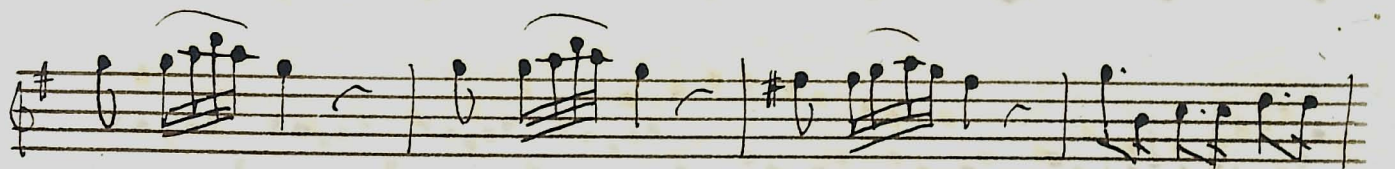
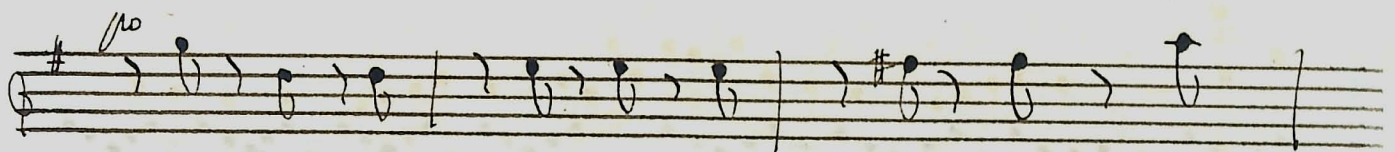
Handwritten musical notation on a single staff, featuring a treble clef and various notes with stems. Handwritten annotations 'h' and 'A' are present above the staff.

Deposuit.

12

Allegretto 3/4

*f* *f* *f* *f* *pmo* *pmo*



*W. Volke*

*Suscipit.*

*fin<sup>o</sup>*

*And. Soffen:*

*Voto Voce*

*fr. Staccato*

*All.<sup>o</sup>* *for*

*pp. stacc.*

*pp*

*for*

*for* *fmo* *pp. cresc.*

*for*

*pp*

*ppmo*

*pp. cresc.*

*fmo*

*Volte*





Gloria

*Maestoso* *for*

*for*

*Solo Voce* *cresc.*

*All.<sup>o</sup> mo*

*for*

*for*

Wolke



Handwritten musical score on six staves. The notation includes various notes, rests, and dynamic markings such as *mf*, *f*, *pp*, and *ppp*. The key signature consists of two sharps (F# and C#). The score concludes with a double bar line and the number '82' written below the staff.

Two empty musical staves. The first staff contains the handwritten text "Auf Deo." written across the lines. The second staff contains a large, decorative flourish or signature.