

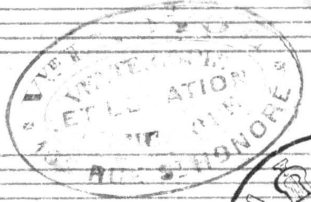


(17)

Bon

La

Rose de St Flour



Violoncelle & Contre-Basse

1^{lle} II^{me} Pupitre

ZW

A 238

Overture

And^{te} mod^{to} $\text{G}=\#\ \#\text{C}$

pp

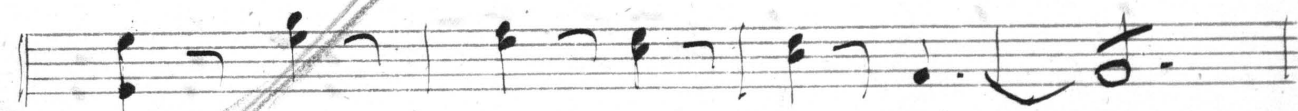
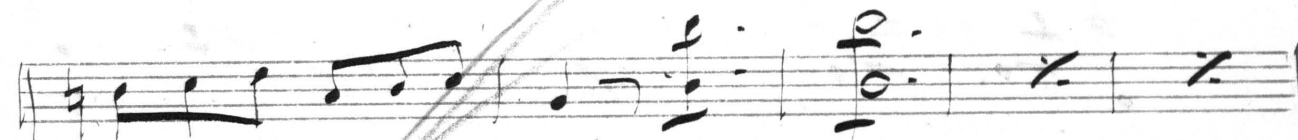
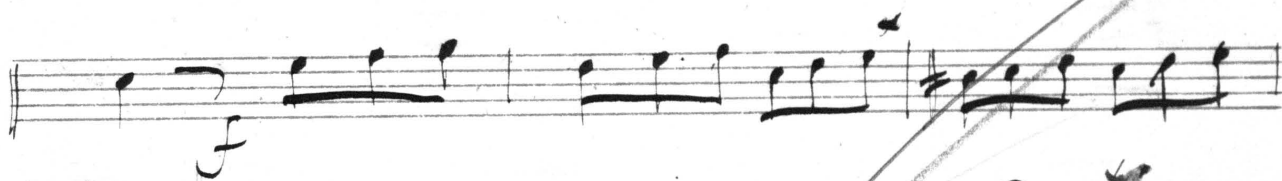
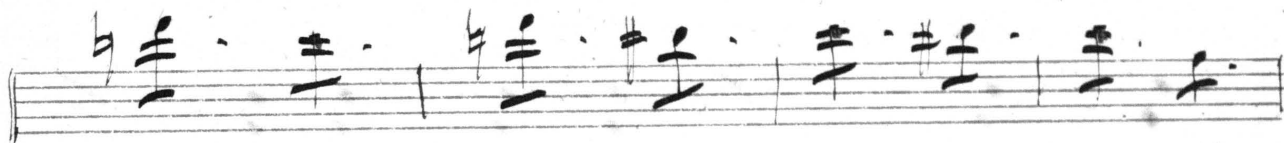
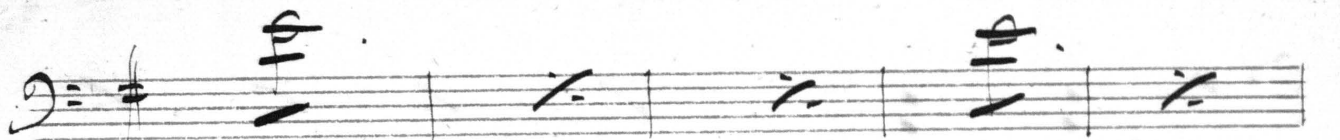
ppiz

arco

ppiz

ppiz

All^o = 13 *rit^{to}* *arco* *sans coupure*



V. S.

Handwritten musical notation on a single staff, featuring a treble clef, a key signature of one sharp (F#), and a common time signature (C). The notation includes several notes with stems and beams, and some notes are marked with a 'p' (piano) dynamic. There are also some diagonal slashes across the staff.

Handwritten musical notation on a single staff, continuing the piece with notes and stems. Some notes have beams connecting them.

Handwritten musical notation on a single staff, featuring a large handwritten 'V' above the staff and a large handwritten 'B' at the end of the staff.

60
~~60~~ *couper*

Handwritten musical notation on a single staff, featuring a treble clef and a common time signature. The notation includes notes and stems, with some diagonal slashes.

Handwritten musical notation on a single staff, featuring a treble clef and a common time signature. The notation includes notes and stems, with some diagonal slashes.

Handwritten musical notation on a single staff, featuring a treble clef and a common time signature. The notation includes notes and stems, with some diagonal slashes.

Handwritten musical notation on a single staff, featuring a treble clef and a common time signature. The notation includes notes and stems, with some diagonal slashes.

Handwritten musical notation on a single staff, featuring a treble clef and a common time signature. The notation includes notes and stems, with some diagonal slashes.

Handwritten musical notation on a single staff, featuring a treble clef and a common time signature. The notation includes notes and stems, with some diagonal slashes.

Handwritten musical notation on a single staff, featuring a treble clef and a common time signature. The notation includes notes and stems, with some diagonal slashes.

Handwritten musical notation on a single staff, featuring a treble clef and a common time signature. The notation includes notes and stems, with some diagonal slashes.

Handwritten musical notation on a single staff, featuring a treble clef and a common time signature. The notation includes notes and stems, with some diagonal slashes.

Handwritten musical notation on a single staff, featuring a treble clef, a key signature of one sharp (F#), and a common time signature (C). The notation includes a series of notes and rests, with a fermata over a note in the second measure.

Handwritten musical notation on a single staff, continuing the piece. It includes dynamic markings *pp* and *arco*, and the instruction *rit.* (ritardando).

Handwritten musical notation on a single staff, featuring a treble clef, a key signature of one sharp (F#), and a common time signature (C). It includes dynamic markings *pp* and *arco*.

Handwritten musical notation on a single staff, featuring a treble clef, a key signature of one sharp (F#), and a common time signature (C). It includes dynamic markings *pp* and *arco*.

Handwritten musical notation on a single staff, featuring a treble clef, a key signature of one sharp (F#), and a common time signature (C). It includes dynamic markings *pp* and *arco*.

Handwritten musical notation on a single staff, featuring a treble clef, a key signature of one sharp (F#), and a common time signature (C). It includes dynamic markings *pp* and *arco*.

Handwritten musical notation on a single staff, featuring a treble clef, a key signature of one sharp (F#), and a common time signature (C). It includes dynamic markings *pp* and *arco*.

Handwritten musical notation on a single staff, featuring a treble clef, a key signature of one sharp (F#), and a common time signature (C). It includes dynamic markings *pp* and *arco*.

Handwritten musical notation on a single staff, featuring a treble clef, a key signature of one sharp (F#), and a common time signature (C). It includes dynamic markings *pp* and *arco*.

Handwritten musical notation on a single staff, featuring a treble clef, a key signature of one sharp (F#), and a common time signature (C). It includes dynamic markings *pp* and *arco*.

Handwritten musical notation on a single staff, featuring a treble clef, a key signature of one sharp (F#), and a common time signature (C). It includes dynamic markings *pp* and *arco*.

Handwritten musical notation on a single staff, featuring a treble clef, a key signature of one sharp (F#), and a common time signature (C). It includes dynamic markings *pp* and *arco*.

Presto:
f arco

N^o 1. Des tripotées pour moi perristi

All^o = 2 = # # 3/4 = 1  *mf*

p *f* *p*

p

piu

arco

arco

arco Coup!

mf *p* *f*

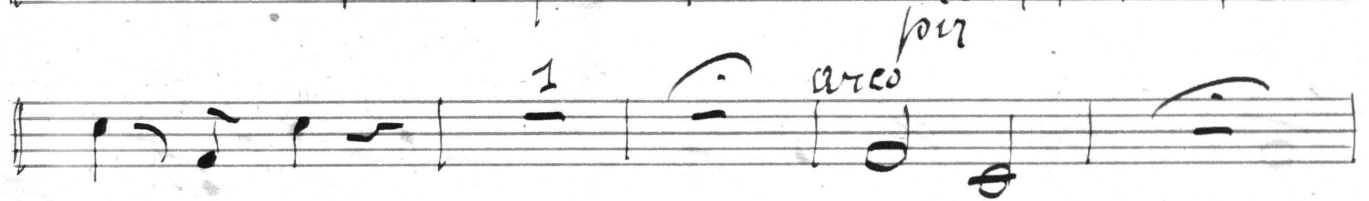
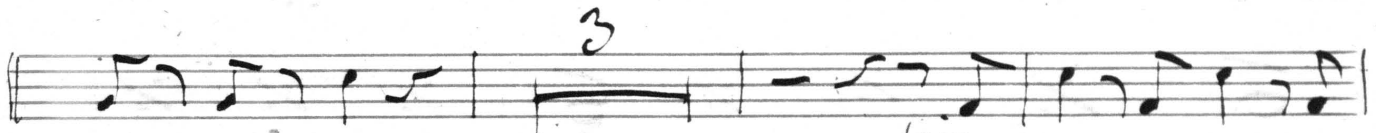
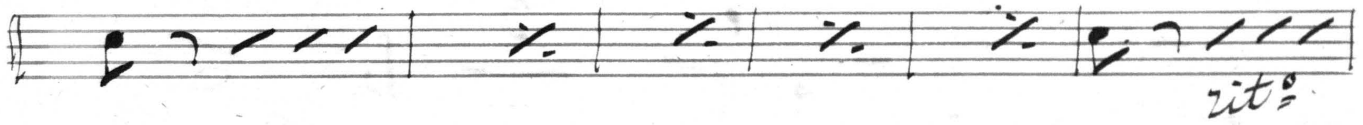
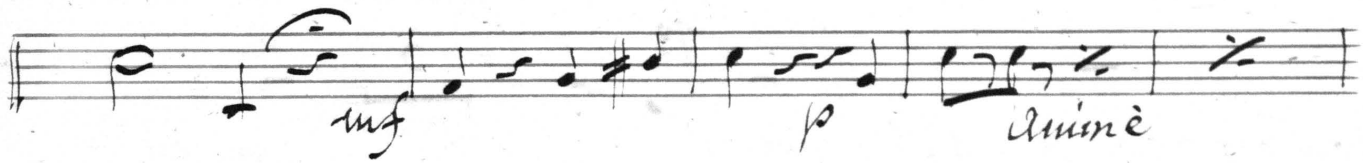
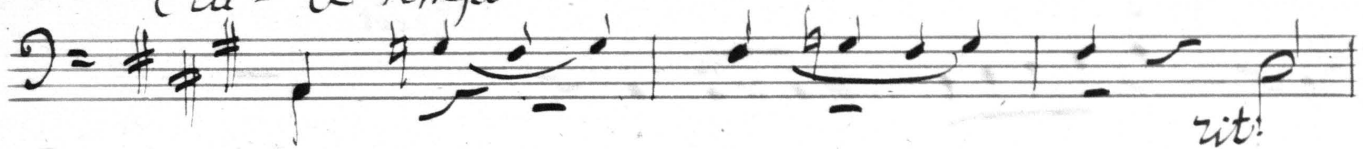
76 = 2.

~~Ca la flattera~~ Ca la flattera

And^{te} = 2 = # # # C *p*

rit. *rit.*

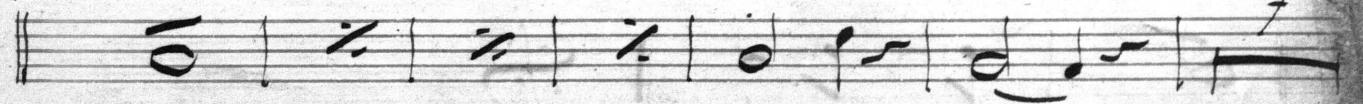
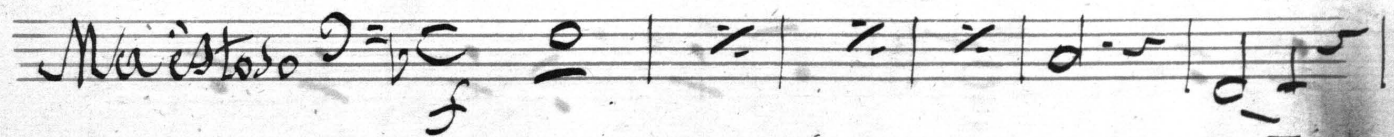
Cell^o à tempo



V^o 3

~~en auto~~

je pourrais la rencontrer



V.S.

très vite

Ritard

ab: que cette mai -

Musical staff with notes and rests, including a dynamic marking *f*.

Musical staff with notes and rests, including a dynamic marking *pp*.

Musical staff with notes and rests, including a dynamic marking *pp* and a tempo marking *Andte*.

Musical staff with notes and rests, including a dynamic marking *pp*.

Musical staff with notes and rests, including a dynamic marking *pp*.

Musical staff with notes and rests, including a dynamic marking *f* and a tempo marking *rit:*.

Musical staff with notes and rests, including a dynamic marking *f*.

Musical staff with notes and rests, including a dynamic marking *pp*.

Musical staff with notes and rests, including a dynamic marking *pp*.

Musical staff with notes and rests, including a dynamic marking *f* and a tempo marking *Arco*.

Musical staff with notes and rests, including a dynamic marking *f*.

Musical staff with notes and rests, including a dynamic marking *f*.

Musical staff with notes and rests, including a dynamic marking *f*.

96 = 4

un petit baïser manzell' pierrette

All^o $\text{♩} = \frac{2}{4}$ *dim*

f *p*

cresce

p

f

f

Dim

f

f

Handwritten musical notation on a single staff.

Handwritten musical notation on a single staff.

Handwritten musical notation on a single staff.

Handwritten musical notation on a single staff with the annotation *Dim* written below.

Handwritten musical notation on a single staff with the annotation *p* written below.

Handwritten musical notation on a single staff.

Handwritten musical notation on a single staff.

Sans compare

Cresc

Handwritten musical notation on a single staff with the annotation *1* above and *p* below.

pour

Handwritten musical notation on a single staff with the annotation *1* above.

Handwritten musical notation on a single staff with the annotation *Arco* written below.

Handwritten musical notation on a single staff.

Handwritten musical notation on a single staff.

Handwritten musical notation on a single staff, featuring a treble clef, a key signature of one sharp (F#), and a 6/8 time signature. The notation includes eighth and sixteenth notes, rests, and a double bar line at the end.

Handwritten musical notation on a single staff, continuing the piece with eighth and sixteenth notes and rests.

Handwritten musical notation on a single staff, featuring a treble clef, a key signature of one sharp (F#), and a 6/8 time signature. The notation includes eighth and sixteenth notes, rests, and a double bar line at the end.

Handwritten musical notation on a single staff, featuring a treble clef, a key signature of one sharp (F#), and a 6/8 time signature. The notation includes eighth and sixteenth notes, rests, and a double bar line at the end.

Handwritten musical notation on a single staff, featuring a treble clef, a key signature of one sharp (F#), and a 6/8 time signature. The notation includes eighth and sixteenth notes, rests, and a double bar line at the end. Dynamic markings *f* and *pp* are present.

Handwritten musical notation on a single staff, featuring a treble clef, a key signature of one sharp (F#), and a 6/8 time signature. The notation includes eighth and sixteenth notes, rests, and a double bar line at the end. Dynamic markings *f* and *pp* are present.

Handwritten musical notation on a single staff, featuring a treble clef, a key signature of one sharp (F#), and a 6/8 time signature. The notation includes eighth and sixteenth notes, rests, and a double bar line at the end. Dynamic markings *f* and *pp* are present. The tempo marking *Presto* is written above the staff.

Handwritten musical notation on a single staff, featuring a treble clef, a key signature of one sharp (F#), and a 6/8 time signature. The notation includes eighth and sixteenth notes, rests, and a double bar line at the end.

Handwritten musical notation on a single staff, featuring a treble clef, a key signature of one sharp (F#), and a 6/8 time signature. The notation includes eighth and sixteenth notes, rests, and a double bar line at the end.

Handwritten musical notation on a single staff, featuring a treble clef, a key signature of one sharp (F#), and a 6/8 time signature. The notation includes eighth and sixteenth notes, rests, and a double bar line at the end.

Handwritten musical notation on a single staff, featuring a treble clef, a key signature of one sharp (F#), and a 6/8 time signature. The notation includes eighth and sixteenth notes, rests, and a double bar line at the end.

Handwritten musical notation on a single staff, featuring a treble clef, a key signature of one sharp (F#), and a 6/8 time signature. The notation includes eighth and sixteenth notes, rests, and a double bar line at the end.

N^o: 5.

mais C'est egal. Sortons

All^{to} 2/4 *2* *2* *1*
2 *2* *1*
2 *2* *1*
2 *2* *1*

arco *Anime*

fz *1*

fz *1*

fz *1*

fz *1*

fz *1*

fz *1*

à tempo

rit

pizz
pizz

arco

No. 6.

La petite Chansonnette

En fa

All^{to}

mf

pp

mf



- 2
- 3
- 4
- 5
- 7
- 8
- 9
- 10
- 11
- 12
- 13
- 14
- 15

f

Final, Voici mon gage

Handwritten musical notation on a single staff, starting with a treble clef, a key signature of one flat (B-flat), and a common time signature (C). The first measure contains a whole note chord, followed by a measure with a whole note chord and a fermata. The piece concludes with a final whole note chord.

Handwritten musical notation on a single staff, continuing from the previous system. It begins with a whole note chord, followed by a measure with a whole note chord and a fermata. The piece concludes with a final whole note chord.

Handwritten musical notation on a single staff, continuing from the previous system. It begins with a whole note chord, followed by a measure with a whole note chord and a fermata. The piece concludes with a final whole note chord.

Handwritten musical notation on a single staff, continuing from the previous system. It begins with a whole note chord, followed by a measure with a whole note chord and a fermata. The piece concludes with a final whole note chord.

Handwritten musical notation on a single staff, continuing from the previous system. It begins with a whole note chord, followed by a measure with a whole note chord and a fermata. The piece concludes with a final whole note chord.

Handwritten musical notation on a single staff, continuing from the previous system. It begins with a whole note chord, followed by a measure with a whole note chord and a fermata. The piece concludes with a final whole note chord.

Handwritten musical notation on a single staff, continuing from the previous system. It begins with a whole note chord, followed by a measure with a whole note chord and a fermata. The piece concludes with a final whole note chord.

Handwritten musical notation on a grand staff (treble and bass clefs). The piece concludes with a final whole note chord. The tempo marking "All to " is written above the final measure.

Handwritten musical notation on a grand staff (treble and bass clefs). The piece concludes with a final whole note chord.

Handwritten musical notation, first system. It consists of two staves. The upper staff begins with a treble clef, a key signature of one flat (B-flat), and a common time signature (C). The music features a melodic line with slurs and a bass line with whole notes. There are two measures with a double bar line and a repeat sign.

Handwritten musical notation, second system. It consists of two staves. The upper staff continues the melodic line with slurs. The lower staff continues the bass line with whole notes.

Handwritten musical notation, third system. It consists of two staves. The upper staff continues the melodic line. The lower staff continues the bass line. A diagonal line is drawn across the system, crossing the upper staff.

Handwritten musical notation, fourth system. It consists of a single staff. The music continues with a melodic line. A diagonal line is drawn across the system, crossing the staff.

Handwritten musical notation, fifth system. It consists of a single staff. The music continues with a melodic line. A diagonal line is drawn across the system, crossing the staff.

Handwritten musical notation, sixth system. It consists of a single staff. The music continues with a melodic line. A diagonal line is drawn across the system, crossing the staff.

Handwritten musical notation, seventh system. It consists of a single staff. The music continues with a melodic line. A diagonal line is drawn across the system, crossing the staff.

Handwritten musical notation, eighth system. It consists of a single staff. The music continues with a melodic line. A diagonal line is drawn across the system, crossing the staff. The number '3' is written above the staff.

Handwritten musical notation, ninth system. It consists of a single staff. The music continues with a melodic line. The number '2' is written below the staff.

Handwritten musical notation, tenth system. It consists of a single staff. The music continues with a melodic line. The number '3' is written above the staff.

Caprice du

Finis

all^o

loure

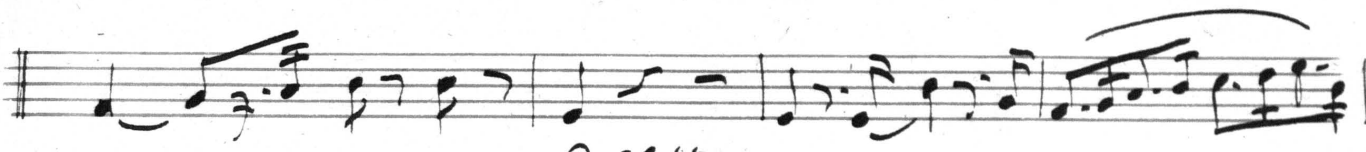
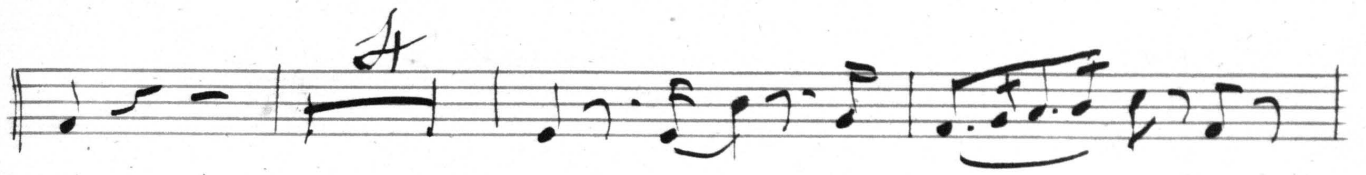
2 3 4 5 6 7

3

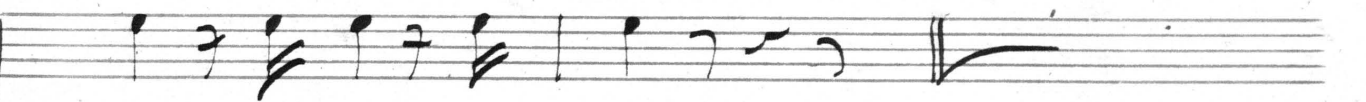
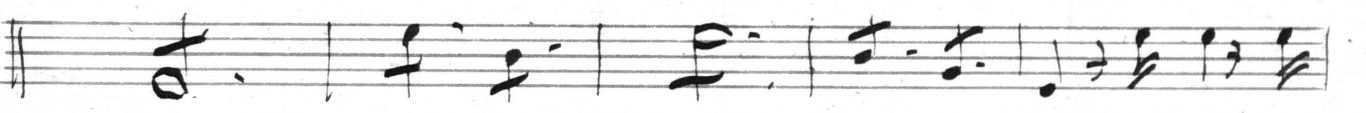
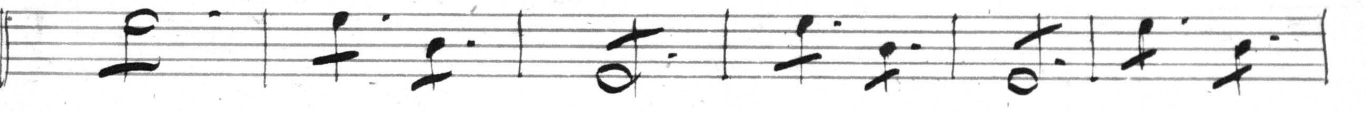
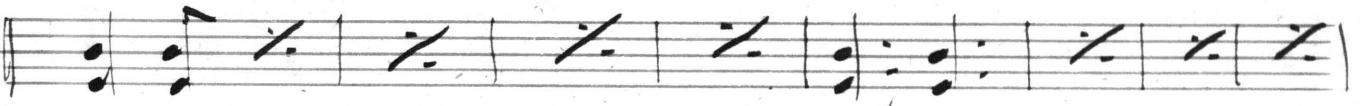
10

Mémoire $\frac{4}{4}$ $\text{D}=\sharp$ C

A



All^{to}



f *in*...

