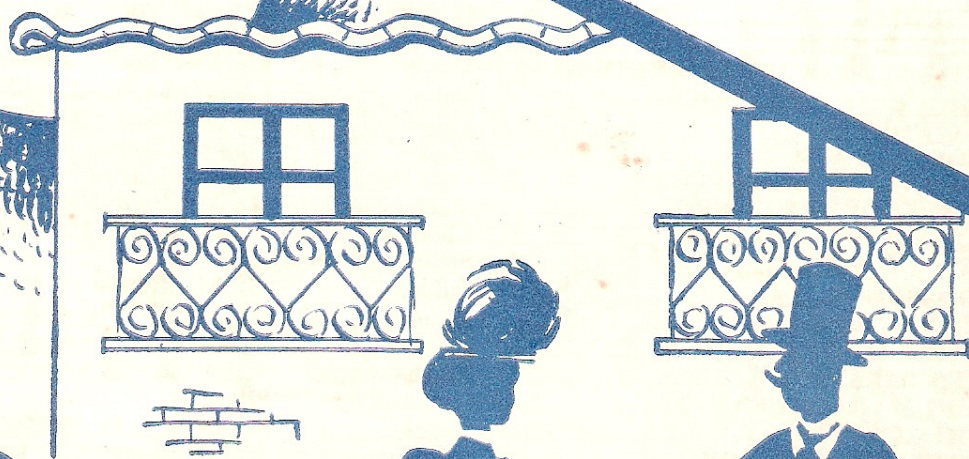


Ernesto Nazareth

Dedicado a minha prima Aracy Nazareth Montel

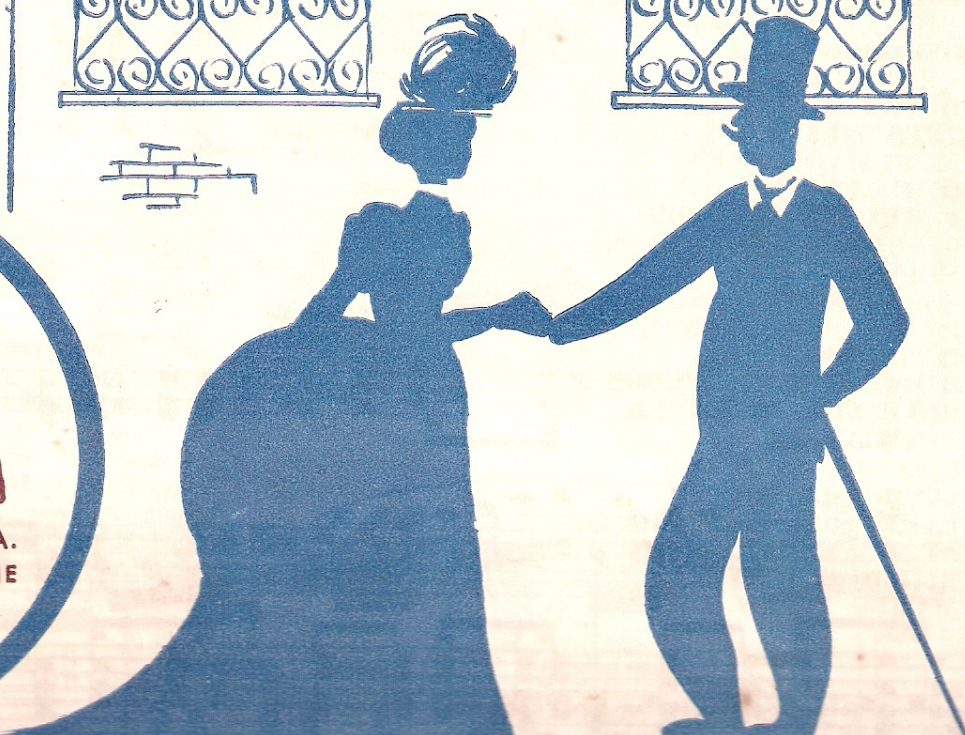
Cavaquinho Porque Choras? Chôro



N. 3308



Editorial Mangione S. A.
Sucessora de E. S. MANGIONE



Dedicado a minha prima Aracy Nazareth Montel

CAVAQUINHO PORQUE CHORAS?

Chôro

ERNESTO NAZARETH

PIANO

The first system of the piano accompaniment is written in 2/4 time with a key signature of two flats (B-flat and E-flat). It begins with a piano (*f*) dynamic. The right hand features a melodic line with eighth-note patterns and a fermata over the first measure. The left hand provides a steady accompaniment of eighth notes.

The second system continues the melodic and harmonic development. The right hand has a fermata over the first measure. The left hand maintains the eighth-note accompaniment.

The third system shows further melodic movement in the right hand, with a fermata over the first measure. The left hand accompaniment remains consistent.

The fourth system concludes with a double bar line. The right hand has a fermata over the first measure. The word "FIM" is written below the staff. The system ends with a repeat sign and first/second endings.

The fifth system continues the piece with a fermata over the first measure. The right hand has a melodic line with a fermata over the first measure. The left hand accompaniment continues.

The sixth system concludes the piece with a double bar line. The right hand has a fermata over the first measure. The word "sec" is written below the staff, followed by a fermata and the word "rit." indicating a ritardando.

8

a tempo

8

1 2

Dal S al

8

p

8

ff

8

p

cresc.

8

f *ff*