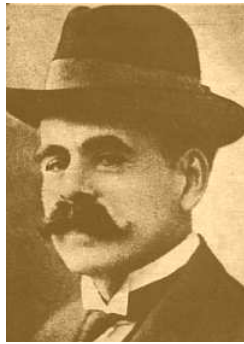


*Piano Solo.*

*Ángel Villalda*

1861 - 1919



*Qué Hacés  
Chamberguito?..  
Tango Criollo*



# Qué Hacés, Chamberguito?...

Tango Criollo

Á. G. Villoldo

Piano *mf*

5

9

13

*Fine*

17

*scherezando*

*p*

21 *scherzando*

Pno.

25 *scherzando*

Pno.

29 *scherzando*

Pno.

33

Pno.

37

Pno.

41

Pno.

45

Pno.

ff f

Detailed description: This system contains measures 45 through 48. The music is for piano (Pno.) and is written in treble and bass clefs. Measure 45 starts with a treble clef and a 7/8 time signature. The first two measures (45-46) feature a forte fortissimo (ff) dynamic. The last two measures (47-48) feature a forte (f) dynamic. The piece concludes with a double bar line and a repeat sign.

49

Pno.

*scherzando*

p

Detailed description: This system contains measures 49 through 52. The music is for piano (Pno.) and is written in treble and bass clefs. Measure 49 is marked with the tempo instruction *scherzando*. The dynamic is piano (p). The piece concludes with a double bar line and a repeat sign.

53

Pno.

*scherzando*

p

Detailed description: This system contains measures 53 through 56. The music is for piano (Pno.) and is written in treble and bass clefs. Measure 53 is marked with the tempo instruction *scherzando*. The dynamic is piano (p). The piece concludes with a double bar line and a repeat sign.

57

Pno.

*scherzando*

p

Detailed description: This system contains measures 57 through 60. The music is for piano (Pno.) and is written in treble and bass clefs. Measure 57 is marked with the tempo instruction *scherzando*. The dynamic is piano (p). The piece concludes with a double bar line and a repeat sign.

61

Pno.

*scherzando*

p f

D.C. al Fine

Detailed description: This system contains measures 61 through 64. The music is for piano (Pno.) and is written in treble and bass clefs. Measure 61 is marked with the tempo instruction *scherzando*. The dynamic starts as piano (p) and becomes forte (f) in the final measure. The piece concludes with a double bar line and the instruction *D.C. al Fine*.