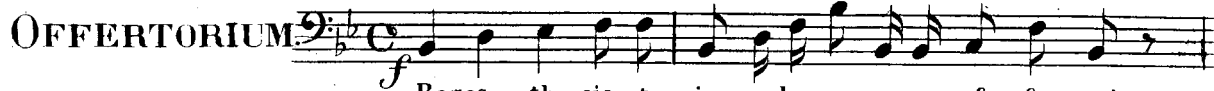


Andante.



Re = ges tharsis et in = sulae mune = ra of = fe = rent



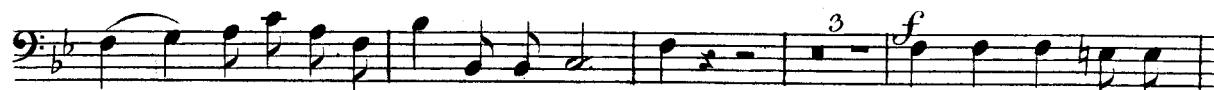
Re = ges a = rabum et sa = ba do = na ad = du = cent mu = nera of = ferent



do = na ad = ducent Re = ges tharsis et insulae mune = ra offerent



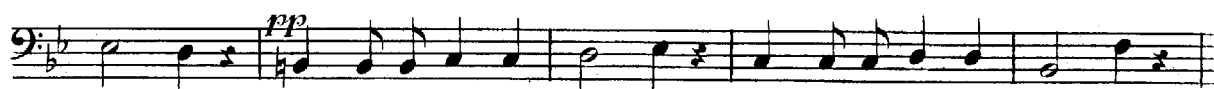
mu = nera of = ferent, et do = na adducent reges thar = sis re = ges a = rabum et



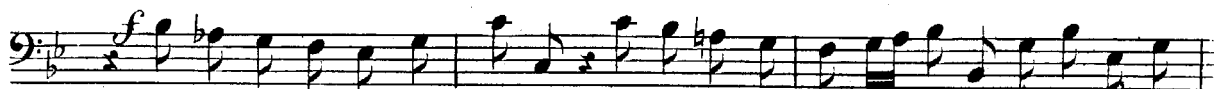
sa = ba et saba do = na ad = du = cent Re = ges thar = sis et



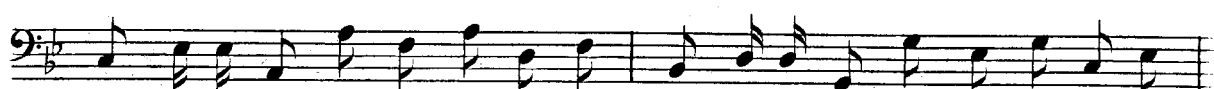
in = sulae mune = ra of = fe = rent mu = nera of = ferent do = na ad = du = cent



re = ges et a = do = ra = bunt e = um et a = do = ra = bunt e = um



omnes omnes re = ges terrae omnes omnes re = ges terrae omnes gentes



ser = vient e = i om = nes gen = tes ser = vient e = i om = nes gen = tes



ser = vient e = i ser = vient e = i omnes gentes omnes gentes

(5050.)

Verlag von Tobias Haslinger in Wien.

BASSO.

p
 ser = vi-ent e = i ser = = vi-ent e = = i

f
 Re = ges tharsis et in = su-lae mune-ra of = ferent, re = ges a = rabum et
 sa = ba do = na ad = du = cent mu = ne-ra of = ferent do = na ad = ducent

Re = ges tharsis et in = sulae mu = nera of = ferent

mu = ne-ra of = ferent et do = na ad = ducent re = ges thar = sis re = ges
 a = rabum re = ges a = rabum et sa = ba do = na ad = du =

pp *Cres:*
 = cent, et a = do = rabunt e = um omnes re = ges ter = rae et

f
 ser = vient e = i omnes gen = tes; al = le = lu = ja al = le = lu = ja al = le =
 = lu = ja al = le = lu = ja al = le = lu = ja al = le = lu = ja al = le =
 = lu = ja al = le = lu = ja al = le = lu = ja al = le = lu = ja al = le = lu = ja

p *f* *p*
 al = le = lu = ja al = le = lu = ja al = le = lu = ja al = le = lu = ja .