

MENUET I et II en DO MAJEUR

(De la "Suite en Do Majeur" - 1er livre de Pièces de Clavecin - 1704)

pour Trompette et Orgue

Score (01':45")

Louis - Nicolas Clérambault (1676 - 1749)

Arr. Michel Rondeau

Menuet I ♩ = 120

Trumpet in C

Organ

C Tpt.

Org.

17 Menuet II

C Tpt.

Org.

Fine

25

C Tpt.

Org.

D.C. al Fine

MENUET I et II en DO MAJEUR

(De la "Suite en Do Majeur" - 1er livre de Pièces de Clavecin - 1704)

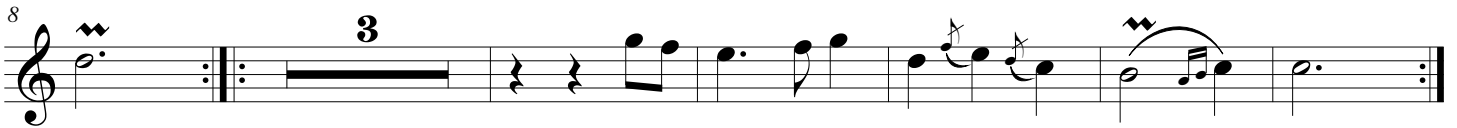
pour Trompette et Orgue

Trompette en Do

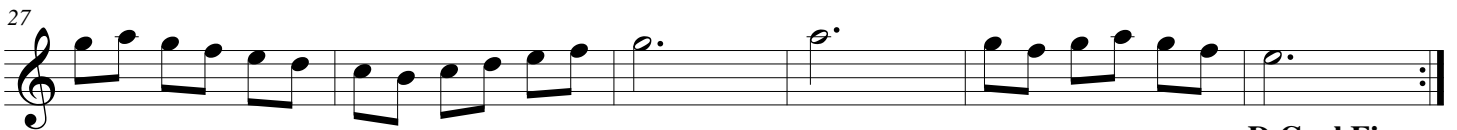
Louis - Nicolas Clérambault (1676 - 1749)

Arr. Michel Rondeau

Menuet I ♩ = 120



Fine



D.C. al Fine

MENUET I et II en DO MAJEUR

(De la "Suite en Do Majeur" - 1er livre de Pièces de Clavecin - 1704)
pour Trompette et Orgue

Louis - Nicolas Clérambault (1676 - 1749)

Arr. Michel Rondeau

Orgue

Trumpet in C

Orgue

Menuet I ♩ = 120

Musical score for Menuet I, measures 1-8. The Trumpet in C part is in the upper staff, and the Organ part is in the lower staff. The organ part consists of two staves (treble and bass). The tempo is marked as ♩ = 120. The key signature is one sharp (F#) and the time signature is 3/4. The organ part features a rhythmic accompaniment with chords and moving lines in both hands.

C Tpt.

Org.

Musical score for Menuet I, measures 9-16. The C Trumpet part is in the upper staff, and the Organ part is in the lower staff. The organ part continues with its accompaniment. The C Trumpet part has a melodic line with some grace notes.

C Tpt.

Org.

Menuet II

Fine

Musical score for Menuet II, measures 17-24. The C Trumpet part is in the upper staff, and the Organ part is in the lower staff. The organ part features a more active bass line with eighth notes. The piece concludes with a 'Fine' marking.

C Tpt.

Org.

D.C. al Fine

Musical score for Menuet II, measures 25-32. The C Trumpet part is in the upper staff, and the Organ part is in the lower staff. The organ part continues with its accompaniment. The C Trumpet part has a melodic line. The piece concludes with a 'D.C. al Fine' marking.