

g.^o Cassa et Cimbales

Overture

All.^o Maestoso

2/4 *f* *all.^o non troppo*

f

25 *all.^o* *4* *f*

f *Solo g.^o C:* *1 2 3 4*

f *5 6 7 8 9 10 11 12 13 14 15 16 17 18 19*

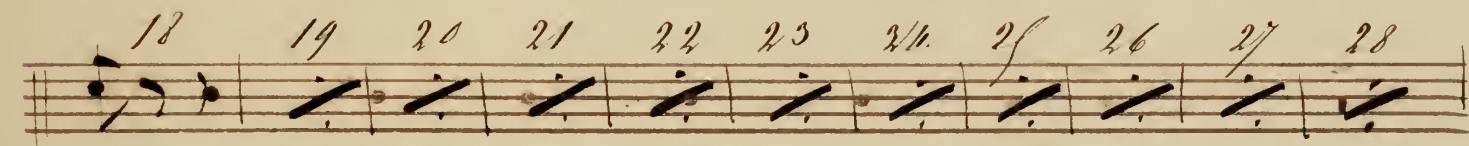
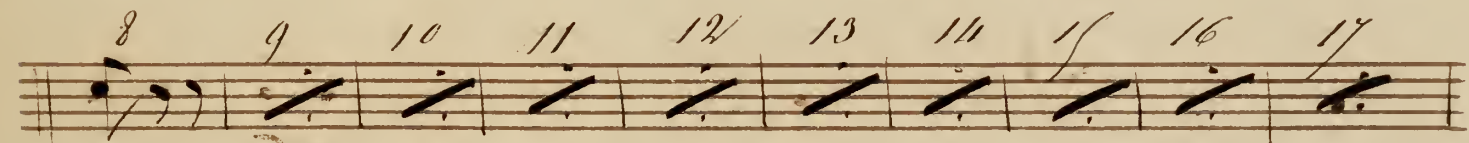
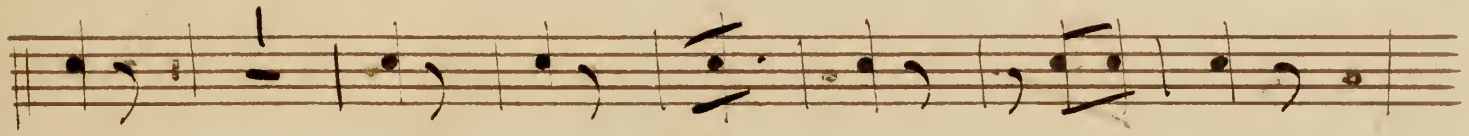
g.^o et Cimb

f *1 2 3 4 5 6 7 8 9 10 11*

12 13 14 15 *f* *2 3*

f

A page of handwritten musical notation on ten staves. The notation includes notes, rests, and slurs. The first staff begins with a bass clef and a common time signature. The music features several slurs with numbers above them: 3, 15, 31, 2, 3, 2, 31, 2, 2, 2, 3, 4, 5, 6, 7, 8, 9, 10, 11, 12. Dynamic markings such as *f* and *fz* are present. The handwriting is in dark ink on aged paper.



GROSSE CAISSE.
1^{er} ACTE TACET..

2^e ACTE.

All^o

Musical staff with bass clef, dynamic *f*, and rhythmic notation.

Musical staff with bass clef, dynamic *f*, and rhythmic notation. Includes measure numbers 25 and 1, and the marking G.C.

Musical staff with bass clef, dynamic *f*, and rhythmic notation.

Musical staff with bass clef, dynamic *f*, and rhythmic notation. Includes measure number 9.

Musical staff with bass clef, dynamic *f*, and rhythmic notation. Includes section markers A, B, and C, and measure numbers 19 and 15. Marking G.C. is present.

Musical staff with bass clef, dynamic *f*, and rhythmic notation. Includes section marker D and measure number 15. Lyrics: "raison la leçon de la raison" and "raison la leçon de la raison".

Musical staff with bass clef, dynamic *f*, and rhythmic notation.

Musical staff with bass clef, dynamic *f*, and rhythmic notation. Includes markings "Récit. All^o" and measure numbers 1, 8, 4, 5, 7.

All^o mod^{to}

Musical staff with bass clef, dynamic *f*, and rhythmic notation.

Musical staff with bass clef, dynamic *f*, and rhythmic notation. Includes measure number 1.

Musical staff with bass clef, dynamic *f*, and rhythmic notation. Includes section markers A, B, and C, and measure numbers 2, 4, 3. Marking *p* is present.

Musical staff with bass clef, dynamic *f*, and rhythmic notation. Includes section marker D and measure number 15. Lyrics: "au laboureur ac_tif qui fé.con_de son sein". Marking G.C. is present.

Musical staff with bass clef, dynamic *f*, and rhythmic notation.

Dantes Fra Diavolo au n^o 1

GROSSE CAISSE.

2 4 3

p *p* *f*

1. 2.

6

And^{te} 48 14 B 2 All^o All^o 3

All^o mod^o All^o 51 96

And^{te} 29 All^o mod^o All^o 9 7

G.C.

2 7

f *f*

12 3 8

ah viens le prendre à t'elle dit courons

n^o 1

All^o

f

p *f*

6

f

Le reste du Ballet tacet

All^o non troppo.

1-0

G.C.

GROSSE CAISSE.



All^o 158

G.C. 5 1 15

f f f

cres. G.C. 1 2 3 4

5 6 1 2 3 4 5 6 1

2 3 4 5 6 7 1 11

All^o 6

G.C. p

10 A.G.C. p

8 f p

10 B.G.C. p

10 C.G.C. f

1 1

D^{Plus animé.} 1 1 3

f f f

1 1 3

f f f

GROSSE CAISSE.

All^o

First staff of music, bass clef, 2/4 time signature, starting with a repeat sign.

Second staff of music, bass clef, with fingerings 1, 2, 3, 4, 5, 6, 7 and 1, 1, 1.

Third staff of music, bass clef, with fingerings 1, 1, 1, 1, 2, 3, 4, 5, 6, 7 FIN.

3^e ACTE.

And^{te}

First staff of music for Act 3, bass clef, 6/8 time signature, starting with a forte (f) dynamic.

Second staff of music, bass clef, with fingerings 1, 1, 2, 3, 4 and forte (f) dynamics.

Third staff of music, bass clef, with fingerings 5, 6, 1 and a circled 'Bis' annotation.

Fourth staff of music, bass clef, continuing the rhythmic pattern.

All^o 4 1 2 3 4 5 5 1 2 3 4 5 1 1 11 G. C. seule.

Fifth staff of music, bass clef, 3/8 time signature, with forte (f) dynamics.

Sixth staff of music, bass clef, with fingerings 3, 4, 5, 6, 7, 8, 9, 10, 11, 12, 13, 14, 15, 16, 17, 18, 19, 20, 21 and forte (f) dynamics.

Seventh staff of music, bass clef, with fingerings 22, 23, 24, 25, 26, 27, 28, 29, 30, 31, 32, 33, 34 and forte (f) dynamics.

Eighth staff of music, bass clef, with letter annotations B, C, D and fingerings 3, 3, 7, 15, 3, 3, 1, 2, 3, 4, 5, 6, 7, 8, 9, 40, 24.

Ninth staff of music, bass clef, with letter annotations E, F, G, H and fingerings 50, 53, 44, 5, 3, 3, 3.

Tenth staff of music, bass clef, with piano (pp) dynamics and fingerings 1, 2, 3, 4, 5, 6, 7, 8, 9, 10, 11, 12.

All^o non troppo.

GROSSE CAISSE.

All^o 3 35 G.C. *f*

1 *f* *f* *f* *f*

même mouv!

Tacet.

All^o 63 All^o 56 D1 G.C. 1 1 *f* *f*

effroi je ne crains plus a present que pour moi

1 5 1 *f* *f*

E 15 F 6

G 15 H G.C. 10 *f* *f*

1 1 1 *f* FIN

4^e ACTE.

All^o non troppo. 41 41 G.C. *f*

voici la caravane et nos hôtes non

pp *f*

6 4 11 2 *f*

pp *f*

*Arang des notes
comb des*

GROSSE CAISSE. All^orisoluto

Recit 17 102 2

All^ovivace

29 32 A 48 B 55 C 64 D 20 E 28 G.C. 2 2 1

2 3 4 5 6 7 F 28 G.C. 2 2

G 1 1 1 2 3 4 5 6 7 1 1 1

2 3 4 5 6 7 8 9 10 11 12 1 2 2 1 2 3

4 5 6 7 1 2 2 1 2 3 4 5 31 16

Recit 12 44 1 15 40 All^omod^{to} 71 B 42 G.C.seule

C 10 D 5 7 E 19 7 F 22

f G.C. f

FIN

5^eACTE.

Recit 60 All^oanimé 5 15 32 G.C.

je t'ai retrou vé oui par

All^omod^{to} 17 meme mouvt 9 G.C. bis

f bis FIN