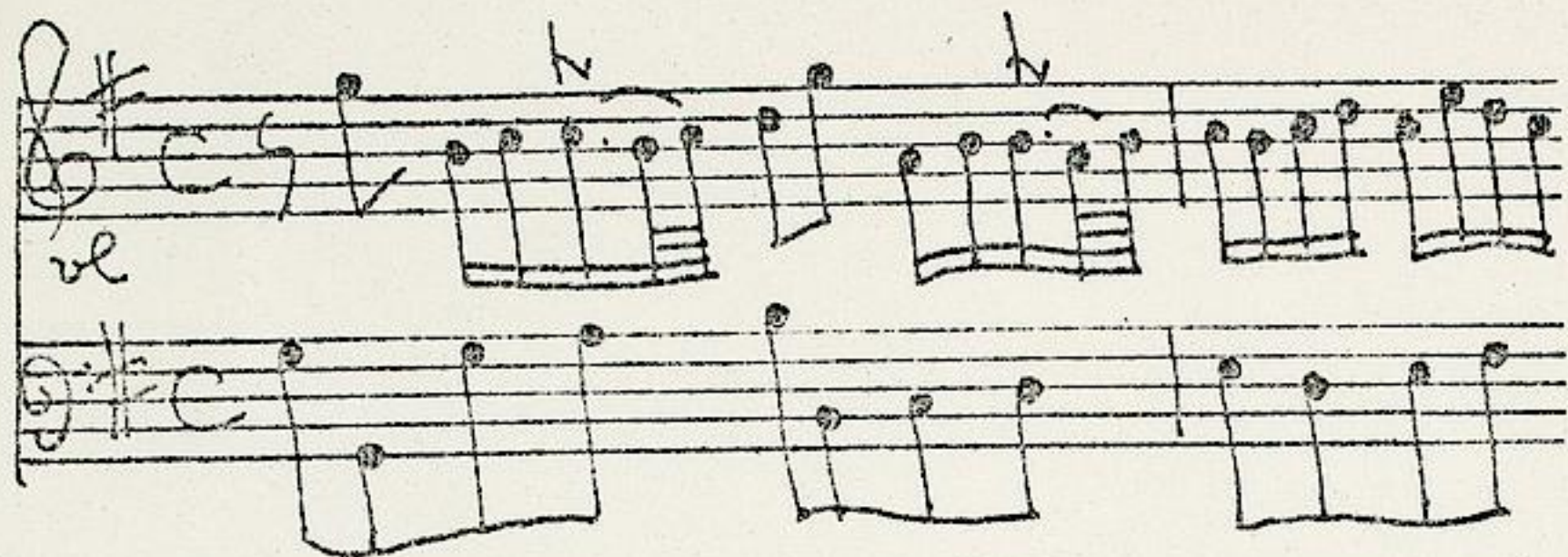


Fasch, Johann Friedrich (1688-1758)

BRD DS Mus.ms 297/1

Sonata. Del Sign: Fasch. / [Stimmbez.:] Flute Travers. / Violino /
Cembalo / (G-dur) [Kopftitel]



Affettuoso C G-dur - Al-
legro C G-dur - Largo
3/4 e-moll - Allegro
3/8 G-dur.

Ms. ca. 1740.

35 x 22 cm.

WZ: Narrenkappe

partitur: 2 Bl.

Alte Sign.: Stempel: L mit Krone. 3867.

Schreiber: J.S. Endler oder Grünewald.

Stimmen vgl. Mus.ms 298/5.



3867

3867

Sonaten.
in
Partitur
von
J. Fusch.

Fol. (27) W. in 3 fasc.

Großherzoglich
Hessische
Hofbibliothek.

fol. (27)

Sonata.

Mus 297

fol. 12

Del Sign. Fasch.

Affettuoso.

Flute Travers. *Affettuoso.*

Violino *Affettuoso.*

Cembalo *Affettuoso.*

Affettuoso.

Allegro.

Handwritten musical notation on three staves, featuring complex rhythmic patterns and melodic lines.

Handwritten musical notation on three staves, continuing the piece with intricate textures.

Handwritten musical notation on three staves, showing a continuation of the musical theme.

Largo.

Handwritten musical notation on three staves, marking the beginning of the *Largo* section.

Handwritten musical notation on three staves, featuring a more melodic and spacious texture.

Handwritten musical notation on three staves, continuing the *Largo* section.

Handwritten musical notation on three staves, concluding the piece with a final cadence.

Großherzoglich
Ressische
Hofbibliothek.

Allegro

A page of handwritten musical notation on aged, yellowed paper. The page features five systems of staves, each containing three staves. The notation is written in black ink and includes various musical symbols such as notes, rests, beams, and clefs. The word "Allegro" is written in a cursive hand at the top left. The paper shows signs of wear, including some staining and irregular edges.



