



DET KONGELIGE BIBLIOTEK
MUSIKAFDELINGEN

N. Faber

Adagio & Rondo for Trumpet
principle. (Part)

C 11, 27

72
C, II, 27.

Adagio & Bonio

for

Solo. principale

meo

Accompagnement of Orchestre

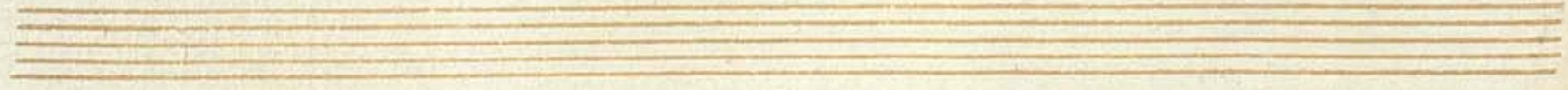
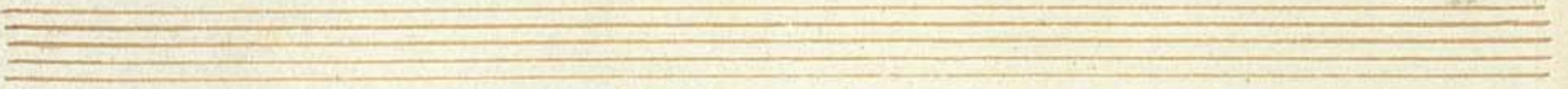
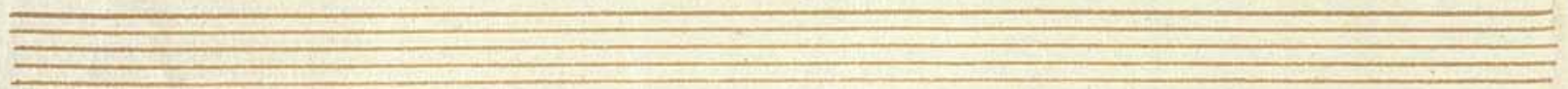
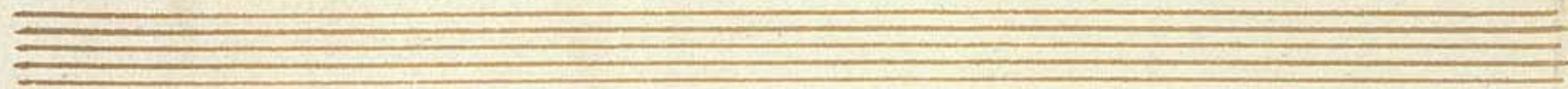
composed

by

M. Faber

Leipzig & Paris for Allart & Co

in Lyon.



Adagio

Pa. 1^o *gch* *principale*

Violino 1^{mo}

Violino 2^{do}

Viola

Flauto 1^{mo}

Flauto 2^{do}

Violon. Solo

Violon. 1^o

Violon. 2^o

Violon. 3^o

Violon. 4^o

Tuba

Tromba

Tromboni

Timpani

This page contains a handwritten musical score on aged, yellowed paper. The score is organized into two systems of five staves each. The notation includes various clefs (treble and bass), time signatures, and complex rhythmic patterns. Dynamic markings such as *Tutti* and *Solo* are present above the staves. The handwriting is in dark ink, and the paper shows signs of age, including foxing and some staining. The first system consists of five staves, and the second system also consists of five staves, with the top staff in the second system containing the *Tutti* and *Solo* markings.

The first system of the handwritten musical score consists of seven staves. The top staff is in treble clef with a key signature of one flat and a 2/4 time signature. It contains a melodic line with various note values including quarter, eighth, and sixteenth notes, as well as rests. The second staff is in treble clef and contains a similar melodic line. The third staff is in treble clef and contains a melodic line with some slurs. The fourth staff is in treble clef and contains a complex, dense texture of sixteenth notes. The fifth staff is in treble clef and contains a melodic line with some rests. The sixth staff is in treble clef and contains a melodic line with some rests. The seventh staff is in bass clef and contains a melodic line with some rests.

The second system of the handwritten musical score consists of seven staves. The top staff is in treble clef with a key signature of one flat and a 2/4 time signature. It contains a melodic line with various note values including quarter, eighth, and sixteenth notes, as well as rests. The second staff is in treble clef and contains a complex, dense texture of sixteenth notes. The third staff is in treble clef and contains a melodic line with some slurs. The fourth staff is in treble clef and contains a complex, dense texture of sixteenth notes. The fifth staff is in treble clef and contains a melodic line with some rests. The sixth staff is in treble clef and contains a melodic line with some rests. The seventh staff is in bass clef and contains a melodic line with some rests.

Handwritten musical score for the first system, consisting of seven staves. The notation includes various note values, rests, and complex rhythmic patterns. A treble clef and a key signature of one sharp (F#) are visible at the beginning.

Handwritten musical score for the second system, consisting of seven staves. The notation continues with similar complexity as the first system. A "Solo" marking is present above the first staff of this system.

Handwritten musical score system 1, consisting of seven staves. The top staff is a vocal line with a treble clef and a key signature of one sharp (F#). The second and third staves are for a piano accompaniment, with the second staff in treble clef and the third in bass clef. The fourth staff is a bass line in bass clef. The fifth and sixth staves are for a second piano accompaniment, with the fifth in treble clef and the sixth in bass clef. The seventh staff is a bass line in bass clef. The music is written in a common time signature (C) and features various rhythmic patterns, including eighth and sixteenth notes, and rests.

Handwritten musical score system 2, consisting of seven staves. The top staff is a vocal line with a treble clef and a key signature of one sharp (F#). The second and third staves are for a piano accompaniment, with the second staff in treble clef and the third in bass clef. The fourth staff is a bass line in bass clef. The fifth and sixth staves are for a second piano accompaniment, with the fifth in treble clef and the sixth in bass clef. The seventh staff is a bass line in bass clef. The music is written in a common time signature (C) and features various rhythmic patterns, including eighth and sixteenth notes, and rests.

A handwritten musical score consisting of ten staves. The notation is in brown ink on aged, yellowed paper. The score is organized into two systems of five staves each. The first system (staves 1-5) begins with a treble clef and a key signature of one sharp (F#). The music features a variety of rhythmic values, including eighth and sixteenth notes, and rests. The second system (staves 6-10) starts with a different clef, possibly a bass clef, and continues the musical piece. The notation includes complex rhythmic patterns and some decorative flourishes. There are some handwritten annotations, such as a double slash with a dot on the left margin and a 'Solo' marking above the sixth staff.

Handwritten musical score on 12 staves. The notation includes treble and bass clefs, time signatures, notes, rests, and dynamic markings. A bracket labeled "bis" spans the first four measures. There are also some handwritten annotations on the left side.

x *per cel du cart me d' h m*
lay de m' s' p' g' l' a' m' t

A handwritten musical score on aged paper, consisting of approximately 15 staves. The notation includes various musical symbols such as notes, rests, and clefs. The lyrics are written in French and are interspersed between the staves. The score is divided into two main sections by a double bar line. The first section contains the first six staves, and the second section contains the remaining nine staves. The handwriting is in dark ink, and the paper shows signs of age and wear.

///

fine x x x

Alla Polacca

Handwritten musical score for "Alla Polacca". The score is written on ten staves. The top staff is labeled "Fagot" (Bassoon) and includes a tempo marking "Allegro" and a time signature of 3/4. The second staff is labeled "Viol. 1." (Violin I) and the third "Viol. 2." (Violin II), both in 3/4 time. The fourth staff is labeled "Viola" in 3/4 time. The fifth staff is labeled "Klarinetten" (Clarinets) and "2^{te}" (2nd), in 3/4 time. The sixth staff is labeled "Violoncello" (Cello) in 3/4 time. The seventh staff is a grand staff for piano accompaniment, with the right hand in 3/4 time and the left hand in 2/4 time. The eighth, ninth, and tenth staves are for strings, with the eighth staff in 3/4 time and the ninth and tenth in 2/4 time. The score is divided into two systems. The first system consists of six staves. The second system consists of four staves. A bracket above the top staff of the second system is labeled "bis". The notation includes various rhythmic values, accidentals, and dynamic markings.

The first system of the handwritten musical score consists of six staves. The top staff is in treble clef with a common time signature (C) and begins with a whole rest followed by a series of sixteenth-note runs. The second staff is in bass clef with a common time signature, featuring a series of chords. The third staff is in bass clef with a common time signature, showing a melodic line. The fourth staff is in bass clef with a common time signature, containing a rhythmic pattern of eighth notes. The fifth staff is in bass clef with a common time signature and contains several whole rests. The sixth staff is in treble clef with a common time signature, featuring a melodic line that ends with a double bar line.

The second system of the handwritten musical score consists of six staves. The top staff is in treble clef with a common time signature (C) and begins with a dynamic marking of *Poco*. It features a melodic line with some rests. The second staff is in bass clef with a common time signature, showing a complex rhythmic pattern. The third staff is in bass clef with a common time signature, featuring a melodic line. The fourth staff is in bass clef with a common time signature, containing a rhythmic pattern. The fifth staff is in bass clef with a common time signature, showing a complex rhythmic pattern. The sixth staff is in treble clef with a common time signature, featuring a melodic line that ends with a double bar line. There are some additional markings, including a *di* marking above the second staff and a *f* marking below the sixth staff.

Handwritten musical score, first system. It consists of six staves. The top staff begins with a treble clef and a key signature of one sharp (F#). The notation includes various rhythmic values such as eighth and sixteenth notes, often beamed together. The second staff features a treble clef and contains more complex rhythmic patterns. The third staff has a treble clef and includes some notes with stems pointing downwards. The fourth staff uses a bass clef and contains rhythmic notation. The fifth staff is a grand staff with a treble clef and contains complex rhythmic figures. The sixth staff has a treble clef and contains rhythmic notation. The system concludes with a double bar line.

Handwritten musical score, second system. It consists of six staves. The top staff begins with a treble clef and a key signature of one sharp (F#). The notation includes various rhythmic values such as eighth and sixteenth notes, often beamed together. The second staff features a treble clef and contains more complex rhythmic patterns. The third staff has a treble clef and includes some notes with stems pointing downwards. The fourth staff uses a bass clef and contains rhythmic notation. The fifth staff is a grand staff with a treble clef and contains complex rhythmic figures. The sixth staff has a treble clef and contains rhythmic notation. The system concludes with a double bar line.

Handwritten musical score, first system. The system consists of six staves. The top staff has a treble clef and a key signature of one sharp (F#). The notation includes various rhythmic values such as eighth and sixteenth notes, and rests. The second and third staves have a bass clef. The fourth and fifth staves have a treble clef. The sixth staff has a bass clef. The music is written in a cursive, historical style.

Handwritten musical score, second system. The system consists of six staves. The top staff has a treble clef and a key signature of one sharp (F#). The notation includes various rhythmic values such as eighth and sixteenth notes, and rests. The second and third staves have a bass clef. The fourth and fifth staves have a treble clef. The sixth staff has a bass clef. The music is written in a cursive, historical style.

Handwritten musical score on 13 staves. The notation includes various clefs (treble and bass), time signatures (9/8 and 3/4), and dynamic markings such as *p* (piano) and *piu. p* (pianissimo). The score features complex rhythmic patterns, including sixteenth and thirty-second notes, and rests. A vertical line is drawn through the score, separating it into two sections. The handwriting is in dark ink on aged paper.

A handwritten musical score consisting of 12 staves. The notation is in brown ink on aged paper. The score is organized into measures by vertical bar lines. The notation includes various note values (quarter, eighth, sixteenth notes), rests, and complex rhythmic patterns. Some staves feature dense clusters of notes, possibly representing chords or rapid passages. The handwriting is fluid and characteristic of 18th or 19th-century manuscript notation. A small signature or initials are visible at the bottom center of the page.

Wirtz

This image shows a page of handwritten musical notation on aged, yellowed paper. The score is organized into several systems of staves. The top system consists of five staves, with the first staff containing a complex melodic line with many sixteenth notes and slurs. The second and third staves of this system contain rhythmic accompaniment with notes and rests. The fourth and fifth staves of the top system appear to be empty or contain very faint notation. Below this, there is a system of five staves, where the first staff has a melodic line and the word "ano" is written below it. The second and third staves of this system contain rhythmic accompaniment. The bottom system consists of five staves, with the first staff having a melodic line and the word "toto" written below it. The second and third staves of this system contain rhythmic accompaniment. The notation is in a historical style, with various note values, rests, and slurs. The paper shows signs of age, including some staining and discoloration.

Quasi

A handwritten musical score on aged paper, featuring approximately 15 staves. The notation includes various musical symbols such as clefs (treble and bass), notes, rests, and dynamic markings. The score is organized into systems, with some staves containing dense, complex passages and others showing more rhythmic or melodic lines. There are some corrections and scribbles, particularly in the lower half of the page.

Flauto 1^{mo}

Flauto 2^{do}

Violoncello con Basso

vidi.

Handwritten musical score for strings and woodwinds. The score consists of several staves:

- Flute (Fl):** Top staff, featuring a melodic line with various ornaments and dynamics.
- Clarinet (Cl):** Second staff, with a melodic line and some trills.
- Bassoon (Fg):** Third staff, primarily consisting of chords and sustained notes.
- Violin (Vn):** Fourth staff, showing a melodic line with some slurs.
- Viola (Vla):** Fifth staff, primarily consisting of chords and sustained notes.

Dynamic markings include *p* (piano), *pp* (pianissimo), and *ppp* (pianissimissimo). There are also some performance instructions like *ppp* and *ppp* written vertically.

son violino 1mo

A musical staff containing a series of dotted notes, likely representing a rhythmic pattern or a specific melodic fragment.

A musical staff with a series of horizontal lines, possibly representing a rest or a specific rhythmic pattern.

A musical staff with a series of notes and rests, possibly representing a specific melodic fragment or a rhythmic pattern.

Handwritten musical notation on a single staff, featuring various note values and rests. Above the staff, the word "Tutti" is written in a decorative script.

Handwritten musical notation on a single staff, featuring various note values and rests. Above the staff, the word "arco." is written.

Handwritten musical notation on a single staff, featuring various note values and rests. Above the staff, the words "lou vid mo" are written.

Handwritten musical notation on a single staff, featuring various note values and rests.

Handwritten musical notation on a single staff, featuring various note values and rests.

Handwritten musical notation on a single staff, featuring various note values and rests. Above the staff, the word "arco" is written.

Handwritten musical notation on a single staff, featuring various note values and rests.

Handwritten musical notation on a single staff, featuring various note values and rests.

Handwritten musical notation on a single staff, featuring various note values and rests.

Handwritten musical notation on a single staff, featuring various note values and rests.

Handwritten musical notation on a single staff, featuring various note values and rests.

Handwritten musical notation on a single staff, featuring various note values and rests.

Handwritten musical notation on a single staff, featuring a treble clef, a key signature of one flat, and a complex melodic line with many beamed notes.

Tutti

Handwritten musical notation on a single staff, continuing the melodic line from the first staff with various rhythmic values and accidentals.

Handwritten musical notation on a single staff, primarily consisting of whole and half notes with stems pointing downwards.

Handwritten musical notation on a single staff, featuring a series of chords and some melodic fragments.

Handwritten musical notation on a single staff, showing a rhythmic pattern of eighth and sixteenth notes.

Handwritten musical notation on a single staff, consisting of a series of rests.

Handwritten musical notation on a single staff, featuring a melodic line with some rests and dynamic markings.

Handwritten musical notation on a single staff, starting with a double bar line and a repeat sign, followed by a melodic line. A *Solo* marking is present above the staff.

Handwritten musical notation on a single staff, continuing the melodic line with various rhythmic values.

Handwritten musical notation on a single staff, featuring a series of chords and some melodic fragments.

Handwritten musical notation on a single staff, showing a rhythmic pattern of eighth and sixteenth notes.

Handwritten musical notation on a single staff, consisting of a series of rests.

Handwritten musical notation on a single staff, featuring a melodic line with some rests and dynamic markings.

bis

The first system of the handwritten musical score consists of six staves. The top staff is a vocal line with a melodic line and some initial scribbles. The second staff is a piano accompaniment with a similar melodic line. The third staff contains the word "bis" written vertically in each of the six measures. The fourth staff shows a piano accompaniment with rhythmic patterns and some chordal structures. The fifth and sixth staves continue the piano accompaniment with various musical notations.

The second system of the handwritten musical score consists of six staves. The top staff is a vocal line with a melodic line and some initial scribbles. The second staff is a piano accompaniment with a similar melodic line. The third staff contains the word "bis" written vertically in each of the six measures. The fourth staff shows a piano accompaniment with rhythmic patterns and some chordal structures. The fifth and sixth staves continue the piano accompaniment with various musical notations. On the left side of the system, there is a handwritten instruction: "1ste gang" and "2de gang" with arrows pointing to specific parts of the piano accompaniment.


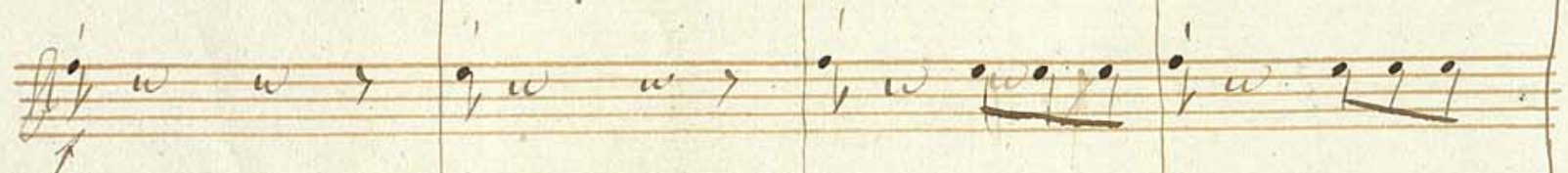
Solo

A handwritten musical score for a solo piece, consisting of ten staves of music. The notation includes various note values (quarter, eighth, and sixteenth notes), rests, and dynamic markings such as *p* (piano) and *f* (forte). The score is written in a single system across ten staves. The first five staves appear to be for a string instrument, possibly a violin or viola, given the clefs and the nature of the notes. The last five staves appear to be for a keyboard instrument, possibly a harpsichord or spinet, given the clefs and the presence of chords and arpeggios. The music is written in a single system across ten staves. The first five staves appear to be for a string instrument, possibly a violin or viola, given the clefs and the nature of the notes. The last five staves appear to be for a keyboard instrument, possibly a harpsichord or spinet, given the clefs and the presence of chords and arpeggios. The notation includes various note values (quarter, eighth, and sixteenth notes), rests, and dynamic markings such as *p* (piano) and *f* (forte). The score is written in a single system across ten staves.

The first system of the handwritten musical score consists of six staves. The top staff features a melodic line with various note values and rests. The second staff contains a more complex melodic line with many beamed notes. The third and fourth staves appear to be accompaniment parts, possibly for a keyboard instrument, with chords and moving lines. The fifth staff shows a rhythmic pattern with notes and rests. The sixth staff contains a melodic line with notes and rests. The system is divided into measures by vertical bar lines.

The second system of the handwritten musical score also consists of six staves. The top staff begins with a double bar line and a repeat sign, followed by a melodic line. The second staff contains a complex melodic line with many beamed notes. The third and fourth staves are accompaniment parts. The fifth staff shows a rhythmic pattern with notes and rests. The sixth staff contains a melodic line with notes and rests. The system is divided into measures by vertical bar lines.

Solo *bis*



rit.

A handwritten musical score on ten staves. The notation includes various note values, rests, and complex rhythmic patterns. The score is organized into measures by vertical bar lines. The top staff features a complex, fast-moving melodic line with many sixteenth notes. The second and third staves have more rhythmic, possibly bass or drum parts, with notes and rests. The fourth staff contains a series of rests. The fifth staff has a melodic line with some rests. The sixth staff is highly complex with many sixteenth notes. The seventh, eighth, and ninth staves contain dense, complex rhythmic patterns, possibly for a keyboard instrument. The tenth staff has a melodic line. The notation is in brown ink on aged paper.

rit.



