

PROFANA 24 (old B.4)

Botti, Abate Antonio

Overtura/per Cimbalo/del Sig^{re} Abate Antonio Botti/
Vendesi da Giovanni Chiari Librario nella Condotta in
Firenze./G.P. so. [Passepartout]
MSS 30.5x23.5 cm 5 pp

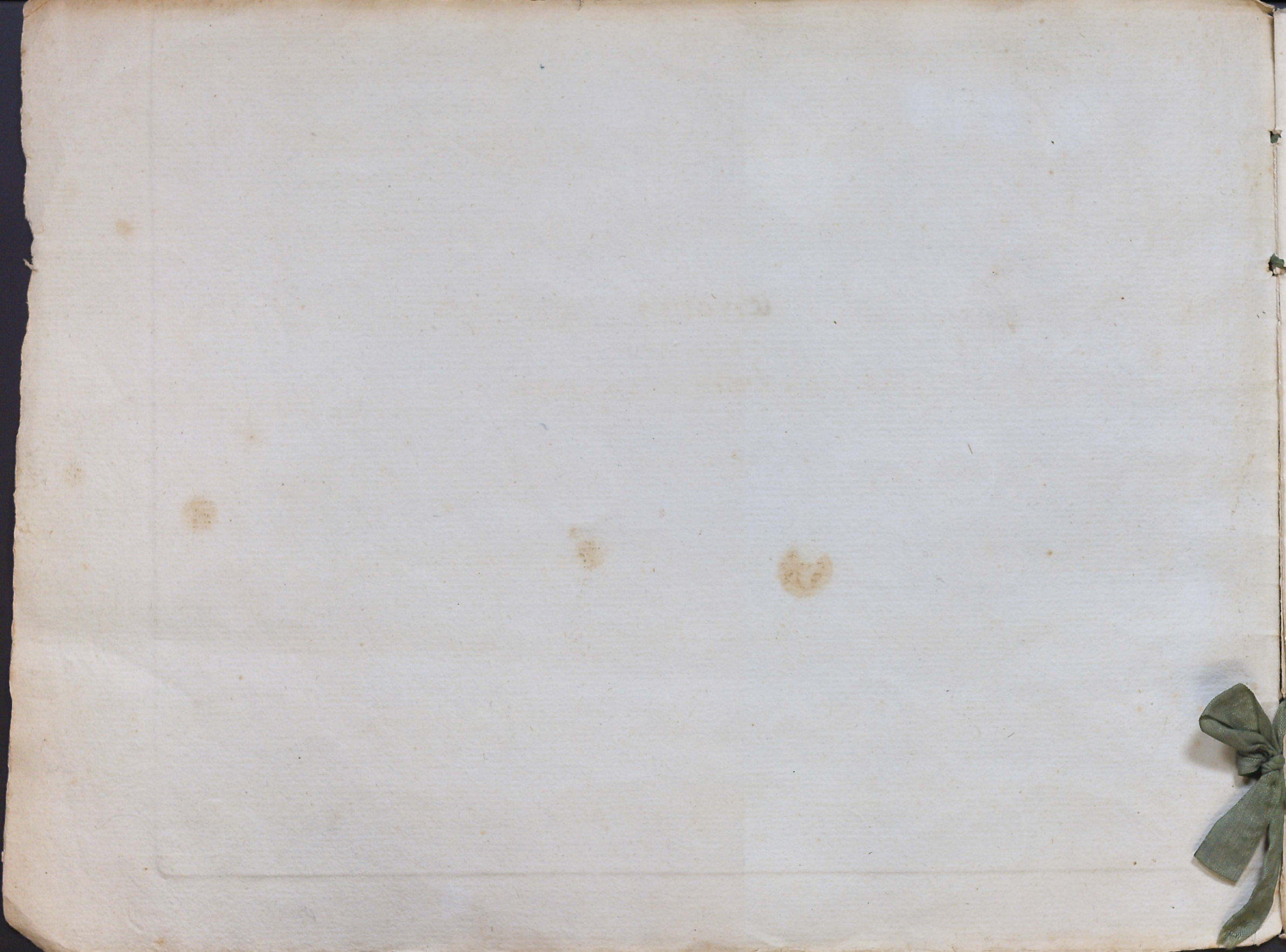


Covertura
per Cimbalò
del Sig. Abate Antonio Botti



24.

Vendesi da Giovanni Chiari Libraio nella Condotta in Firenze. G. P. Sc.
24.



Overtura //

per

Cimbalo del

Signor Abate Antonio Botti //

Overtura

Allegro

Handwritten musical notation for the first system of an Overture. It consists of two staves. The top staff is in treble clef with a key signature of two sharps (F# and C#) and a 2/4 time signature. The bottom staff is in bass clef with the same key signature and time signature. The music begins with a rest followed by a series of eighth and sixteenth notes. Dynamic markings include 'p.' and 'f.'.

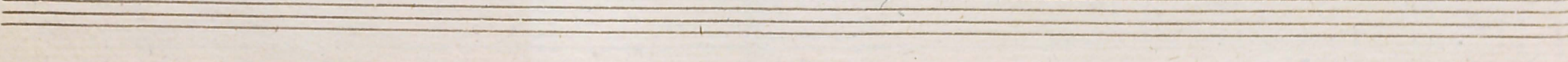
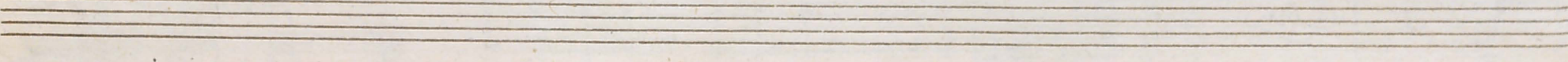
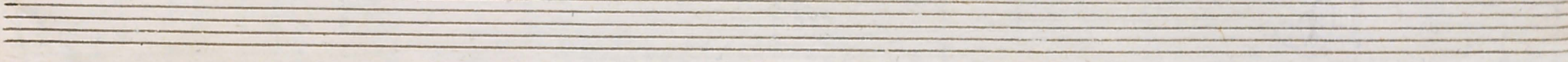
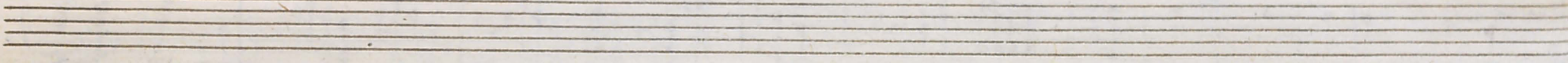
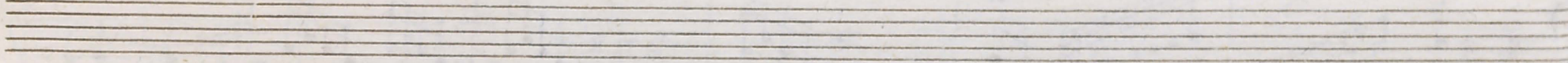
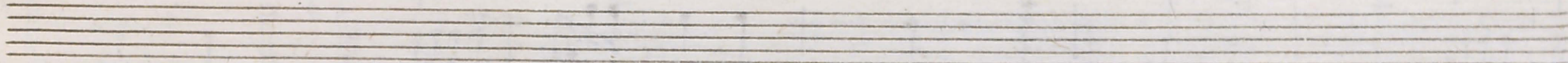
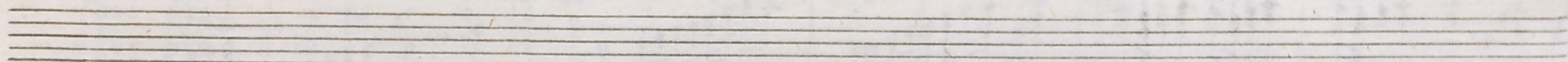
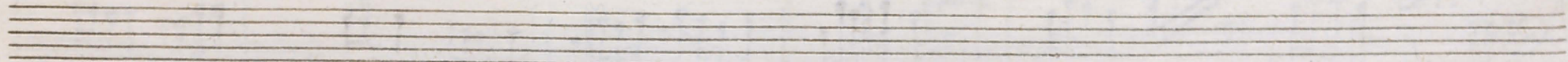
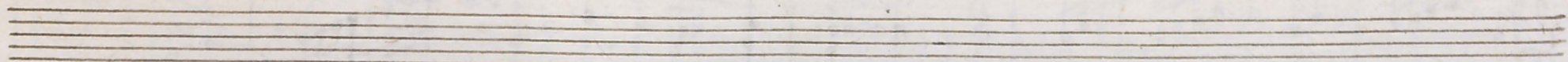
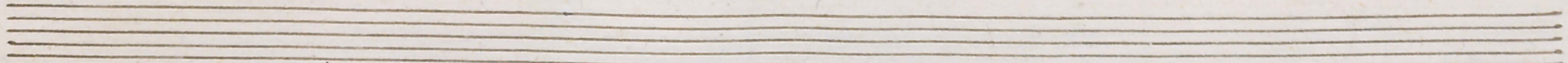
Handwritten musical notation for the second system of the Overture. It consists of four staves. The top two staves are in treble clef, and the bottom two are in bass clef. The music continues with various rhythmic patterns, including eighth and sixteenth notes, and rests. Dynamic markings include 'f.', 'p.', and 'p.'.

This page contains a handwritten musical score for a multi-staff instrument, likely a harpsichord or spinet. The score is organized into four systems, each consisting of two staves. The notation is dense and includes various rhythmic values, including sixteenth and thirty-second notes, as well as rests. Dynamic markings such as *for.* (forte) and *ten* (tenu) are present throughout the piece. The paper shows signs of age, with some staining and wear at the edges.

colti

This image shows a page of handwritten musical notation on aged, yellowed paper. The page is numbered '4' in the top left corner. The notation is arranged in several systems, each consisting of two staves. The top system features a treble clef on the upper staff and a bass clef on the lower staff. The music is written in a style characteristic of the 18th or 19th century, with dense chordal textures and frequent use of slurs and ornaments. The notation includes various note values, rests, and dynamic markings such as 'f.' (forte) and 'b' (basso). The paper shows signs of age, including foxing and some staining, particularly along the left edge.

A handwritten musical score for piano, consisting of six systems of staves. The first system has two staves. The second system has two staves with dynamic markings *pia.*, *for.*, and *p.*. The third system has two staves with a *tr* marking. The fourth system has two staves with a *for.* marking. The fifth system has two staves. The sixth system has two staves with a double bar line and a fermata. The notation includes various note values, rests, and complex chordal structures.



24M

L. 70.000

