

Requiem à 15

H.I.F. Biber

Introitus

Tromba 2

Musical notation for Tromba 2, measures 1-7. The piece begins with a forte (*f*) dynamic. Measures 2 and 5 contain accents. Measure 4 is a whole rest. Measure 7 ends with a forte (*f*) dynamic.

Musical notation for Tromba 2, measures 8-12. Measure 10 features an accent (*t*). Measure 12 ends with a fermata.

Musical notation for Tromba 2, measures 13-29. Measure 13 has a measure rest of 12. Measure 20 features an accent (*t*). Measure 29 ends with a fermata.

Musical notation for Tromba 2, measures 30-35. Measures 31 and 34 feature accents (*t*). Measure 35 ends with a fermata.

Musical notation for Tromba 2, measures 36-41. The instruction "Te decet" is written above the staff. Measures 37, 38, 39, and 40 contain measure rests of 24, 16, 2, and 2 measures respectively.

Requiem ut supra

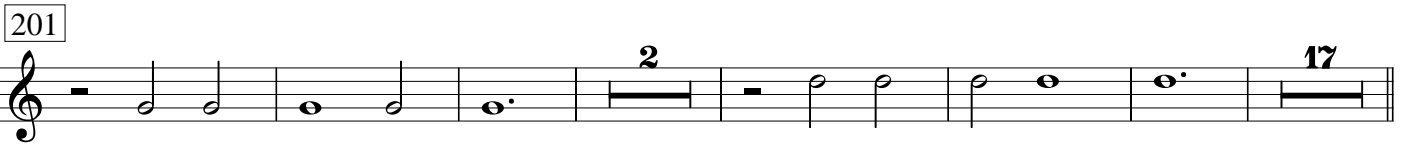
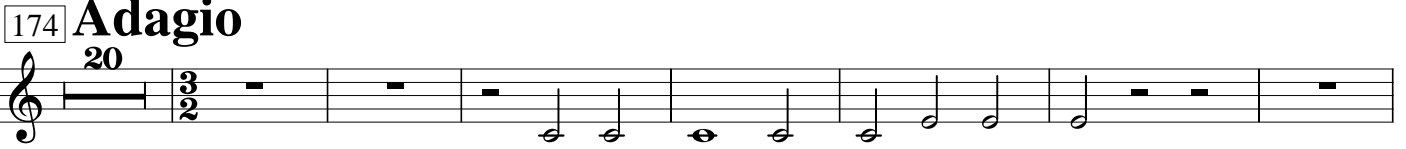
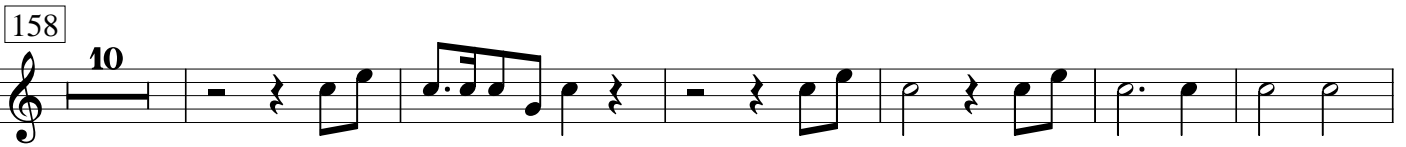
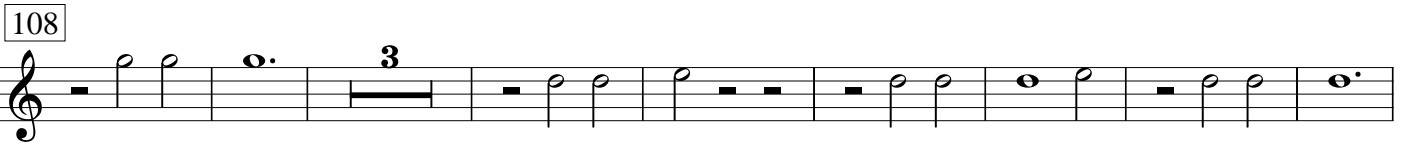
Kyrie

Musical notation for Tromba 2, measures 1-18. Measure 1 has a measure rest of 15. Measure 18 ends with a fermata.

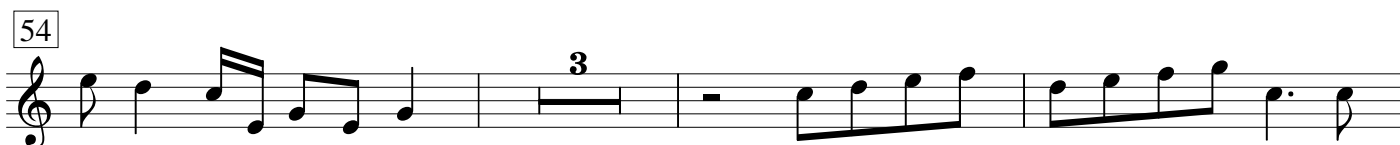
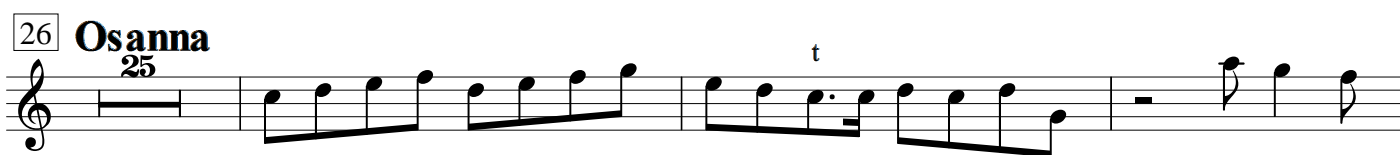
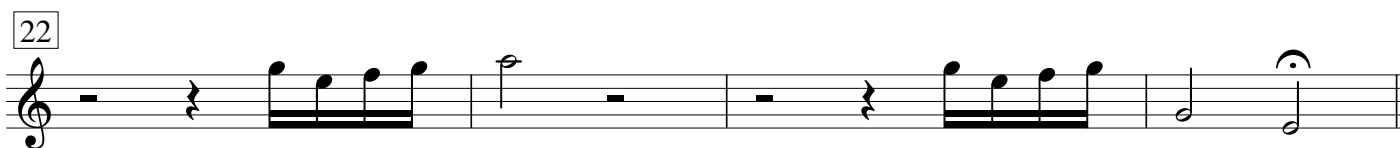
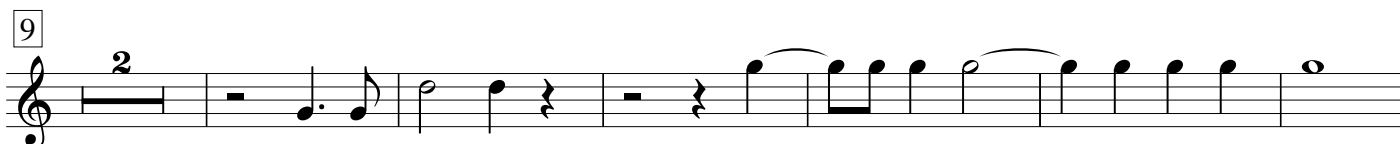
Musical notation for Tromba 2, measures 19-25. Measure 19 features an accent (*t*). Measure 22 has a measure rest of 3. Measure 25 ends with a fermata.

Musical notation for Tromba 2, measures 26-31. Measure 27 has a measure rest of 19. Measure 29 features an accent (*t*). Measure 31 features a trill [*t*] and ends with a fermata.

Sequenz



Sanctus



Benedictus tacet

Osanna ut supra

Agnus tacet

Communio

