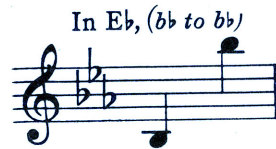


SERENADE



FROM THE MUSICAL ROMANCE
"THE STUDENT PRINCE"

WORDS BY
DOROTHY DONNELLY

MUSIC BY
SIGMUND ROMBERG

PUBLISHED FOR THE FOLLOWING ARRANGEMENTS

Song in Eb	.50	4 Part Mixed (SATB) arr. Lawrence	.20
Piano Solo (Gotham Classics No. 26)	.50	4 Part Male (TTBB)	.20
2 Part Female (SA)	.15	Band—"B" Set of Parts	2.50
3 Part Female (SSA) arr. Scotson	.15	"C" Set of Parts	1.50
3 Part Female (SSA) arr. Lawrence	.15	Piano Selection (Student Prince)	1.00
4 Part Mixed (SATB) arr. Scotson	.16	Vocal Score (Student Prince)	5.00

WHEN PERFORMING THIS COMPOSITION KINDLY GIVE ALL
PROGRAM CREDITS TO

H A R M S
I N C O R P O R A T E D
B Y A R R A N G E M E N T W I T H
M. WITMARK & SONS
NEW YORK

PRINTED IN U. S. A.

Serenade

Words by
DOROTHY DONNELLY

(Solo Version)

Music by
SIGMUND ROMBERG

Andante, molto tranquillo

VOICE *pp*

Ov - er head the moon is beam - ing,

Piano *pp* *dolcissimo*

ped. * *ped.* * *con pedale*

White as blos - soms on the bough — Noth - ing is heard but the

song of a bird, — Fill - ing all the air with dream - ing

pp.

Could my heart but still its beat - ing, On - ly you can tell it

sempre pp

Copyright MCMXXV by HARMS Inc., N. Y.

International Copyright Secured

ALL RIGHTS RESERVED Including public performance for profit

how! — Be-lov - ed From your win - dow give me greet - ing,

rit. *p*

rit. *pp*

hear my e - ter - nal vow! Soft in the trees, sighs the

rall. *pp a tempo.*

rall. *pp a tempo.*

ech - o of my long - ing. While all a - round you my dreams of rap - ture thron

mf

mf

(CHORUS)
Vis - ions glow - ing a - round me thron - ing My soul, my joy, — My

pp

ppp *pp*

hope, my fear, Your heart must tell you that I am near.

p *poco - a - poco - cresc.*
 Lean from a - bove, while I pour out my love, For you know to my life you are

mf
 love — Oh, hear — my long-ing cry! Oh,

dim. (CHORUS)
 love — me, or I die! *pp* Love me!

pp *ten.* *ten.*
ppp *ppp*

mp

Ov - er head the moon is beam - ing, White as blos - soms on the bough!

p dolcissimo

Noth - ing is heard but the song of a bird, — Fill - ing all the air with dream - ing!

mf

Could my heart but still it's beat - ing, On - ly you can tell it how! — Be - lov - ed!

rit.

mf

rit.

mf a tempo.

From your win - dow give me greet - ing I Swear my e - ter - nal love.

a tempo.

mf

f

pp

WARNING: Any person who shall willfully and for profit copy the words or music of this song, or any portion thereof, shall be liable to criminal prosecution under the United States Copyright Law.