

Sechs Deutsche

für Clavier und Violine (Woo42)
Violine

L. van Beethoven

N°1.

Two staves of musical notation for the first movement. The first staff contains the main melody in 3/4 time, starting with a treble clef and a key signature of one flat. The second staff provides a rhythmic accompaniment consisting of eighth-note chords.

N°2.

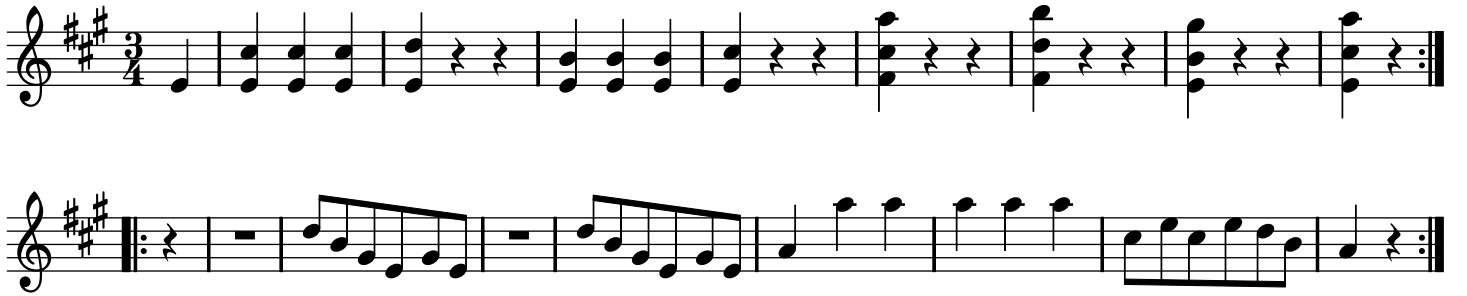
Three staves of musical notation for the second movement. The first staff shows a melody in 3/4 time with a key signature of two sharps. The second and third staves provide accompaniment with eighth-note patterns and chords.

N°3.

Three staves of musical notation for the third movement. The first staff features a melody in 3/4 time with a key signature of one flat. The second and third staves provide accompaniment. The word "Trio" is written above the third staff.



N°4.



N°5.



N°6.

