

II

Mod^{to}

QUINTETTO

Musical score for Viola 2^{da}, Quintetto, page 6. The score consists of 14 staves of music. It begins with a treble clef, a common time signature (C), and a key signature of one sharp (F#). The tempo is marked "Mod to". The score includes various dynamics such as *p*, *mf*, *f*, and *fp*, along with crescendos and first endings. The music features a mix of eighth and sixteenth notes, often beamed together, and rests. The piece concludes with a double bar line and a repeat sign.

VIOLA 2^{da}

The musical score for Viola 2da on page 7 consists of 15 staves of music. The dynamics and performance markings are as follows:

- Staff 1: *f*, *pp*
- Staff 2: *f*, *tr*
- Staff 3: *fp*
- Staff 4: *f*
- Staff 5: *cres*, *f*, *p*, *f*, *p*, *f*
- Staff 6: *f*, *p*, *f*, *p*, *f*
- Staff 7: *p*, *p*
- Staff 8: *f*, *f*
- Staff 9: *p*, *f*, *cres*
- Staff 10: *f*, *f*, *p*, *f*
- Staff 11: *cres*, *cres*, *p*, *cres*
- Staff 12: *f*, *tr*, *tr*
- Staff 13: *tr*, *p*, *pp*

Menuetto Allegretto

VIOLA 2^{da}

p *f* *p* *cres* *p* *p* *cres*

p *f* *sf* *p*

p *cres* *p* *ff*

p *cres* *f*

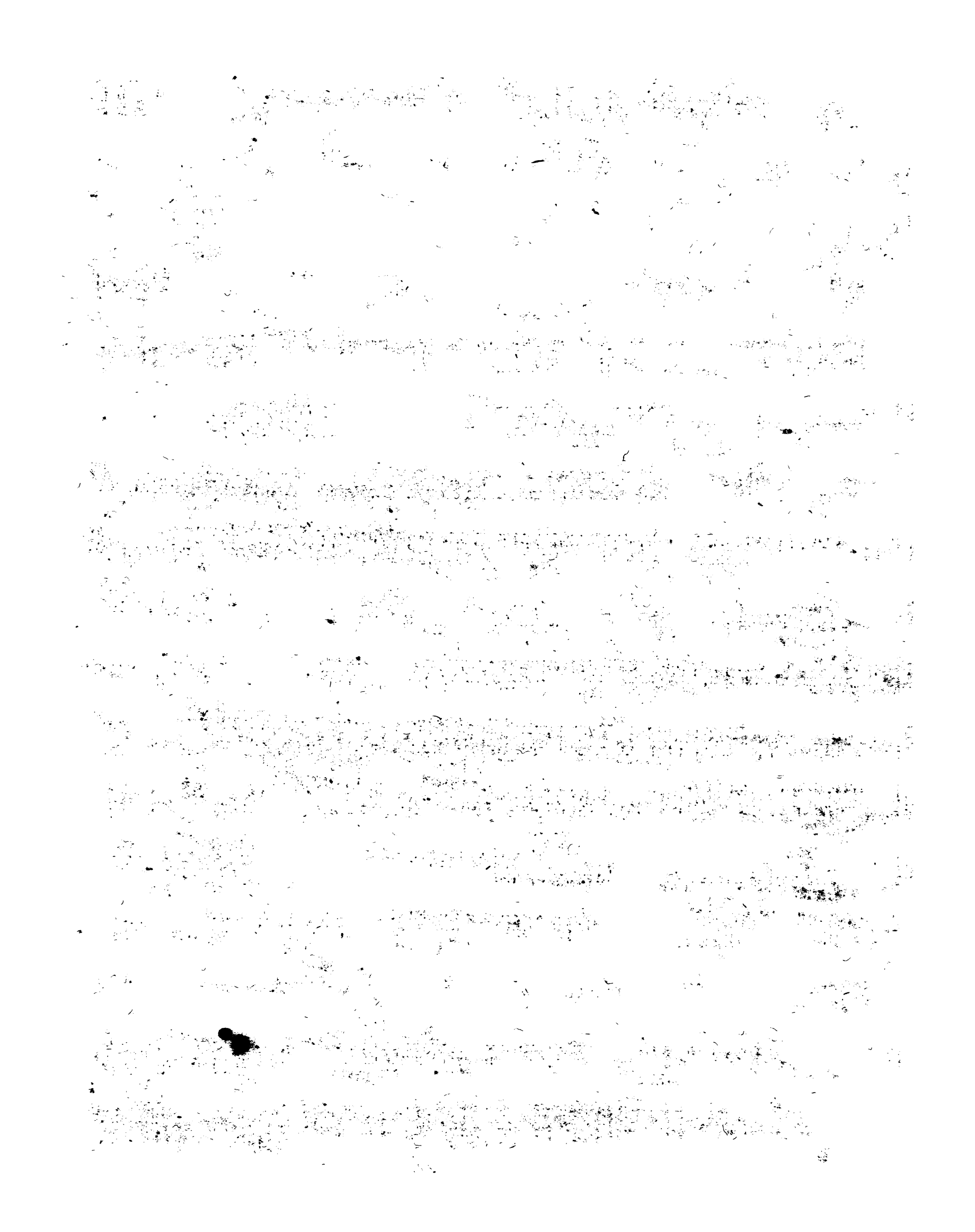
p *cres* *f* *M.D.C.*

f *p* *fp* *fp*

p *sf* *fp*

fp *p* *f*

f *pp*



Allegro

The musical score for Viola 2da on page 10 consists of 14 staves of music. The tempo is marked 'Allegro'. The score begins with a piano (*p*) dynamic and a 2/4 time signature. The first staff contains a series of eighth-note patterns. The second staff features a forte (*f*) dynamic and includes fingerings 8, 4, and 1. The third staff starts with a '2' above the first measure. The fourth staff continues with eighth-note patterns. The fifth staff includes a '5' above the first measure and dynamics *p*, *p*, *cres*, and *f*. The sixth staff features dynamics *f*, *p*, *f*, *p*, and *f*. The seventh staff has a *p* dynamic. The eighth staff includes fingerings 1, 1, and 3. The ninth staff continues with eighth-note patterns. The tenth staff features a *f* dynamic and fingerings 8 and 4. The eleventh staff has a *f* dynamic and fingerings 1, 1, 1, and 1. The twelfth staff includes dynamics *p* and *p*. The thirteenth staff features dynamics *f* and *f*. The fourteenth staff concludes with a *f* dynamic.

VIOLA 2^{da}

II

5
p
cres
f
p
f
f
p
f
p
1
3
p
1
f
p
1
1