

31<sup>a</sup>/1/2

# Neuf basses dances deux branles

vingt et cinq Bauennes avec quinze Gaillardes en musique a quatre parties le tout nouvellemēt imprime a Paris par Pierre Attaignāt libraire demourāt en la rue de la Harpe au bout de la rue des Mathurins pres leglise saint Cosme.

1530

¶ Le Roy a done priuilege de troyz ans aus Attaignāt apres l'expressiō de chacū liure q'il imprera. Et deffēt a to<sup>9</sup> libraires/imprimeurs & aultres q'ls nayēt a imprimer & estre faire lesd liures p' lesd Attaignāt imprimes ne aucune partie d'iceulx sur peine de cōfiscatiō & d'amēde arbitraire.

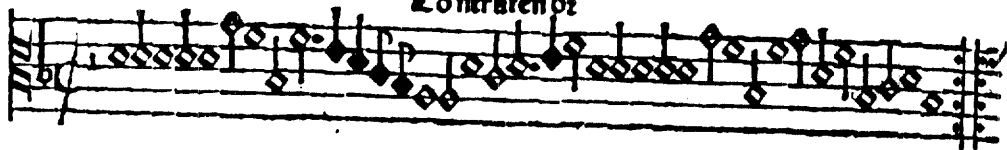
## Contratenor.

¶ r r

16.

Contratenor

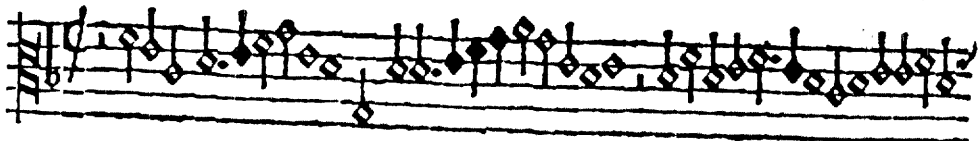
1



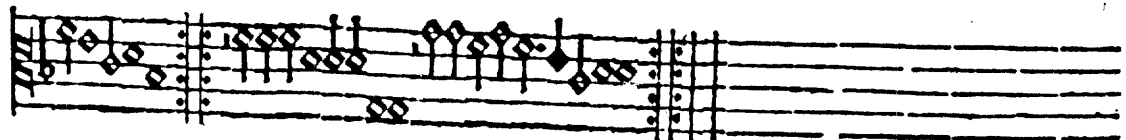
Basse dance



2



Basse dance



3 *Contratenor* **ff**

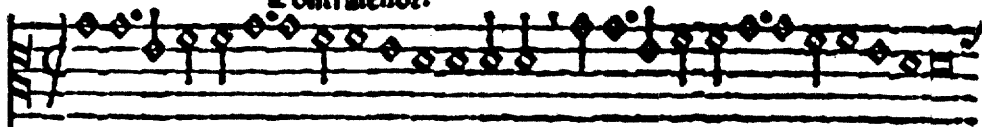
**Basse dance**

4

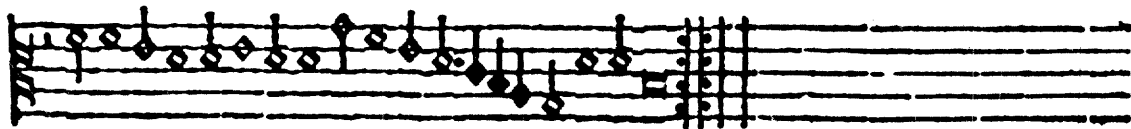
**La gata en italien**

**Basse dance**

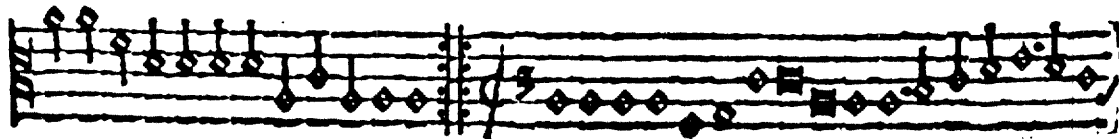
Contratenor.



La scarpe my faict mal. Basse dance

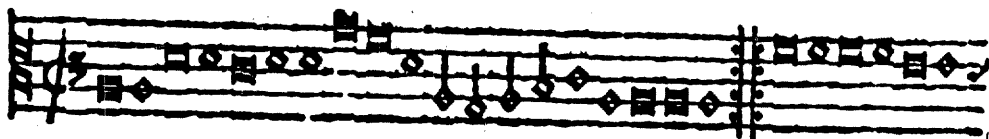
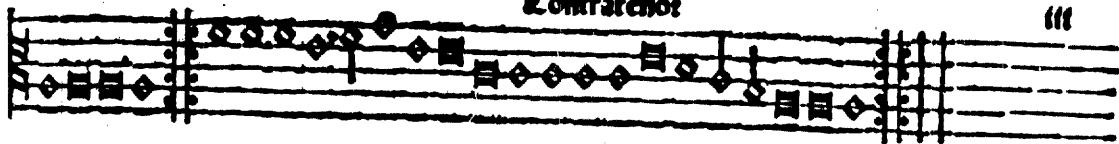


La magdalena Basse dance

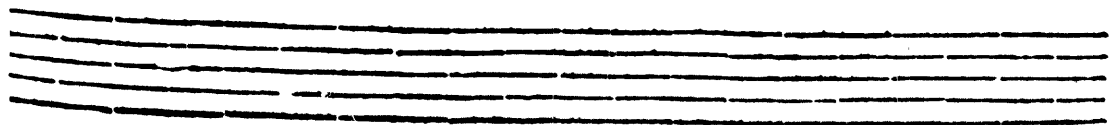
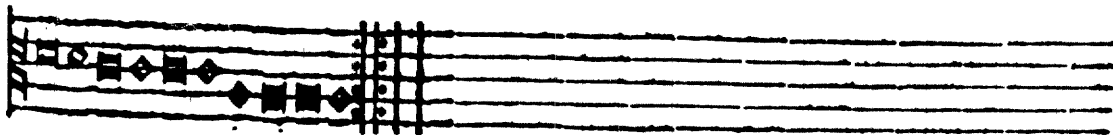


Contrateno:

111

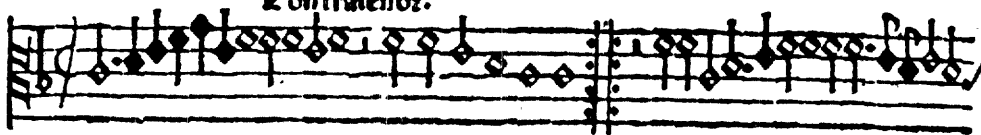


Tourdon

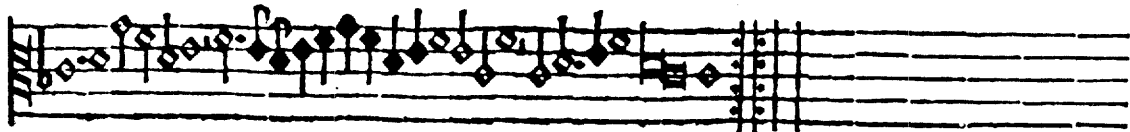


Contratenor.

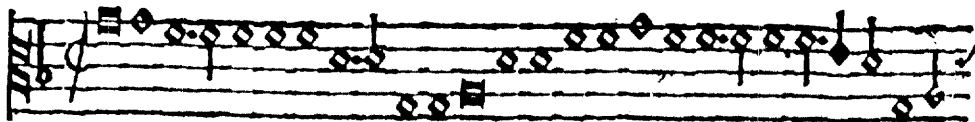
3



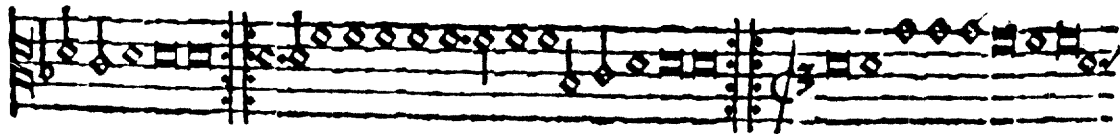
Basse dance



6



La brosse Basse dance

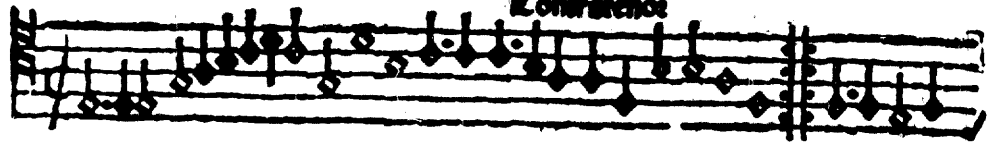


Contratenor

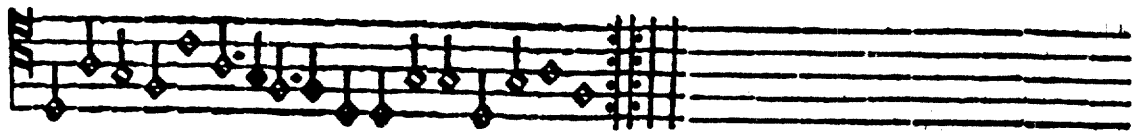
Contratenor

17.

1



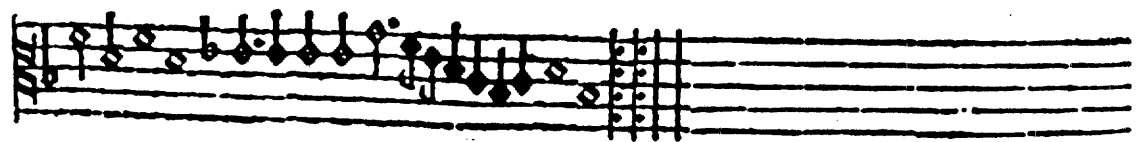
Branle



2



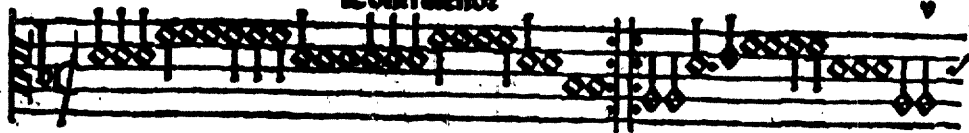
Branle





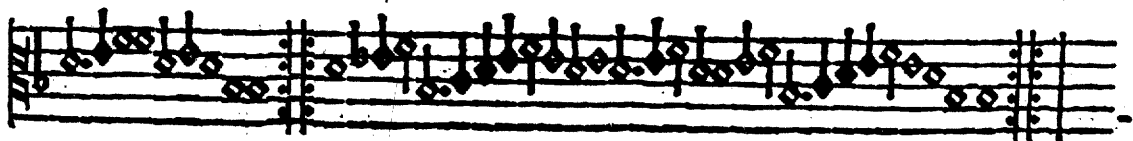
Contratenor

1

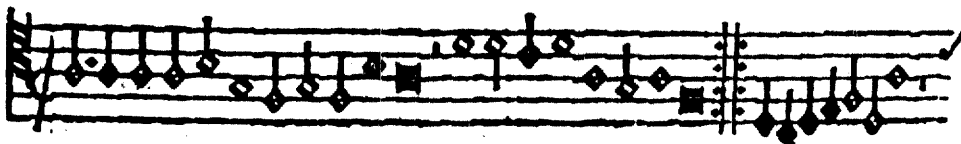


18

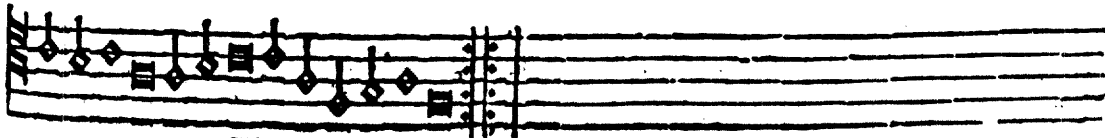
Baume



2

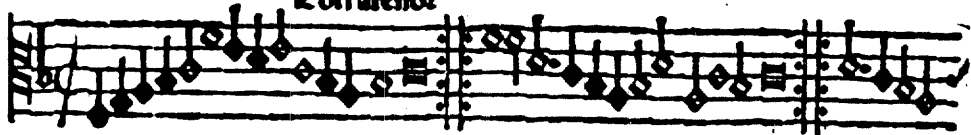


Baume



L'erratenoz

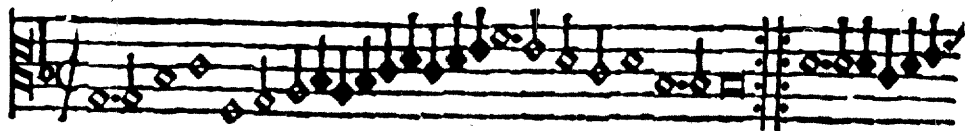
3



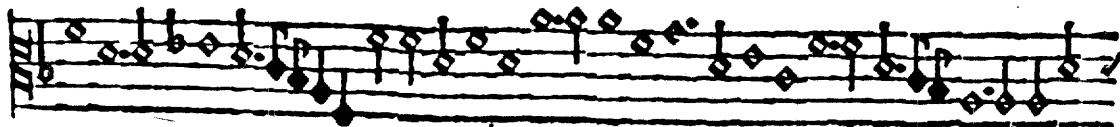
Daucne



4

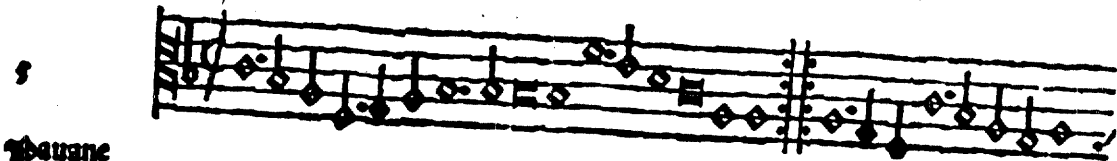
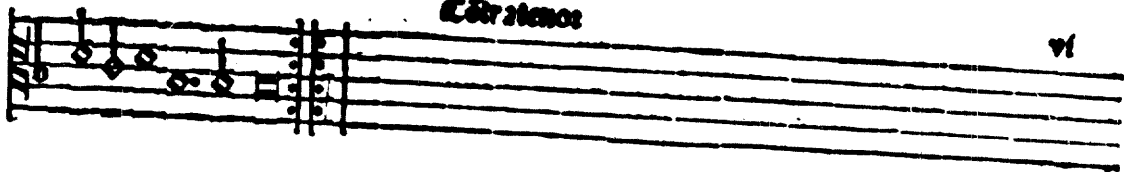


Daucne

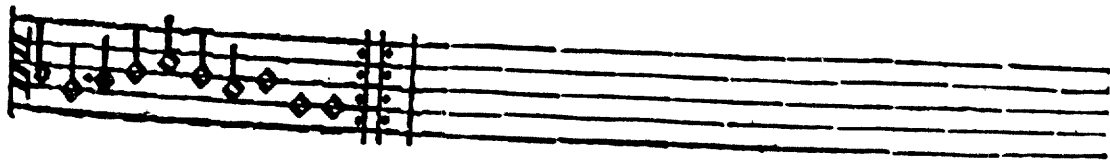


**Cárstenos**

vi

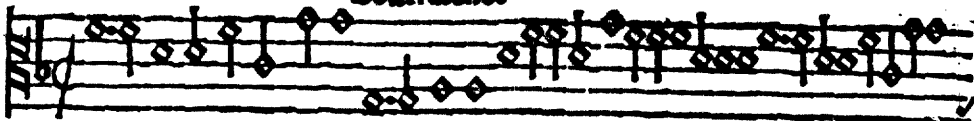


**baucane**



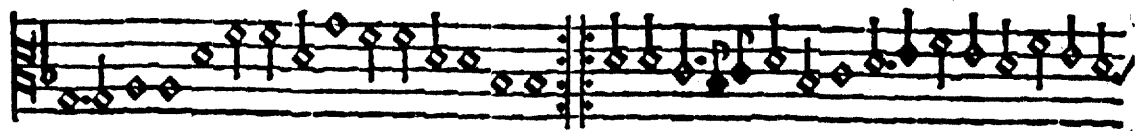
6

Contratenor

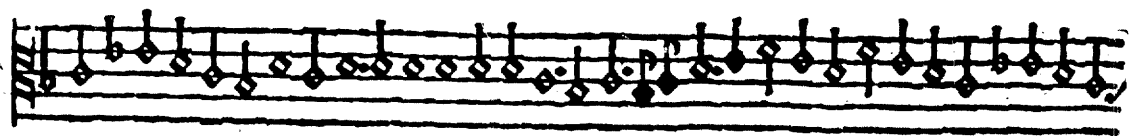


A single musical staff for the Contratenor part. It begins with a treble clef and a common time signature. The notation consists of a series of diamond-shaped notes with stems, some beamed together. The staff ends with a double bar line and a repeat sign.

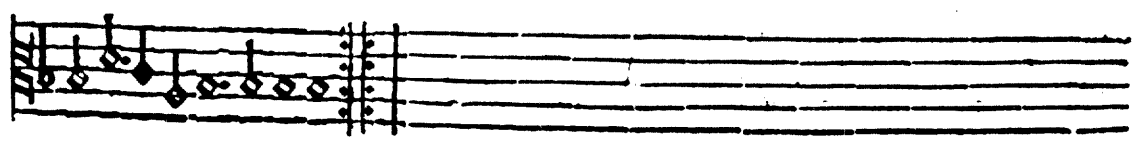
Baume



The first musical staff for the Baume part. It starts with a treble clef and a common time signature. The notation features diamond-shaped notes with stems, some beamed together. A double bar line with repeat dots is present in the middle of the staff.



The second musical staff for the Baume part, continuing the notation with diamond-shaped notes and stems.

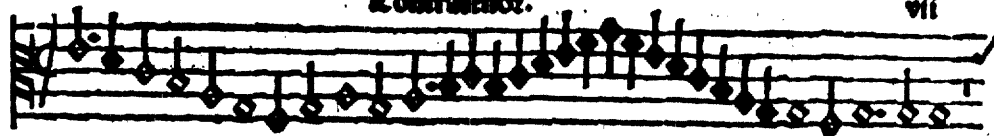


The third musical staff for the Baume part, showing the final notes and a double bar line with repeat dots.

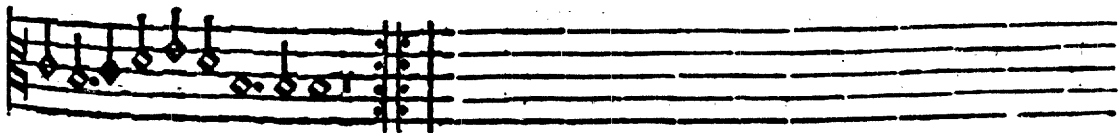
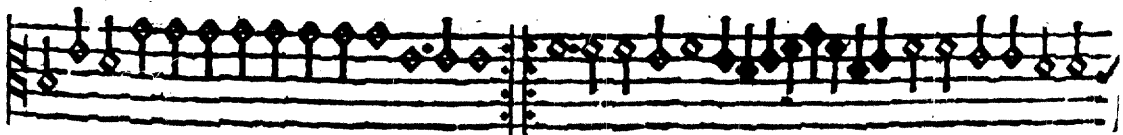
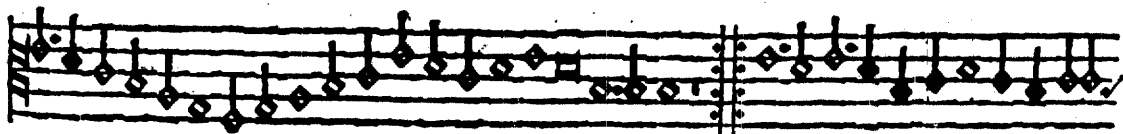
Contratenor.

vii

7




Baſſe



3

Contratenor



Soprano

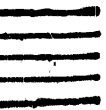
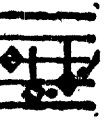
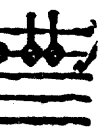


4

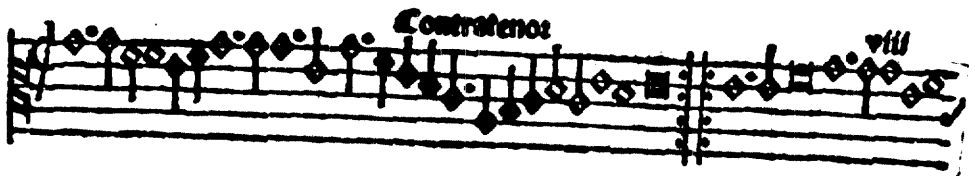


Alto



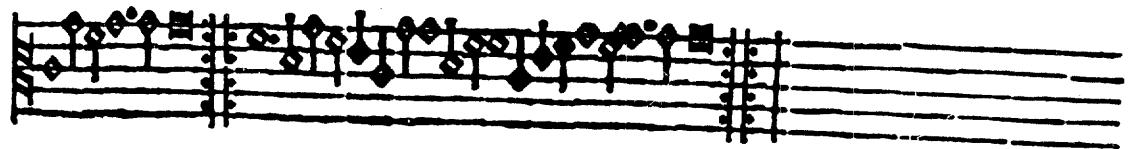


10



19

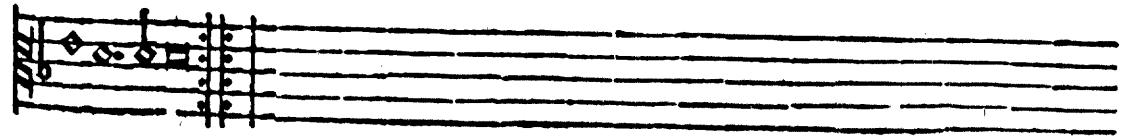
**Pauene**



11



**Pauene**



12

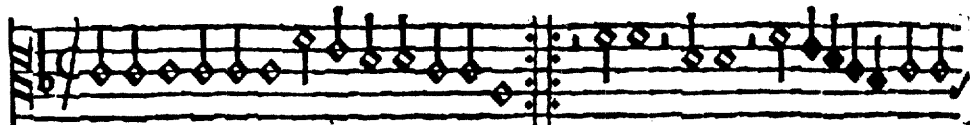
Contratenor



Musical notation for the Contratenor part, measures 12-13. The staff is a single five-line staff with a treble clef. The music consists of a sequence of notes with stems pointing downwards, interspersed with rests. The notes are primarily eighth and sixteenth notes. There are some square-shaped notes, possibly indicating a specific instrument or a specific type of note.

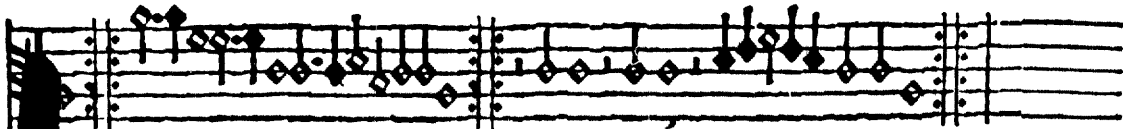
Vouenne

13

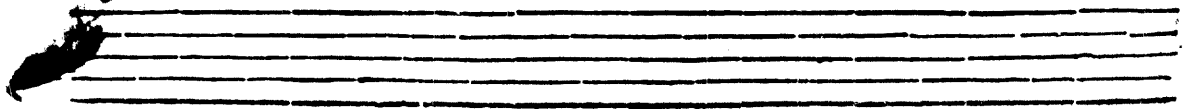


Musical notation for the Vouenne part, measures 12-13. The staff is a single five-line staff with a treble clef. The music consists of a sequence of notes with stems pointing downwards, interspersed with rests. The notes are primarily eighth and sixteenth notes. There are some square-shaped notes, possibly indicating a specific instrument or a specific type of note.

Vouane.



Musical notation for the Vouane part, measures 12-13. The staff is a single five-line staff with a treble clef. The music consists of a sequence of notes with stems pointing downwards, interspersed with rests. The notes are primarily eighth and sixteenth notes. There are some square-shaped notes, possibly indicating a specific instrument or a specific type of note.



Two empty musical staves, one above the other, consisting of five lines each. They are completely blank.



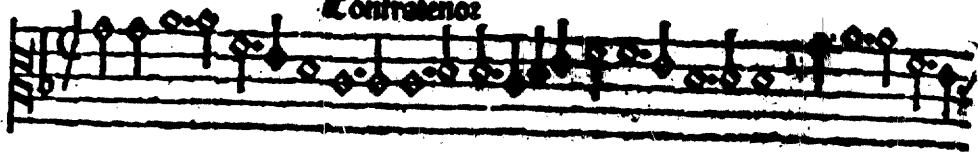




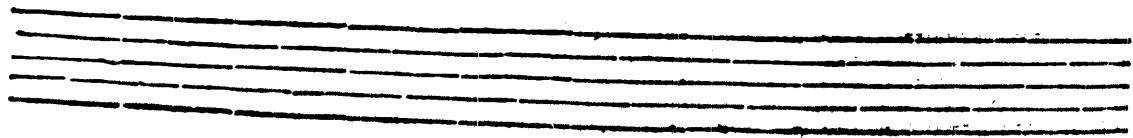
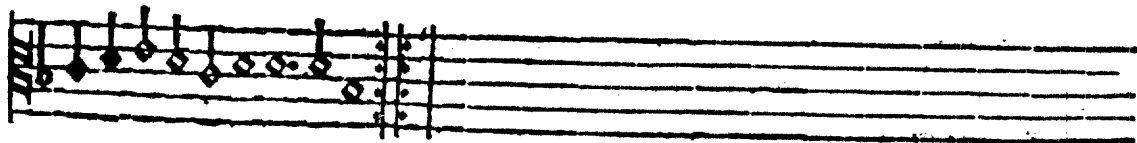
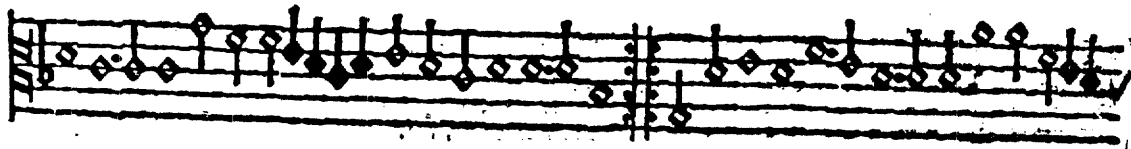


9

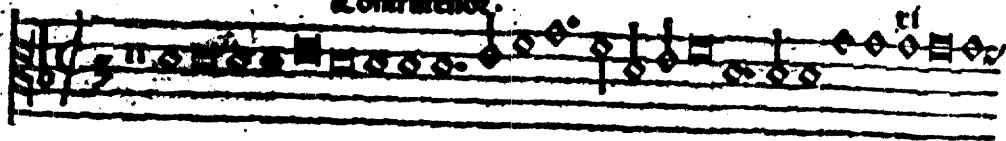
Contratense



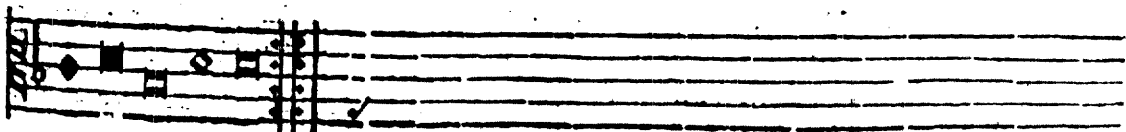
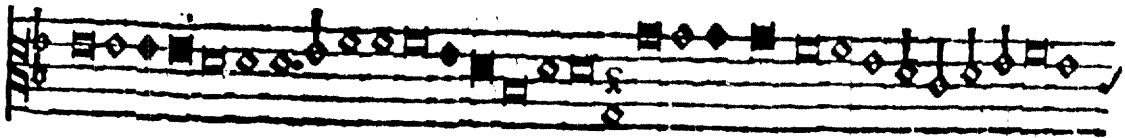
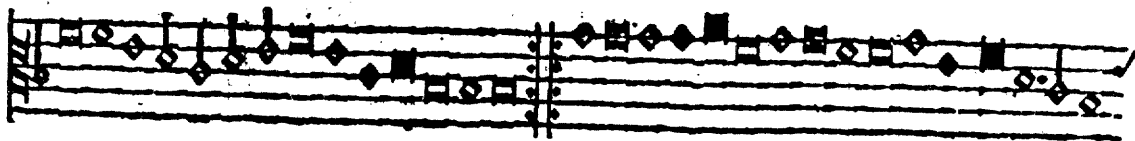
Vauenne



Contratenor.

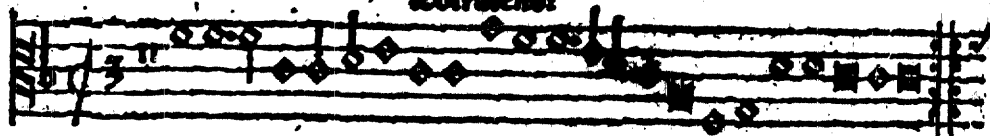


Sallarde

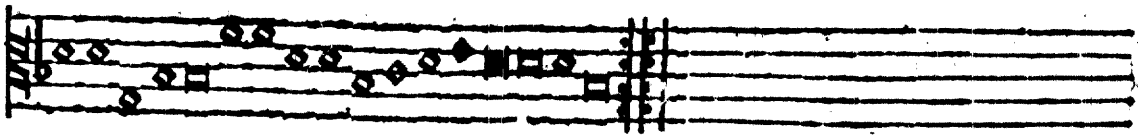
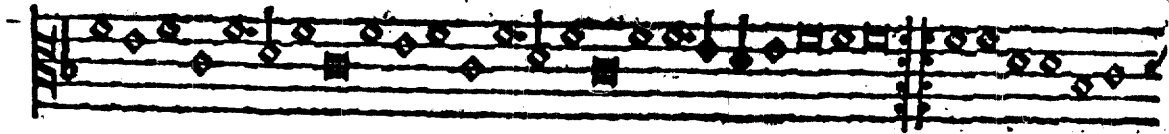


e

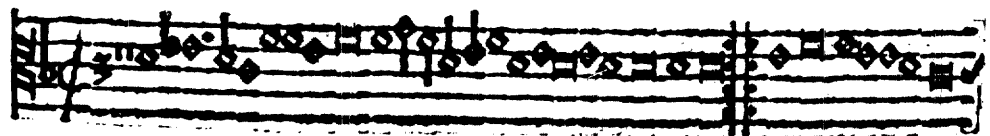
Contratenor



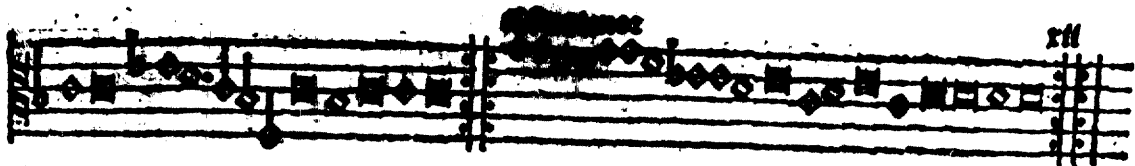
Saillarde



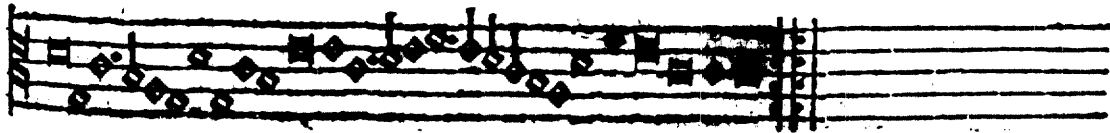
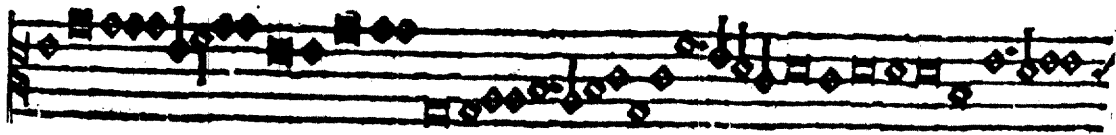
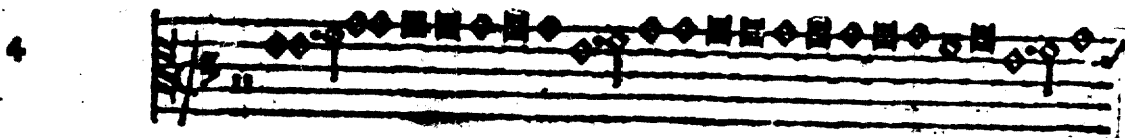
3



Saillarde

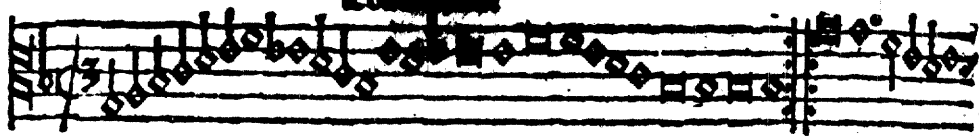


Saillarde



Conte

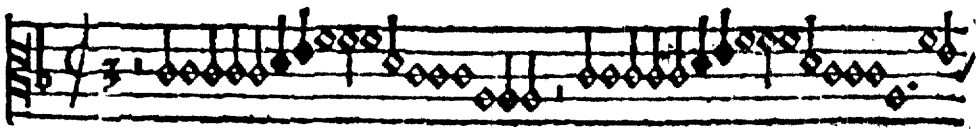
5



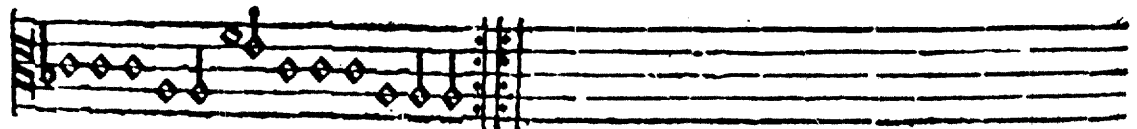
Saillarde



6



Saillarde





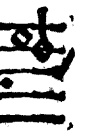


7

**Contratenor**

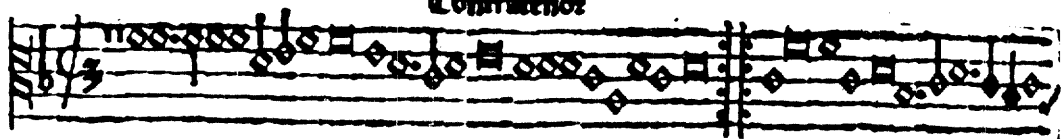
rvl XIII

**Sallarde**



**Sallarde**

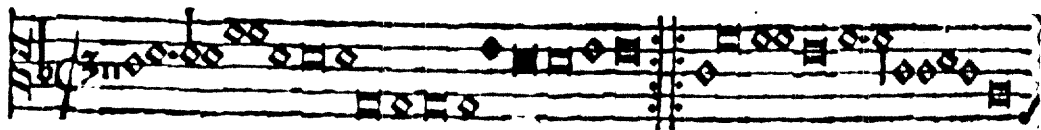
Contratenor



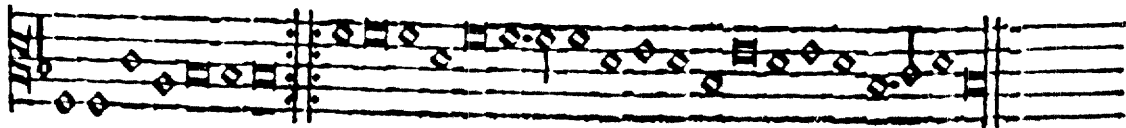
Baillarde



10



Baillarde



12

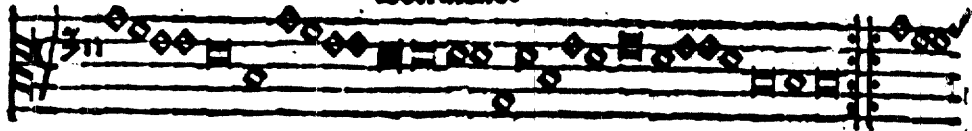
*Strateno:*

*trill*

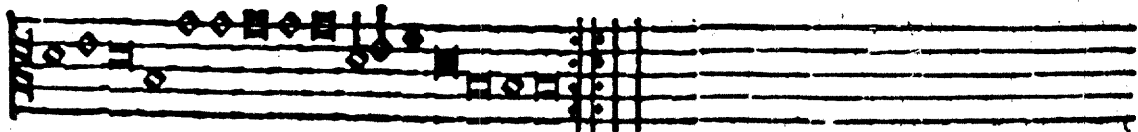
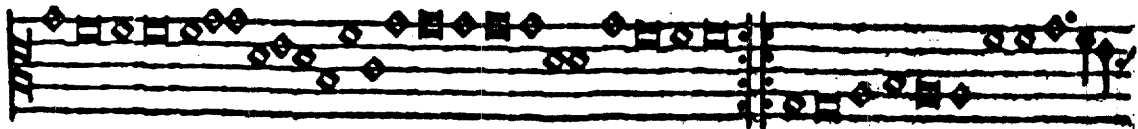
Saillarde

Léstratenos

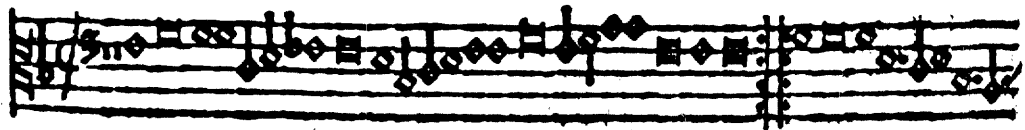
12



Saillarde



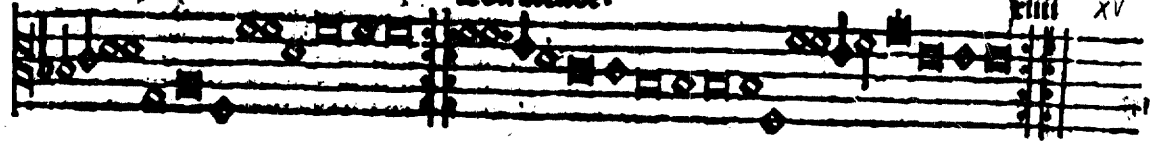
13



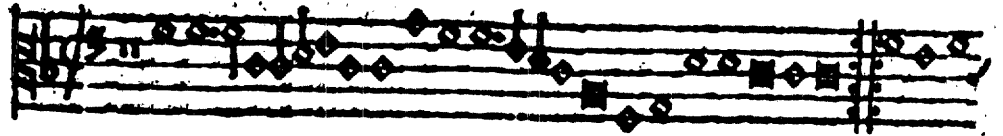
Saillarde

Grave.

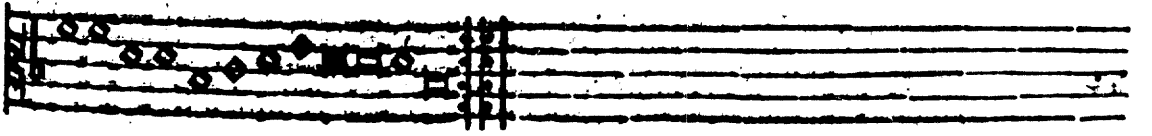
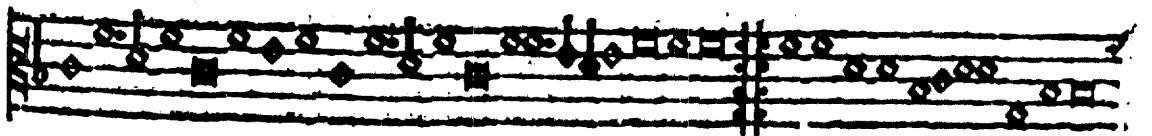
XV



14

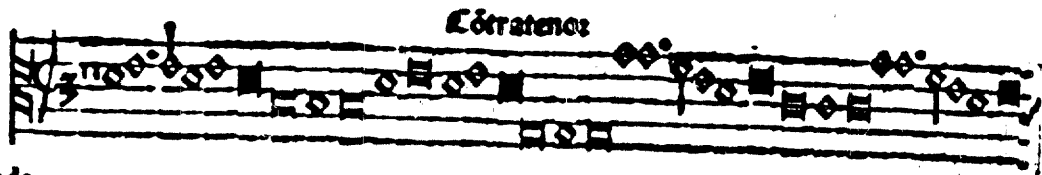


Sallarde

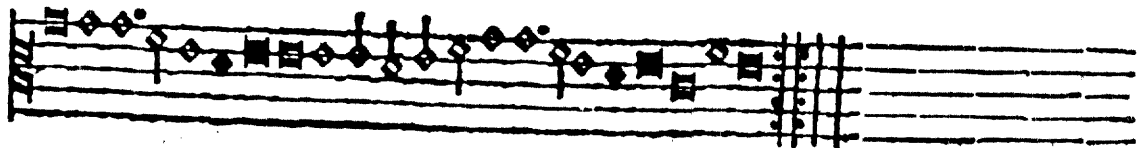
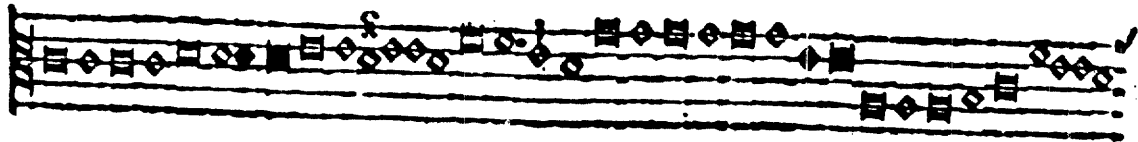


XVI

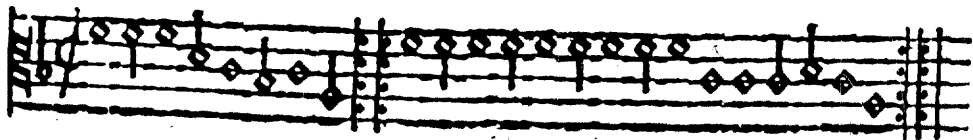
15



Baillarde



20



Baillarde

21

Contratenor

21

Organo

22

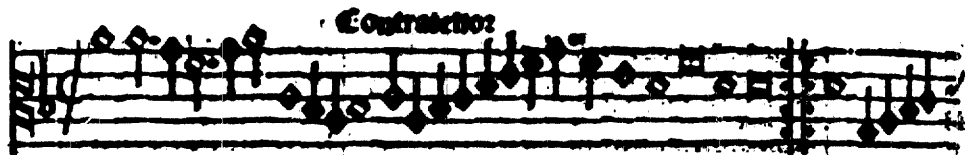
22

Organo

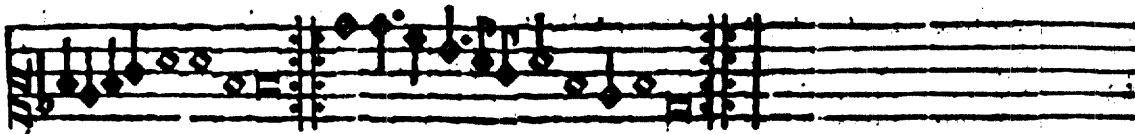
23

Organo

24.



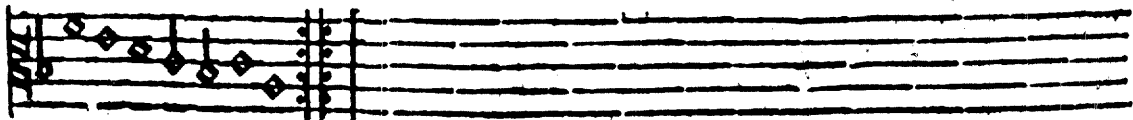
Hautbois



25



Hautbois La rote de rode



Finis.