

Graun, Johann Gottlieb (1702/03-1771) BRD DS Mus.ms 363/11

Sinfonia/a/2 Corn:/2 Violin/Viola/e/Basso/[Incipit] del Sign
/Amadeo Graun/ (D-dur)



Allegro C D-dur - An-
dante C A-dur - Allegro
3/8 D-dur.

Ms.ca.1745-50 (Graupner). 36 x 23 cm.

WZ: DS 2.

6 St.: vl 1,2, vla, cembalo, cor 1,2.
1,1,1,2,1,1 Bl.

Alte Sign.: 3076/11.

Mennicke Nr.33. - Themat.Kat.Breitkopf I 1762.

3076

3076

1. Doppelst.

5. St. Mus. ms. 363 Nr. 11

3076/11

fol. (7)

Sinfonia

a

2 Corn:

2 Violin

Viola

e

Bassu



del Lyso.

Amadeo Graun

Großherzoglich
Hessische
Hofbibliothek

Sinfonia

Embalo.

Allegro.

p

t

p

p

p

t

t

t

t

t

t

Piano

Andante

p

poc. f

poc. p

mel. f

p

poc. f

Handwritten musical score on ten staves. The notation includes various rhythmic values, dynamic markings like 'p' and 'f', and performance instructions such as 'Allegro' and 'Folbig'. The paper shows signs of age and wear.

Sinfonia

Violino 1.

2

Allegro

Andante

piano
Andante.

The image shows a page of handwritten musical notation for piano. It consists of 14 staves of music. The first section is marked 'Andante' and 'piano'. The notation includes various dynamics such as *p*, *mf*, *ff*, and *pp*, along with trills and slurs. The second section is marked 'Allegro' and 'fortissimo'. The notation continues with similar dynamics and includes a section marked 'fortissimo' with a 3/8 time signature. The piece concludes with a final flourish.

Andante.

Allegro.

fortissimo.

Sinfonia.

Violino 2.

3

Allegro.

Andante

piano.

Andante

Allegro

Sinfonia

Viola

Allegro.

Andante

piano.

Andante

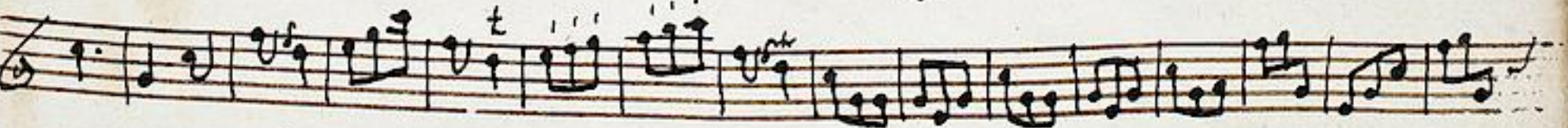
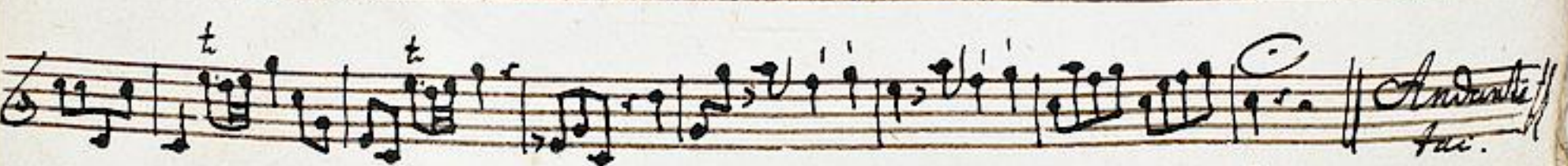
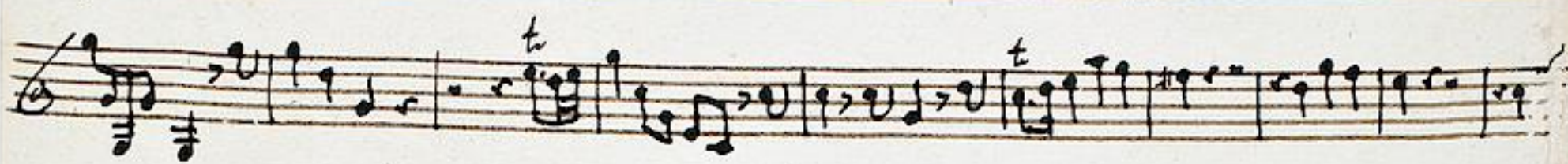
forbis:

Allegro.

Sinfonia

Opus 1.

5



Sinfonia.

Coro 2.

6

