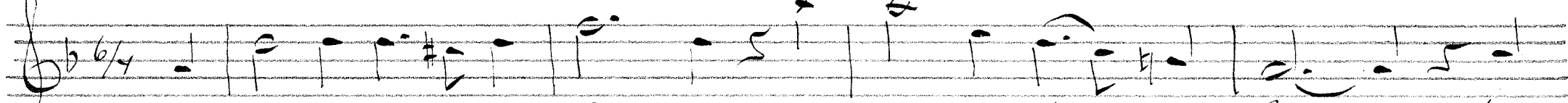


# Kongen i Leire.

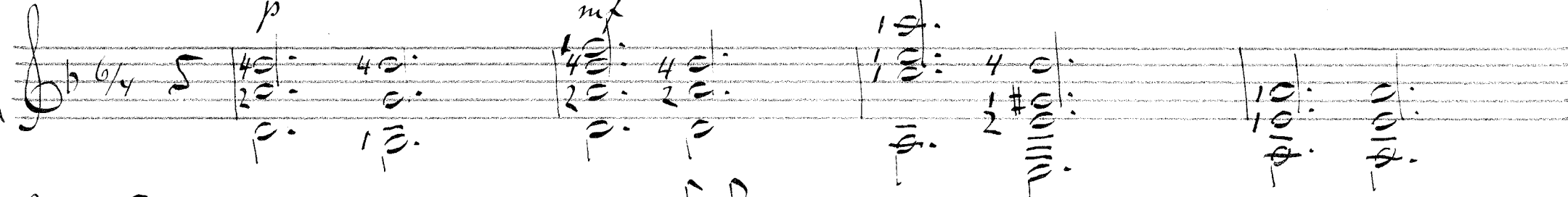
*Andante con moto.*

Canto

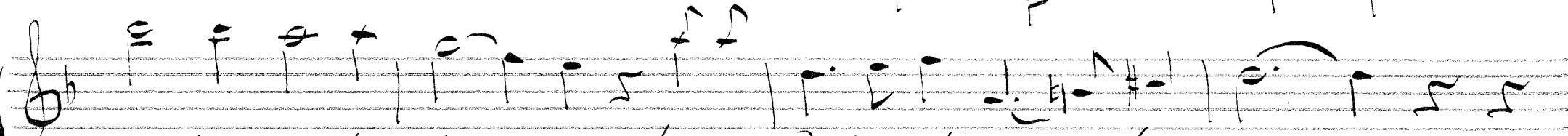


Der var en Kongen i Leire, heet tro-fast til sin Grav; hans

Chitarra



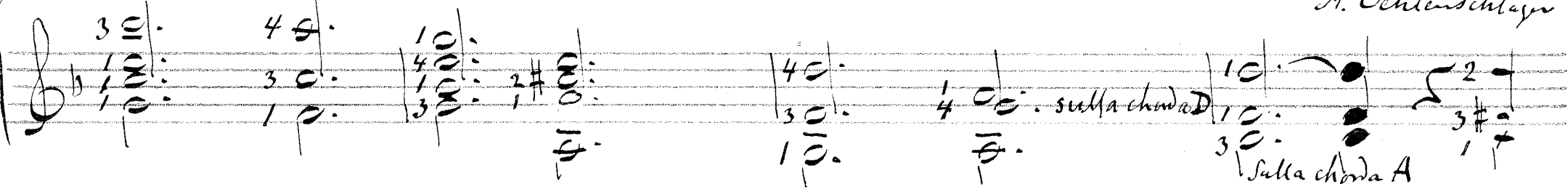
Canto



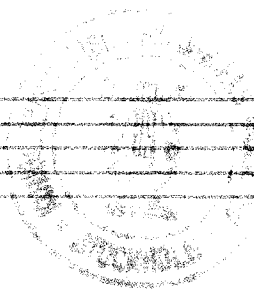
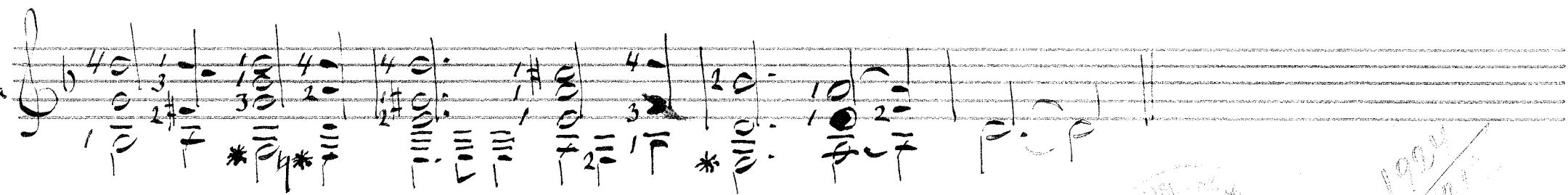
Tæste - mø hin fei - re ham i Djøden et Guld - horn gav.

*A. Oehlenschläger efter Goethe.*

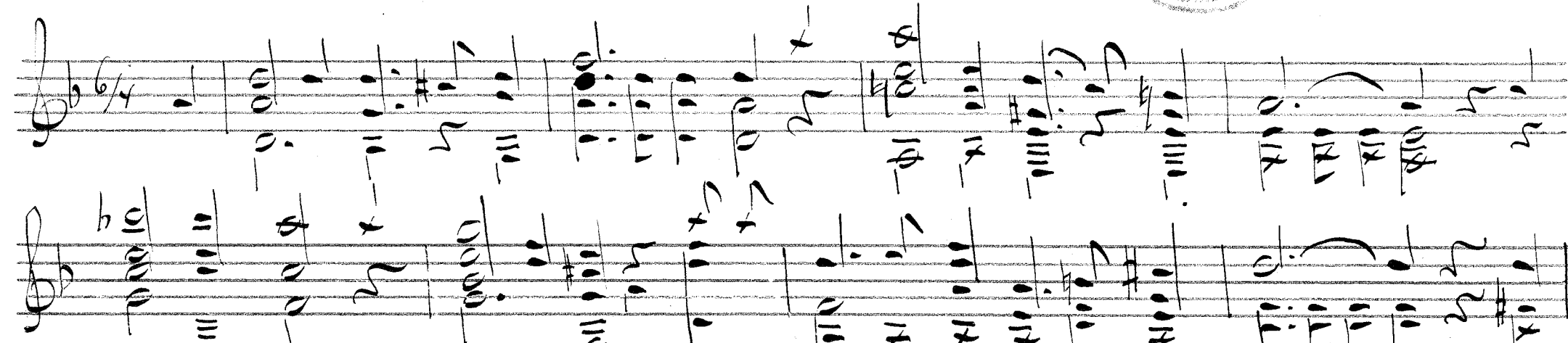
Chitarra



Chitarra



1924  
13/11



*ecc.*

Handwritten musical notation on a five-line staff. The notes are mostly eighth and sixteenth notes, with some rests. The handwriting is somewhat messy and appears to be a sketch or a first draft.

Handwritten musical notation on a five-line staff. This section continues the piece with similar note values and some dynamic markings. The ink is dark, and the lines are clearly visible.

Handwritten musical notation on a five-line staff. The notation includes various note values and rests, with some annotations written below the staff.

Handwritten musical notation on a five-line staff. The piece continues with a mix of rhythmic patterns and note values.

Handwritten musical notation on a five-line staff. The notation is dense, with many notes and rests, suggesting a more complex or busy section of the music.

Handwritten musical notation on a five-line staff. The piece concludes with a few final notes and rests. The overall style is that of a handwritten musical score.