

# Gustav Mahler Symphony No. 9 in D Major

## 1. VIOLINE.

### I.

Andante comodo.

2. Viol. *espress*

8 3 4 5 6 7 8

*morendo - - ppp*

*pp*

*Griffbrett.*

*pp*

*f* *dim.* *p cresc.*

*cresc.* *p = f* *p = f* *p cresc. molto*

*f cresc. molto* *f* *ff* *f* *f*

*f* *f* *f* *f* *f*

*Rit.* *a tempo*

*f* *f* *f* *f*

*f* *cresc.* *A-Saite, D-S, G-S,* *pizz.* *f*

1 2 3 4

# Mahler — Symphony No. 9 in D Major

2

## 1. VIOLINE.

2 Viol  
G-Saite.  
*mf* *cresc.* *f*

*p cresc.* *f* *p* *sempre p* *cresc.* *f*

*p* *cresc.* 3

*f* *p* 1

Etwas frischer. *dim.* *ff* *p* *sf* *sf*

Fließend. *tr* *tr* *cresc.* 3 *ff* 3 *p cresc.* *cresc.*

*rit.* *a tempo* *molto cresc.* *fff* *sf* *sf* *sf* *sf*

6

*sf* *Allegro.*

Dämpfer auf 2 *Tempo I. subito. (aber* 10 *Basse. pizz.* 11.

nicht schleppen) *mit Dämpfer* 7 *espress.* *dim.*

12. 13.



# Mahler — Symphony No. 9 in D Major

4

## 1. VIOLINE.

11

Viola. *p* *dim.* *ppp* *ff* *ff sempre*

Leidenschaftlich. G-Saite.

*molto appassionato*

*molto cresc.*

12

G-Saite. *f* *ff* *p* *f* *molto cresc.*

G-Saite. *f* *ff*

*sempre ff*

*Langsamer. (nicht eilen)*

*sehr mäßigend*

*stets mit höchster Kraft*

*schon langsam* D-Saite. G-Saite.

13

*ppp*

# Mahler — Symphony No. 9 in D Major

## 1. VIOLINE.

5

1 6 1 Schattenhaft.

*pp* *ppp* 1

Allmählich an Ton gewinnend.

Tempo I. Andante.

I. Solo. *sehr zart, aber ausdrucksvoll hervortretend*

II. Solo. *sehr zart, aber ausdrucksvoll hervortretend*

Tutti, *sehr zart, und ausdrucksvoll*

*p* *pp* *ff*

nicht schleppen

etwas fließender

etwas drängend

Bewegter (*quasi Allegro.*)

*f* *f* *ff* *f* *f*

14

*f*

*f* *f*

*sempre ff* *f*

# Mahler — Symphony No. 9 in D Major

6

## 1. VIOLINE.

*sf sf* Pesante. *sf*

*sf veloce*

*ff rit.* *höchste Kraft* Pesante. *a tempo*

*string.*

15 *rit.* *Gehalten.* *mit Dämpfer*

2 2 *Celli u. Bässe.*

*p molto espress.* *dim.* *ohne Dämpfer* *ff martellato* *sf*

*p* *sf* *p* *sf* *p* *p*

*pp* *pp*

*Wie von Anfang.* *Griffbrett.* *cresc.* *Anwachsend.*

*G-Saite.*

16 *ff* *ff* *ff* *f*

Mahler — Symphony No. 9 in D Major

1. VIOLINE.

*sf sf sf sf sf sf p*

*ff*

*sf*

*Plötzlich bedeutend langsamer (Lento) und leise.*

*Misterioso. Solo.*

*2 p*

*8 Celi. 9. 10*

*Nicht mehr so langsam.*

*ff*

*G-Saite. 3 3 dim. p cresc.*

*ff sempre ff sf p*

*cresc. molto molto ff*

*Etwas belebter.*

*ff sf sf sf f p*

*G-Saite. G-Saite.*

*dim. Schon ganz langsam. Sehr zögernd.*

*10 7*

*Schwebend. Flöte. 2 3 molto rit. Solo. Wieder a tempo (aber viel langsamer als zu Anfang) schmeichelnd*

*espr. pp*

*Zögernd.*

*1 Harfe 2 3 1 Harfe. 2 3 1*

*dolciss. Alle. Flag. G-Saite. pzz. pp*







# Mahler — Symphony No. 9 in D Major

10

## 1. VIOLINE.

Tempo III. (*Ländler, ganz langsam.*)

G-Saite. *pp* *Rit.* *pp weich* *Molto rit.* *espr.*

A tempo più mosso subito. (*Tempo I.*)

10 *f* 11. 12. 13. *pp sempre*

*Rit.* *pp* *A tempo (langsam wie vorher) fließend.* *p molto espr.*

*f* *dim.* *Rit.* *Molto rit.* *f*

A tempo II. (*aber etwas schneller als das erstmal*)

*f* *f* *sf* *sf* *sf*

*fp* *f* *p*

*pizz.* *arco* *f* *ff* *sf*

22 *sf* *sf*

*sf* *p* *ff* *ff sempre* *Fließend.*

*tr*

*f sempre*

# Mahler — Symphony No. 9 in D Major

## 1. VIOLINE.

Noch etwas lebhafter.

sfp sfp ff

ff f f f

p espr. ppp pp molto espr.

ff

ppp p espr. cresc. f p subito

ff dim. sf p ppp morendo

Tempo I. (wie zu Anfang) 11 12 13 14 23 2. Viol. 4 5

Solo. tr 6

p f sf Alle. 3 2

Allmählich in Tempo II. (Walzer) übergehen.

ff ff

# Mahler — Symphony No. 9 in D Major

12

## 1. VIOLINE.

Tempo II.

1 *ff*

24 *p* *ff* G-Saite. -

2 *ff*

25 *f* *ff*

Detailed description: This block contains the first 25 measures of the first violin part. It begins with a first measure rest, followed by a series of eighth and sixteenth notes, some with slurs and accents. Measure 24 features a change in dynamics to piano (*p*) and a specific instruction to use the G-string (*G-Saite.*). The piece concludes with a first measure rest in measure 25.

Noch etwas frischer.

*ff* *ff* *sf* *sf* *sf*

Allmählich et-

was eilend, doch nie überhitzt.

*sf* *ff*

Detailed description: This block contains measures 26 through 30. The music is characterized by rapid sixteenth-note passages with slurs and accents. The dynamics range from fortissimo (*ff*) to sforzando (*sf*). The tempo instruction 'Allmählich et-' (gradually) is placed above the staff, and 'was eilend, doch nie überhitzt.' (hurried, but never overhasty) is placed below. The piece ends with a first measure rest in measure 30.





Mahler — Symphony No. 9 in D Major

1. VIOLINE.

*f* *sempre ff* **30**

*V*

*sf* *sf* *sf*

*4* *mf*

*8* *ff*

*ff*

*pizz.* **1** *arco* *ff* *p leggiero* *V* *V*

**31** *f* **2** **3**

*p marcato* *pp* *f*

*Solo.* *f* *sf* *pizz.* *p*

*Tutti.* *sf* *pizz.* *p* **2**

Mahler — Symphony No. 9 in D Major

16

1. VIOLINE.

32

Alle.

*ff sf p p cresc. p subito ff p ff*

*pizz. arco*

*arco pizz.*

*V V V V V V V V*

*1 1 1 1 1 1 1 1*

*ff sf p subito*

*pizz. arco*

*f p ff*

*V V V V*

*1*

*Sempre l'istesso tempo. (Nicht eilen.) (wie vorher)*

*pizz.*

*ff*

*arco*

*p*

*V V V V*

*ff sf sf*

*2*

*G-Saite.*

*ff ff*

*40*



# Mahler — Symphony No. 9 in D Major

## 1. VIOLINE.

17

33

1

2

*ff*

34

*p*

*p sempre*

*ff*

*sempre f*

*ff*

*ff*

*sf*

*ff*

*ff*

*dim.*

Listesso tempo. (wie früher)

*pp*

*sff*

*f*

*p subito*

G-Saite.

*f*

*p*

*espress.*

*f*

1

*p*

*pp*

35

*f*

3

*sf*

Detailed description: This page of a musical score for Violin I, measures 33-35, features ten staves of music. The first staff (measure 33) begins with a first ending bracket and a dynamic of *ff*. The second and third staves contain complex chordal textures with trills. The fourth staff (measure 34) starts with a *p* dynamic and includes markings for *p sempre*, *ff*, and *sempre f*. The fifth and sixth staves continue with *ff* dynamics. The seventh staff has *sf* and *ff* markings. The eighth staff concludes with *ff* and *dim.* markings. The tempo instruction 'Listesso tempo. (wie früher)' is placed above the ninth staff, which begins with *pp* and includes *sff*, *f*, and *p subito* dynamics. The tenth staff (measure 35) features a 'G-Saite.' instruction and dynamics of *f*, *p*, *espress.*, and *f*. The final staff (measure 35) includes a first ending bracket, *p* and *pp* dynamics, and ends with a *f* dynamic and a final triplet of notes.

# Mahler — Symphony No. 9 in D Major

18

## 1. VIOLINE.

5 *f* *ff*

*Sempre l'istesso tempo.*

7 *ff* Vic. u. Baße. 9

36 5 *2.VI. sempre ff* 6. 7. 8. *dim. pp*

1 2 3 4 5 6 7 8 *Etwas gehalten.* *pp subito*

*pppp*

*pp*

1 14 *pp*

2 37 *pp molto espress.*

# Mahler — Symphony No. 9 in D Major

## 1. VIOLINE.

Mit großer Empfindung.

Violin part, measures 1-38. The music begins with a *cresc.* marking and a *f* dynamic. It features a melodic line with various articulations, including accents and slurs. A box containing the number 38 is placed above the staff. The dynamic changes to *p ma molto espress.* and then to *ff* with a *dim.* marking.

Violin part, measures 39-40. The music continues with a *sf* dynamic, followed by a *ff* dynamic. A box containing the number 39 is placed above the staff.

Piano accompaniment, measures 1-40. The left hand plays a steady accompaniment with a *ppp* dynamic. The right hand features a melodic line with a *pp* dynamic. A box containing the number 14 is placed above the right hand staff. A box containing the number 39 is placed above the right hand staff, with the instruction "am Steg" written above it.

Piano accompaniment, measures 41-50. The music is marked "Immer am Steg." and "Nicht eilen." with a *Vlc.* marking. The left hand plays a steady accompaniment with a *ppp* dynamic. The right hand features a melodic line with a *p* dynamic, marked "p deutlich". The dynamics change to *pp* and then *ppp*. A box containing the number 39 is placed above the right hand staff, with the instruction "am Steg" written above it.

Viola part, measures 6-8. The music is marked "Viola. mit Sord." and "natürlich". The dynamic is *ppp*. A box containing the number 6 is placed above the staff. A box containing the number 8 is placed above the staff, with the instruction "pizz." written above it.

1st Flute part, measures 9-10. The music is marked "1 Fl." and "natürlich". The dynamic is *pp*. A box containing the number 9 is placed above the staff. A box containing the number 10 is placed above the staff. A box containing the number 6 is placed above the staff, with the instruction "pizz." written above it.

Violin part, measures 40-41. The music is marked "mit Sord." and "natürlich". The dynamic is *pp*. A box containing the number 40 is placed above the staff. A box containing the number 3 is placed above the staff.

# Mahler — Symphony No. 9 in D Major

20

## 1. VIOLINE.

Sord. ab. 5

*pp*

Tempo I. subito.

*ff*

41

pizz.

Grazioso. arco

Mahler — Symphony No. 9 in D Major

1. VIOLINE.

*cresc.* - - - *poco a* - - - *poco*

*cresc.* - - - *poco a* - - - *poco*

42

*arco*

*f* *p* *ff arco*

*pizz.*

3

43

5

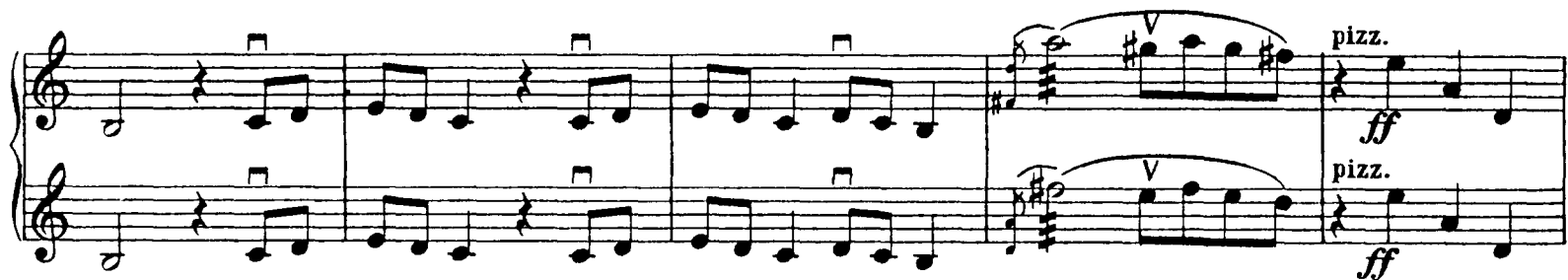
*Più stretto.*

*sf sf ff*

# Mahler — Symphony No. 9 in D Major

22

## 1. VIOLINE.



# IV. ADAGIO.

Sehr langsam und noch zurückhaltend.

G-Saite - *a tempo (molto adagio)*  
*f* lang gezogen *dim.* *p* *molto espress.*  
 großer Ton

stets großer Ton *f*

subito morendo Straffer im Tempo. *p* *f* *espress.*

*ff* *p* subito ma *espress.* *f*

Fließend. *f* *cresc...* *ff* *ff* *molto cresc...*

Etwas drängend. (unmerklich) *sf* *f* *sf*

Plötzlich wieder sehr langsam (wie zu Anfang) und etwas zögernd.

*pp* ohne Empfindung

2. VI. *tr. Solo.* *p* *espress. molto*  
 ohne Ausdruck *pp*

Etwas (aber unmerklich) drängend.

*espress.* *pp* *morendo*  
 stark hervortretend  
*molto espress.* 2

# Mahler — Symphony No. 9 in D Major

24

## 1. VIOLINE.

*Molto adagio subito.* (wie im letzten Takte die)

*pp* *p molto espress.* *f*

*lang gezogen*

*Pesante.* *Rit. a tempo* (*Molto adagio.*) *stets breitester Strich*

*ff*

*ff*

*Etwas (unmerklich) drängend.*

*fff* *sf* *sf* *sf* *sf* *pp subito verklingend Griffbrett*

*Wieder altes Tempo.* *Solo.*

*pp espress.* *hervortretend* *4* *p dolce ma espress.* *1*

*Stets sehr gehalten.*

*ppp dolcissimo* *morendo* *12* *13.* *Vlc.* *pp*

*Fließender, doch durchaus heftig ausbrechend*

*14.* *15.* *16.* *17.* *ppp* *ff*

*nicht eilend.* *Nun etwas drängend.*

*ff* *sempre cresc..*

*3* *3* *3* *3*



Mahler — Symphony No. 9 in D Major

1. VIOLINE.

*Pesante.*  
Vla. 

*Sehr fließend.* 

*Wieder zurückhaltend.* *molto rit.* 

*fff viel Bogen sf sf sf immerfff rit. sf sf sf*

**Tempo I. Molto adagio.**  
*(noch breiter als zu Anfang.)*

*p pp* 

*f cresc..* 

*ff dim..* 

*-pp ppp sempre sempre pp* 

**Adagissimo.** *Langsam und ppp bis zum Schluß.*  
*(stets ohne Sord.) mit inniger Emp-*

*ersterbend* *pp* *pp* *ppp Griffbrett.* 

*findung* *zögernd* *ersterbend ppp* *(stets ohne Sord.)* 

*1 1 1 1* *ppp pppp pppp* 