

Camerloher, Placidus von (1718-1782) BRD DS Mus.ms 213/IX
Lad. Joseph I
Sinfonia/a/2 Violin/Viola/e/Cembalo./[Incipit]/Cammerlocher./
(Es-dur)



Allegro 3/4 Es-dur - An-
dante 2/4 c-moll - Pre-
sto 2/4 Es-dur.

Ms.ca. 1750 (Graupner). 35 x 23 cm.

4 St.:vl 1,2,vla,cembalo. 1,1,1,2 Bl.

Alte Sign,: 3006.

Ziegler Nr.46. *Fonsberg: them. Ind. C 25*

~~III~~
IX

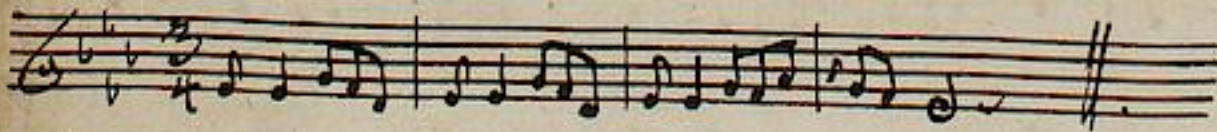
Sinfonia

a.

2 Violin

Viola

^c
Cembalo.



Cammerbrake.

GRONERZUGLICH
RESSISCHE
BIBLIOTHEK

Sinfonia

Lento

Allegro

Andante

Finis

The image shows a page of handwritten musical notation for a symphony. It consists of 15 staves of music. The first section is marked 'Allegro' and the second section is marked 'Andante'. The notation includes various rhythmic values, accidentals, and dynamic markings. The piece concludes with a double bar line and the word 'Finis' written in a decorative script.

12. Sinf.

This block shows the right-hand page of the manuscript, which is partially visible. It contains the continuation of the musical score from the previous page, with several staves of handwritten notation.

12. Sinfonia

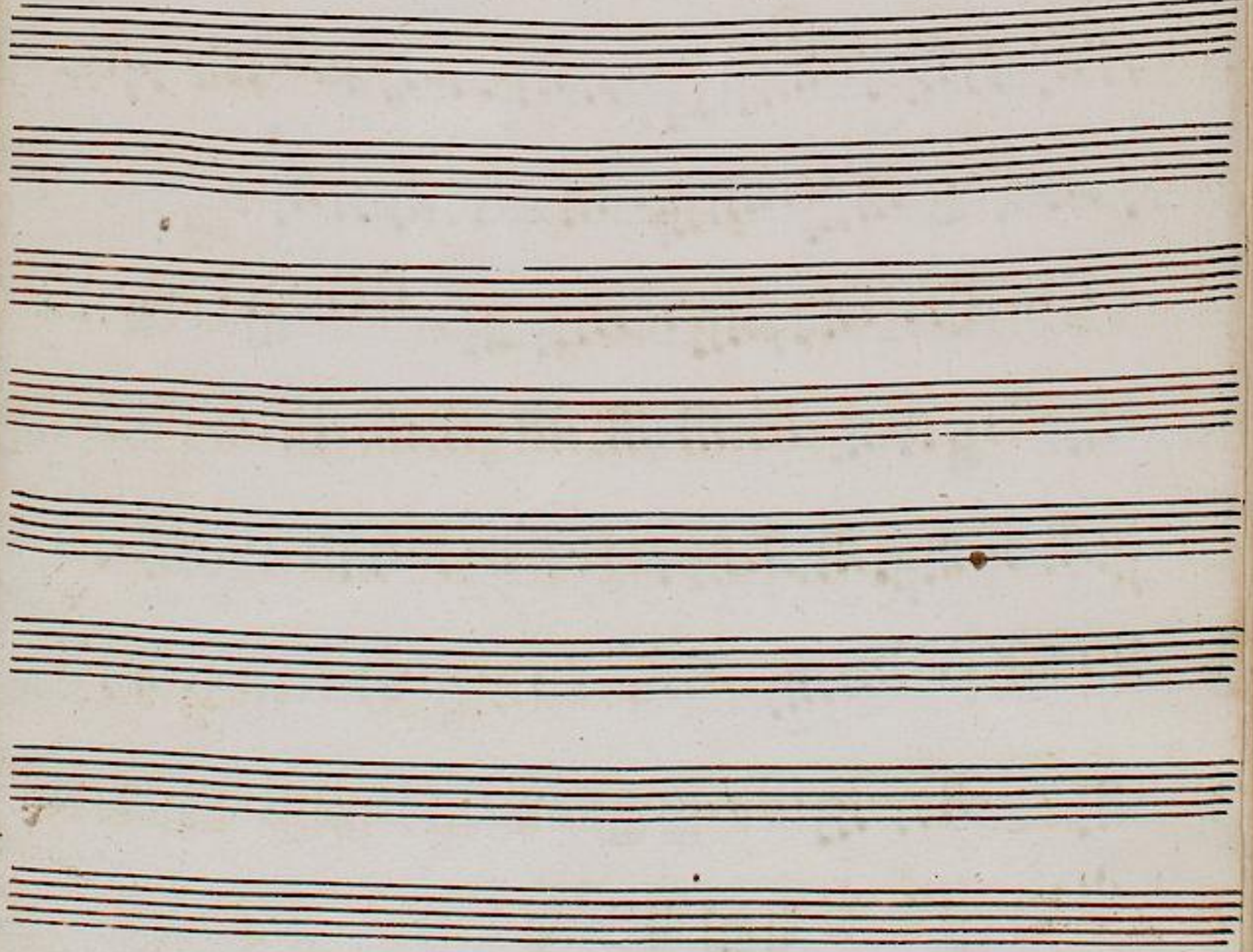
Violino 1.

Allegro

Andante

Fin.

Quarta



12. Symfonia



Allegro

Andante

Cresc.

Presto

12. Sinfonie

Allegro.

Andante

Presto.

Presto.



Presto.

Handwritten musical score on six staves. The notation includes treble clefs, a key signature of one flat, and a 2/4 time signature. The music consists of eighth and sixteenth notes, with some rests and dynamic markings. The sixth staff ends with a double bar line and a dense scribble of diagonal lines.

Ten empty musical staves with red lines, arranged in two groups of five.