

Kyrie *Missa in contrapuncto*

H.I.F. Biber

Viola 1

4

9

15

22

29

36

43

52

59

66

73

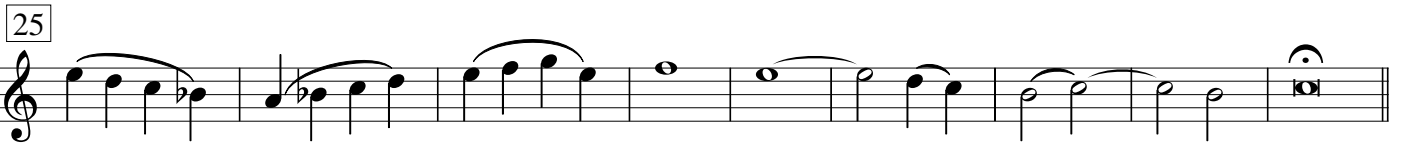
80

87

95

Kyrie ut supra

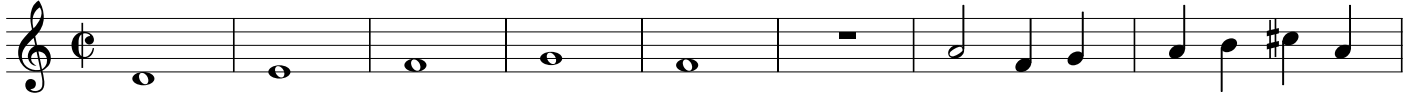
Gloria



Credo

Musical score for 'Credo' consisting of 12 staves of music. The score is written in treble clef with a key signature of one sharp (F#) and a common time signature (C). The music features various rhythmic values including eighth, quarter, and half notes, as well as rests. Several measures contain triplets, indicated by a '3' above the notes. Measure numbers are provided in small boxes at the beginning of each staff: 11, 23, 32, 42, 53, 63, 80, 89, 100, 110, 122, 138, 161, and 173. The notation includes slurs, ties, and dynamic markings such as accents.

Sanctus



9



17



26



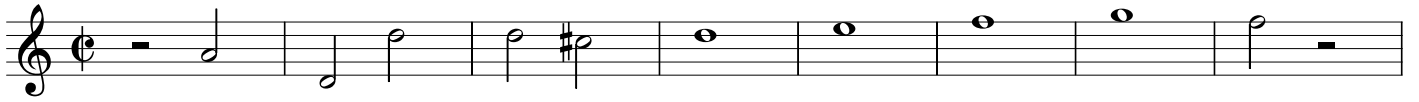
35



43



52



60



70



76



84



Agnus Dei



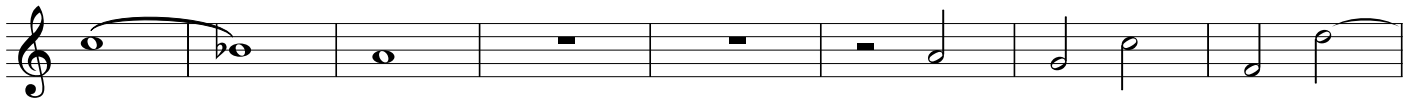
9



17



25



33



40



47



54



61

Adagio