

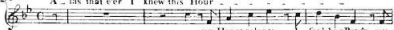
Duetto

Sequel to Turn fair Clora

S. Webbe 7



A - las that e'er I knew this Hour



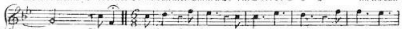
my Heart relents I feel her Pow'r my



can then Damon be fe - vere. . . . . alas can then Damon be fe - vere



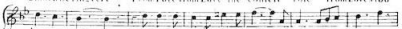
Heart relents I feel her Pow'r can then Clora be in - cere. . . . . no no can



Yes From Love from Love the contest rose from Love's too



Clora be in - cere From Love from Love the contest rose from Love's too



jealous Eye attraction's fondness to close in sweet - est



jealous Eye tranſact Diſcord soon to close in ſweet . . . . et Volti

Har. mo. ny a tranfient Difcord soon to clofe in sweeteft Harmony in

Har. mo. ny a tranfient Difcord soon to clofe in sweeteft Harmony in

sweeteft Harmony the conteft rofe from Love's too jealous Eye . . . from

sweeteft Harmony from Love the conteft rofe from Love's too jealous Eye from Love

Love the conteft rofe a tranfient Difcord soon to clofe in sweeteft

the conteft rofe the conteft rofe a tranfient Difcord soon to clofe in sweeteft

Harmony in sweeteft Harmony in sweet . . . est Har. . . mo. ny.

Harmony in sweeteft Harmony in sweet . . . est Har. . . mo. ny.