

Partitur. I:1.

# Sinfonia B 4

<sup>a</sup>  
Oboe - Primo  
Oboe Secondo.  
Violino Primo  
Violino Secondo  
Alto Viola  
&  
Basso.



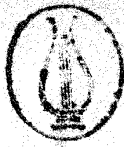
del Signor Agrell

Op. 1:4

[Denna Sinfonie är N:o 14. Hand Agrells  
tryckta Sinfonier op. 1.]

# Sinfonia

Sv. Saml.  
Orkester.



Viol. I

Secundo

Oboe I

Secundo

Alto V.

Basso.

*Allegro.*

*piano*

*piano*

*piano*

*piano*

This image shows a page of handwritten musical notation on ten staves. The notation is written in black ink on aged, slightly yellowed paper. The score is organized into three systems of three staves each. The first system (top three staves) features a treble clef on the top staff and a bass clef on the bottom staff. The second system (middle three staves) begins with a treble clef on the top staff, a bass clef on the middle staff, and a bass clef on the bottom staff. The word "forte" is written in a cursive hand on the top staff of this system. The third system (bottom three staves) also uses a treble clef on the top staff and a bass clef on the bottom staff. The notation includes various note values, rests, and dynamic markings. The paper shows signs of age, including some foxing and a faint circular stamp at the top center.

The first system of the handwritten musical score consists of six staves. The top staff is a treble clef with a key signature of one flat (B-flat). The second and third staves are also in treble clef with a one-flat key signature. The fourth and fifth staves are in bass clef with a one-flat key signature. The bottom staff is in bass clef with a one-flat key signature. The music is written in a common time signature (C). The notation includes various note values, rests, and dynamic markings such as *mf* and *ff*. The first measure of the top staff begins with a *mf* marking. The piece concludes with a double bar line and a repeat sign.

The second system of the handwritten musical score consists of six staves. The top staff is in treble clef with a one-flat key signature. The second and third staves are in bass clef with a one-flat key signature. The fourth and fifth staves are in bass clef with a one-flat key signature. The bottom staff is in bass clef with a one-flat key signature. The music is written in a common time signature (C). The notation includes various note values, rests, and dynamic markings such as *mf* and *ff*. The first measure of the top staff begins with a *mf* marking. The piece concludes with a double bar line and a repeat sign.

A handwritten musical score consisting of ten staves, arranged in two systems of five staves each. The notation is in black ink on aged paper. The first system (staves 1-5) features complex rhythmic patterns with many sixteenth and thirty-second notes, and some triplets. The second system (staves 6-10) continues the piece, with a dynamic marking of *piano* written in cursive on the sixth staff. The notation includes various note values, rests, and articulation marks. The overall style is that of a composer's manuscript.

This image shows a page of handwritten musical notation on aged, slightly stained paper. The score is organized into two systems, each containing five staves. The notation is written in black ink and includes various musical symbols such as clefs, notes, rests, and dynamic markings. The first system begins with a treble clef and a key signature of one sharp (F#). The first staff of the first system contains the dynamic markings *for*, *piano*, and *forte* across its measures. The second system begins with a bass clef and a key signature of one flat (Bb). The first staff of the second system contains the dynamic markings *piano* and *forte*. The paper shows signs of age, including some foxing and a slightly irregular right edge.

Handwritten musical score system 1, consisting of six staves. The first staff is a grand staff with treble and bass clefs, containing a piano introduction and a *piano* section. The second staff is a grand staff with treble and bass clefs, containing a *piano* section. The third staff is a grand staff with treble and bass clefs, containing a *piano* section. The fourth staff is a grand staff with treble and bass clefs, containing a *piano* section. The fifth staff is a grand staff with treble and bass clefs, containing a *piano* section. The sixth staff is a grand staff with treble and bass clefs, containing a *piano* section. The system concludes with a *forte* section in the first staff.

Handwritten musical score system 2, consisting of six staves. The first staff is a grand staff with treble and bass clefs, containing a *piano* section and a *forte* section. The second staff is a grand staff with treble and bass clefs, containing a *piano* section. The third staff is a grand staff with treble and bass clefs, containing a *piano* section. The fourth staff is a grand staff with treble and bass clefs, containing a *piano* section. The fifth staff is a grand staff with treble and bass clefs, containing a *piano* section. The sixth staff is a grand staff with treble and bass clefs, containing a *piano* section. The system concludes with a *forte* section in the first staff.

The first system of the handwritten musical score consists of six staves. The notation is dense, featuring a variety of note values including eighth and sixteenth notes, as well as rests. The staves are connected by a brace on the left side. The music is written in a single system across three measures, with vertical bar lines separating the measures.

The second system of the handwritten musical score also consists of six staves. This system is characterized by a significant increase in density, particularly in the middle staves, where there are large blocks of sixteenth-note passages. The notation includes many beamed notes and rests. The system is divided into three measures by vertical bar lines, and the staves are connected by a brace on the left.



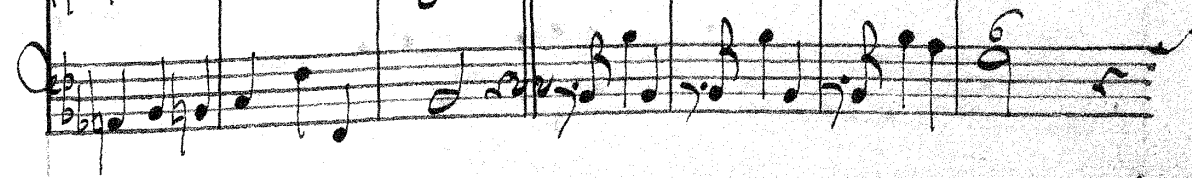
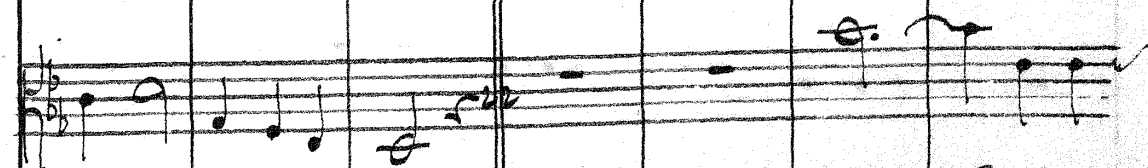
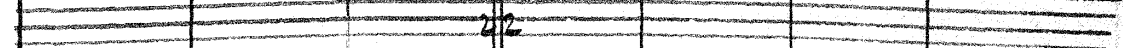
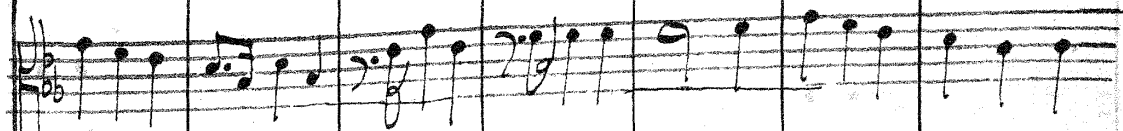
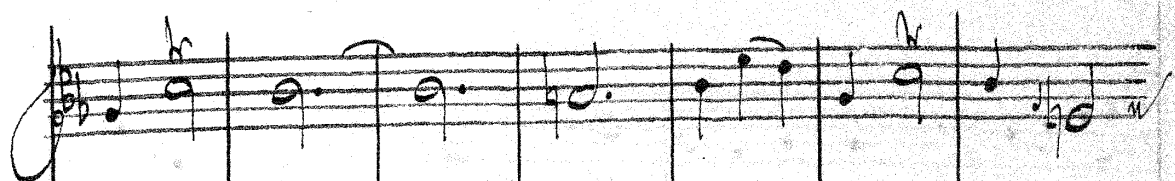
Handwritten musical notation on a single staff, featuring a treble clef, a key signature of two flats (B-flat and E-flat), and a 3/4 time signature. The word "Piano" is written below the staff. The notation includes a series of notes and rests, with some notes marked with a '2' above them, possibly indicating a second ending or a specific articulation.

Two empty musical staves, each consisting of five horizontal lines, positioned below the first system of notation.

Handwritten musical notation on two staves. The top staff has a treble clef, two flats, and a 3/4 time signature. The bottom staff has a bass clef, two flats, and a 3/4 time signature. The notation consists of a series of notes and rests, with some notes marked with a '2' above them.

Handwritten musical notation on two staves. The top staff has a treble clef, two flats, and a 3/4 time signature. The bottom staff has a bass clef, two flats, and a 3/4 time signature. The notation includes notes, rests, and some dynamic markings such as  $mf$  and  $ff$ .

Handwritten musical notation on two staves. The top staff has a treble clef, two flats, and a 3/4 time signature. The bottom staff has a bass clef, two flats, and a 3/4 time signature. The notation includes notes, rests, and some dynamic markings such as  $mf$  and  $ff$ .



Handwritten musical notation for the first system. It consists of a single staff with a treble clef and a key signature of two flats (B-flat and E-flat). The music begins with a treble clef and a key signature of two flats. The first measure contains a quarter note G4, followed by quarter notes A4, B-flat4, and C5. The second measure contains a quarter note D5, followed by quarter notes E5, F5, and G5. The third measure contains a quarter note A5, followed by quarter notes B5, C6, and D6. The fourth measure contains a quarter note E6, followed by quarter notes F6, G6, and A6. The fifth measure contains a quarter note B6, followed by quarter notes C7, D7, and E7. The sixth measure contains a quarter note F7, followed by quarter notes G7, A7, and B7. The seventh measure contains a quarter note C8, followed by quarter notes D8, E8, and F8. The eighth measure contains a quarter note G8, followed by quarter notes A8, B8, and C9. The dynamic marking *piano* is written below the staff in the fourth measure.

Handwritten musical notation for the second system. It consists of two staves. The upper staff has a treble clef and a key signature of two flats. The lower staff has a bass clef and a key signature of two flats. The music begins with a treble clef and a key signature of two flats. The first measure contains a quarter note G4, followed by quarter notes A4, B-flat4, and C5. The second measure contains a quarter note D5, followed by quarter notes E5, F5, and G5. The third measure contains a quarter note A5, followed by quarter notes B5, C6, and D6. The fourth measure contains a quarter note E6, followed by quarter notes F6, G6, and A6. The fifth measure contains a quarter note B6, followed by quarter notes C7, D7, and E7. The sixth measure contains a quarter note F7, followed by quarter notes G7, A7, and B7. The seventh measure contains a quarter note C8, followed by quarter notes D8, E8, and F8. The eighth measure contains a quarter note G8, followed by quarter notes A8, B8, and C9. The dynamic marking *poco forte* is written below the staff in the fourth measure.

Handwritten musical notation for the third system. It consists of two staves. The upper staff has a treble clef and a key signature of two flats. The lower staff has a bass clef and a key signature of two flats. The music begins with a treble clef and a key signature of two flats. The first measure contains a quarter note G4, followed by quarter notes A4, B-flat4, and C5. The second measure contains a quarter note D5, followed by quarter notes E5, F5, and G5. The third measure contains a quarter note A5, followed by quarter notes B5, C6, and D6. The fourth measure contains a quarter note E6, followed by quarter notes F6, G6, and A6. The fifth measure contains a quarter note B6, followed by quarter notes C7, D7, and E7. The sixth measure contains a quarter note F7, followed by quarter notes G7, A7, and B7. The seventh measure contains a quarter note C8, followed by quarter notes D8, E8, and F8. The eighth measure contains a quarter note G8, followed by quarter notes A8, B8, and C9. The dynamic marking *poco forte* is written below the staff in the fourth measure.

*piano* *poco for.*

Handwritten musical notation on two staves, featuring treble and bass clefs and a key signature of two flats.

Handwritten musical notation on a single staff, featuring a treble clef, a key signature of two flats (B-flat and E-flat), and a 3/4 time signature. The notation includes a series of notes with stems, some beamed together, and a fermata over the final note. The word *forte* is written in cursive below the staff.

Handwritten musical notation on a single staff, featuring a treble clef, a key signature of two flats, and a 3/4 time signature. The notation includes a series of notes with stems, some beamed together, and a fermata over the final note.

Handwritten musical notation on a single staff, featuring a treble clef, a key signature of two flats, and a 3/4 time signature. The notation includes a series of notes with stems, some beamed together, and a fermata over the final note. The word *piano* is written in cursive below the staff.

Handwritten musical notation on a single staff, featuring a treble clef, a key signature of two flats, and a 3/4 time signature. The notation includes a series of notes with stems, some beamed together, and a fermata over the final note.

Handwritten musical score for six staves, measures 22-24. The notation includes various note values, rests, and dynamic markings. The staves are connected by a brace on the left. The music is written in a common time signature.

Handwritten musical score for six staves, measures 25-29. The notation includes various note values, rests, and dynamic markings. The staves are connected by a brace on the left. The music is written in a common time signature.

*Col. Viol. 1<sup>o</sup>*

*Presto.*

Handwritten musical notation on a single staff, featuring a treble clef, a key signature of one flat (B-flat), and a 3/4 time signature. The notation includes a series of eighth notes, some beamed together, and a few quarter notes. A diagonal slash is drawn through the notes in the middle of the staff.

Two empty musical staves, each consisting of five horizontal lines, with vertical bar lines extending from the first staff down to the second.

Handwritten musical notation on a single staff, featuring a treble clef, a key signature of one flat, and a 3/4 time signature. The notation consists of a sequence of quarter notes, some with stems pointing down.

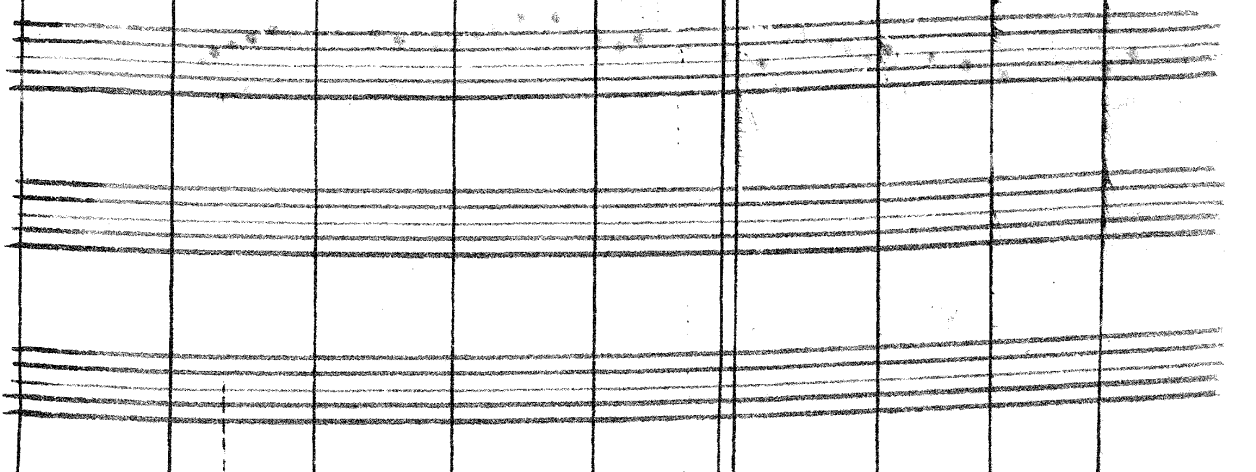
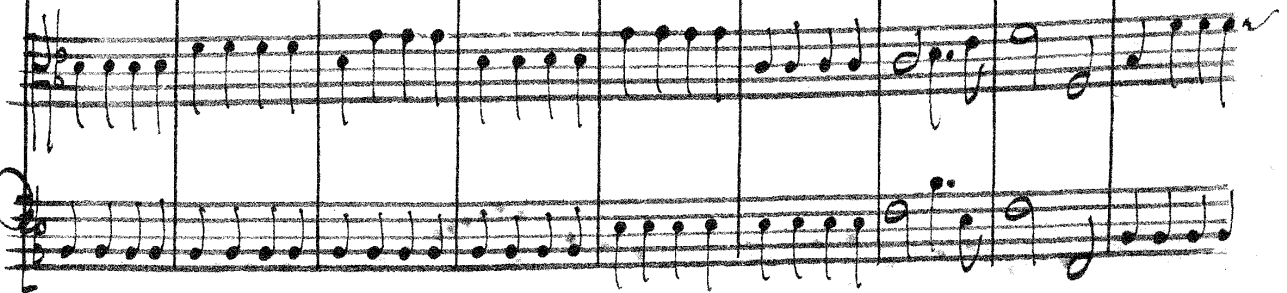
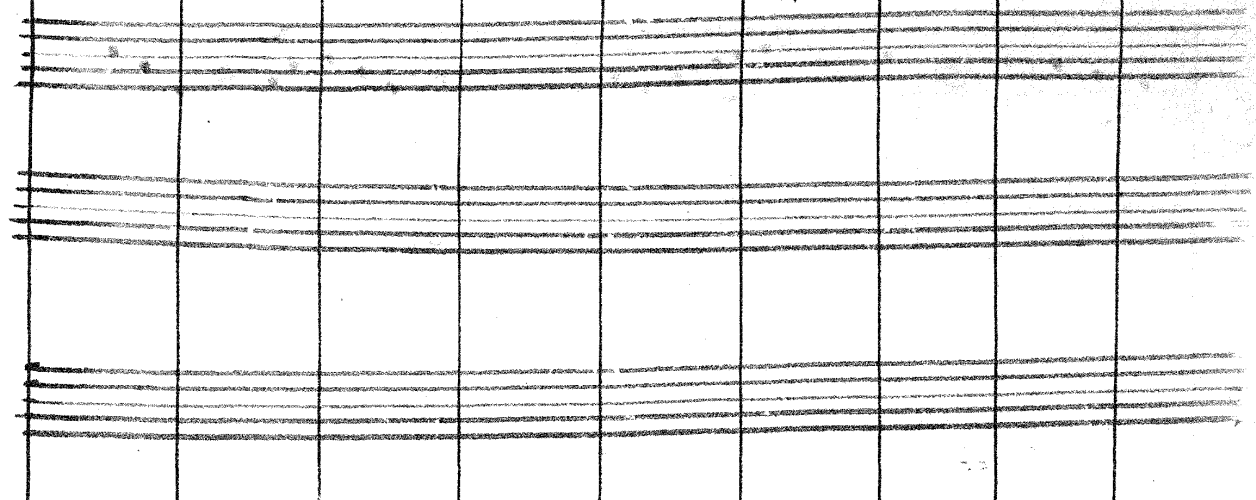
Handwritten musical notation on a single staff, featuring a treble clef, a key signature of one flat, and a 3/4 time signature. The notation consists of a sequence of quarter notes, some with stems pointing down.

Handwritten musical notation on a single staff, featuring a treble clef, a key signature of one flat, and a 3/4 time signature. The notation includes a triplet of eighth notes marked with a '3' above them, followed by a series of eighth notes. A diagonal slash is drawn through the notes in the middle of the staff.

Two empty musical staves, each consisting of five horizontal lines, with vertical bar lines extending from the first staff down to the second.

Handwritten musical notation on a single staff, featuring a treble clef, a key signature of one flat, and a 3/4 time signature. The notation consists of a sequence of quarter notes, some with stems pointing down.

Handwritten musical notation on a single staff, featuring a treble clef, a key signature of one flat, and a 3/4 time signature. The notation consists of a sequence of quarter notes, some with stems pointing down.





Handwritten musical notation on a single staff, featuring a treble clef, a key signature of one flat, and a 2/2 time signature. The notation includes a series of eighth and sixteenth notes, with some slurs and dynamic markings.

Two empty musical staves with a 2/2 time signature written at the beginning of the second staff.

Two empty musical staves with a 2/2 time signature written at the beginning of the second staff.

Handwritten musical notation on two staves. The upper staff uses a treble clef and the lower staff uses a bass clef. The notation includes a series of eighth and sixteenth notes, with some slurs and dynamic markings.

Handwritten musical notation on a single staff, featuring a treble clef, a key signature of one flat, and a 2/2 time signature. The notation includes a series of eighth and sixteenth notes, with some slurs and dynamic markings.

Two empty musical staves with a 2/2 time signature written at the beginning of the second staff.

Two empty musical staves with a 2/2 time signature written at the beginning of the second staff.

Handwritten musical notation on two staves. The upper staff uses a treble clef and the lower staff uses a bass clef. The notation includes a series of eighth and sixteenth notes, with some slurs and dynamic markings.

*Si replica il Presto*